

2006-07 WCPSS Dropout Rate

On February 7th, 2008, the North Carolina Department of Public Instruction released its annual statewide Dropout Report covering the 2006-07 school year. The charts below show the dropout rate for WCPSS compared to the state as a whole, to other large school districts in North Carolina, and by race. These analyses reveal the following:

- The WCPSS dropout rate for grades 9-12 was 4.2% in 2006-07, up from a rate of 3.9% in 2005-06. The state's rate also showed an increase-- from 5.0% to 5.2%.
- Compared to other large school districts in North Carolina, Durham (4.9), Forsyth (6.4), and Mecklenburg (6.4) had higher dropout rates in 2006-07 than did WCPSS, while Guilford (3.0) remained below. Of those districts, only WCPSS and Guilford have had a rate below the state average in each of the past nine years.
- WCPSS dropout rates for Hispanic and Asian students declined in 2006-07, while the rates for Black and for Multi-racial students increased. The rate for White students stayed the same. Note that the Asian and Multi-racial student groups constitute less than six percent of the total dropout group; therefore, their rates may fluctuate more from year to year than rates for the other racial subgroups. No data are reported for Native American students due to very low numbers (five or fewer) in that group.

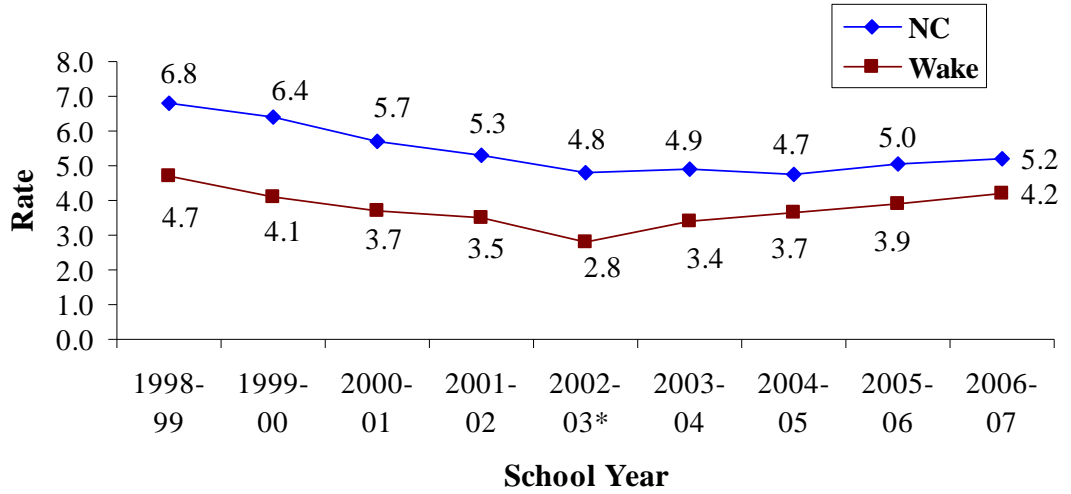
Author
Kevin Gilleland



WAKE COUNTY
PUBLIC SCHOOL SYSTEM

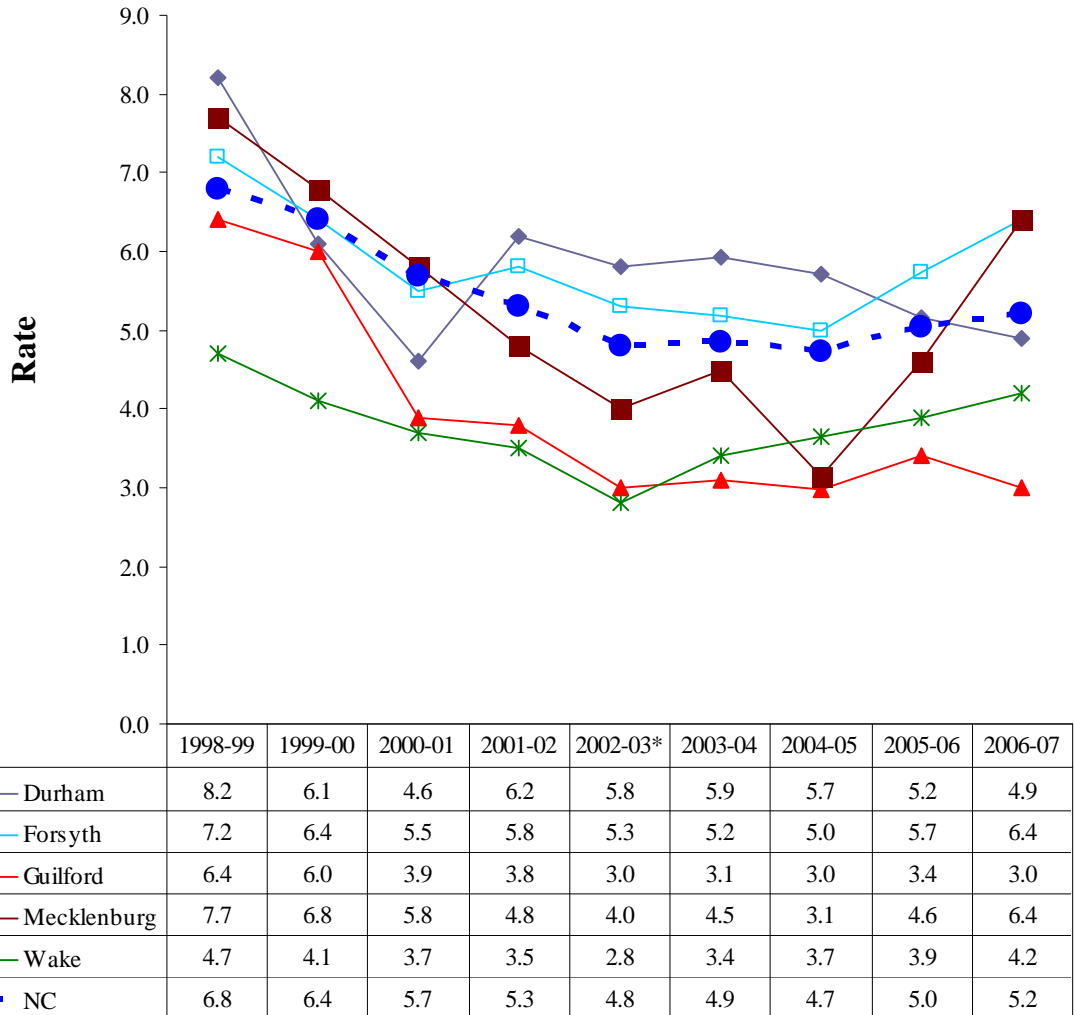
www.wcpss.net/evaluation-research

**NC and WCPSS Dropout Rates
Grades 9-12
1999-2007**



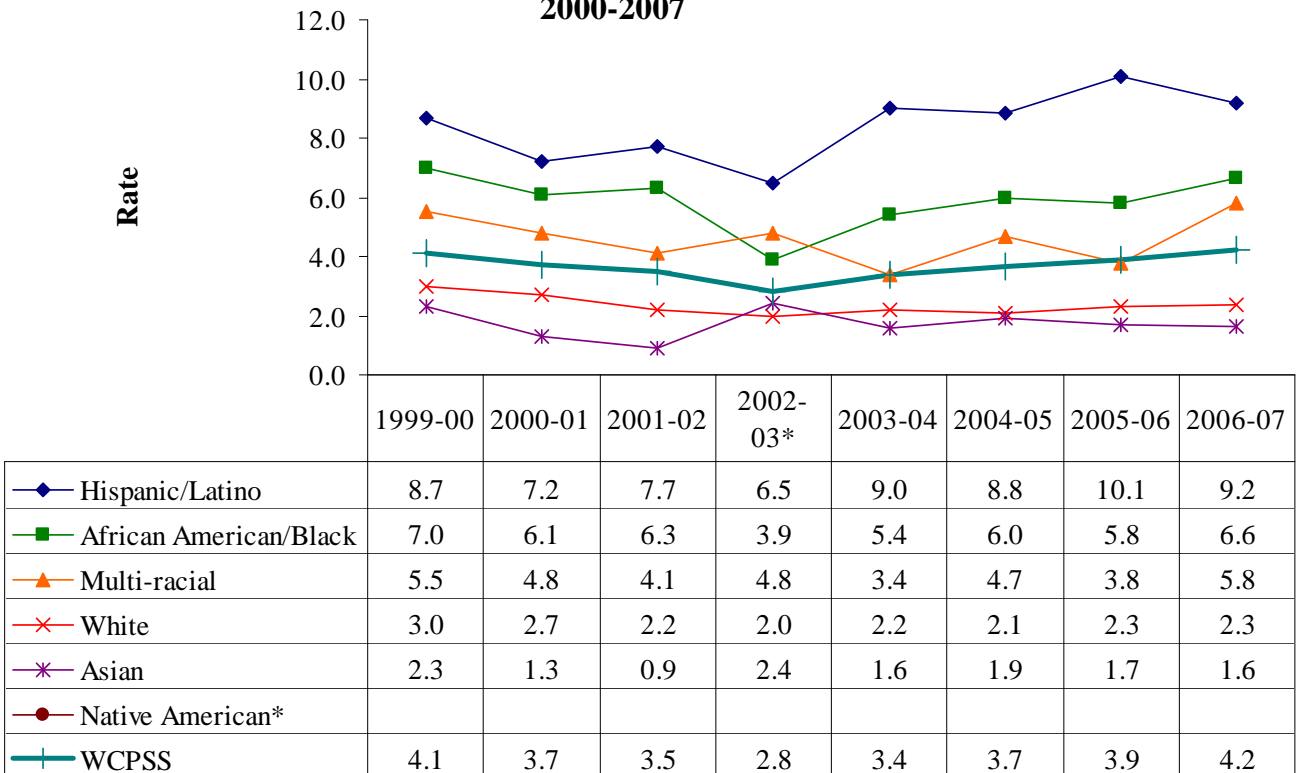
*The 2002-03 dropout rate is higher than the rate DPI reports because additional dropouts were discovered after the official data submission to DPI.

Grades 9-12 Dropout Rates for Selected Districts



*The 2002-03 dropout rate is higher than the rate DPI reports because additional dropouts were discovered after the official data submission to DPI.

**Dropout Rates by Ethnic Group
Grades 9-12
2000-2007**



*The Native American values are blank because of insufficient data.

*The 2002-03 dropout rate is higher than the rate DPI reports because additional dropouts were discovered after the official data submission to DPI.