

2004-05 WAKE COUNTY PUBLIC SCHOOLS' DROPOUT RATE

On March 1, 2006, the North Carolina Department of Public Instruction (DPI) released their annual dropout report for the state covering the 2004-05 school year. The attached charts show the dropout rate for WCPSS compared to previous years, to other large school districts in North Carolina, and to the state as a whole. These analyses reveal the following:

- The WCPSS dropout rate for grades 9-12 was 3.7% in 2004-05, up slightly from a rate of 3.4% in 2003-04.
- The WCPSS rate in 2004-05 remains below the statewide rate (4.7%).
- Compared to other large school districts in North Carolina, Durham (5.7%) and Forsyth (5.0%) had higher dropout rates in 2004-05 than WCPSS, while Charlotte/Mecklenburg (3.1%) and Guilford (3.0%) had lower rates. Of those districts, only WCPSS has had a rate below 5% in each of the past seven years.
- WCPSS dropout rates for Hispanic/Latino and White students dropped slightly in 2004-05, while the rates for Asian, Black/African-American, and Multiracial students increased slightly. Note that the Asian and Multiracial student groups each have very few (i.e., fewer than 40) students; therefore, their rates will fluctuate more from year to year than rates for the other ethnic subgroups. No data are reported for Native American students due to very low numbers of dropouts in that group.

A full report will be available soon.

Author

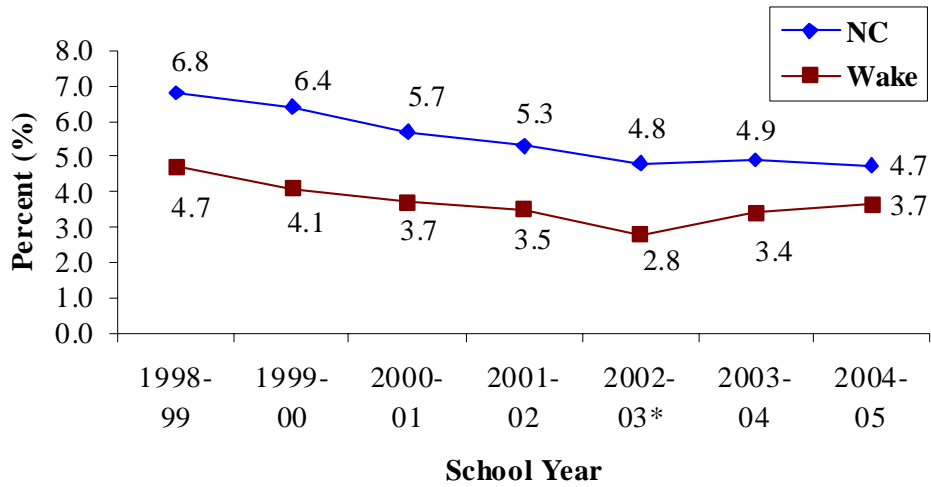
Kevin Gilleland
Brad McMillen



WAKE COUNTY
PUBLIC SCHOOL SYSTEM

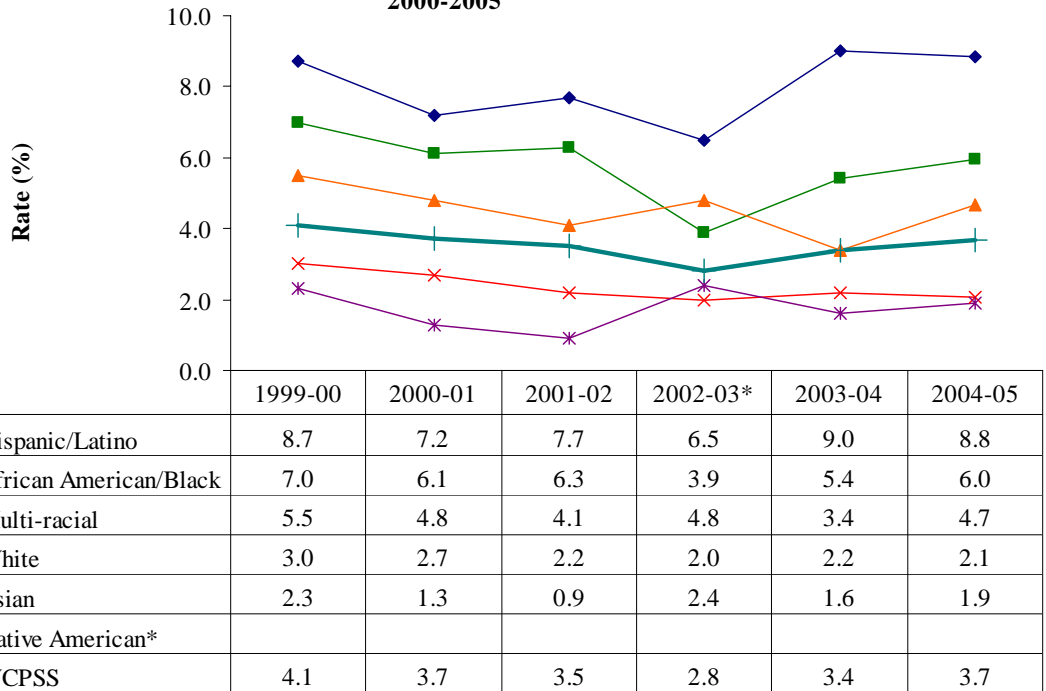
www.wcpss.net/evaluation-research

NC and WCPSS Seven-Year Dropout Rates Grades 9-12 1999-2005



*The Wake 2002-03 dropout rate is higher than the rate DPI reports because additional dropouts were discovered after the official data submission to DPI.

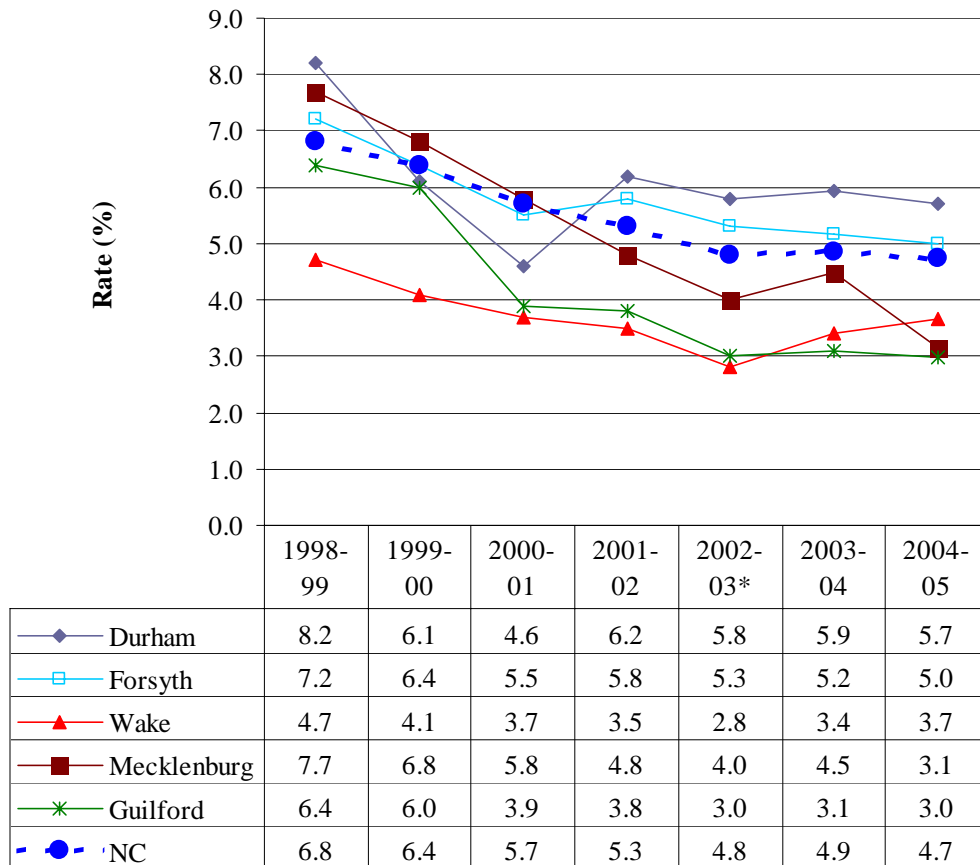
**Dropout Rates by Ethnic Group
Grades 9-12
2000-2005**



*The Native American values are blank because of insufficient data.

*The Wake 2002-03 dropout rate is higher than the rate DPI reports because additional dropouts were discovered after the official data submission to DPI.

Grades 9-12 Dropout Rates for Selected Districts and NC



*The Wake 2002-03 dropout rate is higher than the rate DPI reports because additional dropouts were discovered after the official data submission to DPI.