



E&R Report No.05.15

December 2005

END-OF-GRADE MULTIPLE-CHOICE TEST RESULTS, 2004-05

Authors: Brad McMillen and Glenda Haynie

ABSTRACT

The percentage of reading and mathematics tests taken by Wake County Public School System (WCPSS) students in grades 3-8 that resulted in Level III or IV scores fell slightly in 2004-05 to 90.8% from 91.1% in 2003-04. The percentage of students scoring in Level III or IV was slightly higher in mathematics (91.4%) than in reading (90.4%). The percentage of students scoring in Level III or IV in reading showed slight increases at all grade levels except grade 4, while percentages in mathematics rose slightly in grades 6 and 7 and fell in grades 3, 4, and 5. Female students out performed male students in both subjects. Disaggregation by race/ethnicity, income level, and disability status showed either no change or a small increase in the percentage of reading scores at Level III or IV and no change or a small decline in mathematics for most groups.

BACKGROUND

All End-of-Grade (EOG) tests are designed to measure student mastery of the knowledge and skills of the North Carolina Standard Course of Study for students in grades 3 through 8 in both reading and mathematics. The tests are administered during the final three weeks of the school year, and are a vital part of the North Carolina accountability program referred to as “ABCs”—Accountability, Basics, and Control. EOG test results are used to determine whether schools meet annual ABCs Growth and Performance targets and whether or not schools made “Adequate Yearly Progress”, a standard required by the federal Elementary and Secondary Education Act of 1965, as amended by the No Child Left Behind Act of 2001. State and local student accountability standards require students who fail to score at or above Level III to be retested with an alternate form of the test. If they fail to achieve a Level III score on the retest, they may be considered for retention.

Key Topics

Overall District Results----- p. 2-6
Results by Grade Level----- p. 7-10
Disaggregated Results ----- p. 11-18
Discussion----- p. 20
School-by-School Results----- Appendices A-D

DISTRICTWIDE RESULTS

Although down slightly from the previous year, the percentage of all EOG exam scores at or above grade level (Level III or IV) in 2004-05 surpassed 90% for the third year in a row¹. The composite percentage, which includes reading and mathematics scores for all grade 3-8 students who took an EOG exam, has been near 91% for three consecutive years.

In reading, the percentage of all grade 3-8 students scoring at or above Level III rose slightly from 90.0% in 2003-04 to 90.4% in 2004-05. Average EOG scale scores in reading remained largely unchanged from 2003-04. In mathematics, the percentage of all grade 3-8 students scoring at or above Level III dropped slightly from 92.1% to 91.4%. Average mathematics scale scores dropped slightly in grades 3-5 and increased slightly in grades 6-8. Nearly 87% of students scored at or above Level III in both reading *and* mathematics at all grade levels.

Results were mixed for the majority of student subgroups whose performance is tracked. For the second consecutive year, no large increases or decreases in reading and mathematics proficiency were shown by any major student subgroups at any grade level. Very slight increases are evident in reading for some subgroups, with similarly slight decreases in mathematics for some subgroups as well.

¹ All data in this report are consistent with the state data reported at <http://www.ncpublicschools.org/accountability/reporting/leaperformancearchive/> where possible. Whenever a data point was not available from that site, the data were calculated internally by WCPSS. The only exception to this is the percentage of WCPSS students scoring at or above Level III in mathematics in 2005, for which the state reports 91.7% and our internal number was 91.4%. This discrepancy is due to the state not including mathematics scores for certain limited English proficient students in their calculations.

ACHIEVEMENT LEVEL SCORES

The achievement level score categorizes performance on EOG tests according to four broad levels, defined by the North Carolina Department of Public Instruction (NCDPI; see Table 1).

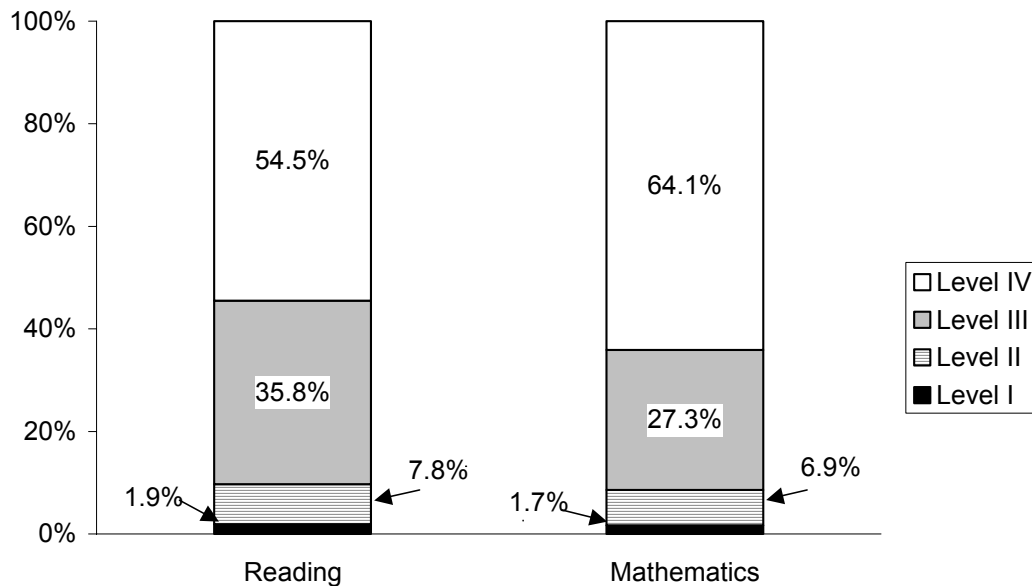
Table 1
Achievement Levels for the North Carolina Testing Program

Level I: Students performing at this level do not have sufficient mastery of knowledge and skills in this subject area to be successful at the next grade level.	Level III: Students performing at this level consistently demonstrate mastery of grade level subject matter and skills and are well prepared for the next grade level.
Level II: Students performing at this level demonstrate inconsistent mastery of knowledge and skills in this subject area, and are minimally prepared to be successful at the next grade level.	Level IV: Students performing at this level consistently perform in a superior manner clearly beyond that required to be proficient at grade-level work.

2004-05 EOG Scores by Achievement Level

An analysis of all grade 3-8 EOG scores by achievement level shows that on each test, a majority of students attained a Level IV score (54.5% in reading and 64.1% in mathematics) in 2004-05. When these percentages are combined with those for Level III, the results show that 90.4% of students met or exceeded grade-level standards in reading, and 91.4% in mathematics (Figure 1).

Figure 1
Percentage of WCPSS Grade 3-8 Reading and Mathematics EOG Scores by Achievement Level, 2004-05

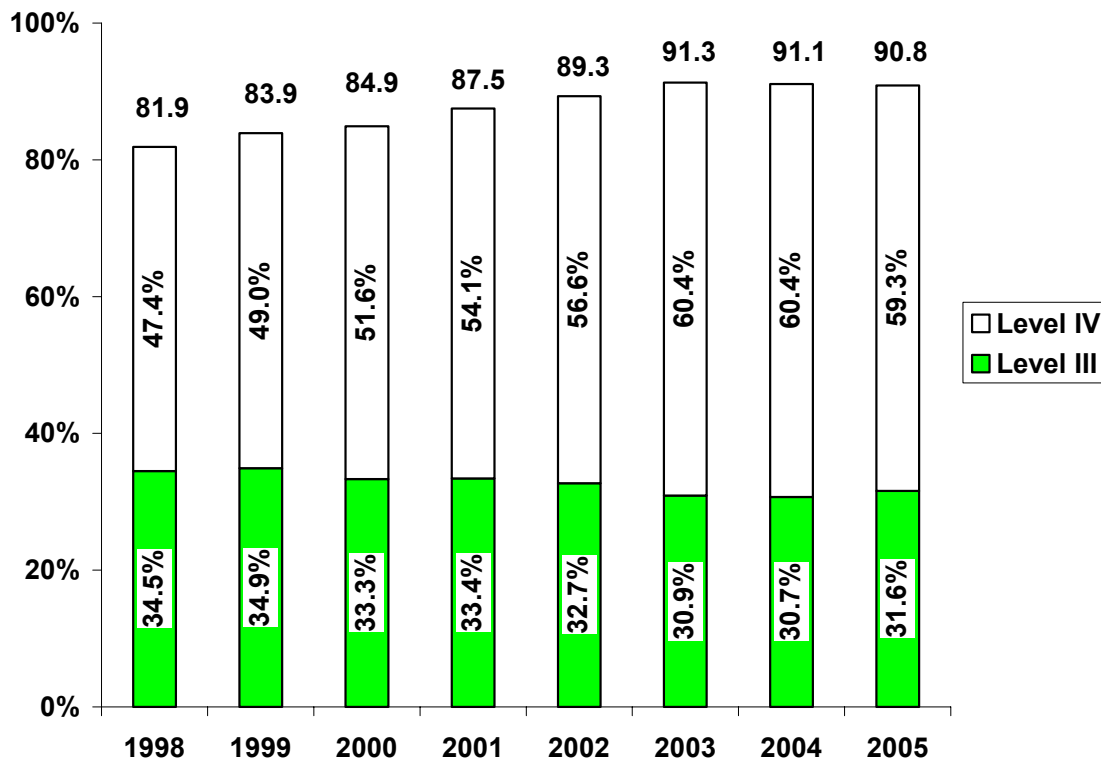


Note: The combined percentage at Levels III and IV in reading was 90.4% after rounding.

Composite Percentages Over Time

Figure 2 shows the composite percentages of all grade 3-8 EOG scores meeting or exceeding grade-level standards in reading or mathematics over the past eight years. Scores are compiled separately for each test and then added together to derive these statistics. The composite percentage of Level III and IV scores has remained at about 91% for the past three years, with the overall proportion of Level IV scores hovering between 59-60%. Since 1998, the composite percentage of reading or mathematics scores at or above Level III has risen by about nine percentage points, and the percentage of Level IV scores has risen approximately 12 percentage points.

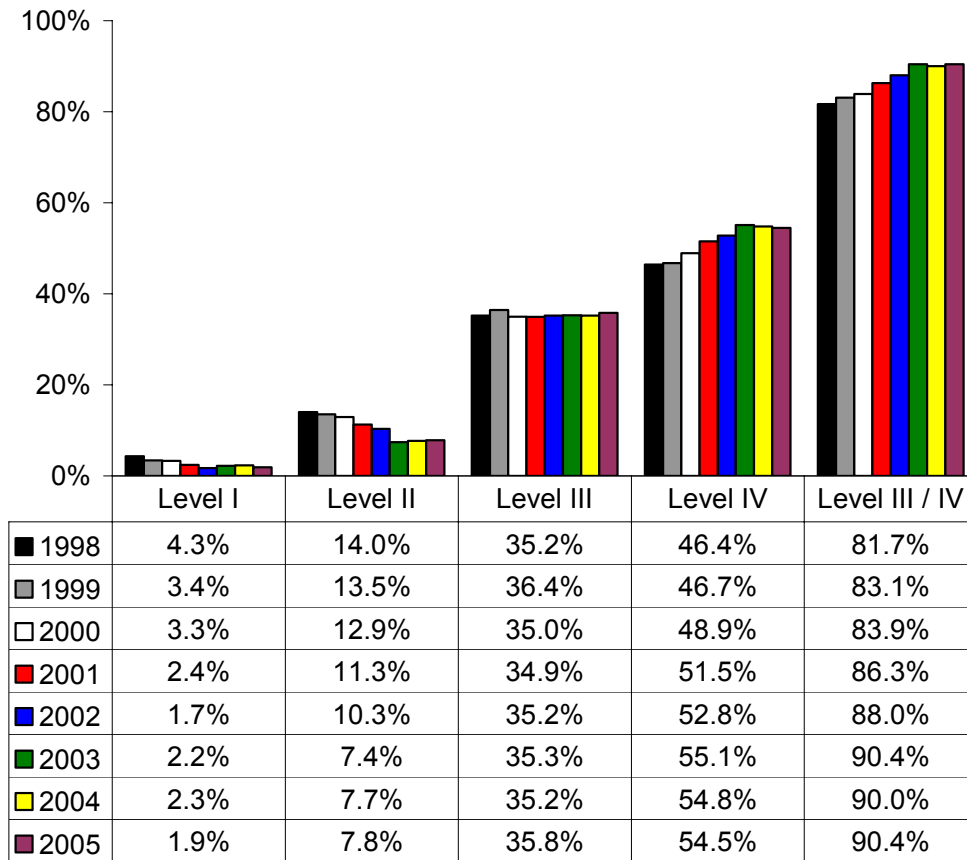
Figure 2
Composite Percentage of WCPSS EOG Scores at/above Level III
Reading or Mathematics, 1997-98 to 2004-05



Student Achievement in Reading Over Time

Examination of Figure 3, which shows the distribution of reading scores by achievement level for the past eight years, reveals that the percentage of students scoring at each of the four achievement levels in reading has remained relatively constant for the past three years. Since 1998, the percentage of exam scores at Levels I and II has been reduced by half, the percentage at Level III has stayed very stable, and the percentage at Level IV has increased about eight percentage points.

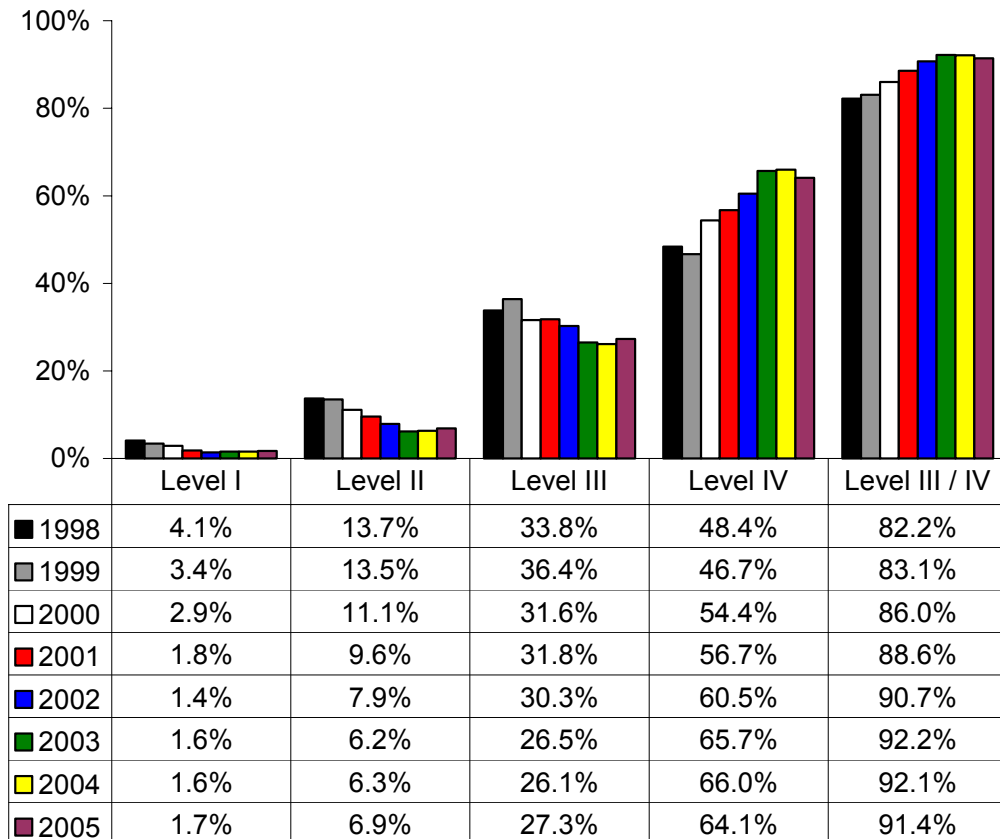
Figure 3
Percentage of WCPSS Grade 3-8 Reading EOG Scores
by Achievement Level, 1997-98 to 2004-05



Student Achievement in Mathematics Over Time

As shown in Figure 4, the distribution of mathematics scores by achievement level in 2004-05 was nearly identical to the previous year. The percentage of scores at Level III rose 1.2 percentage points and the percentage at Level IV declined 1.9 percentage points. Similar to the reading results, the overall percentage of Level I and II mathematics EOG scores has declined by almost 10 percentage points since 1997-98. During that same time span, the percentage at Level IV has risen 16 percentage points.

Figure 4
Percentage of WCPSS Grade 3-8 Mathematics EOG Scores
by Achievement Level, 1997-98 to 2004-05

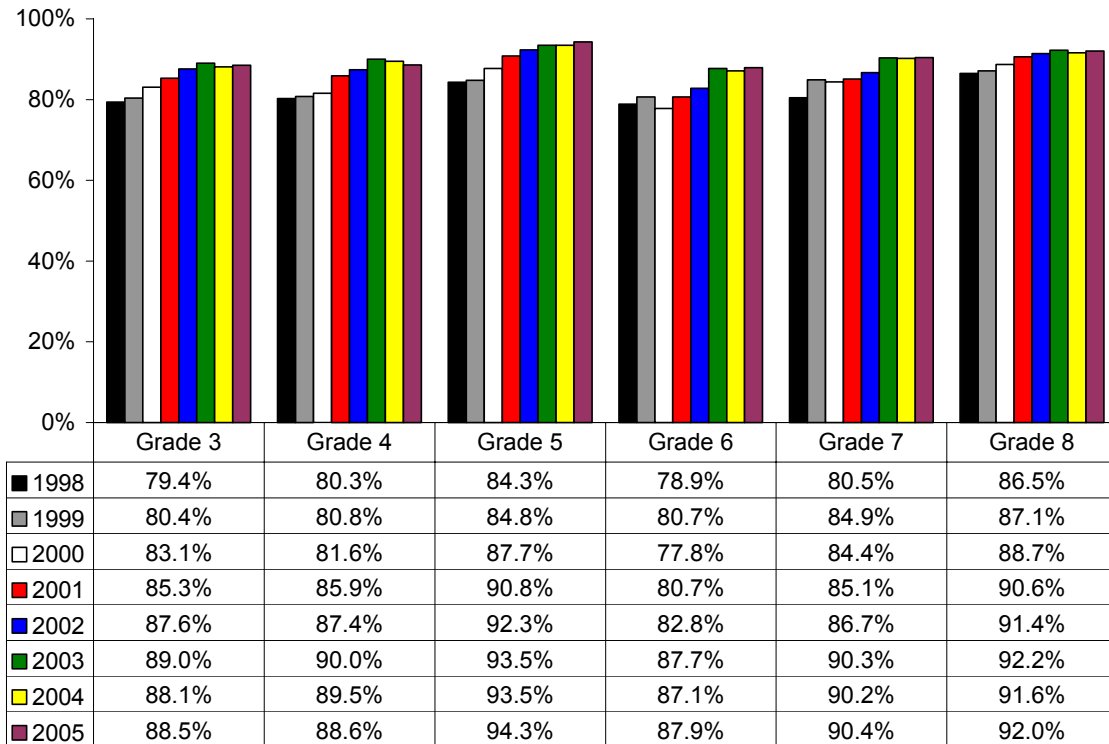


ACHIEVEMENT OVER TIME BY GRADE LEVEL & COHORT

By comparing EOG exam results for a grade level to results achieved in previous years, we see some indication of changes in achievement over time, although it must be noted that different groups of students are in each grade level each year. The following graphs (Figures 5 and 6) show changes within each grade level over the past eight years in reading and mathematics.

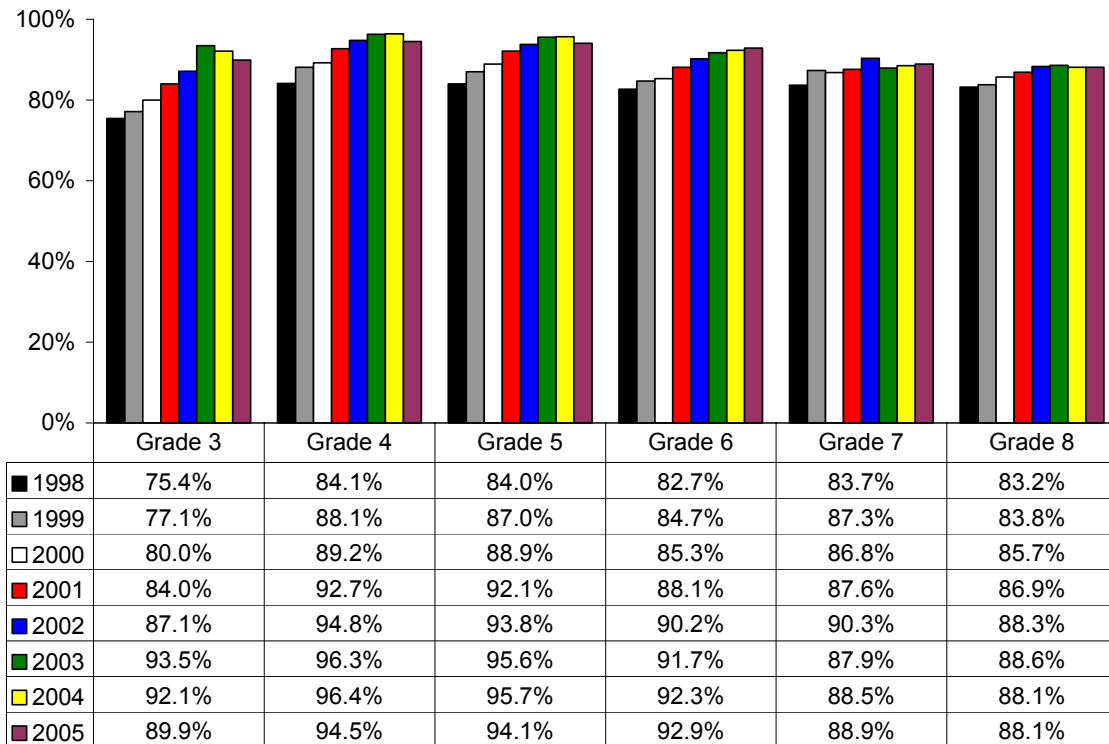
In reading, the percentage of students scoring at or above Level III increased slightly from the previous year for all grade levels except Grade 4. However, over the past three years, the overall trend across all grade levels has been no change.

Figure 5
Percentage of WCPSS Students at/above Level III in Reading
by Grade, 1997-98 to 2004-05



Compared to the previous year, the percentage of students scoring at or above Level III in mathematics in 2004-05 fell slightly in grades 3 through 5 while grades 6 through 8 either held steady or showed slight improvement. The slight drops in grades 3 through 5 may have been due in part to the teaching of a “transitional” curriculum in 2004-05 in response to the state’s scheduled revising of the mathematics Standard Course of Study (SCS). While a new curriculum was inserted for the transition year, the tests in 2004-05 were based on the old curriculum. The mathematics tests in 2005-06 will be based on the new curriculum, and teachers will be teaching the new SCS without having to also cover old topics that are no longer included.

Figure 6
Percent of WCPSS Students at/above Level III in Mathematics
By Grade, 1997-98 to 2004-05



Achievement Over Time by Cohort

One important way of examining test scores is to follow the progress of a “cohort” of students (i.e., a group of students progressing through the grade levels) over time. The shaded boxes in Tables 2 and 3 below show the achievement level scores that give a rough approximation of achievement over time for a cohort of students. For example, the cohort of students in grade 3 in 1999-2000 completed grade 8 in 2004-05. Over time, the percentage of students in that cohort who were in Levels III and IV, and therefore considered to be at or above grade level in reading, increased from 83.1% in 1999-2000 to 92.0% in 2004-05, with a decline in grade 6. Since not all grade 3 students from 1999-2000 necessarily stayed in the system for six years and/or were promoted to the next grade each year during that span, this gives only an approximate look at progress over time for a cohort.

Table 2
Percentage of WCPSS Students at/above Level III in Reading,
1999-2000 to 2004-05

Grade	1999-00	2000-01	2001-02	2002-03	2003-04	2004-05
3	83.1	85.3	87.6	89.0	88.1	88.5
4	81.6	85.9	87.4	90.0	89.5	88.6
5	87.7	90.8	92.3	93.5	93.5	94.3
6	77.8	80.7	82.8	87.7	87.1	87.9
7	84.4	85.1	86.7	90.3	90.2	90.4
8	88.7	90.6	91.4	92.2	91.6	92.0

Mathematics achievement for the cohort of students who were in grade 3 in 1999-2000 and completed grade 8 in 2004-05 shows growth for the first three years, but then declines each year after grade 5. The percentage of students in that cohort who were at or above Level III, and therefore considered to be at or above grade level in mathematics, increased overall from 80.0% in grade 3 to 88.1% in grade 8.

Table 3
Percentage of WCPSS Students At/Above Level III in Mathematics,
1999-2000 to 2004-05

Grade	1999-00	2000-01	2001-02	2002-03	2003-04	2004-05
3	80.0	84.0	87.1	93.5	92.1	89.9
4	89.2	92.7	94.8	96.3	96.4	94.5
5	88.9	92.1	93.8	95.6	95.7	94.1
6	85.3	88.1	90.2	91.7	92.3	92.9
7	86.8	87.6	90.3	87.9	88.5	88.9
8	85.7	86.9	88.3	88.6	88.1	88.1

SCALE SCORES

EOG scale scores were developed by staff at the Thurstone Psychometric Laboratory at UNC-Chapel Hill. Scale scores cover the entire span from grade 3 through grade 8, and are designed to show academic growth over time. The scales were originally designed to begin near 100 and end near 200 with a mean of approximately 150 (anchored at grade 5). Mean (average) scale scores for cohorts are expected to increase as students move through grade levels and are an important way to track group changes from year to year.

New reading scale scores were developed by NCDPI and used for reporting results on new reading tests administered for the first time in 2002-03. The new scale range goes from 213 to 290. The mathematics scale scores were recalibrated and implemented along with new mathematics tests in 2000-01. The mathematics scale ranges from 211 to 310. Tables 4 and 5 show mean scale scores in reading and mathematics by grade level.

Overall, mean reading scores have been largely flat since 2002-03 across all grade levels. Since 2000-01, mean mathematics scores have increased slowly across all grade levels, with the exception of grades 3 through 5, where they dipped slightly in 2004-05. These patterns of means largely mimic the aforementioned achievement level results for each subject.

Table 4
WCPSS Reading Scale Score Means by Grade, 1998-2005

Grade	1997-98	1998-99	1999-00	2000-01	2001-02	2002-03	2003-04	2004-05
3	148.2	148.7	149.6	150.2	150.9	250.6	250.3	250.5
4	152.4	152.3	152.9	154.1	154.4	255.0	255.0	254.9
5	157.2	157.1	158.4	159.0	159.4	259.6	259.5	259.7
6	158.5	159.4	158.9	159.8	160.3	261.1	261.2	261.4
7	161.7	162.4	162.4	162.7	163.0	263.6	263.7	263.7
8	164.4	164.7	165.0	165.8	165.9	266.6	266.3	266.5

Note: Reading scale score ranges were recalculated by NCDPI in 2002-03. Comparisons to years prior to 2002-03 are not valid.

Table 5
WCPSS Mathematics Scale Score Means by Grade, 1998-2005

Grade	1997-98	1998-99	1999-00	2000-01	2001-02	2002-03	2003-04	2004-05
3	144.9	145.3	146.8	253.7	254.6	255.6	255.2	254.9
4	154.0	155.0	155.9	259.1	259.9	261.4	261.6	260.9
5	160.1	161.9	163.0	263.8	264.9	265.7	266.0	265.5
6	166.1	167.1	167.8	266.1	267.1	268.1	268.4	269.0
7	172.5	173.7	174.2	270.5	271.8	271.2	271.7	272.3
8	177.4	177.5	178.4	273.7	274.6	274.6	274.5	275.1

Note: Mathematics scale score ranges were recalculated by NCDPI in 2000-01. Comparisons to years prior to 2000-01 are not valid.

DISAGGREGATED RESULTS FOR 2004-05

This section of the report presents EOG results for different subgroups of students. Groupings are based on gender, race and ethnicity, FRL (free or reduced-price lunch) status, SWD (students with disabilities) status, LEP (limited English proficient) status, and AG (academically gifted) status. Table 6 shows the percentage of all grade 3-8 students who scored at or above grade-level in reading and mathematics in 2003-04 and 2004-05. Figures 7 through 12 compare the performance of different sets of groups over time, and Tables 7 and 8 show disaggregated results for all grade levels for 2004-05 compared to 2003-04.

Table 6
Percentage of WCPSS Grade 3-8 Students at/above Level III in Reading and Mathematics
For Selected Subgroups, 2003-04 to 2004-05

Subgroup	Reading		Mathematics	
	2003-04	2004-05	2003-04	2004-05
All Students	90.0	90.4	92.1	91.4
Male	88.1	88.5	91.3	90.9
Female	92.0	92.3	93.0	92.5
White	96.6	96.7	97.5	97.5
Black	78.4	79.8	81.5	80.7
Asian	96.5	96.4	98.3	97.7
Hispanic/Latino	76.1	77.8	85.4	85.0
American Indian	89.3	93.1	89.9	92.4
Multiracial	91.8	91.6	93.9	92.4
Not FRL	95.4	95.7	96.2	96.1
FRL	75.2	77.1	81.1	80.4
Not SWD	94.1	94.0	95.7	94.8
SWD	69.0	71.0	73.8	73.6
Not LEP	91.1	91.5	92.6	92.3
LEP	64.2	63.8	79.7	77.8
AG	100.0	100.0	100.0	100.0

RESULTS BY GENDER

A higher percentage of female students met or exceeded grade-level standards than male students in both reading and mathematics. The percentage of grade 3-8 male and female students who scored at or above Level III rose slightly in reading and declined slightly in mathematics.

RESULTS BY ETHNICITY

Overall, the percentage of students in each ethnic group meeting or exceeding grade-level standards in reading either remained about the same or improved slightly when compared to the previous year. In contrast, the percentage of students in each ethnic group meeting or exceeding grade-level standards in mathematics either remained the same or declined slightly, with the exception of American Indian students who demonstrated a 2.5 percentage point increase.

The gaps in achievement on EOG exam results by ethnic subgroups remained basically constant between 2003-04 and 2004-05. This was the second consecutive year in which these gaps did not change appreciably. More than 96% of all White and Asian students in grades 3-8 scored at Level III or IV on both the reading and mathematics EOG exams. The gaps between these groups and Black and Hispanic/Latino students are generally larger in reading (18-20 points) than in mathematics (13-17 points).

RESULTS FOR STUDENTS RECEIVING FREE OR REDUCED-PRICE LUNCH

Historically, students from economically disadvantaged families have scored lower as a group on EOG tests than students from middle- and upper-income families. WCPSS uses eligibility for the federal government's free or reduced-price lunch program as its measure of family income. Results in 2004-05 show that the percentage of all grade 3-8 students participating in the FRL program who met or exceeded grade-level standards rose 1.9 percentage points in reading and dropped 0.7 percentage points in mathematics compared to 2003-04. The achievement gap between this group of students and those not participating in FRL shrank somewhat in reading, as the percentage of non-FRL students scoring at or above Level III increased by only 0.3 percentage points in that subject, but grew slightly in mathematics, where the decline was only 0.1 points for non-FRL students.

RESULTS FOR STUDENTS WITH DISABILITIES

The percentage of all grade 3-8 students with disabilities meeting or exceeding grade-level standards in reading rose 2 percentage points in 2004-05. In mathematics, the percentage dipped by just 0.2 percentage points. Despite this small drop in mathematics, the achievement gap between this group of students and all other students shrank slightly in 2004-05 as the percentage of students without disabilities who scored at or above Level III dropped 0.1 points in reading but dipped by 0.9 percentage points in mathematics.

RESULTS FOR STUDENTS WITH LIMITED ENGLISH PROFICIENCY

The percentage of all grade 3-8 students with limited English proficiency who scored at or above Level III declined by 0.4 percentage points in reading and by 1.9 percentage points in mathematics. The achievement gap between this group and other students increased for the second consecutive year to 27.7 percentage points in reading and 14.5 percentage points in mathematics.

Figure 7
Percentage of WCPSS Grade 3-8 Students at/above Level III
in Reading by Ethnicity, 1997-98 to 2004-05

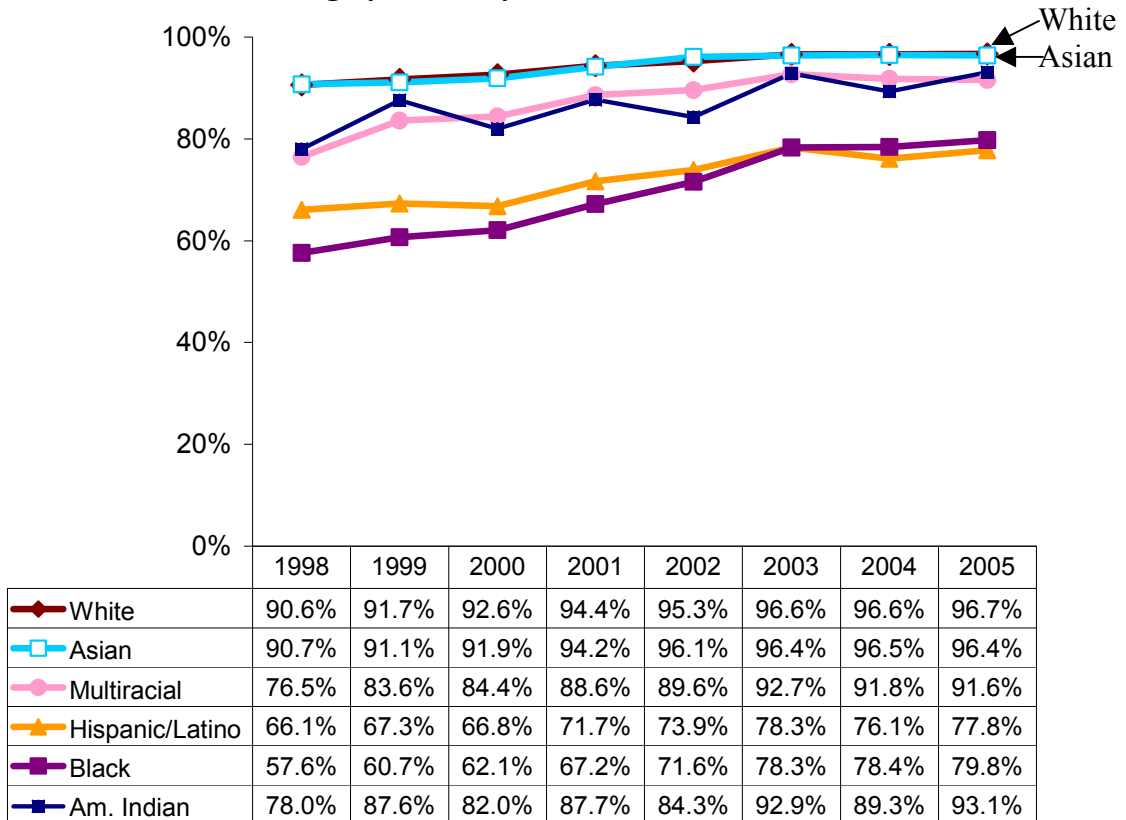


Figure 8
Percentage of WCPSS Grade 3-8 Students at/above Level III
in Mathematics by Ethnicity, 1997-98 to 2004-05

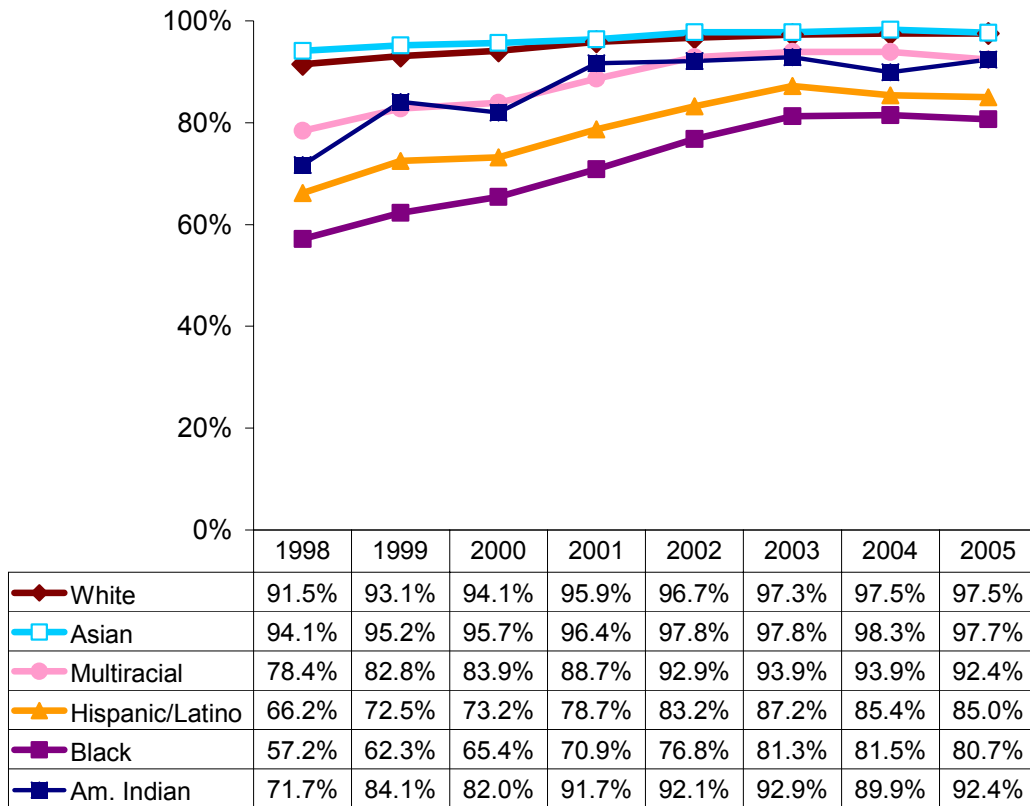


Figure 9
Percentage of WCPSS Grade 3-8 Students at/above Level III
in Reading by FRL Status, 1997-98 to 2004-05

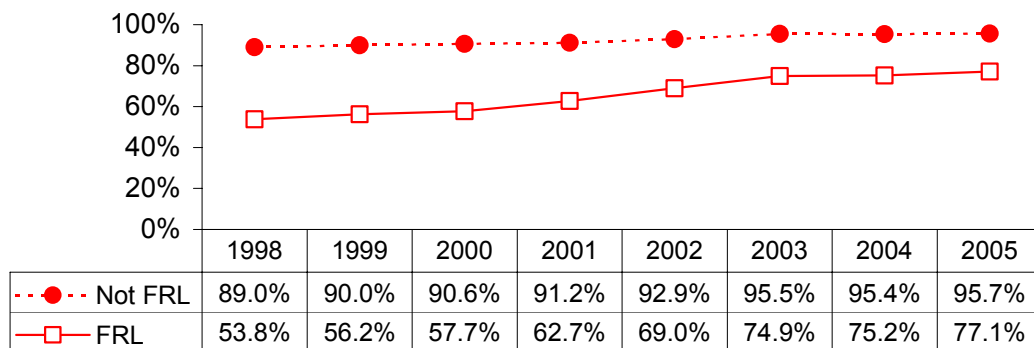


Figure 10
Percentage of WCPSS Grade 3-8 Students at/above Level III
in Mathematics by FRL Status, 1997-98 to 2004-05

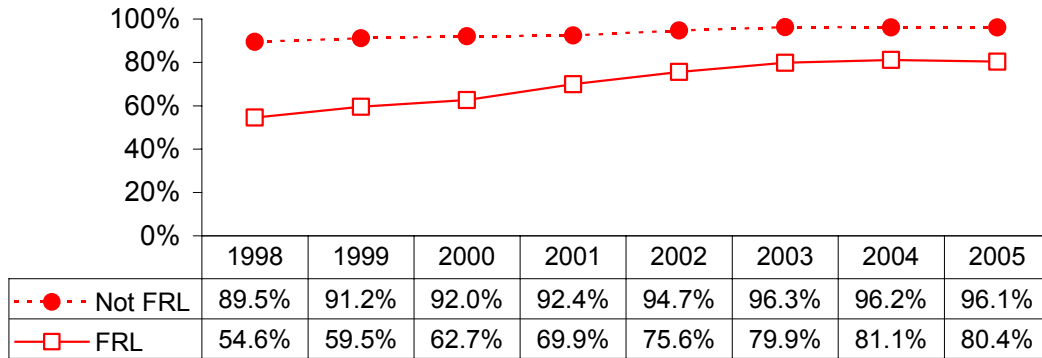


Figure 11
Percentage of WCPSS Grade 3-8 Students at/above Level III
in Reading by Special Education Status, 1997-98 to 2004-05

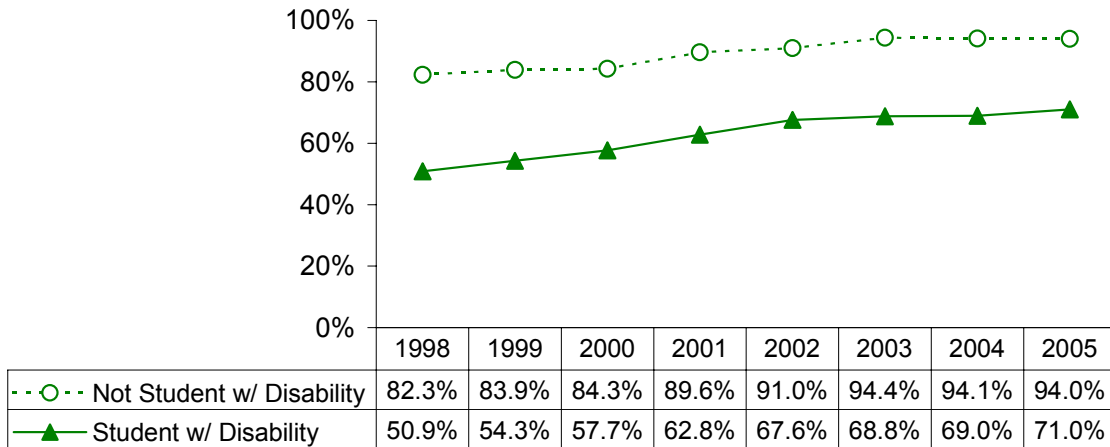


Figure 12
Percentage of WCPSS Grade 3-8 Students at/above Level III
in Mathematics by Special Education Status, 1997-98 to 2004-05

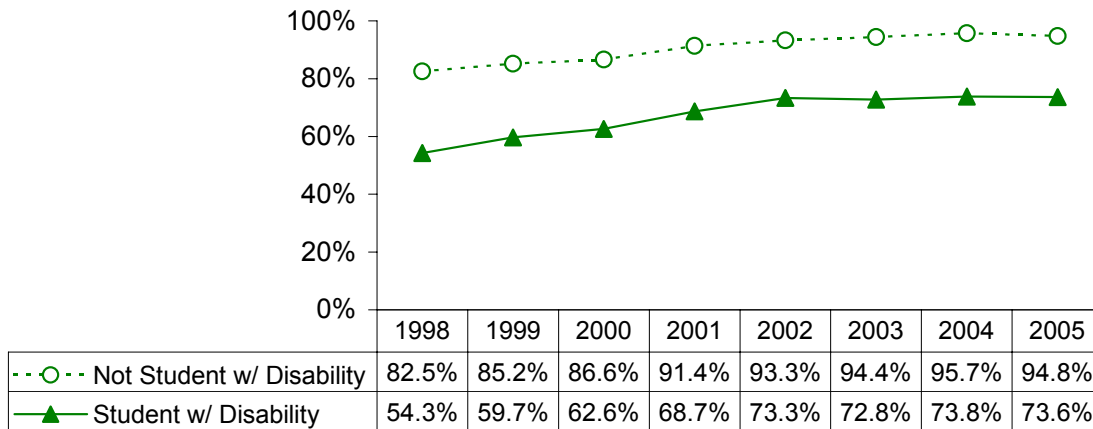


Table 7
Percentage of Students at/above Level III and Number of Students Tested in Reading
by Grade and Subgroup, 2003-04 and 2004-05

Category	Grades 3-8		Grade 3		Grade 4		Grade 5		Grade 6		Grade 7		Grade 8	
	2004	2005	2004	2005	2004	2005	2004	2005	2004	2005	2004	2005	2004	2005
All Students	90.0	90.4	88.1	88.6	89.5	88.7	93.5	94.3	87.1	88.0	90.2	90.5	91.6	92.1
	50,792	52,431	8,369	8,689	8,459	8,663	8,398	8,800	8,448	8,749	8,627	8,734	8,491	8,796
Male	88.1	88.5	86.1	87.0	87.8	86.6	92.1	93.4	84.5	85.2	88.0	88.2	90.0	90.6
	25,908	26,680	4,358	4,429	4,355	4,501	4,266	4,511	4,237	4,461	4,378	4,356	4,314	4,422
Female	92.0	92.3	90.3	90.3	91.3	91.1	94.9	95.2	89.7	90.9	92.4	92.7	93.4	93.7
	24,884	25,751	4,011	4,260	4,104	4,162	4,132	4,289	4,211	4,288	4,249	4,378	4,177	4,374
White	96.6	96.7	95.4	95.8	96.1	95.6	97.9	98.5	96.1	95.8	96.9	97.0	97.3	97.9
	29,480	29,569	4,783	4,738	4,793	4,910	4,912	4,931	4,888	4,961	5,041	4,936	5,063	5,093
Black	78.4	79.8	74.8	75.9	77.9	76.9	86.1	87.5	71.7	74.3	78.7	80.4	81.4	83.1
	14,260	14,572	2,200	2,257	2,320	2,267	2,321	2,425	2,455	2,531	2,506	2,562	2,458	2,530
Asian	96.5	96.4	95.5	97.2	97.8	96.6	96.9	97.9	96.1	95.3	95.9	95.4	96.7	95.9
	2,093	2,337	359	459	370	381	360	386	337	382	337	367	330	362
Hispanic/Latino	76.1	77.8	75.2	76.7	76.9	75.2	80.7	86.5	70.3	73.5	76.0	77.5	77.4	76.3
	3,341	4,054	682	828	659	757	533	724	532	578	505	614	430	553
American Indian	89.3	93.1	88.9	90.9	89.3	96.3	90.0	96.4	76.2	85.7	100.0	85.7	88.5	100.0
	149	144	27	22	28	27	20	28	21	21	27	21	26	25
Multiracial	91.8	91.6	88.7	89.4	92.7	89.4	96.8	95.4	87.4	94.2	90.1	87.2	96.2	94.4
	1,469	1,755	318	385	289	321	252	306	215	276	211	234	184	233
FRL	75.2	77.1	72.2	75.1	75.3	73.8	83.1	85.7	67.9	72.0	76.4	76.6	76.6	79.3
	13,534	15,077	2,399	2,686	2,439	2,589	2,276	2,611	2,275	2,457	2,200	2,456	1,945	2,278
SWD	69.0	71.0	66.7	68.3	67.0	68.1	76.7	79.9	64.1	66.2	68.8	69.6	70.2	74.0
	8,341	8,271	1,335	1,215	1,307	1,426	1,410	1,351	1,368	1,424	1,472	1,413	1,449	1,442
LEP	64.2	63.8	66.3	67.8	69.7	62.1	73.2	77.1	53.6	56.4	56.0	59.6	56.4	52.6
	1,992	2,106	469	485	456	414	339	375	276	280	241	282	211	270

Table 8
Percentage of Students at/above Level III and Number of Students Tested in Mathematics
by Grade and Subgroup, 2003-04 and 2004-05

Category	Grades 3-8		Grade 3		Grade 4		Grade 5		Grade 6		Grade 7		Grade 8	
	2004	2005	2004	2005	2004	2005	2004	2005	2004	2005	2004	2005	2004	2005
All Students	92.1	91.4	92.1	90.3	96.4	94.5	95.7	94.4	92.3	93.1	88.5	89.0	88.0	88.3
	50,831	52,499	8,379	8,716	8,479	8,686	8,405	8,812	8,449	8,755	8,628	8,737	8,491	8,793
Male	91.3	90.9	91.7	90.4	95.6	94.4	95.2	94.0	91.0	91.8	87.4	87.2	86.8	87.1
	25,943	26,728	4,369	4,447	4,371	4,518	4,271	4,521	4,236	4,464	4,381	4,358	4,315	4,420
Female	93.0	92.5	92.4	90.2	97.2	94.6	96.2	94.8	93.6	94.5	89.6	90.8	89.3	89.5
	24,888	25,771	4,010	4,269	4,108	4,168	4,134	4,291	4,213	4,291	4,247	4,379	4,176	4,373
White	97.5	97.5	97.9	96.7	99.0	98.6	98.4	98.5	97.9	97.8	96.3	96.9	95.7	96.3
	29,496	29,580	4,786	4,744	4,804	4,916	4,914	4,933	4,888	4,958	5,042	4,935	5,062	5,094
Black	81.5	80.7	80.4	77.0	91.2	88.2	90.5	86.6	82.0	84.6	73.9	75.5	72.2	73.0
	14,268	14,596	2,202	2,266	2,324	2,275	2,324	2,432	2,455	2,535	2,505	2,564	2,458	2,524
Asian	98.3	97.7	98.3	97.6	99.5	99.2	98.1	99.0	98.8	96.9	97.1	96.5	98.2	96.7
	2,097	2,341	359	461	371	381	360	386	337	383	339	368	331	362
Hispanic/Latino	85.4	85.0	85.3	85.1	92.9	89.7	90.3	89.3	84.6	86.4	76.8	79.5	79.3	77.5
	3,352	4,083	687	838	663	766	535	727	533	582	504	615	430	555
American Indian	89.9	92.4	92.6	81.8	96.4	96.3	100.0	100.0	85.7	100.0	85.2	85.7	80.8	88.0
	149	144	27	22	28	27	20	28	21	21	27	21	26	25
Multiracial	93.9	92.4	93.4	91.9	97.6	94.4	96.8	95.8	92.1	94.6	88.6	85.0	93.5	90.6
	1,469	1,755	318	385	289	321	252	306	215	276	211	234	184	233
FRL	81.1	80.4	80.8	78.9	90.7	87.5	88.8	86.3	81.2	82.9	72.4	74.3	69.8	71.4
	13,558	15,129	2,407	2,705	2,448	2,606	2,282	2,621	2,275	2,463	2,202	2,460	1,944	2,274
SWD	73.8	73.6	78.1	72.0	85.6	83.6	82.2	81.9	72.8	75.1	64.1	65.3	61.8	63.9
	8,365	8,320	1,343	1,236	1,320	1,443	1,416	1,362	1,367	1,427	1,472	1,415	1,447	1,437
LEP	79.7	77.8	80.6	80.2	90.5	84.1	87.4	84.6	75.1	79.3	64.0	68.1	65.6	62.9
	2,012	2,135	474	494	465	422	342	377	277	285	242	285	212	272

DISCUSSION

Overall, End-of-Grade (EOG) test performance for students in grades 3-8 continues to be high, with over 90% of students scoring in Level III or IV in reading and mathematics. Reading scores tended to show more improvement than mathematics scores in 2004-05, but for the second consecutive year, most of the changes in performance (positive and negative) were small, both at the overall level and among the various subgroups of students whose results are reported.

Interpreting overall test performance as well as trends in performance must always take contextual factors into account. A complex set of influences come together each year to determine how well students perform on the various tests administered by WCPSS, not the least of which is the quality of the instruction provided. Beyond that, however, factors beyond classroom instruction also exert some influence on testing outcomes, and any discussion of the significance of test results must take these into account as well. Two such issues that may have played a role in 2004-05 are detailed below.

MATHEMATICS CURRICULUM CHANGES

One likely influence on the observed EOG mathematics results for 2004-05 is the aforementioned transitional curriculum that was in place that year. Essentially, this means that teachers were responsible for covering the goals and objectives for their grade level in the “old” curriculum and the goals and objectives in the “new” curriculum, while the EOG test was based entirely on the “old” curriculum. This phenomenon occurs in the testing program every time that the state’s curriculum standards change (approximately every 5 years in each subject area), and the magnitude of the difference between the “old” and “new” curricula will determine the extent to which the “old” test matches the content students were actually taught. The mismatch between what teachers were expected to teach in 2004-05 and what the EOG mathematics tests were measuring was more pronounced in grades 3-5 than in grades 6-8, and the system adopted new mathematics teaching materials in grades 3-5 in 2004-05 as well. Not surprisingly, grades 3-5 were where WCPSS saw the biggest drop in mathematics scores in 2004-05. With a better match between curriculum and test in 2005-06, EOG mathematics scores are anticipated to bounce back to higher levels in 2005-06.

STUDENT POPULATION CHANGES

Another factor, which may be less temporary in nature than the first, is the changing demography of the school system. The well-documented growth in the WCPSS student population in recent years has not been distributed equally across all student subpopulations. In particular, the population of students who are eligible for free or reduced-price lunch (a proxy for family income) has increased disproportionately. While the rise in student population over the past four years has hovered around 4-5% per year, the concomitant increase in the percentage of students who are eligible for free or reduced-price lunch has been between 10-14% per year. This phenomenon is also evident in the data on numbers of tested students in Tables 7 and 8. Given that (a) a larger percentage of WCPSS students each year are coming from homes with significant economic challenges, and (b) this group of students has historically scored lower than

other students on EOG tests (see Figures 9 and 10), then all other things being equal, a slight decline in scores over the past few years might have been expected. But instead, scores have been largely unchanged. Therefore, the plateau that WCPSS has been experiencing over the past few years with respect to EOG test performance may be related in part to changes in demography. Finding ways to be successful with historically under-achieving subgroups is an ongoing effort in every school system, and even greater vigilance in this area will clearly be required in the coming years to reach the student achievement goals established by WCPSS as well as those of the federal No Child Left Behind Act.

Appendix A
Percent Of Elementary Students In Levels III And IV On EOG Tests For Three Years

		Reading			Mathematics		
		2003	2004	2005	2003	2004	2005
304	3rd Gd:	96.7	94.9	93.0	99.3	96.4	93.9
Adams Elementary	4th Gd:	96.9	95.3	92.0	99.2	97.3	94.3
	5th Gd:	94.7	97.0	94.0	94.7	97.7	94.1
	<hr/>						
308	3rd Gd:	89.5	94.0	90.1	93.3	95.7	89.1
Apex Elementary	4th Gd:	96.1	93.8	93.8	97.6	96.4	97.0
	5th Gd:	94.4	97.8	98.2	95.1	99.3	96.5
	<hr/>						
320	3rd Gd:	75.9	89.6	89.5	80.5	92.2	89.5
Aversboro Elementary	4th Gd:	90.4	79.4	83.5	97.3	92.8	89.9
	5th Gd:	88.4	96.2	90.4	89.9	100.0	89.4
	<hr/>						
326	3rd Gd:	89.5	92.8	86.1	94.2	92.8	87.8
Baileywick Elementary	4th Gd:	90.4	91.7	91.8	93.6	94.1	94.8
	5th Gd:	95.6	92.1	93.3	97.8	95.5	91.2
	<hr/>						
327	3rd Gd:	91.9	88.5	87.4	93.6	93.4	92.0
Ballentine Elementary	4th Gd:	92.2	86.8	89.3	97.4	94.7	93.4
	5th Gd:	85.4	90.1	95.9	95.8	95.1	94.9
	<hr/>						
328	3rd Gd:	98.1	95.6	95.2	99.4	99.1	97.6
Baucom Elementary	4th Gd:	95.7	98.0	95.8	97.8	98.6	100.0
	5th Gd:	97.0	95.7	99.2	98.5	98.6	98.5
	<hr/>						
334	3rd Gd:	94.4	94.7	98.9	98.4	96.8	95.7
Brassfield Elementary	4th Gd:	94.9	99.0	95.8	97.5	100.0	97.9
	5th Gd:	100.0	98.0	98.0	97.2	97.0	99.0
	<hr/>						
336	3rd Gd:	76.1	74.2	67.1	83.0	83.3	67.1
Brentwood Elementary	4th Gd:	70.6	84.3	75.4	92.9	90.4	90.1
	5th Gd:	86.6	96.9	88.3	92.7	95.4	89.8
	<hr/>						
340	3rd Gd:	85.0	80.0	86.4	89.9	89.3	85.3
Briarcliff Elementary	4th Gd:	89.9	81.8	89.7	97.5	95.5	92.9
	5th Gd:	92.9	93.2	90.1	96.5	98.7	85.2
	<hr/>						
344	3rd Gd:	77.9	85.9	84.4	83.1	87.3	87.0
Brooks Elementary	4th Gd:	93.6	82.1	80.8	91.9	91.7	90.4
	5th Gd:	92.3	92.9	93.7	93.9	98.6	88.4
	<hr/>						

Appendix A
Percent Of Elementary Students In Levels III And IV On EOG Tests For Three Years

		Reading			Mathematics		
		2003	2004	2005	2003	2004	2005
352 Bugg Elementary	3rd Gd:	83.0	83.8	86.4	84.9	79.4	77.3
	4th Gd:	87.3	84.5	92.2	100.0	93.1	95.3
	5th Gd:	92.1	89.7	94.8	100.0	93.1	89.7
362 Carver Elementary	3rd Gd:	80.2	73.6	85.2	97.9	91.9	86.3
	4th Gd:	76.1	80.4	79.8	97.7	94.6	97.0
	5th Gd:	86.9	83.5	80.2	89.7	90.1	89.7
364 Cary Elementary	3rd Gd:	89.3	87.9	92.7	99.0	94.4	95.9
	4th Gd:	92.1	94.6	90.2	98.9	99.1	97.9
	5th Gd:	95.4	92.2	98.9	97.2	92.2	98.9
376 Combs Elementary	3rd Gd:	95.8	93.9	97.0	99.0	97.0	95.1
	4th Gd:	96.8	91.8	92.5	99.0	98.0	97.2
	5th Gd:	98.7	97.0	91.9	96.2	98.0	94.9
380 Conn Elementary	3rd Gd:	79.3	84.8	85.5	87.4	88.6	89.2
	4th Gd:	74.4	88.0	83.3	91.5	91.6	93.1
	5th Gd:	80.5	90.0	85.7	90.9	96.3	84.4
384 Creech Road Elementary	3rd Gd:	80.5	83.9	87.6	92.9	93.1	91.1
	4th Gd:	82.9	83.8	84.5	94.6	95.5	93.8
	5th Gd:	84.0	90.6	90.8	90.4	94.0	91.7
390 Davis Drive Elementary	3rd Gd:	100.0	98.1	98.2	98.9	99.4	99.4
	4th Gd:	98.8	99.4	99.3	100.0	99.4	100.0
	5th Gd:	99.5	97.7	98.4	100.0	99.4	99.5
393 Dillard Dr. Elementary	3rd Gd:	90.8	93.2	86.4	96.6	97.7	93.9
	4th Gd:	88.6	91.7	96.8	94.3	97.2	98.9
	5th Gd:	95.4	99.0	94.6	96.3	98.0	95.9
396 Douglas Elementary	3rd Gd:	88.1	88.4	86.7	96.4	92.8	92.0
	4th Gd:	83.6	91.1	87.1	95.9	97.5	92.4
	5th Gd:	98.6	90.9	88.3	95.8	95.5	83.5
398 Durant Road Elementary	3rd Gd:	92.7	91.6	89.6	96.8	95.2	89.9
	4th Gd:	95.6	93.2	87.2	99.5	97.6	91.8
	5th Gd:	99.0	94.8	94.4	98.4	96.3	91.7

Appendix A
Percent Of Elementary Students In Levels III And IV On EOG Tests For Three Years

		Reading			Mathematics		
		2003	2004	2005	2003	2004	2005
413	3rd Gd:			80.2			81.1
Forestville Road Elementary	4th Gd:			85.7			95.2
	5th Gd:			94.0			90.4
<hr/>							
414	3rd Gd:	88.2	85.5	92.5	94.1	94.8	93.4
Farmington Woods Elementary	4th Gd:	90.8	94.6	93.0	96.4	99.1	95.7
	5th Gd:	94.5	92.7	96.0	97.3	91.7	92.0
<hr/>							
415	3rd Gd:	82.2	81.0	74.1	88.1	88.6	80.6
Fox Road Elementary	4th Gd:	85.0	88.0	79.9	92.5	95.8	92.3
	5th Gd:	90.2	89.5	90.7	94.8	93.2	91.3
<hr/>							
416	3rd Gd:	87.2	84.1	78.8	85.9	79.7	87.1
Fuller Elementary	4th Gd:	85.7	88.3	85.3	95.2	92.2	93.3
	5th Gd:	95.7	87.5	92.5	95.7	88.6	96.7
<hr/>							
420	3rd Gd:	88.5	82.5	91.0	89.8	86.0	92.0
Fuquay-Varina Elementary	4th Gd:	84.6	84.0	83.3	96.2	96.0	95.0
	5th Gd:	83.8	93.1	92.7	89.9	92.0	92.7
<hr/>							
439	3rd Gd:	99.1	96.2	99.3	100.0	98.7	99.3
Green Hope Elementary	4th Gd:	99.1	98.5	96.9	100.0	100.0	98.5
	5th Gd:	100.0	100.0	100.0	100.0	100.0	100.0
<hr/>							
440	3rd Gd:	90.8	88.1	86.4	95.0	94.1	91.6
Green Elementary	4th Gd:	95.9	86.6	94.8	96.8	92.9	92.4
	5th Gd:	96.4	92.5	91.5	100.0	92.5	90.0
<hr/>							
442	3rd Gd:	93.1	87.6	92.7	94.1	90.5	91.1
Hilburn Drive Elementary	4th Gd:	91.3	94.8	94.4	97.6	98.3	97.2
	5th Gd:	95.3	95.5	99.1	97.7	99.3	100.0
<hr/>							
443	3rd Gd:			97.5			98.8
Highcroft Drive Elementary	4th Gd:			98.8			100.0
	5th Gd:			100.0			100.0
<hr/>							
446	3rd Gd:	82.0	63.6	78.1	92.1	75.7	80.0
Hodge Road Elementary	4th Gd:	81.2	81.0	78.3	90.3	96.0	89.1
	5th Gd:	90.4	80.3	89.4	91.3	93.4	88.3

Appendix A
Percent Of Elementary Students In Levels III And IV On EOG Tests For Three Years

		Reading			Mathematics		
		2003	2004	2005	2003	2004	2005
447	3rd Gd:	82.6	81.4	89.2	87.9	91.8	89.2
Holly Springs Elementary	4th Gd:	87.2	89.4	86.8	93.3	97.7	96.7
	5th Gd:	89.3	90.9	90.0	93.6	97.7	92.7
	<hr/>						
448	3rd Gd:	90.7	91.7	93.9	91.7	88.0	94.9
Hunter Elementary	4th Gd:	92.3	89.6	91.7	98.1	94.8	94.5
	5th Gd:	97.5	96.2	89.8	97.5	98.1	84.9
	<hr/>						
449	3rd Gd:		82.6	83.7		94.6	86.7
Holly Ridge Elementary	4th Gd:		88.7	80.9		95.8	92.7
	5th Gd:		88.7	86.0		88.7	84.9
	<hr/>						
452	3rd Gd:	87.3	95.6	84.3	86.1	94.5	84.3
Jeffreys Grove Elementary	4th Gd:	84.3	87.7	92.4	96.3	96.3	95.0
	5th Gd:	86.6	93.3	95.1	94.9	97.1	92.6
	<hr/>						
453	3rd Gd:			88.8			92.0
Jones Dairy Elementary	4th Gd:			90.1			96.7
	5th Gd:			96.4			96.4
	<hr/>						
454	3rd Gd:	94.2	90.6	83.5	95.5	97.7	90.2
Heritage Elementary	4th Gd:	94.6	95.9	87.3	97.6	97.1	90.4
	5th Gd:	94.9	97.0	94.4	98.7	97.0	96.6
	<hr/>						
456	3rd Gd:	74.2	78.5	80.0	90.9	86.1	80.4
Joyner Elementary	4th Gd:	86.5	85.7	82.2	92.1	95.2	82.4
	5th Gd:	84.0	88.6	93.1	86.7	91.1	91.5
	<hr/>						
460	3rd Gd:	97.4	94.8	87.0	100.0	94.8	92.6
Kingswood Elementary	4th Gd:	91.2	95.5	92.1	100.0	100.0	92.1
	5th Gd:	100.0	100.0	89.4	100.0	100.0	97.9
	<hr/>						
464	3rd Gd:	91.2	82.6	89.6	98.3	88.7	84.9
Knightdale Elementary	4th Gd:	88.4	85.6	82.6	98.1	96.6	94.8
	5th Gd:	88.8	93.3	87.1	94.8	95.6	98.9
	<hr/>						
468	3rd Gd:	93.9	94.7	89.9	95.5	96.1	90.4
Lacy Elementary	4th Gd:	89.3	87.5	97.8	89.3	94.5	94.5
	5th Gd:	97.3	91.3	95.6	100.0	92.5	93.1
	<hr/>						

Appendix A
Percent Of Elementary Students In Levels III And IV On EOG Tests For Three Years

		Reading			Mathematics		
		2003	2004	2005	2003	2004	2005
469	3rd Gd:	93.8	95.0	94.0	96.4	95.9	93.3
Leesville Road Elementary	4th Gd:	97.7	91.5	91.0	99.2	100.0	95.5
	5th Gd:	97.5	96.0	93.8	96.6	96.7	99.2
	<hr/>						
470	3rd Gd:	92.2	93.3	84.7	92.2	98.9	88.9
Lead Mine Elementary	4th Gd:	92.3	86.7	91.0	94.9	96.7	94.4
	5th Gd:	95.6	97.1	96.1	98.9	100.0	97.4
	<hr/>						
476	3rd Gd:	84.9	88.5	83.1	85.9	90.6	83.1
Lincoln Heights Elementary	4th Gd:	88.5	85.9	83.5	93.8	96.7	88.2
	5th Gd:	90.9	93.4	93.4	100.0	94.5	92.3
	<hr/>						
480	3rd Gd:	93.7	95.6	88.2	97.4	97.4	92.4
Lockhart Elementary	4th Gd:	96.2	95.5	94.0	99.1	99.1	95.8
	5th Gd:	97.9	99.1	96.7	99.0	100.0	98.0
	<hr/>						
488	3rd Gd:	77.6	81.0	85.6	86.8	90.0	86.8
Lynn Road Elementary	4th Gd:	87.7	85.9	83.3	91.8	85.9	91.0
	5th Gd:	81.9	85.0	93.4	85.5	87.1	96.7
	<hr/>						
494	3rd Gd:	91.6	90.5	90.1	94.0	89.5	87.4
Middle Creek Elementary	4th Gd:	98.0	93.5	91.2	98.0	100.0	95.6
	5th Gd:	92.3	96.2	100.0	98.7	99.1	98.1
	<hr/>						
496	3rd Gd:	75.0	73.0	80.4	89.4	82.8	78.4
Millbrook Elementary	4th Gd:	81.4	73.5	79.8	94.3	97.4	93.3
	5th Gd:	88.0	87.2	93.0	96.0	91.9	88.8
	<hr/>						
504	3rd Gd:	97.6	96.1	96.8	100.0	98.7	97.6
Morrisville Elementary	4th Gd:	98.2	98.8	99.2	99.4	100.0	99.2
	5th Gd:	98.1	99.4	100.0	99.4	100.0	100.0
	<hr/>						
516	3rd Gd:	91.1	88.1	97.1	94.6	95.4	86.0
North Ridge Elementary	4th Gd:	96.7	93.4	93.6	95.9	99.1	94.6
	5th Gd:	94.0	96.6	97.3	95.7	100.0	94.7
	<hr/>						
520	3rd Gd:	94.1	90.2	91.4	96.6	95.1	86.4
Northwoods Elementary	4th Gd:	99.2	89.1	93.4	100.0	97.2	95.2
	5th Gd:	97.1	98.0	95.6	95.7	99.3	97.1
	<hr/>						

Appendix A
Percent Of Elementary Students In Levels III And IV On EOG Tests For Three Years

		Reading			Mathematics		
		2003	2004	2005	2003	2004	2005
522 Oak Grove Elementary	3rd Gd:	96.4	99.3	96.2	94.6	98.0	96.8
	4th Gd:	97.0	94.7	97.4	98.2	98.8	98.1
	5th Gd:	97.7	99.4	98.8	98.3	100.0	97.0
523 Olive Chapel Elementary	3rd Gd:	96.5	96.1	92.6	99.3	98.7	91.1
	4th Gd:	98.6	94.9	91.9	100.0	98.6	98.5
	5th Gd:	97.6	98.5	99.2	97.6	99.3	98.3
524 Olds Elementary	3rd Gd:	92.3	88.9	84.5	94.2	88.9	85.9
	4th Gd:	88.6	93.3	85.4	97.7	93.3	91.7
	5th Gd:	86.7	86.3	93.2	88.9	92.2	93.2
525 Partnership Elementary	3rd Gd:	81.8	85.4	82.0	89.1	85.4	82.0
	4th Gd:	87.0	90.0	83.0	97.8	100.0	86.8
	5th Gd:	91.1	98.0	98.1	97.8	94.1	96.2
530 Penny Road Elementary	3rd Gd:	88.1	97.8	93.5	95.1	97.8	93.6
	4th Gd:	93.0	91.1	92.0	100.0	97.0	92.3
	5th Gd:	96.5	97.3	95.1	94.9	99.1	94.2
531 Pleasant Union Elementary	3rd Gd:	99.1	95.5	95.0	98.1	96.6	96.6
	4th Gd:	95.7	96.0	96.9	100.0	98.0	95.9
	5th Gd:	96.8	98.8	98.1	97.9	98.8	98.1
532 Poe Elementary	3rd Gd:	76.7	85.9	89.7	88.3	87.3	89.7
	4th Gd:	95.9	82.8	80.3	95.9	95.3	86.4
	5th Gd:	95.9	100.0	90.2	95.9	100.0	91.8
536 Powell Elementary	3rd Gd:	85.1	82.1	90.1	88.8	88.1	87.3
	4th Gd:	75.0	82.2	81.1	80.7	94.1	91.9
	5th Gd:	92.0	87.4	91.7	93.2	89.7	83.3
540 Rand Road Elementary	3rd Gd:	87.7	81.5	92.4	97.3	90.1	96.7
	4th Gd:	75.7	88.9	84.5	94.3	96.3	96.6
	5th Gd:	92.2	89.7	94.0	93.5	96.2	95.2
542 Reedy Creek Elem.	3rd Gd:	85.3	77.9	81.3	95.1	82.8	87.8
	4th Gd:	81.6	88.6	89.5	91.3	95.6	93.5
	5th Gd:	92.7	88.2	94.1	95.2	94.1	94.9

Appendix A
Percent Of Elementary Students In Levels III And IV On EOG Tests For Three Years

		Reading			Mathematics		
		2003	2004	2005	2003	2004	2005
544 Rolesville Elementary	3rd Gd:	91.8	90.9	83.3	94.6	93.9	91.6
	4th Gd:	85.3	86.6	89.9	97.4	92.0	94.6
	5th Gd:	98.8	91.3	95.6	96.3	92.9	94.7
548 Root Elementary	3rd Gd:	84.4	80.8	77.5	87.0	85.9	81.4
	4th Gd:	91.4	91.7	90.7	96.6	93.1	93.3
	5th Gd:	89.2	92.8	93.6	87.7	95.7	91.0
550 Salem Elementary	3rd Gd:	91.9	89.1	93.0	94.6	94.1	94.0
	4th Gd:	97.8	95.0	89.0	100.0	97.5	94.5
	5th Gd:	99.0	99.0	97.4	97.1	99.0	96.6
560 Smith Elementary	3rd Gd:	78.2	80.3	79.7	92.3	88.2	85.0
	4th Gd:	78.7	84.4	65.3	97.8	96.1	90.4
	5th Gd:	83.0	90.8	93.5	92.1	93.1	93.6
564 Stough Elementary	3rd Gd:	86.7	88.2	86.4	89.3	92.2	91.2
	4th Gd:	87.8	78.8	87.2	97.6	93.8	92.4
	5th Gd:	93.3	89.6	87.1	96.7	94.8	88.2
568 Swift Creek Elementary	3rd Gd:	86.8	86.5	80.9	94.1	90.5	83.0
	4th Gd:	89.6	92.4	89.3	97.0	98.5	96.1
	5th Gd:	93.0	94.1	95.5	97.7	97.1	97.0
570 Timber Drive Elementary	3rd Gd:	95.9	88.5	93.4	96.5	90.8	94.0
	4th Gd:	91.6	91.3	87.4	100.0	97.7	95.6
	5th Gd:	93.8	93.8	93.6	95.3	96.9	96.6
571 Turner Creek Elementary	3rd Gd:			96.4			96.4
	4th Gd:			97.3			98.6
	5th Gd:			98.3			96.6
572 Underwood Elementary	3rd Gd:	71.2	78.3	90.7	75.0	75.0	92.7
	4th Gd:	76.9	77.8	78.9	89.7	90.7	80.6
	5th Gd:	94.7	91.5	88.4	96.5	85.1	88.6
576 Vance Elementary	3rd Gd:	84.9	85.3	94.1	92.3	88.5	91.2
	4th Gd:	80.9	88.1	85.9	89.7	98.5	96.9
	5th Gd:	93.4	83.6	93.4	95.6	90.4	93.7

Appendix A
Percent Of Elementary Students In Levels III And IV On EOG Tests For Three Years

		Reading			Mathematics		
		2003	2004	2005	2003	2004	2005
580	3rd Gd:	85.5	85.7	78.5	90.7	100.0	87.3
Vandora Springs Elem.	4th Gd:	81.5	94.2	84.1	95.1	100.0	98.4
	5th Gd:	88.1	95.5	97.4	86.9	94.0	96.1
<hr/>							
584	3rd Gd:	81.9	83.4	89.4	85.9	84.6	90.4
Wake Forest Elementary	4th Gd:	80.4	84.1	90.9	93.5	94.7	95.9
	5th Gd:	94.9	91.0	95.2	94.9	94.2	91.2
<hr/>							
593	3rd Gd:	91.8	89.0	91.8	98.0	96.6	91.4
Wakefield Elem.	4th Gd:	92.2	91.3	91.7	99.2	98.8	95.3
	5th Gd:	97.7	95.7	97.7	96.9	97.8	98.3
<hr/>							
596	3rd Gd:	90.1	94.3	96.7	93.4	94.3	94.4
Washington Elementary	4th Gd:	90.6	88.1	99.0	100.0	100.0	99.0
	5th Gd:	94.2	94.3	98.0	99.0	99.1	97.0
<hr/>							
598	3rd Gd:	90.8	92.6	91.9	94.1	92.6	96.4
Weatherstone Elem.	4th Gd:	91.3	90.8	86.5	97.7	94.7	91.5
	5th Gd:	99.1	90.1	94.2	100.0	90.8	94.3
<hr/>							
600	3rd Gd:	90.0	82.2	86.4	91.0	89.8	87.5
Wendell Elementary	4th Gd:	85.3	84.9	80.6	95.8	96.2	97.0
	5th Gd:	92.2	87.5	90.6	96.7	91.7	91.7
<hr/>							
606	3rd Gd:	90.2	87.6	90.1	97.1	92.3	90.6
West Lake Elementary	4th Gd:	91.6	92.7	88.9	96.7	99.0	96.5
	5th Gd:	95.5	96.2	97.9	97.3	97.7	98.5
<hr/>							
616	3rd Gd:	89.4	83.7	80.9	93.4	87.2	85.9
Wilburn Elementary	4th Gd:	92.9	86.8	83.0	96.8	95.0	90.4
	5th Gd:	96.9	94.8	92.5	96.3	96.1	92.6
<hr/>							
618	3rd Gd:	90.2	92.3	83.1	92.6	94.6	87.2
Wildwood Forest Elem.	4th Gd:	87.4	85.0	84.9	96.4	96.4	95.9
	5th Gd:	91.7	93.9	94.4	95.8	95.6	90.9
<hr/>							
620	3rd Gd:	88.3	94.6	78.2	88.3	80.0	85.5
Wiley Elementary	4th Gd:	94.4	84.4	80.6	93.0	87.5	90.3
	5th Gd:	86.5	91.2	88.2	90.4	88.2	89.7

Appendix A
Percent Of Elementary Students In Levels III And IV On EOG Tests For Three Years

		Reading			Mathematics		
		2003	2004	2005	2003	2004	2005
624	3rd Gd:	88.3	91.7	90.6	93.3	95.4	91.6
Willow Springs Elem.	4th Gd:	87.4	87.5	85.5	95.2	95.0	96.6
	5th Gd:	96.6	90.3	96.6	95.5	95.6	97.5
<hr/>							
626	3rd Gd:	82.8	92.8	87.5	94.8	97.1	87.5
Yates Mill Pond Elementary	4th Gd:	85.5	83.3	89.0	95.7	93.9	93.2
	5th Gd:	94.2	92.0	97.6	96.2	92.0	95.1
<hr/>							
628	3rd Gd:	84.6	87.5	91.7	89.1	90.6	90.6
York Elementary	4th Gd:	87.5	88.5	86.3	88.5	93.3	98.1
	5th Gd:	85.2	89.8	95.3	90.2	91.5	95.5
<hr/>							
632	3rd Gd:	83.2	81.1	79.6	90.7	84.9	85.1
Zebulon Elementary	4th Gd:	77.1	78.3	79.5	89.0	90.6	94.0
	5th Gd:	85.5	89.8	91.7	88.9	90.9	94.5
<hr/>							

Appendix B
Percent Of Middle School Students In Levels III And IV On EOG Tests For Three

		Reading			Mathematics		
		2003	2004	2005	2003	2004	2005
312	6th Gd:	93.1	93.8	94.0	94.0	96.5	96.2
Apex Middle	7th Gd:	92.8	94.0	95.7	92.0	92.8	94.1
	8th Gd:	94.3	93.5	95.3	93.4	91.5	95.6
	<hr/>						
356	6th Gd:	86.7	85.6	83.3	88.9	89.9	89.7
Carnage Middle	7th Gd:	88.9	89.6	86.2	86.7	84.8	87.1
	8th Gd:	88.5	91.8	92.6	81.7	89.4	85.5
	<hr/>						
360	6th Gd:	80.4	74.8	83.4	88.1	85.4	90.7
Carroll Middle	7th Gd:	81.9	84.3	89.6	80.3	86.2	88.5
	8th Gd:	90.3	83.2	94.3	84.7	79.9	89.1
	<hr/>						
370	6th Gd:	88.3	88.6	86.9	93.3	95.4	94.8
Centennial Middle	7th Gd:	83.5	90.3	87.6	84.6	93.8	86.4
	8th Gd:	88.7	88.4	87.9	81.4	81.9	83.9
	<hr/>						
388	6th Gd:	84.4	83.9	88.6	87.5	88.9	92.4
Daniels Middle	7th Gd:	88.3	88.8	86.5	83.1	86.1	84.3
	8th Gd:	90.3	88.7	89.6	87.3	86.2	84.2
	<hr/>						
391	6th Gd:	95.3	96.2	94.9	95.8	98.7	97.9
Davis Drive Middle	7th Gd:	95.8	95.9	96.7	95.3	95.4	96.7
	8th Gd:	97.3	96.2	95.6	97.3	96.2	94.1
	<hr/>						
394	6th Gd:	90.7	86.3	92.9	93.9	92.1	93.8
Dillard Dr. Middle	7th Gd:	94.4	94.4	90.6	92.6	92.8	87.5
	8th Gd:	94.3	97.1	95.6	92.3	95.0	91.3
	<hr/>						
399	6th Gd:	89.7	92.0	87.8	93.7	95.4	92.1
Durant Road Middle	7th Gd:	93.4	93.4	90.7	92.5	93.2	93.1
	8th Gd:	96.3	95.6	94.1	94.5	94.3	92.7
	<hr/>						
400	6th Gd:	80.9	86.4	85.3	87.0	91.8	92.9
Reedy Creek Middle	7th Gd:	88.4	83.9	85.5	90.5	83.9	88.3
	8th Gd:	91.2	88.9	91.0	91.9	88.9	89.4
	<hr/>						
404	6th Gd:	75.7	80.5	79.2	87.8	88.0	85.2
East Garner Middle	7th Gd:	83.4	79.9	85.9	81.9	73.9	81.5
	8th Gd:	88.4	92.9	82.2	84.4	83.2	75.3
	<hr/>						

Appendix B
Percent Of Middle School Students In Levels III And IV On EOG Tests For Three

		Reading			Mathematics		
		2003	2004	2005	2003	2004	2005
408	6th Gd:	82.1	79.5	80.5	88.5	86.0	88.3
East Millbrook Middle	7th Gd:	87.5	84.1	87.9	84.8	77.8	78.4
	8th Gd:	93.5	90.5	88.8	83.9	80.8	77.1
<hr/>							
410	6th Gd:	76.9	78.6	77.9	87.1	89.8	88.0
East Wake Middle	7th Gd:	84.6	82.9	82.5	81.0	81.1	81.5
	8th Gd:	88.6	84.0	88.1	82.7	82.4	80.4
<hr/>							
424	6th Gd:	84.7	82.6	86.4	91.1	91.5	92.5
Fuquay-Varina Middle	7th Gd:	85.3	84.9	87.5	80.3	84.5	88.6
	8th Gd:	89.4	91.6	89.7	83.8	83.3	83.4
<hr/>							
444	6th Gd:		95.4	90.4		97.4	95.8
Heritage Middle	7th Gd:			94.2			94.8
	8th Gd:						
<hr/>							
450	6th Gd:		82.8	90.5		90.8	94.7
Holly Ridge Middle	7th Gd:		89.9	89.8		88.2	88.6
	8th Gd:		89.9	93.8		83.2	89.9
<hr/>							
471	6th Gd:	91.3	93.1	91.1	93.4	93.6	93.8
Leesville Road Middle	7th Gd:	93.7	93.4	93.8	91.1	91.7	91.6
	8th Gd:	94.8	91.6	96.0	89.7	88.7	93.6
<hr/>							
472	6th Gd:	96.2	90.4	92.9	97.1	94.4	94.7
Ligon Middle	7th Gd:	95.2	94.9	91.0	90.8	91.8	90.2
	8th Gd:	93.9	94.5	95.0	92.4	90.6	90.7
<hr/>							
484	6th Gd:	95.9	94.3	91.9	97.1	95.3	95.8
Lufkin Rd. Middle	7th Gd:	98.1	96.9	90.9	97.5	97.2	92.9
	8th Gd:	95.2	96.4	90.4	95.9	95.4	88.6
<hr/>							
492	6th Gd:	88.6	89.6	88.3	89.8	95.1	93.8
Martin Middle	7th Gd:	92.3	92.1	94.7	89.9	86.4	92.2
	8th Gd:	93.3	93.1	92.1	89.4	91.6	87.5
<hr/>							
506	6th Gd:	84.3	85.8	82.8	86.1	89.7	87.0
Moore Square Museum Middle	7th Gd:	92.8	89.5	87.9	82.9	83.0	78.3
	8th Gd:		86.2	88.0		73.4	79.1

Appendix B
Percent Of Middle School Students In Levels III And IV On EOG Tests For Three

		Reading			Mathematics		
		2003	2004	2005	2003	2004	2005
512	6th Gd:	73.7	74.7	80.1	86.1	85.9	89.7
North Garner Middle	7th Gd:	83.6	80.9	85.1	86.6	85.2	77.7
	8th Gd:	80.8	84.7	85.0	78.1	79.4	79.4
	<hr/>						
551	6th Gd:			95.7			98.0
Salem Middle	7th Gd:			97.0			97.5
	8th Gd:			97.4			96.0
	<hr/>						
592	6th Gd:	86.2	80.8	84.8	90.1	91.3	91.0
Wake Forest-Rolesville Mid.	7th Gd:	85.6	88.5	93.5	81.0	88.2	90.3
	8th Gd:	87.9	87.5	92.3	83.9	83.5	88.4
	<hr/>						
594	6th Gd:	94.4	93.7	91.7	97.1	95.5	94.9
Wakefield Middle	7th Gd:	96.2	95.9	95.5	92.3	93.1	95.5
	8th Gd:	93.7	98.0	98.1	89.1	95.3	95.4
	<hr/>						
604	6th Gd:	95.8	94.6	91.6	95.6	97.0	93.6
West Cary Middle	7th Gd:	94.8	96.2	93.7	92.2	95.9	92.5
	8th Gd:	95.1	97.2	93.9	91.7	95.0	92.6
	<hr/>						
607	6th Gd:	93.7	93.4	95.4	96.4	96.7	98.4
West Lake Middle	7th Gd:	95.0	95.3	95.3	93.2	95.3	94.5
	8th Gd:	97.9	97.0	97.4	95.5	93.0	96.6
	<hr/>						
608	6th Gd:	86.4	81.0	82.7	87.8	85.5	88.6
West Millbrook Middle	7th Gd:	90.6	85.9	83.2	87.6	84.7	82.4
	8th Gd:	93.8	90.0	86.4	88.6	87.5	82.1
	<hr/>						
636	6th Gd:	83.3	83.8	77.5	90.5	89.0	90.7
Zebulon Middle	7th Gd:	84.2	87.1	87.3	80.7	81.9	85.8
	8th Gd:	89.7	86.0	89.0	84.6	80.9	87.4
	<hr/>						

Appendix C
Elementary School EOG Mean Scale Scores for Three Years

		Reading			Mathematics		
		2003	2004	2005	2003	2004	2005
304	3rd Gd:	253.5	253.2	252.6	258.7	258.6	257.4
Adams Elementary	4th Gd:	257.7	256.8	257.0	265.1	265.1	262.2
	5th Gd:	261.1	262.5	260.9	266.5	269.3	267.2
308	3rd Gd:	251.9	252.6	251.1	255.6	257.5	255.6
Apex Elementary	4th Gd:	259.5	256.4	257.2	266.2	263.2	263.2
	5th Gd:	262.1	262.9	261.2	268.7	271.2	266.3
320	3rd Gd:	247.1	248.8	250.1	251.9	253.8	254.2
Aversboro Elementary	4th Gd:	253.3	252.0	251.4	259.4	257.7	256.2
	5th Gd:	256.7	258.2	257.1	260.2	263.3	261.0
326	3rd Gd:	253.8	253.0	250.2	257.5	256.1	254.7
Baileywick Elementary	4th Gd:	256.6	256.9	255.7	261.5	262.4	261.2
	5th Gd:	262.3	260.9	260.7	267.9	267.2	265.7
327	3rd Gd:	251.1	248.4	249.2	255.5	254.0	254.0
Ballentine Elementary	4th Gd:	255.5	255.5	254.6	262.3	263.7	260.7
	5th Gd:	256.8	259.0	260.9	263.7	266.6	266.6
328	3rd Gd:	254.0	254.7	253.8	258.3	259.2	258.9
Baucom Elementary	4th Gd:	258.3	257.5	259.3	265.7	265.7	267.1
	5th Gd:	261.1	262.4	262.6	268.6	270.2	271.7
334	3rd Gd:	253.4	253.2	253.9	258.3	258.5	258.3
Brassfield Elementary	4th Gd:	257.3	257.8	258.1	264.6	264.5	263.1
	5th Gd:	263.1	262.4	264.3	270.6	271.1	270.1
336	3rd Gd:	244.7	243.9	242.5	249.4	250.7	248.2
Brentwood Elementary	4th Gd:	248.2	249.7	248.7	255.6	256.5	255.4
	5th Gd:	254.0	256.3	254.6	259.3	261.7	258.8
340	3rd Gd:	249.5	249.8	248.1	254.6	255.1	253.5
Briarcliff Elementary	4th Gd:	255.4	253.1	255.8	262.3	261.3	261.9
	5th Gd:	259.9	260.0	257.9	264.3	266.3	262.8
344	3rd Gd:	246.3	247.9	248.3	250.9	251.9	252.4
Brooks Elementary	4th Gd:	253.0	251.4	252.0	255.9	256.5	255.9
	5th Gd:	257.6	257.5	257.8	261.7	260.7	261.3
352	3rd Gd:	246.8	248.7	249.2	252.8	251.9	251.6
Bugg Elementary	4th Gd:	253.1	252.5	254.2	259.9	259.3	259.2
	5th Gd:	258.3	257.0	257.1	263.1	261.5	261.6
362	3rd Gd:	247.6	245.8	247.1	255.3	253.7	253.4
Carver Elementary	4th Gd:	249.7	251.3	250.6	259.5	259.7	259.1
	5th Gd:	255.8	254.5	255.3	261.5	260.9	260.8

Appendix C
Elementary School EOG Mean Scale Scores for Three Years

		Reading			Mathematics		
		2003	2004	2005	2003	2004	2005
364	3rd Gd:	250.2	251.5	251.3	256.6	255.9	256.9
Cary Elementary	4th Gd:	254.5	256.5	255.5	263.3	264.3	262.7
	5th Gd:	258.7	258.3	260.3	264.6	264.3	267.3
	<hr/>						
376	3rd Gd:	252.8	252.3	252.5	257.9	257.7	257.3
Combs Elementary	4th Gd:	256.5	255.4	256.8	262.8	261.8	263.2
	5th Gd:	261.0	260.2	259.7	267.4	266.8	263.9
	<hr/>						
380	3rd Gd:	247.2	248.7	247.7	252.2	255.1	252.8
Conn Elementary	4th Gd:	251.5	253.4	253.3	257.0	259.1	259.4
	5th Gd:	257.0	257.4	257.4	263.4	262.0	261.1
	<hr/>						
384	3rd Gd:	247.3	246.2	247.3	253.5	253.6	253.3
Creech Road Elementary	4th Gd:	251.0	250.9	250.7	256.4	257.6	257.6
	5th Gd:	254.0	255.6	256.0	259.0	260.7	262.1
	<hr/>						
390	3rd Gd:	255.0	254.8	256.8	259.8	259.3	261.0
Davis Drive Elementary	4th Gd:	259.4	260.2	259.0	267.7	268.3	266.4
	5th Gd:	264.0	263.4	264.3	270.7	272.1	274.6
	<hr/>						
393	3rd Gd:	251.2	252.3	249.7	257.3	256.8	254.9
Dillard Dr. Elementary	4th Gd:	253.4	255.6	256.1	258.8	261.8	260.1
	5th Gd:	259.2	259.0	260.1	265.4	263.7	265.8
	<hr/>						
396	3rd Gd:	249.7	250.9	251.3	255.2	255.8	254.4
Douglas Elementary	4th Gd:	253.0	254.0	254.9	258.4	259.0	259.4
	5th Gd:	258.9	257.6	257.1	263.8	263.1	261.3
	<hr/>						
398	3rd Gd:	251.7	250.4	250.7	256.6	255.0	255.0
Durant Road Elementary	4th Gd:	257.6	257.0	254.7	262.8	261.8	259.4
	5th Gd:	261.9	261.2	260.0	268.6	267.9	264.1
	<hr/>						
413	3rd Gd:			247.4			251.8
Forestville Road Elementary	4th Gd:			251.7			257.7
	5th Gd:			257.2			259.6
	<hr/>						
414	3rd Gd:	252.2	251.5	253.2	257.1	256.6	256.2
Farmington Woods Elementary	4th Gd:	257.0	258.2	258.0	262.7	263.8	263.1
	5th Gd:	261.3	261.6	260.9	267.3	267.4	266.7
	<hr/>						
415	3rd Gd:	247.7	247.7	244.8	252.9	253.3	250.8
Fox Road Elementary	4th Gd:	252.1	252.7	251.0	258.3	258.3	257.8
	5th Gd:	257.2	256.9	256.5	262.2	261.4	261.1
	<hr/>						
416	3rd Gd:	248.4	248.1	248.3	253.2	252.2	253.9
Fuller Elementary	4th Gd:	254.0	254.9	254.6	259.6	260.2	261.0
	5th Gd:	260.9	257.6	259.8	266.1	262.2	266.9
	<hr/>						

Appendix C
Elementary School EOG Mean Scale Scores for Three Years

		Reading			Mathematics		
		2003	2004	2005	2003	2004	2005
420	3rd Gd:	249.0	248.3	250.0	253.8	252.5	254.5
Fuquay-Varina Elementary	4th Gd:	253.9	253.3	252.8	260.9	259.9	259.7
	5th Gd:	256.0	256.8	258.0	261.8	261.2	263.1
	<hr/>						
439	3rd Gd:	253.6	254.3	255.4	257.9	258.4	258.7
Green Hope Elementary	4th Gd:	259.2	259.2	258.3	265.1	263.6	263.4
	5th Gd:	263.9	264.2	263.1	272.5	272.6	272.5
	<hr/>						
440	3rd Gd:	252.2	250.3	250.6	256.4	254.9	254.9
Green Elementary	4th Gd:	256.8	255.8	255.4	261.3	260.1	260.6
	5th Gd:	262.1	260.0	259.9	268.7	265.7	265.1
	<hr/>						
442	3rd Gd:	251.4	249.4	250.5	256.8	256.2	254.9
Hilburn Drive Elementary	4th Gd:	255.4	255.9	255.7	260.8	263.6	262.3
	5th Gd:	261.7	260.5	261.1	268.9	268.1	268.5
	<hr/>						
443	3rd Gd:			253.3			257.5
Highcroft Drive Elementary	4th Gd:			260.6			264.6
	5th Gd:			262.5			270.8
	<hr/>						
446	3rd Gd:	245.4	243.0	245.3	253.3	250.6	251.3
Hodge Road Elementary	4th Gd:	251.2	250.3	251.1	258.9	259.2	258.0
	5th Gd:	256.9	254.9	256.5	261.7	261.8	261.1
	<hr/>						
447	3rd Gd:	249.3	248.3	250.1	254.3	254.8	254.0
Holly Springs Elementary	4th Gd:	253.6	254.4	254.3	259.6	261.4	261.9
	5th Gd:	257.2	260.2	257.2	265.5	266.1	263.5
	<hr/>						
448	3rd Gd:	252.8	253.4	255.0	256.3	255.4	257.7
Hunter Elementary	4th Gd:	257.4	256.9	257.4	263.6	263.1	262.7
	5th Gd:	262.4	263.1	260.9	269.4	270.2	266.3
	<hr/>						
449	3rd Gd:		248.6	249.4		253.6	254.1
Holly Ridge Elementary	4th Gd:		256.2	254.3		263.7	260.6
	5th Gd:		256.5	258.1		261.8	262.5
	<hr/>						
452	3rd Gd:	250.7	252.7	249.1	256.5	257.7	255.0
Jeffreys Grove Elementary	4th Gd:	253.7	254.9	256.1	262.4	263.4	263.1
	5th Gd:	258.2	259.6	259.4	266.1	268.3	266.6
	<hr/>						
453	3rd Gd:			248.9			253.7
Jones Dairy Elementary	4th Gd:			255.2			260.7
	5th Gd:			260.1			265.1
	<hr/>						
454	3rd Gd:	252.1	250.6	250.4	256.4	255.6	256.2
Heritage Elementary	4th Gd:	256.2	256.6	254.1	261.2	263.2	259.9
	5th Gd:	259.7	260.0	260.0	267.1	266.5	265.5
	<hr/>						

Appendix C
Elementary School EOG Mean Scale Scores for Three Years

		Reading			Mathematics		
		2003	2004	2005	2003	2004	2005
456	3rd Gd:	247.0	246.9	246.6	252.5	253.1	250.5
Joyner Elementary	4th Gd:	254.0	252.7	251.9	260.4	259.4	256.3
	5th Gd:	256.0	258.5	259.5	260.4	264.1	262.7
	<hr/>						
460	3rd Gd:	251.1	252.6	250.0	257.4	256.7	254.4
Kingswood Elementary	4th Gd:	255.8	256.0	256.0	264.3	263.5	261.5
	5th Gd:	261.8	261.2	258.1	272.8	270.5	266.9
	<hr/>						
464	3rd Gd:	248.5	245.9	249.3	254.9	251.8	252.0
Knightdale Elementary	4th Gd:	252.3	251.7	251.8	259.3	258.7	258.1
	5th Gd:	256.2	256.7	255.7	261.3	261.4	262.3
	<hr/>						
468	3rd Gd:	252.3	253.4	253.2	258.7	258.6	257.2
Lacy Elementary	4th Gd:	257.3	256.4	259.1	263.6	263.2	265.1
	5th Gd:	262.6	262.5	263.8	267.1	269.2	269.4
	<hr/>						
469	3rd Gd:	254.3	253.6	253.3	257.7	258.1	257.9
Leesville Road Elementary	4th Gd:	258.2	256.8	256.4	264.2	263.2	262.7
	5th Gd:	261.1	261.3	261.1	268.8	268.0	268.7
	<hr/>						
470	3rd Gd:	250.8	250.3	250.1	254.7	254.5	253.2
Lead Mine Elementary	4th Gd:	255.6	254.7	253.6	260.3	261.9	258.8
	5th Gd:	260.3	260.9	259.7	267.5	267.5	267.1
	<hr/>						
476	3rd Gd:	248.9	249.0	248.6	253.0	252.9	252.3
Lincoln Heights Elementary	4th Gd:	254.0	253.6	252.2	258.9	258.7	256.8
	5th Gd:	256.8	258.7	258.0	262.2	263.5	260.1
	<hr/>						
480	3rd Gd:	251.1	250.3	248.3	256.1	254.5	253.0
Lockhart Elementary	4th Gd:	255.4	256.4	255.0	261.8	263.3	260.2
	5th Gd:	260.1	259.2	259.6	265.5	266.3	263.3
	<hr/>						
488	3rd Gd:	247.8	249.6	249.1	253.6	254.7	253.9
Lynn Road Elementary	4th Gd:	253.7	251.9	254.7	259.5	258.6	261.4
	5th Gd:	255.8	257.1	259.0	260.9	262.8	263.7
	<hr/>						
494	3rd Gd:	251.2	249.8	251.5	255.2	253.7	254.7
Middle Creek Elementary	4th Gd:	257.4	256.4	254.4	263.4	262.2	258.2
	5th Gd:	259.0	259.8	260.8	266.4	268.1	268.6
	<hr/>						
496	3rd Gd:	246.0	244.9	246.7	252.1	251.9	250.8
Millbrook Elementary	4th Gd:	249.2	250.1	251.0	256.5	257.7	257.2
	5th Gd:	257.6	254.0	257.3	262.2	258.0	260.0
	<hr/>						
504	3rd Gd:	256.5	255.3	256.5	260.4	259.0	260.7
Morrisville Elementary	4th Gd:	258.7	260.1	260.7	264.7	266.3	266.8
	5th Gd:	263.5	263.9	264.3	269.8	270.9	272.7
	<hr/>						

Appendix C
Elementary School EOG Mean Scale Scores for Three Years

		Reading			Mathematics		
		2003	2004	2005	2003	2004	2005
516	3rd Gd:	250.2	250.3	251.8	254.8	255.6	253.8
North Ridge Elementary	4th Gd:	255.0	255.1	257.0	260.0	260.5	261.1
	5th Gd:	259.5	259.6	259.0	265.7	265.3	263.4
	<hr/>						
520	3rd Gd:	252.0	250.2	250.5	255.3	255.3	254.0
Northwoods Elementary	4th Gd:	257.4	255.4	254.4	263.3	261.7	260.2
	5th Gd:	260.5	260.8	260.3	266.5	266.8	265.4
	<hr/>						
522	3rd Gd:	254.6	255.6	255.3	257.8	258.3	258.7
Oak Grove Elementary	4th Gd:	259.6	258.4	258.8	264.4	265.3	264.0
	5th Gd:	263.4	263.6	263.4	270.2	271.1	270.2
	<hr/>						
523	3rd Gd:	252.7	253.5	251.9	258.7	258.3	256.3
Olive Chapel Elementary	4th Gd:	257.4	257.2	256.4	264.5	264.6	263.1
	5th Gd:	262.2	262.6	262.8	267.1	268.2	270.6
	<hr/>						
524	3rd Gd:	252.5	251.7	249.7	255.9	256.0	254.5
Olds Elementary	4th Gd:	255.4	256.4	257.3	263.1	262.7	262.3
	5th Gd:	259.1	256.8	261.2	265.2	265.6	268.3
	<hr/>						
525	3rd Gd:	249.8	251.0	250.3	254.8	255.2	254.5
Partnership Elementary	4th Gd:	255.9	255.9	252.3	261.2	260.9	257.8
	5th Gd:	259.3	261.8	261.2	266.4	267.8	267.4
	<hr/>						
530	3rd Gd:	252.1	253.9	253.7	256.2	257.8	256.5
Penny Road Elementary	4th Gd:	255.8	255.7	256.6	262.6	262.0	261.1
	5th Gd:	261.8	262.4	261.6	266.9	270.1	266.7
	<hr/>						
531	3rd Gd:	252.4	252.5	253.8	256.8	256.5	257.9
Pleasant Union Elementary	4th Gd:	257.0	256.1	257.3	262.4	262.5	262.2
	5th Gd:	260.4	261.7	260.8	267.2	266.4	265.6
	<hr/>						
532	3rd Gd:	249.1	248.2	250.2	254.7	253.2	255.0
Poe Elementary	4th Gd:	256.7	252.8	251.6	262.4	258.9	256.8
	5th Gd:	261.1	261.6	257.3	267.0	268.9	260.9
	<hr/>						
536	3rd Gd:	249.8	248.2	247.2	254.6	254.6	252.6
Powell Elementary	4th Gd:	250.6	252.6	252.6	256.3	259.0	258.6
	5th Gd:	259.1	256.1	258.2	265.2	262.5	261.7
	<hr/>						
540	3rd Gd:	249.1	248.2	249.8	254.5	254.9	254.9
Rand Road Elementary	4th Gd:	250.7	253.5	253.7	259.1	259.8	261.7
	5th Gd:	257.4	257.1	257.5	264.6	264.8	263.4
	<hr/>						
542	3rd Gd:	248.8	246.9	248.4	255.7	252.8	252.3
Reedy Creek Elem.	4th Gd:	252.7	253.3	253.4	258.7	259.8	258.6
	5th Gd:	259.2	256.7	258.3	263.5	263.1	262.6
	<hr/>						

Appendix C
Elementary School EOG Mean Scale Scores for Three Years

		Reading			Mathematics		
		2003	2004	2005	2003	2004	2005
544	3rd Gd:	250.3	250.2	247.5	255.6	254.5	253.4
Rolesville Elementary	4th Gd:	252.3	254.0	254.1	259.3	259.9	258.5
	5th Gd:	258.1	256.6	258.8	262.2	260.6	262.2
548	3rd Gd:	250.7	249.8	248.0	255.6	254.2	252.9
Root Elementary	4th Gd:	258.1	257.1	255.2	265.4	262.9	261.9
	5th Gd:	258.1	261.0	260.2	264.6	268.4	267.1
550	3rd Gd:	252.1	252.8	252.3	257.5	257.0	257.2
Salem Elementary	4th Gd:	258.0	257.7	256.3	266.1	264.7	262.3
	5th Gd:	261.5	261.4	262.2	266.8	269.0	270.5
560	3rd Gd:	245.5	245.5	244.8	252.7	252.9	251.4
Smith Elementary	4th Gd:	249.8	250.2	248.4	257.7	257.9	256.7
	5th Gd:	253.9	254.7	254.9	259.4	258.9	258.9
564	3rd Gd:	249.4	249.9	251.0	253.8	254.8	255.6
Stough Elementary	4th Gd:	254.1	252.4	254.9	260.2	259.4	261.0
	5th Gd:	260.4	258.2	257.7	266.0	263.8	262.2
568	3rd Gd:	249.2	248.2	247.9	255.2	254.3	253.5
Swift Creek Elementary	4th Gd:	255.7	255.2	253.4	262.3	261.0	259.0
	5th Gd:	259.6	259.9	259.9	266.1	266.5	266.5
570	3rd Gd:	252.6	251.9	252.2	257.2	256.7	256.6
Timber Drive Elementary	4th Gd:	255.7	255.9	256.0	263.3	262.9	262.3
	5th Gd:	259.8	259.9	260.5	265.7	266.4	266.7
571	3rd Gd:			252.7			257.0
Turner Creek Elementary	4th Gd:			258.4			264.3
	5th Gd:			262.4			269.6
572	3rd Gd:	247.4	248.9	251.8	252.1	252.2	254.2
Underwood Elementary	4th Gd:	252.9	252.6	253.1	259.1	257.4	258.2
	5th Gd:	259.0	257.7	258.8	266.3	261.9	263.4
576	3rd Gd:	248.2	249.3	250.6	254.3	254.1	255.4
Vance Elementary	4th Gd:	251.6	253.1	252.8	259.3	261.8	260.0
	5th Gd:	258.2	256.4	258.6	264.4	263.2	262.4
580	3rd Gd:	249.5	248.5	246.7	254.1	255.0	252.2
Vandora Springs Elem.	4th Gd:	252.3	255.4	252.5	259.5	263.2	261.1
	5th Gd:	257.5	257.6	258.3	261.5	263.2	263.4
584	3rd Gd:	248.7	249.3	250.9	253.0	253.0	254.5
Wake Forest Elementary	4th Gd:	253.3	253.3	254.5	258.5	258.8	258.7
	5th Gd:	259.0	257.7	258.7	263.0	262.4	261.1

Appendix C
Elementary School EOG Mean Scale Scores for Three Years

		Reading			Mathematics		
		2003	2004	2005	2003	2004	2005
593	3rd Gd:	250.8	250.3	251.7	256.2	255.8	254.3
Wakefield Elem.	4th Gd:	254.4	255.1	255.3	261.7	262.6	261.2
	5th Gd:	260.3	260.3	261.1	265.7	266.4	267.1
596	3rd Gd:	253.2	254.0	254.1	257.8	257.4	257.1
Washington Elementary	4th Gd:	256.9	257.1	259.8	264.3	264.7	266.0
	5th Gd:	261.5	261.4	262.9	268.9	268.9	270.5
598	3rd Gd:	251.5	250.9	252.1	256.2	256.1	257.6
Weatherstone Elem.	4th Gd:	256.1	255.9	254.9	263.2	260.9	261.5
	5th Gd:	262.3	259.4	260.7	269.3	268.0	269.9
600	3rd Gd:	248.1	246.9	248.6	252.2	252.8	252.5
Wendell Elementary	4th Gd:	253.0	251.0	251.8	260.2	258.9	258.9
	5th Gd:	258.2	258.1	257.6	266.2	265.4	262.1
606	3rd Gd:	252.1	250.5	251.1	256.8	255.4	255.1
West Lake Elementary	4th Gd:	256.1	256.8	255.9	261.5	263.6	262.1
	5th Gd:	261.1	261.1	262.5	268.3	269.0	269.0
616	3rd Gd:	248.9	247.2	247.8	254.5	253.7	252.8
Wilburn Elementary	4th Gd:	252.9	253.0	251.9	259.0	259.7	258.0
	5th Gd:	258.6	257.9	257.4	264.1	263.7	262.0
618	3rd Gd:	249.2	250.5	248.7	254.4	255.2	253.1
Wildwood Forest Elem.	4th Gd:	252.9	253.2	253.1	259.6	258.8	259.6
	5th Gd:	258.5	258.6	258.9	262.4	263.8	263.0
620	3rd Gd:	251.3	255.0	247.8	254.2	254.8	253.7
Wiley Elementary	4th Gd:	257.9	255.7	255.3	262.6	262.5	260.5
	5th Gd:	260.8	261.3	258.3	268.8	267.8	264.8
624	3rd Gd:	248.6	249.2	249.9	254.7	254.6	254.4
Willow Springs Elem.	4th Gd:	252.6	253.3	252.7	260.9	259.9	259.0
	5th Gd:	257.9	257.5	258.9	265.6	265.6	266.9
626	3rd Gd:	247.5	249.8	250.3	254.4	253.2	253.6
Yates Mill Pond Elementary	4th Gd:	254.0	252.2	254.5	261.1	260.7	260.6
	5th Gd:	257.5	259.0	259.2	262.2	266.1	263.9
628	3rd Gd:	249.6	250.5	252.4	255.3	255.6	255.2
York Elementary	4th Gd:	254.6	255.7	254.8	260.8	262.4	263.5
	5th Gd:	257.9	259.6	260.0	265.4	267.0	267.2
632	3rd Gd:	247.8	246.5	247.6	253.3	251.9	252.4
Zebulon Elementary	4th Gd:	250.0	250.0	251.1	258.0	258.1	257.7
	5th Gd:	255.1	256.0	255.8	260.4	261.4	260.2

Appendix D
Middle School EOG Mean Scale Scores for Three Years

		Reading			Mathematics		
		2003	2004	2005	2003	2004	2005
312	6th Gd:	262.5	264.6	264.6	270.9	272.1	273.7
Apex Middle	7th Gd:	265.6	265.6	266.9	273.3	275.5	266.9
	8th Gd:	268.5	268.1	268.5	277.8	277.7	280.4
356	6th Gd:	260.6	261.3	260.7	267.3	268.0	268.0
Carnage Middle	7th Gd:	263.1	263.2	263.1	271.4	271.1	263.1
	8th Gd:	265.0	265.8	266.2	272.2	274.9	273.7
360	6th Gd:	259.3	257.4	259.0	265.8	264.8	264.6
Carroll Middle	7th Gd:	260.7	261.8	262.0	268.1	270.6	262.0
	8th Gd:	264.7	263.0	266.5	271.4	271.1	274.0
370	6th Gd:	261.6	262.1	261.8	269.3	269.0	268.5
Centennial Middle	7th Gd:	262.2	264.1	263.5	270.6	273.8	263.5
	8th Gd:	265.7	265.4	265.8	272.0	271.7	274.5
388	6th Gd:	260.3	259.9	262.2	266.7	266.7	270.6
Daniels Middle	7th Gd:	263.4	263.3	261.9	270.0	270.6	261.9
	8th Gd:	266.5	265.9	265.5	273.9	273.7	273.6
391	6th Gd:	265.0	265.0	264.1	273.5	274.0	275.2
Davis Drive Middle	7th Gd:	266.6	267.2	267.9	275.7	276.9	267.9
	8th Gd:	269.1	269.9	269.9	279.7	279.5	280.5
394	6th Gd:	261.6	261.0	262.2	268.6	268.2	268.5
Dillard Dr. Middle	7th Gd:	265.6	264.3	263.2	273.8	272.6	263.2
	8th Gd:	268.0	268.7	267.5	277.1	278.4	277.0
399	6th Gd:	261.7	262.4	261.4	269.2	270.0	268.6
Durant Road Middle	7th Gd:	264.9	264.7	265.3	273.5	273.3	265.3
	8th Gd:	267.8	267.7	267.4	277.3	277.1	276.9
400	6th Gd:	258.9	260.3	259.6	265.1	266.3	267.9
Reedy Creek Middle	7th Gd:	262.3	261.1	262.3	271.3	268.8	262.3
	8th Gd:	266.2	265.4	265.2	276.5	274.8	274.2
404	6th Gd:	256.2	257.4	257.5	263.8	263.5	262.9
East Garner Middle	7th Gd:	259.5	258.3	260.1	265.6	264.6	260.1
	8th Gd:	264.2	263.8	262.0	270.9	269.8	268.6
408	6th Gd:	259.1	257.8	258.7	264.1	263.3	265.2
East Millbrook Middle	7th Gd:	260.9	260.7	261.1	266.3	265.4	261.1
	8th Gd:	264.7	264.1	264.0	270.2	269.1	268.5
410	6th Gd:	256.9	257.7	256.5	264.3	264.7	263.2
East Wake Middle	7th Gd:	259.8	259.4	259.7	265.5	266.7	259.7
	8th Gd:	263.3	261.4	262.6	270.1	270.0	269.3

Appendix D
Middle School EOG Mean Scale Scores for Three Years

		Reading			Mathematics		
		2003	2004	2005	2003	2004	2005
424	6th Gd:	259.7	259.5	259.8	266.7	266.9	267.1
Fuquay-Varina Middle	7th Gd:	261.5	261.3	262.0	266.9	267.7	262.0
	8th Gd:	264.6	264.8	264.5	271.6	270.5	271.3
444	6th Gd:		263.9	261.1		274.2	269.6
Heritage Middle	7th Gd:			265.0			265.0
	8th Gd:						
450	6th Gd:		259.8	261.8		268.3	269.6
Holly Ridge Middle	7th Gd:		262.7	263.1		270.4	263.1
	8th Gd:		264.8	266.4		271.5	273.9
471	6th Gd:	262.8	262.9	262.4	269.3	269.5	270.0
Leesville Road Middle	7th Gd:	264.7	265.8	265.0	273.5	273.1	265.0
	8th Gd:	268.0	268.0	269.1	275.4	275.8	277.6
472	6th Gd:	266.3	265.6	265.0	275.0	274.6	274.2
Ligon Middle	7th Gd:	268.7	268.5	266.9	278.2	278.7	266.9
	8th Gd:	269.9	270.4	270.0	281.0	280.1	280.9
484	6th Gd:	265.0	264.2	263.1	271.3	270.7	269.8
Lufkin Rd. Middle	7th Gd:	267.8	267.7	265.0	277.5	277.4	265.0
	8th Gd:	269.5	270.3	267.9	280.1	280.0	278.0
492	6th Gd:	262.2	262.9	263.3	269.3	270.7	271.4
Martin Middle	7th Gd:	265.9	265.1	266.0	276.4	273.3	266.0
	8th Gd:	268.2	268.9	268.3	277.5	279.9	278.0
506	6th Gd:	259.1	259.9	259.3	264.1	264.0	264.4
Moore Square Museum Middle	7th Gd:	261.5	264.2	261.7	266.1	269.1	261.7
	8th Gd:		264.1	266.0		267.3	271.5
512	6th Gd:	256.7	257.0	257.6	264.9	264.0	263.9
North Garner Middle	7th Gd:	260.0	259.4	259.3	269.8	269.7	259.3
	8th Gd:	260.8	262.1	262.1	269.1	269.0	268.4
551	6th Gd:			264.2			274.7
Salem Middle	7th Gd:			267.0			267.0
	8th Gd:			269.0			280.7
592	6th Gd:	259.1	258.3	259.4	265.1	265.7	266.0
Wake Forest-Rolesville Mid.	7th Gd:	261.2	262.0	262.8	266.3	267.7	262.8
	8th Gd:	263.9	263.5	264.3	270.1	270.0	272.9
594	6th Gd:	262.8	262.7	262.6	270.2	270.5	270.0
Wakefield Middle	7th Gd:	266.6	265.8	265.6	274.1	272.9	265.6
	8th Gd:	268.3	268.7	268.7	275.9	277.5	278.0

Appendix D
Middle School EOG Mean Scale Scores for Three Years

		Reading			Mathematics		
		2003	2004	2005	2003	2004	2005
604	6th Gd:	264.2	263.6	262.4	271.4	271.1	271.1
West Cary Middle	7th Gd:	265.6	266.6	264.7	273.5	275.5	264.7
	8th Gd:	268.0	268.3	267.6	275.7	277.4	277.8
<hr/>							
607	6th Gd:	263.4	263.2	264.0	270.7	271.1	272.3
West Lake Middle	7th Gd:	265.7	266.0	266.2	273.0	275.2	266.2
	8th Gd:	269.1	268.8	269.5	278.0	277.1	278.1
<hr/>							
608	6th Gd:	260.7	260.1	260.4	265.5	266.1	266.7
West Millbrook Middle	7th Gd:	263.5	262.1	261.8	270.4	270.4	261.8
	8th Gd:	267.0	266.3	264.9	274.4	274.0	272.8
<hr/>							
636	6th Gd:	258.0	258.6	257.7	265.5	265.2	264.2
Zebulon Middle	7th Gd:	259.6	260.0	260.7	266.0	266.7	260.7
	8th Gd:	264.5	262.2	262.6	270.9	269.9	271.1