

## Dropouts from Wake County Public Schools 2003-04

The Wake County Public School System (WCPSS) high school (grades 9-12) dropout rate edged up to 3.4% (N=1130) in 2003-04 as compared to 2.8%\* in 2002-03. Wake's rate remained below the statewide high school rate, which increased to 4.9%. When compared to the largest public school systems in North Carolina, Wake had the second lowest high school dropout rate, following Guilford's 3.1%. Mecklenburg (4.5%), Forsyth (5.2%), and Durham (5.9%) maintained higher rates.

The WCPSS rate for grades 7-12 also edged up to 2.4% (N=1188). Statewide, the 7-12 rate rose to 3.2%. While the rate for White students declined from 1.5% to 1.3%, Black students' dropout rate decreased from 4.0% to 2.2%. The rate for all other students decreased from 3.1% to 3.0%.

At the high school level, while White students' dropout rates over the previous five years (3.0%, 2.7%, 2.2%, 2.0%, 2.2%) have declined or remained relatively flat, Latino students' rates have been less stable and do not show a consistent pattern (8.7%, 7.2%, 7.7%, 6.5%, 9.0%). Black students' rates have shown a generally downward trend (7.0%, 6.1%, 6.3%, 3.9%\*, 5.4%) over time. Asian (1.6%) and Multiracial (3.4%) students' rates decreased over the previous year's rates. It should be noted that the American Indian dropout rate has been blanked out because the number of dropouts was fewer than five.

The most dropouts from high schools occurred in grade 9 (n=444), and more than 90% (n=403) were age 16 or older at the time of dropping out. Students in 10<sup>th</sup> grade comprised 285 of the high school dropouts; 220 were in 11<sup>th</sup> grade; and 181 were in 12<sup>th</sup> grade. White students tended to drop out in more even proportions across grades 9-12 than did any other racial category. More than a quarter of all the high school dropouts were 19 years of age or older at the time of dropping out.

Approximately 73% (n=827) of the high school dropouts were not in special programs of any kind. However, 13.1% were Learning Disabled, and 2.6% were Academically Gifted. Twenty-one percent of the high school dropout cohort was on free or reduced-priced lunch.

**Author**  
Kevin Gilleland

**Contributing Staff**  
Chuck Dulaney



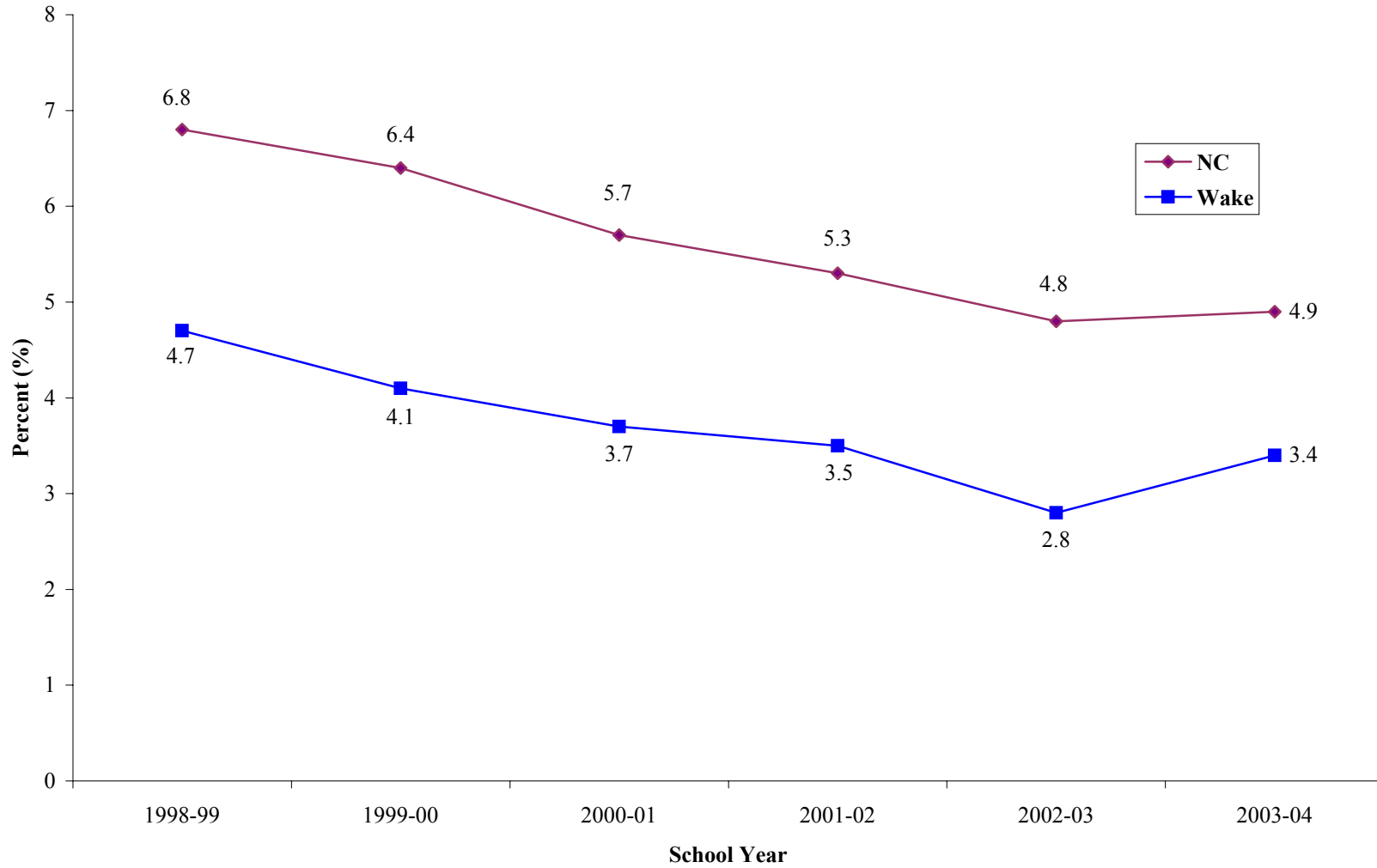
**WAKE COUNTY**  
PUBLIC SCHOOL SYSTEM

The reasons most often given for dropping out related to attendance issues (n=588), followed by moving (n=210), attendance at a community college (n=144), not returning after a long-term suspension (n=74), choice of work over school (n=47), and academic problems (n=40). Of the entire 9-12 dropout group, more males (59.7%) than females (40.3%) dropped out, as did more Black students (43.1%) than did White students (37.9%).

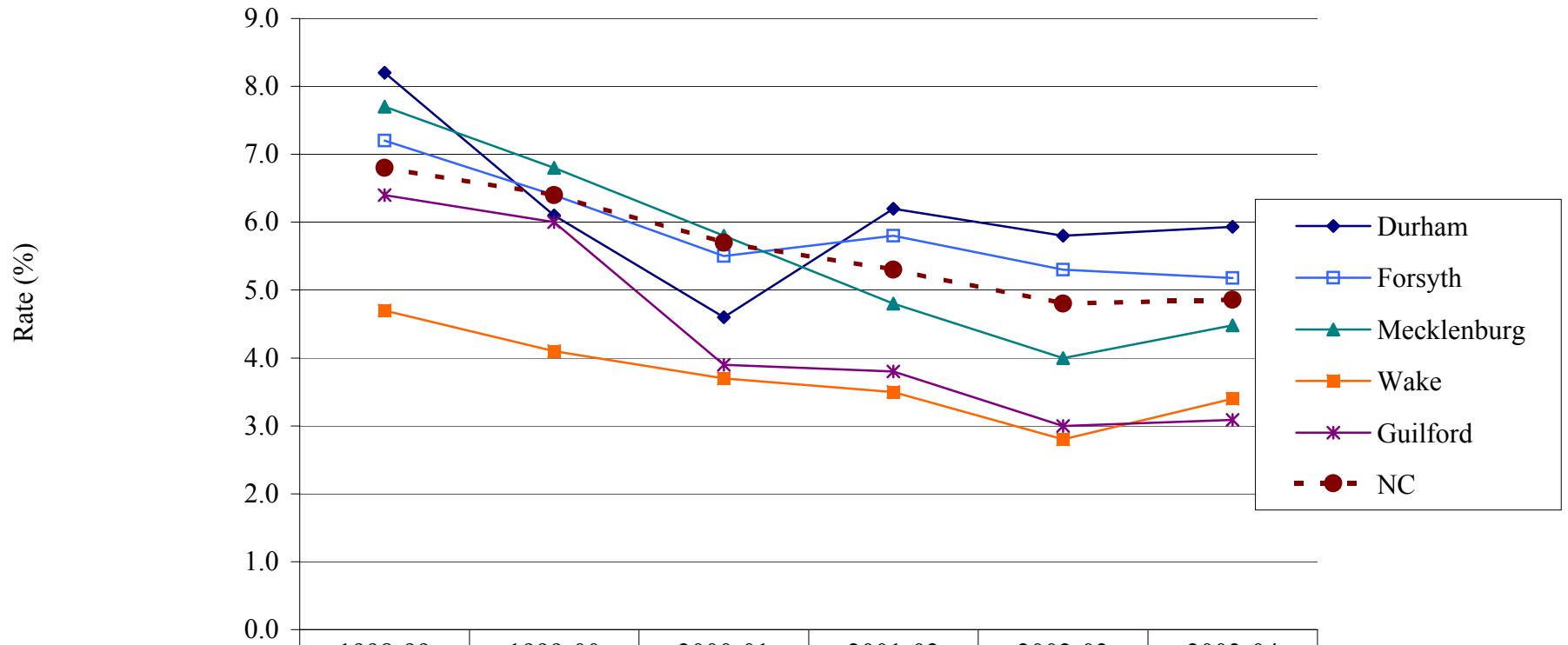
\*After submission of the 2002-03 annual dropout data to the Department of Public Instruction, problems were identified in the dropout reporting from Phillips High School, a WCPSS alternative school. This report includes revised figures for 2002-03. The possibility remains that other, unidentified reporting errors resulted in an unexpectedly low 2002-03 dropout rate.

Any questions concerning dropouts may be directed to Kevin Gilleland (919-850-1902) or Chuck Dulaney (919-850-1903) in the Department of Evaluation and Research at Wake County Public Schools.

**NC and WCPSS Six-Year Dropout Rates  
Grades 9-12  
1999-2004**

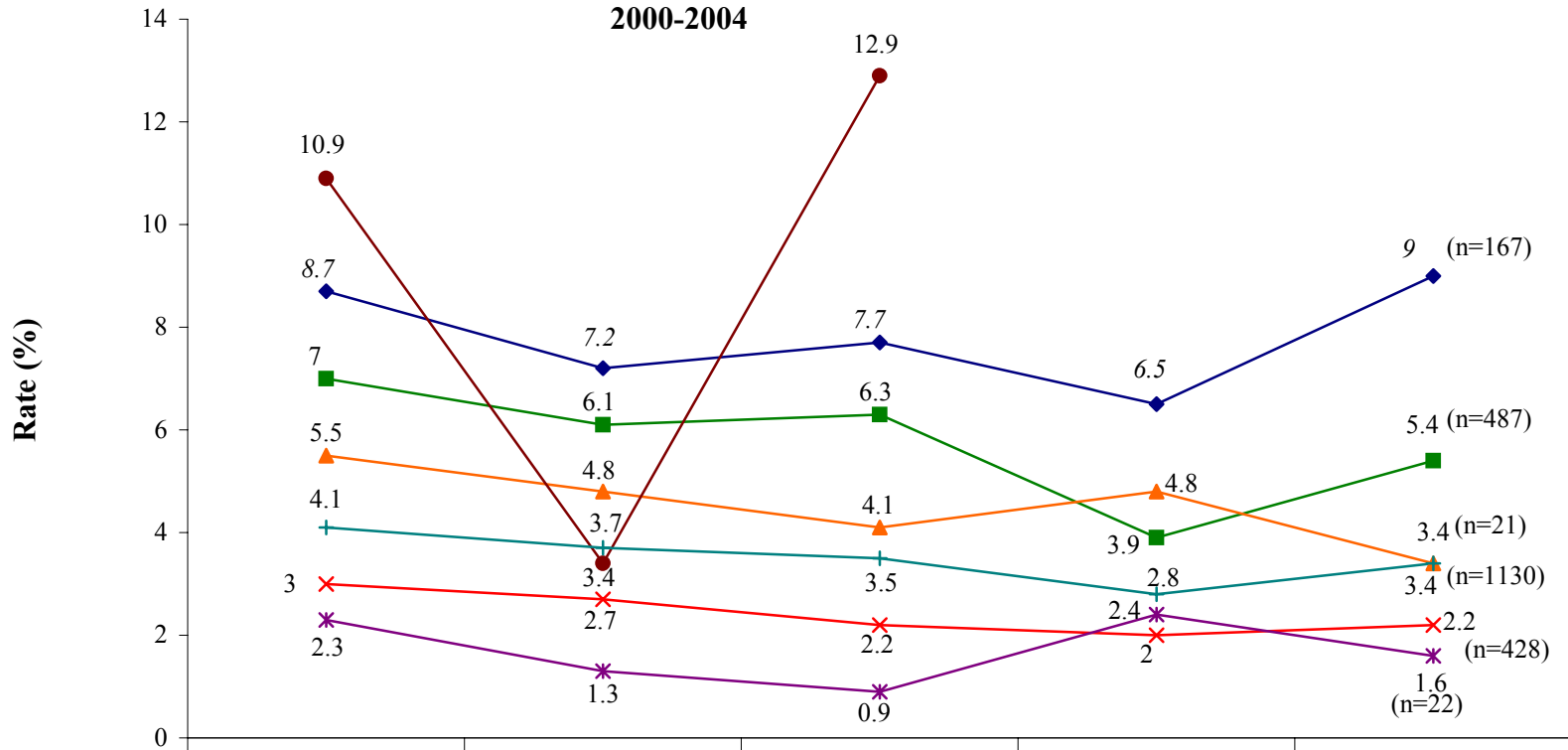


**Grades 9-12 Dropout Rates for Selected Districts and NC**



	1998-99	1999-00	2000-01	2001-02	2002-03	2003-04
Durham	8.2	6.1	4.6	6.2	5.8	5.93
Forsyth	7.2	6.4	5.5	5.8	5.3	5.18
Mecklenburg	7.7	6.8	5.8	4.8	4	4.48
Wake	4.7	4.1	3.7	3.5	2.8	3.4
Guilford	6.4	6	3.9	3.8	3	3.09
NC	6.8	6.4	5.7	5.3	4.8	4.86

**Dropout Rates by Ethnic Group  
Grades 9-12  
2000-2004**



	1999-00	2000-01	2001-02	2002-03	2003-04
◆ Hispanic/Latino	8.7	7.2	7.7	6.5	9
■ African American/Black	7	6.1	6.3	3.9	5.4
▲ Multi-racial	5.5	4.8	4.1	4.8	3.4
× White	3	2.7	2.2	2	2.2
✱ Asian	2.3	1.3	0.9	2.4	1.6
● Native American	10.9	3.4	12.9		
+ WCPSS	4.1	3.7	3.5	2.8	3.4

\*The 2002-03 and 2003-04 Native American values are blank because 5 or fewer students dropped out.

**WCPSS High School Dropout Rate (%)**  
**By School**  
**1997-2004**

<b>High School</b>	<b>1996-97</b>	<b>1997-98</b>	<b>1998-99</b>	<b>1999-00</b>	<b>2000-01</b>	<b>2001-02</b>	<b>2002-03</b>	<b>2003-04</b>
<b>Apex</b>	3.3	4.0	4.1	2.5	2.7	2.6	2.3	3.0
<b>Athens</b>	5.2	4.8	2.8	4.2	2.8	2.6	3.0	3.8
<b>Longview</b>	17.4	29.2	21.1	23.8	13.3	16.5	8.2	7.1
<b>Broughton</b>	2.6	4.8	5.1	3.7	2.8	4.5	3.1	2.9
<b>Cary</b>	3.7	1.8	4.6	3.5	5.2	3.1	3.2	3.7
<b>East Wake</b>	6.8	6.5	6.0	7.1	6.5	6.3	4.6	5.6
<b>Enloe</b>	1.8	2.2	3.0	1.5	2.7	1.9	1.5	2.0
<b>Fuquay-Varina</b>	4.4	5.5	5.2	5.3	5.6	4.8	4.2	5.1
<b>Garner</b>	5.5	4.8	4.8	4.3	3.6	6.3	4.3	5.6
<b>Green Hope</b>					1.3	0.0	0.7	2.1
<b>Leesville</b>	2.1	1.8	2.5	2.7	2.0	2.3	1.1	1.0
<b>Middle Creek</b>							3.0	3.0
<b>Millbrook</b>	3.8	5.8	5.5	5.4	2.5	4.1	4.4	4.3
<b>Phillips</b>	36.2	27.9	35.7	45.1	29.3	24.0	19.4	26.3
<b>Sanderson</b>	3.2	4.1	3.4	3.9	2.4	3.1	1.5	3.7
<b>SE Raleigh</b>		2.2	2.4	2.2	3.5	2.4	0.7	1.8
<b>Wake Forest-Rolesville</b>	4.2	3.0	7.2	6.4	8.4	2.6	3.0	4.4
<b>Wakefield</b>					1.3	1.7	1.4	1.9
<b>WCPSS</b>	<b>4.3</b>	<b>4.2</b>	<b>4.7</b>	<b>4.1</b>	<b>3.7</b>	<b>3.5</b>	<b>2.8*</b>	<b>3.4</b>

\*2002-03 dropout rate has been revised to reflect additional dropouts discovered by Phillips High after the official dropout data had been submitted to DPI.

**High School Dropouts  
By School  
2003-04**

<b>School</b>				
<b>School</b>	<b>Frequency</b>	<b>Percent</b>	<b>Cumulative Frequency</b>	<b>Cumulative Percent</b>
<b>Apex High</b>	65	5.75	65	5.75
<b>Athens Drive High</b>	69	6.11	134	11.86
<b>Longview School</b>	7	0.62	141	12.48
<b>Broughton High</b>	63	5.58	204	18.05
<b>Cary High</b>	88	7.79	292	25.84
<b>East Wake High</b>	107	9.47	399	35.31
<b>Enloe High</b>	47	4.16	446	39.47
<b>Fuquay-Varina High</b>	83	7.35	529	46.81
<b>Garner High</b>	111	9.82	640	56.64
<b>Green Hope High</b>	45	3.98	685	60.62
<b>Leesville High</b>	22	1.95	707	62.57
<b>Middle Creek High</b>	38	3.36	745	65.93
<b>Millbrook High</b>	92	8.14	837	74.07
<b>Phillips High</b>	73	6.46	910	80.53
<b>Sanderson High</b>	70	6.19	980	86.73
<b>S.E. Raleigh High</b>	39	3.45	1019	90.18
<b>Wake Forest-Rolesville High</b>	75	6.64	1094	96.81
<b>Wakefield High</b>	36	3.19	1130	100.00

***High School Dropouts  
By Grade  
2003-04***

<b>Grade</b>				
<b>Dropout_Grade</b>	<b>Frequency</b>	<b>Percent</b>	<b>Cumulative Frequency</b>	<b>Cumulative Percent</b>
<b>09</b>	444	39.29	444	39.29
<b>10</b>	285	25.22	729	64.51
<b>11</b>	220	19.47	949	83.98
<b>12</b>	181	16.02	1130	100.00



**High School Dropouts  
By School by Grade  
2003-04**

Frequency Percent Row Pct Col Pct	Table of School by Dropout_Grade					
	School(School)	Dropout_Grade(Grade)				Total
		9th	10th	11th	12th	
	<b>Apex High</b>	17 1.50 26.15 3.83	11 0.97 16.92 3.86	14 1.24 21.54 6.36	23 2.04 35.38 12.71	65 5.75
	<b>Athens Drive High</b>	37 3.27 53.62 8.33	14 1.24 20.29 4.91	7 0.62 10.14 3.18	11 0.97 15.94 6.08	69 6.11
	<b>Longview School</b>	4 0.35 57.14 0.90	1 0.09 14.29 0.35	2 0.18 28.57 0.91	0 0.00 0.00 0.00	7 0.62
	<b>Broughton High</b>	25 2.21 39.68 5.63	17 1.50 26.98 5.96	11 0.97 17.46 5.00	10 0.88 15.87 5.52	63 5.58
	<b>Cary High</b>	30 2.65 34.09 6.76	24 2.12 27.27 8.42	23 2.04 26.14 10.45	11 0.97 12.50 6.08	88 7.79
	<b>East Wake High</b>	47 4.16 43.93 10.59	25 2.21 23.36 8.77	23 2.04 21.50 10.45	12 1.06 11.21 6.63	107 9.47
	<b>Enloe High</b>	20 1.77 42.55 4.50	13 1.15 27.66 4.56	7 0.62 14.89 3.18	7 0.62 14.89 3.87	47 4.16
	<b>Fuquay-Varina High</b>	22 1.95 26.51 4.95	26 2.30 31.33 9.12	21 1.86 25.30 9.55	14 1.24 16.87 7.73	83 7.35
	<b>Garner High</b>	42 3.72 37.84 9.46	29 2.57 26.13 10.18	22 1.95 19.82 10.00	18 1.59 16.22 9.94	111 9.82
	<b>Green Hope High</b>	15 1.33 33.33 3.38	15 1.33 33.33 5.26	10 0.88 22.22 4.55	5 0.44 11.11 2.76	45 3.98
	<b>Leesville High</b>	11 0.97 50.00 2.48	6 0.53 27.27 2.11	5 0.44 22.73 2.27	0 0.00 0.00 0.00	22 1.95
	<b>Middle Creek High</b>	16 1.42 42.11 3.60	15 1.33 39.47 5.26	7 0.62 18.42 3.18	0 0.00 0.00 0.00	38 3.36

**High School Dropouts  
By School by Grade  
2003-04**

Frequency Percent Row Pct Col Pct	Table of School by Dropout_Grade					
	School(School)	Dropout_Grade(Grade)				Total
		9th	10th	11th	12th	
	<b>Millbrook High</b>	38 3.36 41.30 8.56	30 2.65 32.61 10.53	11 0.97 11.96 5.00	13 1.15 14.13 7.18	92 8.14
	<b>Phillips High</b>	30 2.65 41.10 6.76	10 0.88 13.70 3.51	25 2.21 34.25 11.36	8 0.71 10.96 4.42	73 6.46
	<b>Sanderson High</b>	29 2.57 41.43 6.53	13 1.15 18.57 4.56	13 1.15 18.57 5.91	15 1.33 21.43 8.29	70 6.19
	<b>S.E. Raleigh High</b>	13 1.15 33.33 2.93	7 0.62 17.95 2.46	4 0.35 10.26 1.82	15 1.33 38.46 8.29	39 3.45
	<b>Wake Forest-Rolesville High</b>	37 3.27 49.33 8.33	18 1.59 24.00 6.32	11 0.97 14.67 5.00	9 0.80 12.00 4.97	75 6.64
	<b>Wakefield High</b>	11 0.97 30.56 2.48	11 0.97 30.56 3.86	4 0.35 11.11 1.82	10 0.88 27.78 5.52	36 3.19
	<b>Total</b>	444 39.29	285 25.22	220 19.47	181 16.02	1130 100.00

***High School Dropouts  
By Reason for Dropping Out  
2003-04***

<b>Reason for Dropping Out</b>				
<b>Reason</b>	<b>Frequency</b>	<b>Percent</b>	<b>Cumulative Frequency</b>	<b>Cumulative Percent</b>
<b>Academic Problems</b>	40	3.54	40	3.54
<b>Attendance Family</b>	2	0.18	42	3.72
<b>Attendance Personal</b>	21	1.86	63	5.58
<b>Attendance School</b>	76	6.73	139	12.30
<b>Attendance</b>	479	42.39	618	54.69
<b>Attendance Work</b>	10	0.88	628	55.58
<b>Need to Care for Children</b>	2	0.18	630	55.75
<b>Commun. Coll. Dropout from Approved Program</b>	144	12.74	774	68.50
<b>Discipline Problems</b>	7	0.62	781	69.12
<b>Health Problems</b>	3	0.27	784	69.38
<b>Unstable Home Environment</b>	2	0.18	786	69.56
<b>Incarcerated in Adult Facility</b>	5	0.44	791	70.00
<b>Long-Term Suspension</b>	74	6.55	865	76.55
<b>Move-- School Status Unknown</b>	210	18.58	1075	95.13
<b>Pregnancy</b>	1	0.09	1076	95.22
<b>Runaway</b>	7	0.62	1083	95.84
<b>Choice of Work Over School</b>	47	4.16	1130	100.00

***High School Dropouts  
By Age  
2003-04***

<b>Age</b>				
<b>Dropout_Age</b>	<b>Frequency</b>	<b>Percent</b>	<b>Cumulative Frequency</b>	<b>Cumulative Percent</b>
<b>14</b>	1	0.09	1	0.09
<b>15</b>	40	3.54	41	3.63
<b>16</b>	139	12.30	180	15.93
<b>17</b>	268	23.72	448	39.65
<b>18</b>	389	34.42	837	74.07
<b>19</b>	222	19.65	1059	93.72
<b>20</b>	61	5.40	1120	99.12
<b>21</b>	10	0.88	1130	100.00

**High School Dropouts  
By Age by Grade  
2003-04**

Frequency Percent Row Pct Col Pct	Table of Dropout_Age by Dropout_Grade					
	Dropout_Age(Age)	Dropout_Grade(Grade)				Total
		09	10	11	12	
<b>14</b>	1 0.09 100.00 0.23	0 0.00 0.00 0.00	0 0.00 0.00 0.00	0 0.00 0.00 0.00	1 0.09	
<b>15</b>	40 3.54 100.00 9.01	0 0.00 0.00 0.00	0 0.00 0.00 0.00	0 0.00 0.00 0.00	40 3.54	
<b>16</b>	99 8.76 71.22 22.30	37 3.27 26.62 12.98	3 0.27 2.16 1.36	0 0.00 0.00 0.00	139 12.30	
<b>17</b>	155 13.72 57.84 34.91	77 6.81 28.73 27.02	34 3.01 12.69 15.45	2 0.18 0.75 1.10	268 23.72	
<b>18</b>	112 9.91 28.79 25.23	118 10.44 30.33 41.40	94 8.32 24.16 42.73	65 5.75 16.71 35.91	389 34.42	
<b>19</b>	30 2.65 13.51 6.76	43 3.81 19.37 15.09	66 5.84 29.73 30.00	83 7.35 37.39 45.86	222 19.65	
<b>20</b>	6 0.53 9.84 1.35	9 0.80 14.75 3.16	21 1.86 34.43 9.55	25 2.21 40.98 13.81	61 5.40	
<b>21</b>	1 0.09 10.00 0.23	1 0.09 10.00 0.35	2 0.18 20.00 0.91	6 0.53 60.00 3.31	10 0.88	
<b>Total</b>	444 39.29	285 25.22	220 19.47	181 16.02	1130 100.00	

***High School Dropouts  
By Race  
2003-04***

<b>Race</b>				
<b>Race</b>	<b>Frequency</b>	<b>Percent</b>	<b>Cumulative Frequency</b>	<b>Cumulative Percent</b>
<b>American Indian</b>	5	0.44	5	0.44
<b>Asian</b>	22	1.95	27	2.39
<b>Black/African American</b>	487	43.10	514	45.49
<b>Hispanic/Latino</b>	167	14.78	681	60.27
<b>Multi-racial</b>	21	1.86	702	62.12
<b>White</b>	428	37.88	1130	100.00

**High School Dropouts  
By Grade by Race  
2003-04**

**Frequency  
Percent  
Row Pct  
Col Pct**

Table of Dropout_Grade by Race							
Dropout_Grade(Grade)	Race(Race)						Total
	American Indian	Asian	Black	Hispanic/Latino	Multi-racial	White	
<b>9th</b>	4 0.35 0.90 80.00	6 0.53 1.35 27.27	214 18.94 48.20 43.94	92 8.14 20.72 55.09	8 0.71 1.80 38.10	120 10.62 27.03 28.04	444 39.29
<b>10th</b>	1 0.09 0.35 20.00	4 0.35 1.40 18.18	122 10.80 42.81 25.05	46 4.07 16.14 27.54	9 0.80 3.16 42.86	103 9.12 36.14 24.07	285 25.22
<b>11th</b>	0 0.00 0.00 0.00	9 0.80 4.09 40.91	89 7.88 40.45 18.28	13 1.15 5.91 7.78	3 0.27 1.36 14.29	106 9.38 48.18 24.77	220 19.47
<b>12th</b>	0 0.00 0.00 0.00	3 0.27 1.66 13.64	62 5.49 34.25 12.73	16 1.42 8.84 9.58	1 0.09 0.55 4.76	99 8.76 54.70 23.13	181 16.02
<b>Total</b>	5 0.44	22 1.95	487 43.10	167 14.78	21 1.86	428 37.88	1130 100.00

***High School Dropouts  
By Gender  
2003-04***

<b>Gender</b>				
<b>Gender</b>	<b>Frequency</b>	<b>Percent</b>	<b>Cumulative Frequency</b>	<b>Cumulative Percent</b>
<b>Female</b>	455	40.27	455	40.27
<b>Male</b>	675	59.73	1130	100.00



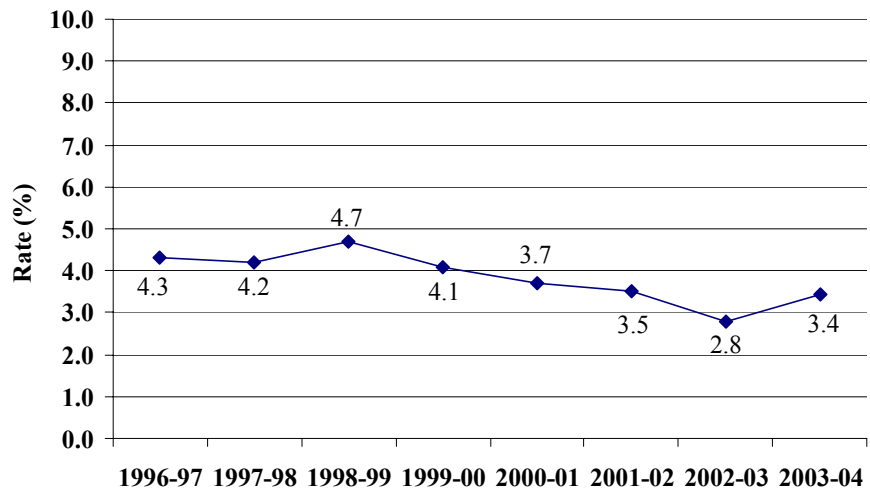
*High School Dropouts  
By Lunch  
2003-04*

<b>Lunch</b>	<b>Frequency</b>	<b>Percent</b>	<b>Cumulative Frequency</b>	<b>Cumulative Percent</b>
<b>Free</b>	38	3.36	38	3.36
<b>Reduced</b>	3	0.27	41	3.63
<b>Not Free or Reduced</b>	1089	96.37	1130	100.00

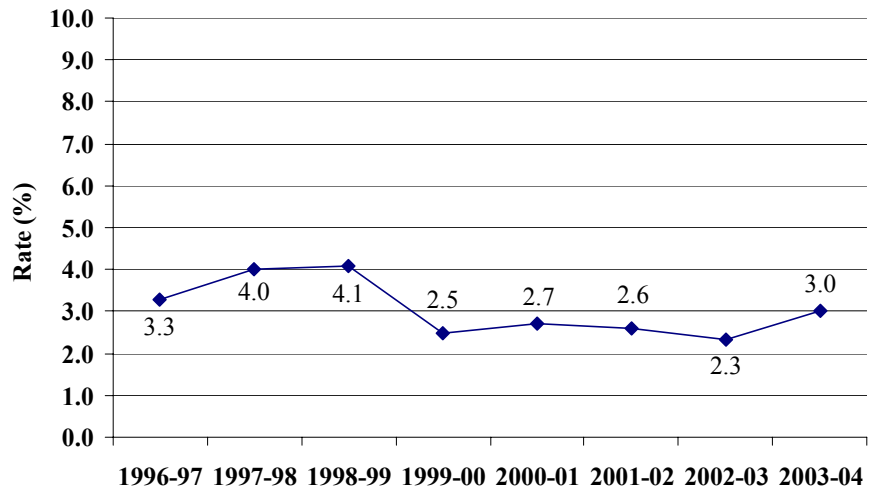
***High School Dropouts  
By Special Programs Status  
2003-04***

<b>SpecEd</b>	<b>Frequency</b>	<b>Percent</b>	<b>Cumulative Frequency</b>	<b>Cumulative Percent</b>
<b>Not Special Education</b>	827	73.19	827	73.19
<b>Trainable Mentally Disabled (TMD)</b>	1	0.09	828	73.27
<b>Learning Disabled (LD)</b>	149	13.19	977	86.46
<b>Other Health Impaired (OHI)</b>	53	4.69	1030	91.15
<b>Hearing Impaired (HI)</b>	4	0.35	1034	91.50
<b>Speech/Language Impaired (SI/LI)</b>	3	0.27	1037	91.77
<b>Behaviorally/Emotionally Disabled (BED)</b>	47	4.16	1084	95.93
<b>Educable Mentally Disabled (EMD)</b>	15	1.33	1099	97.26
<b>Visually Impaired (VI)</b>	1	0.09	1100	97.35
<b>Orthopedically Impaired (OI)</b>	2	0.18	1102	97.52
<b>Academically Gifted (AG)</b>	28	2.48	1130	100.00

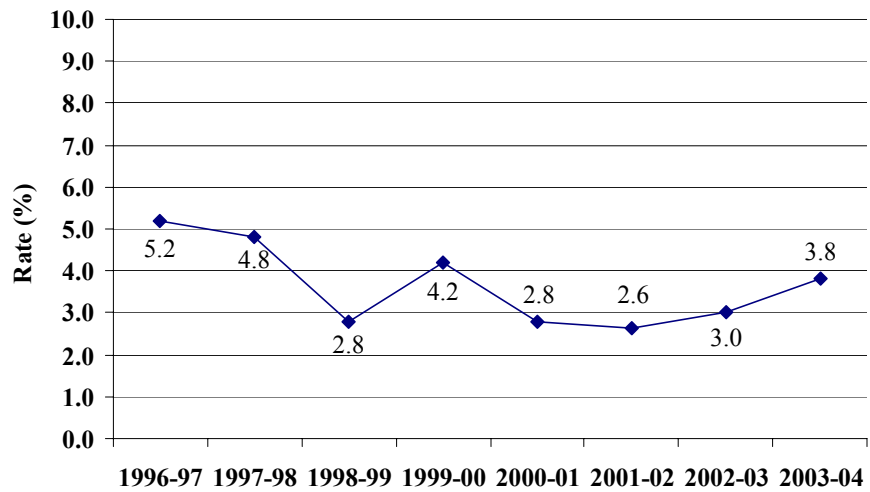
### Eight-Year Dropout Trend Wake County High Schools



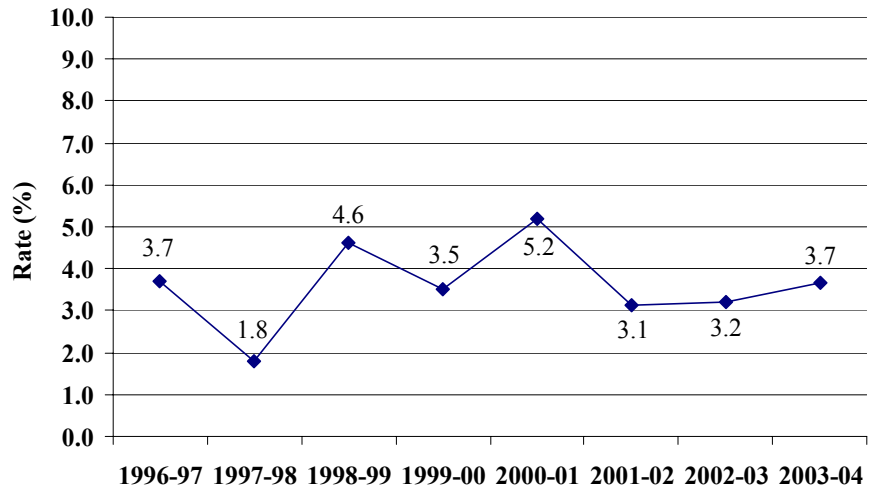
### Eight-Year Dropout Trend Apex High School



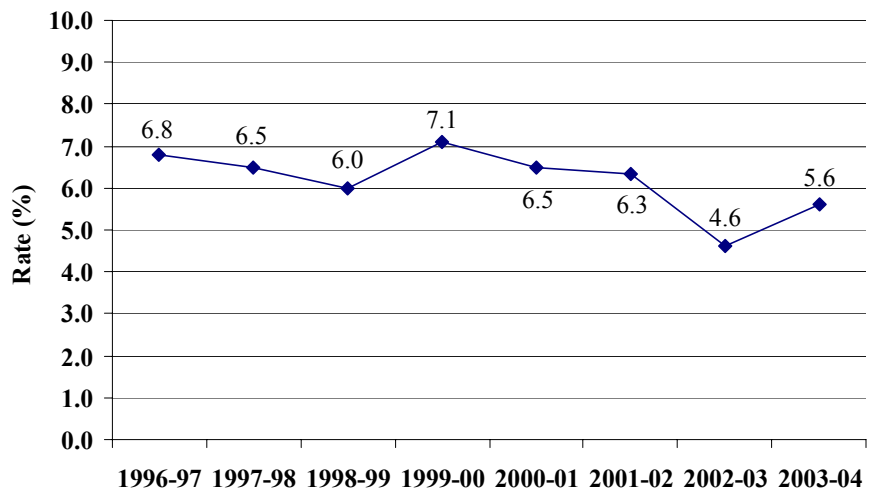
### Eight-Year Dropout Trend Athens Drive High School



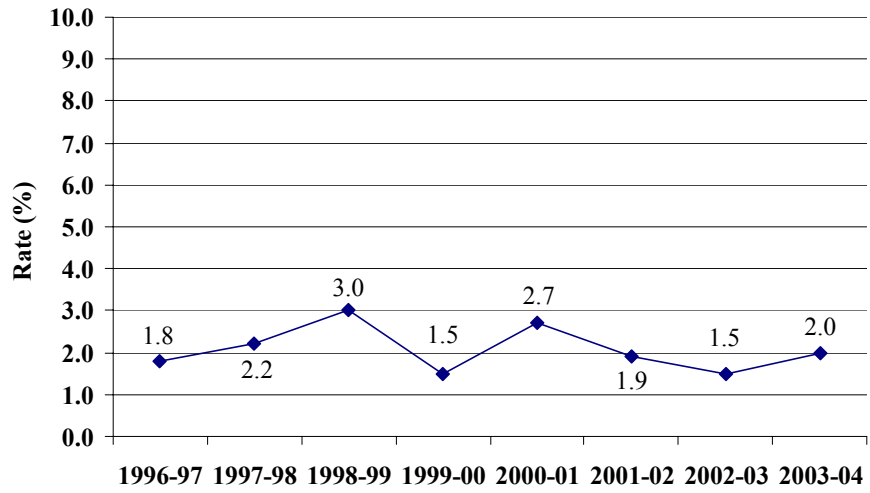
### Eight-Year Dropout Trend Cary High School



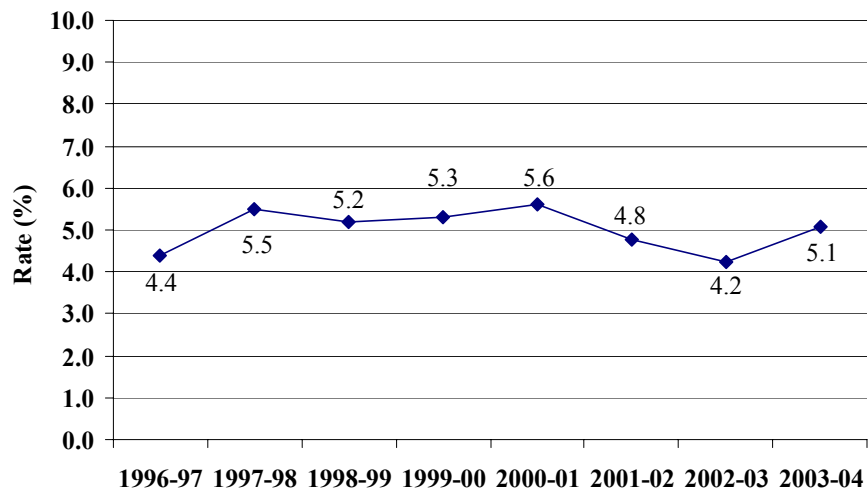
### Eight-Year Dropout Trend East Wake High School

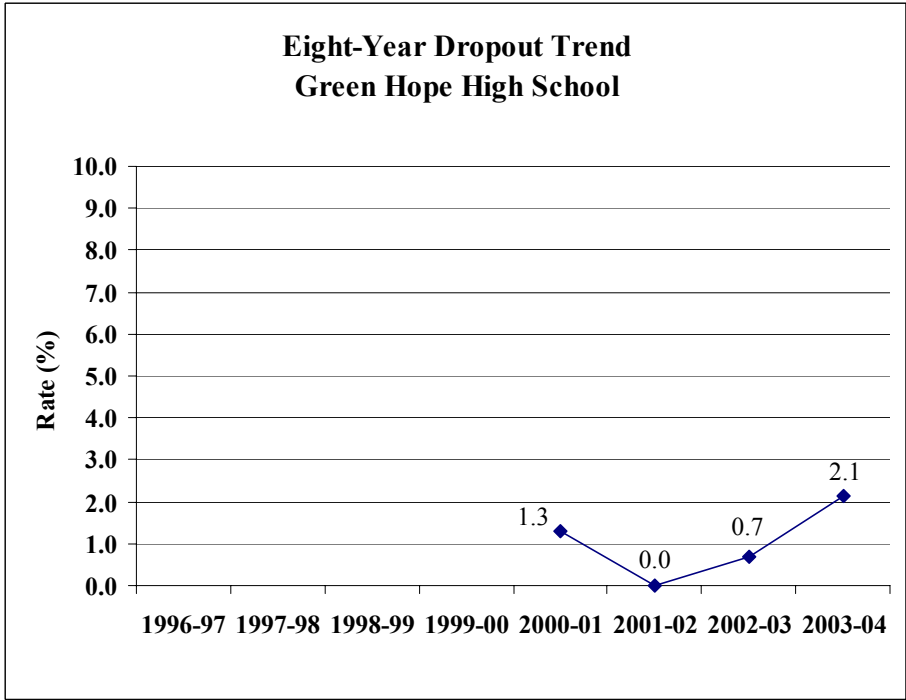
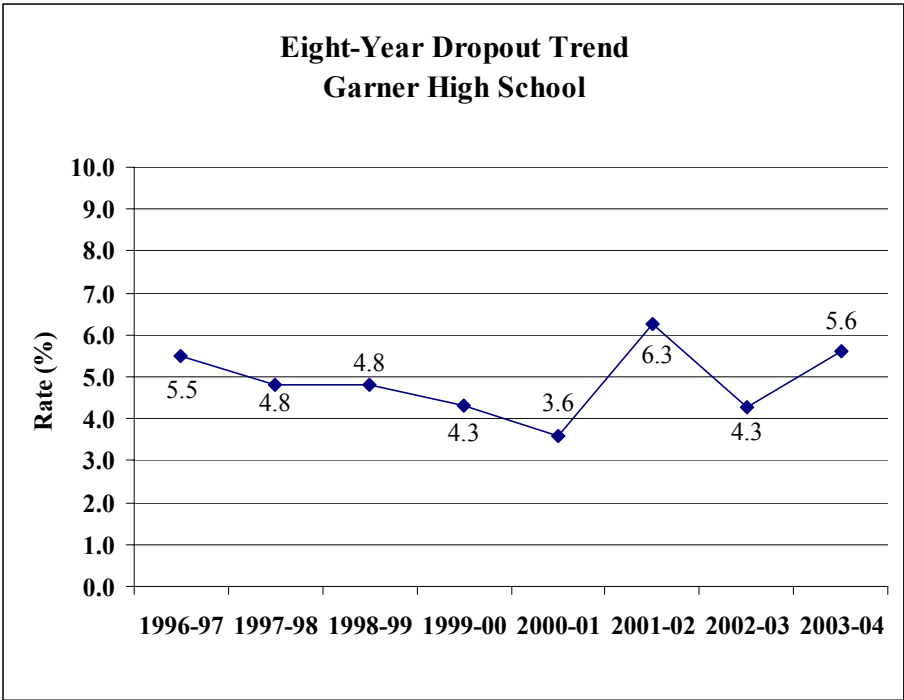


### Eight-Year Dropout Trend Enloe High School

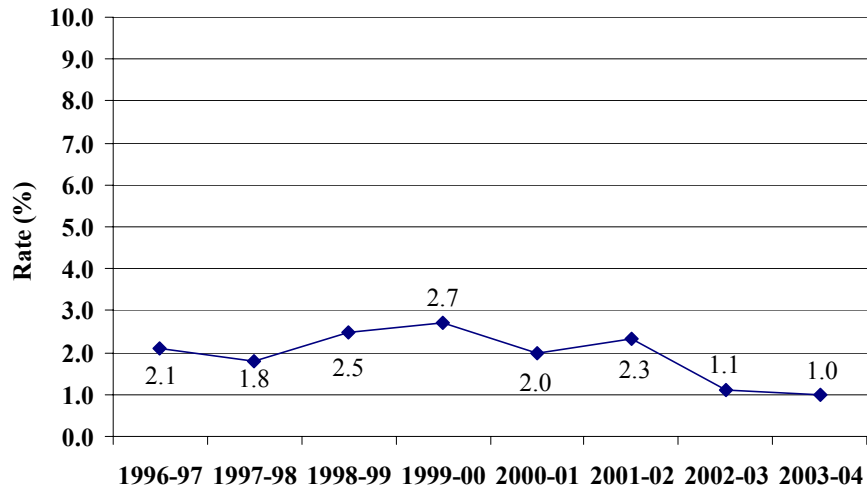


### Eight-Year Dropout Trend Fuquay-Varina High School

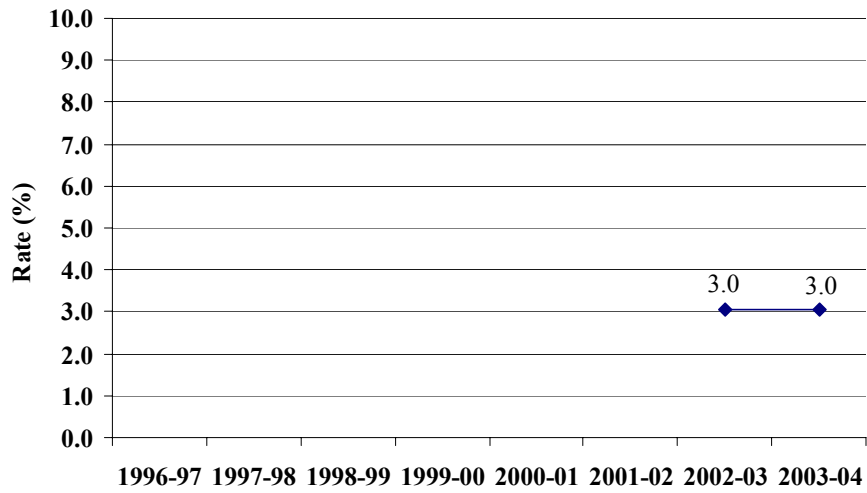




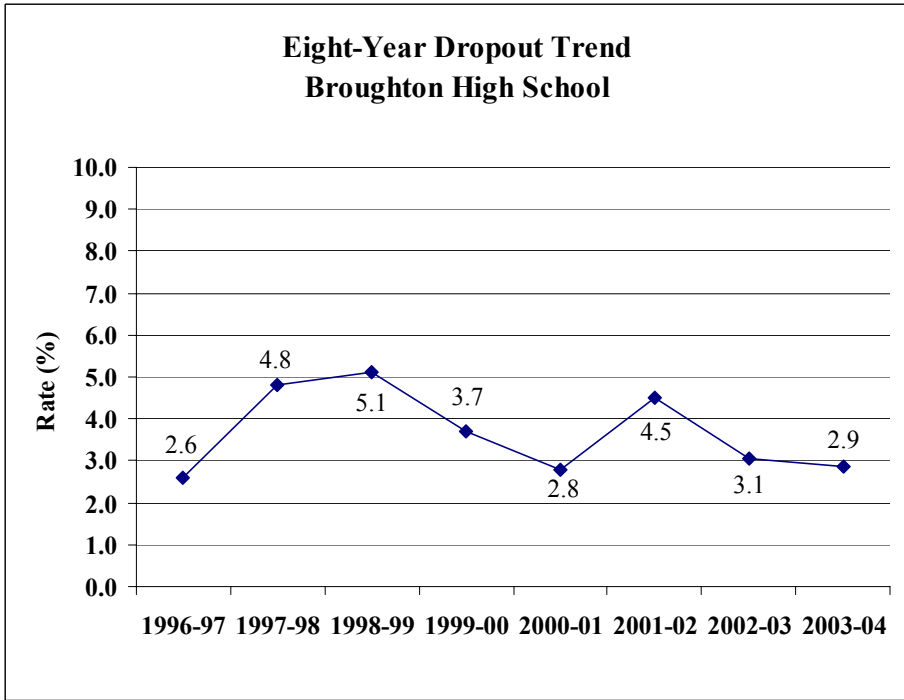
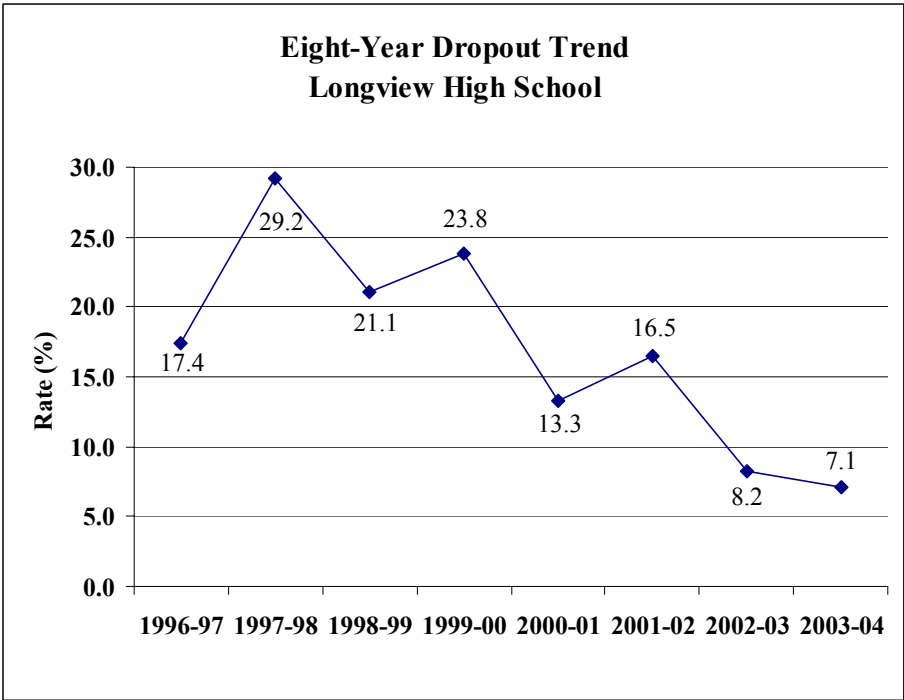
**Eight-Year Dropout Trend  
Leesville High School**



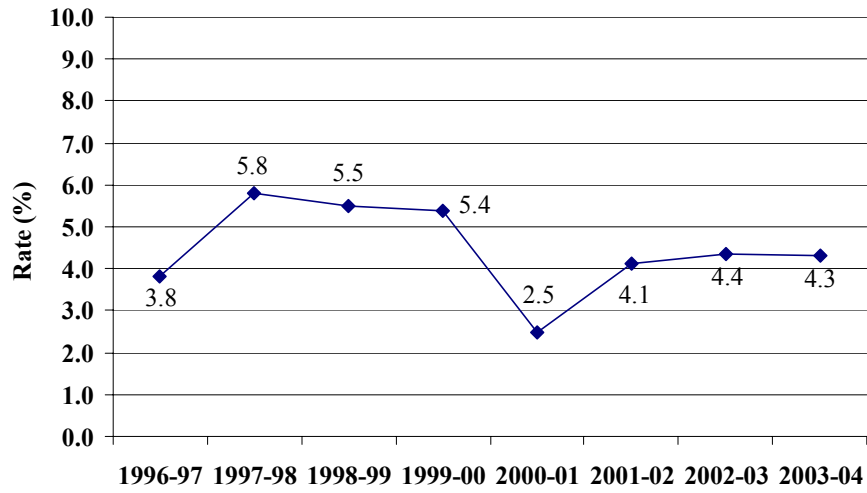
**Eight-Year Dropout Trend  
Middle Creek High School**



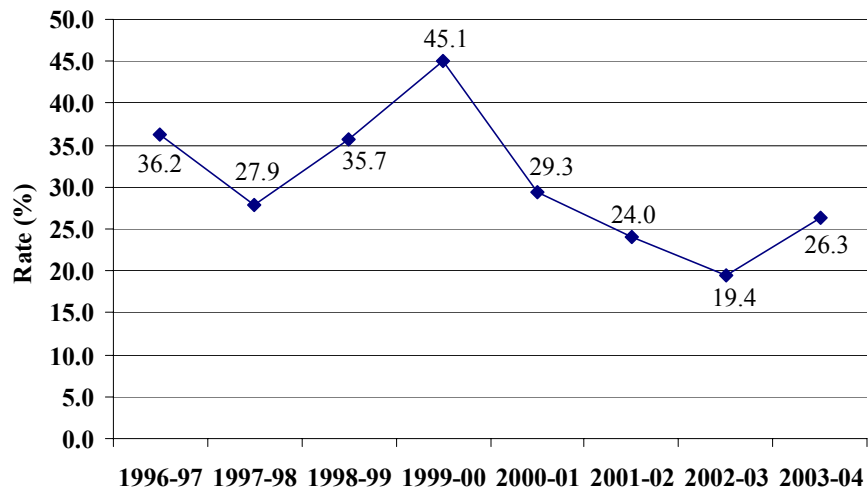




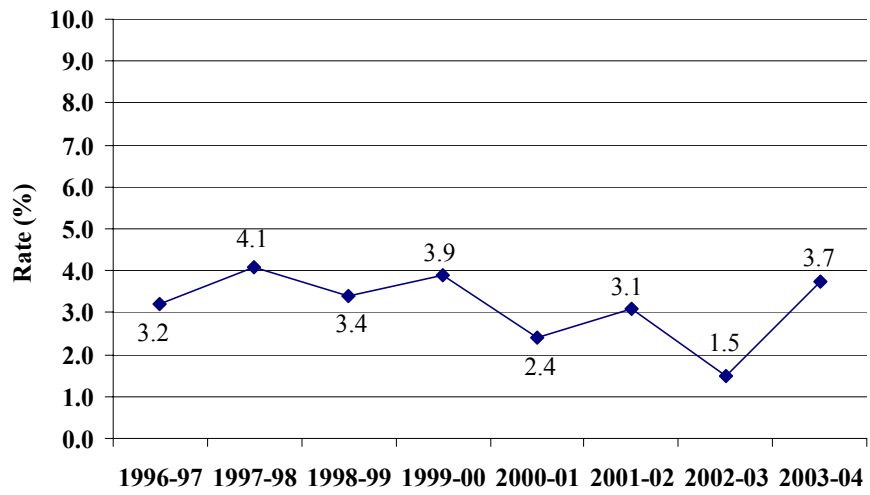
### Eight-Year Dropout Trend Millbrook High School



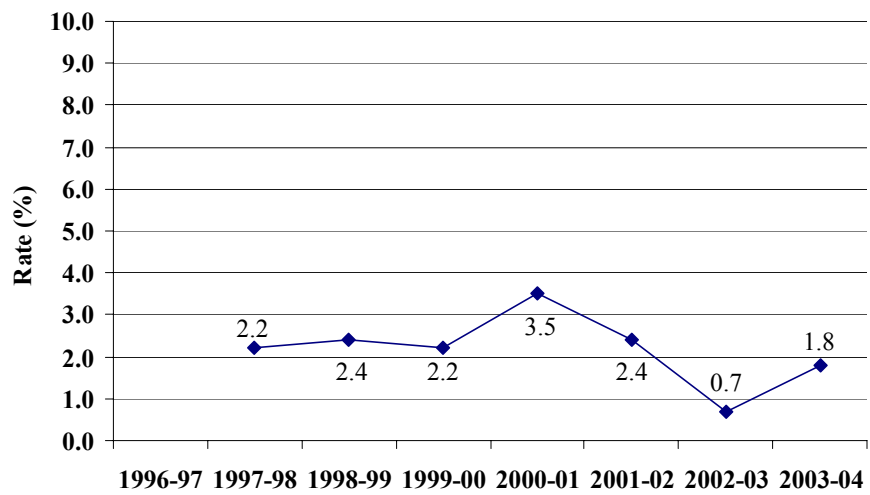
### Eight-Year Dropout Trend Phillips High School



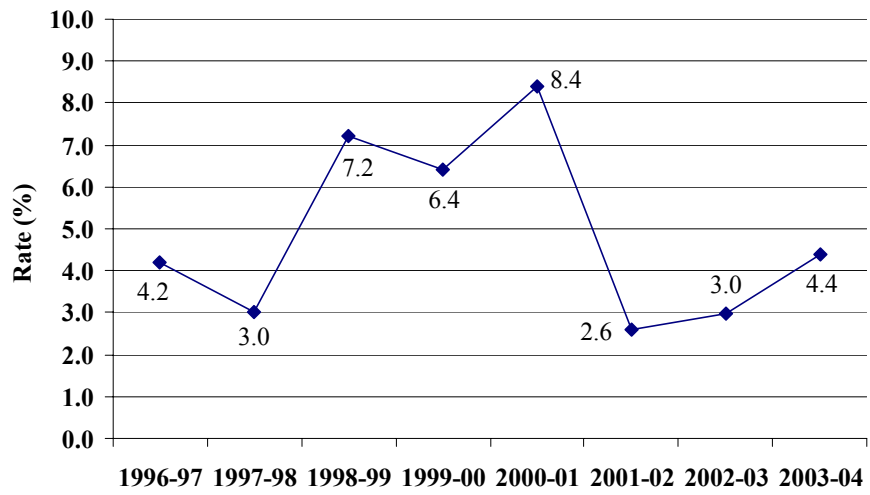
### Eight-Year Dropout Trend Sanderson High School



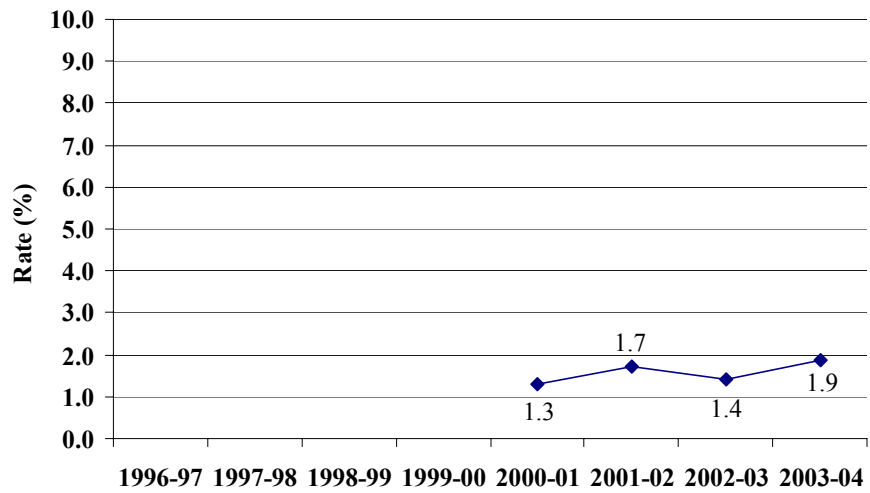
### Eight-Year Dropout Trend S.E. Raleigh High School



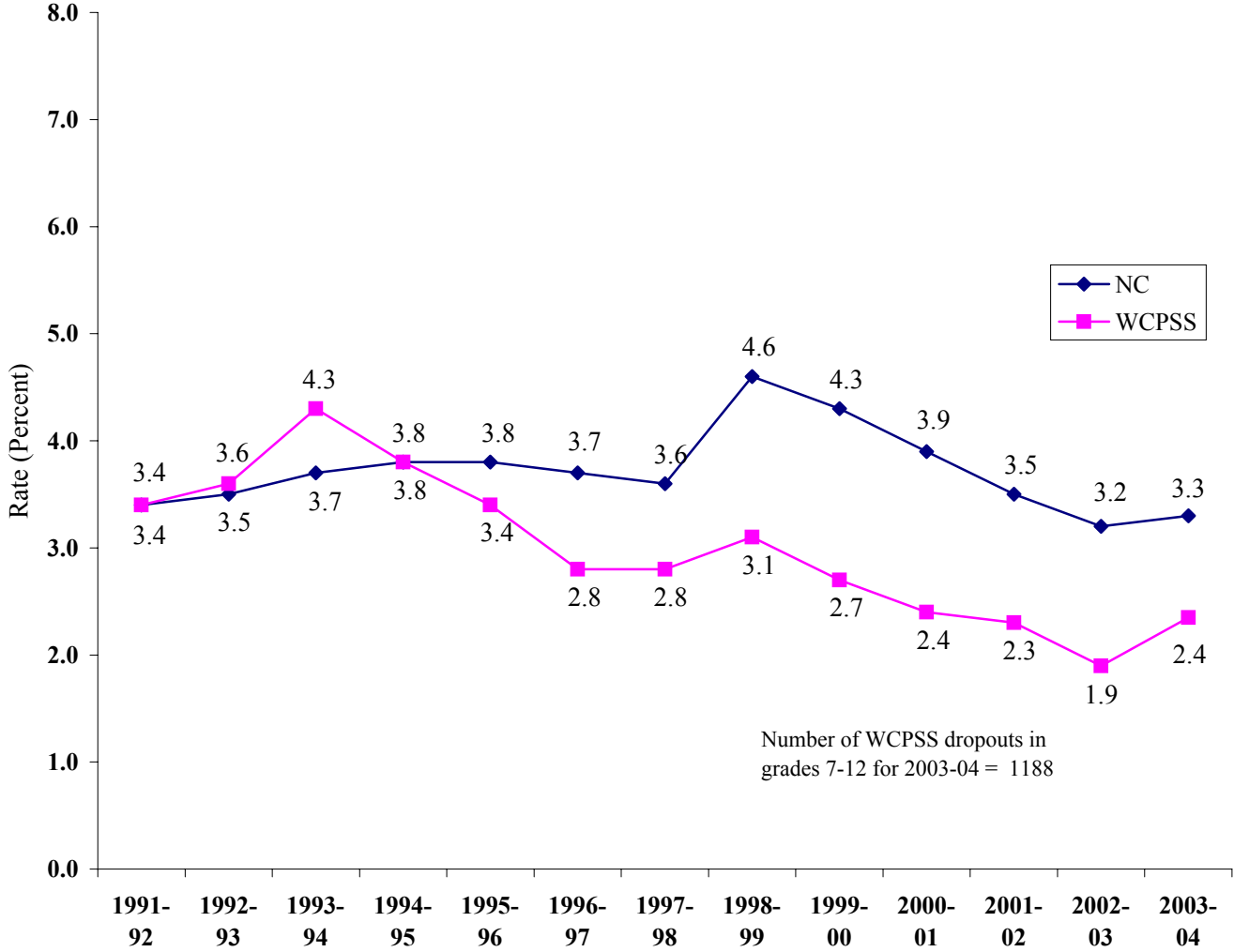
### Eight-Year Dropout Trend Wake Forest-Rolesville High School



### Eight-Year Dropout Trend Wakefield High School

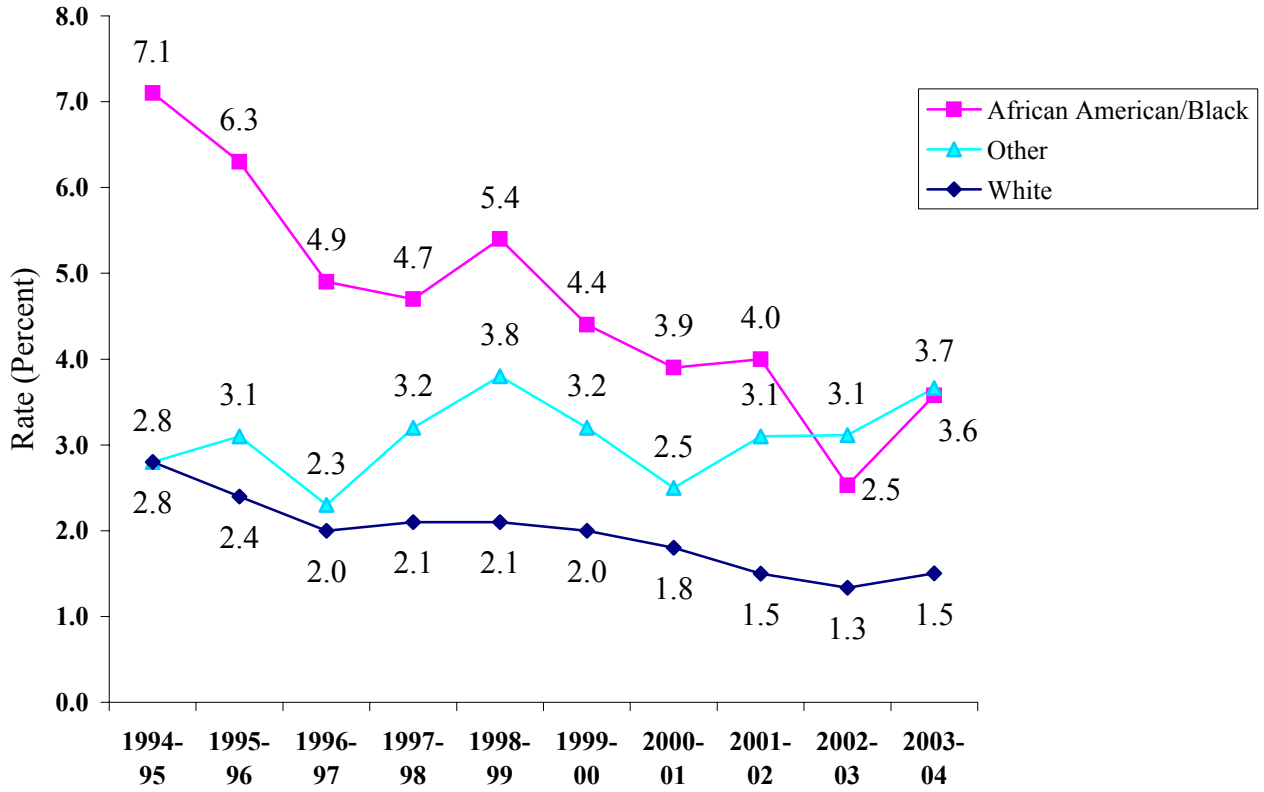


NC and WCPSS Dropout Rates  
 Grades 7-12  
 1992 to 2004



NOTES: 1991-92 was the first year in which dropouts were reported based on federal guidelines and was the first year using the SIMS Dropout Data Summary (DOP-9). Beginning in 1998-99, students transferring to community college GED programs were counted as dropouts. Dropout rates are rounded.

WCPSS Dropout Rates  
 Grades 7-12 by Ethnic Group  
 1995-2004



NOTE: Beginning in 1998-99, students transferring to community college GED programs were counted as dropouts.

**Grades 7-12 Dropouts  
By School  
2003-04**

<b>School</b>				
<b>School</b>	<b>Frequency</b>	<b>Percent</b>	<b>Cumulative Frequency</b>	<b>Cumulative Percent</b>
Apex Middle	8	0.67	8	0.67
Apex High	65	5.47	73	6.14
Athens Drive High	69	5.81	142	11.95
Longview School	7	0.59	149	12.54
Broughton High	63	5.30	212	17.85
Cary High	88	7.41	300	25.25
East Garner Middle	7	0.59	307	25.84
East Millbrook Middle	7	0.59	314	26.43
East Wake Middle	2	0.17	316	26.60
East Wake High	107	9.01	423	35.61
Enloe High	47	3.96	470	39.56
Fuquay-Varina Middle	1	0.08	471	39.65
Fuquay-Varina High	83	6.99	554	46.63
Garner High	111	9.34	665	55.98
Green Hope High	45	3.79	710	59.76
Holly Ridge Middle	2	0.17	712	59.93
Leesville Road Middle	10	0.84	722	60.77
Leesville High	22	1.85	744	62.63
Martin Middle	7	0.59	751	63.22
Middle Creek High	38	3.20	789	66.41
Millbrook High	92	7.74	881	74.16
Mt. Vernon Middle	1	0.08	882	74.24
North Garner Middle	6	0.51	888	74.75
Phillips High	73	6.14	961	80.89
Sanderson High	70	5.89	1031	86.78
S.E. Raleigh High	39	3.28	1070	90.07
Wake Forest-Rolesville High	75	6.31	1145	96.38
Wakefield High	36	3.03	1181	99.41
West Lake Middle	2	0.17	1183	99.58
Zebulon Middle	5	0.42	1188	100.00

**Grades 7-12 Dropouts  
By Grade  
2003-04**

<b>Grade</b>				
<b>Dropout_Grade</b>	<b>Frequency</b>	<b>Percent</b>	<b>Cumulative Frequency</b>	<b>Cumulative Percent</b>
<b>07</b>	17	1.43	17	1.43
<b>08</b>	41	3.45	58	4.88
<b>09</b>	444	37.37	502	42.26
<b>10</b>	285	23.99	787	66.25
<b>11</b>	220	18.52	1007	84.76
<b>12</b>	181	15.24	1188	100.00



**Grades 7-12 Dropouts  
By School by Grade  
2003-04**

Frequency Percent Row Pct Col Pct	Table of School by Dropout_Grade							
	School(School)	Dropout_Grade(Grade)					Total	
		7th	8th	9th	10th	11th		12th
	<b>Apex Middle</b>	3 0.25 37.50 17.65	5 0.42 62.50 12.20	0 0.00 0.00 0.00	0 0.00 0.00 0.00	0 0.00 0.00 0.00	0 0.00 0.00 0.00	8 0.67
	<b>Apex High</b>	0 0.00 0.00 0.00	0 0.00 0.00 0.00	17 1.43 26.15 3.83	11 0.93 16.92 3.86	14 1.18 21.54 6.36	23 1.94 35.38 12.71	65 5.47
	<b>Athens Drive High</b>	0 0.00 0.00 0.00	0 0.00 0.00 0.00	37 3.11 53.62 8.33	14 1.18 20.29 4.91	7 0.59 10.14 3.18	11 0.93 15.94 6.08	69 5.81
	<b>Longview School</b>	0 0.00 0.00 0.00	0 0.00 0.00 0.00	4 0.34 57.14 0.90	1 0.08 14.29 0.35	2 0.17 28.57 0.91	0 0.00 0.00 0.00	7 0.59
	<b>Broughton High</b>	0 0.00 0.00 0.00	0 0.00 0.00 0.00	25 2.10 39.68 5.63	17 1.43 26.98 5.96	11 0.93 17.46 5.00	10 0.84 15.87 5.52	63 5.30
	<b>Cary High</b>	0 0.00 0.00 0.00	0 0.00 0.00 0.00	30 2.53 34.09 6.76	24 2.02 27.27 8.42	23 1.94 26.14 10.45	11 0.93 12.50 6.08	88 7.41
	<b>East Garner Middle</b>	3 0.25 42.86 17.65	4 0.34 57.14 9.76	0 0.00 0.00 0.00	0 0.00 0.00 0.00	0 0.00 0.00 0.00	0 0.00 0.00 0.00	7 0.59
	<b>East Millbrook Middle</b>	2 0.17 28.57 11.76	5 0.42 71.43 12.20	0 0.00 0.00 0.00	0 0.00 0.00 0.00	0 0.00 0.00 0.00	0 0.00 0.00 0.00	7 0.59
	<b>East Wake Middle</b>	0 0.00 0.00 0.00	2 0.17 100.00 4.88	0 0.00 0.00 0.00	0 0.00 0.00 0.00	0 0.00 0.00 0.00	0 0.00 0.00 0.00	2 0.17
	<b>East Wake High</b>	0 0.00 0.00 0.00	0 0.00 0.00 0.00	47 3.96 43.93 10.59	25 2.10 23.36 8.77	23 1.94 21.50 10.45	12 1.01 11.21 6.63	107 9.01
	<b>Enloe High</b>	0 0.00 0.00 0.00	0 0.00 0.00 0.00	20 1.68 42.55 4.50	13 1.09 27.66 4.56	7 0.59 14.89 3.18	7 0.59 14.89 3.87	47 3.96
	<b>Fuquay-Varina Middle</b>	0 0.00 0.00 0.00	1 0.08 100.00 2.44	0 0.00 0.00 0.00	0 0.00 0.00 0.00	0 0.00 0.00 0.00	0 0.00 0.00 0.00	1 0.08

**Grades 7-12 Dropouts  
By School by Grade  
2003-04**

Frequency Percent Row Pct Col Pct	Table of School by Dropout_Grade							
	School(School)	Dropout_Grade(Grade)					Total	
		7th	8th	9th	10th	11th		12th
	<b>Fuquay-Varina High</b>	0 0.00 0.00 0.00	0 0.00 0.00 0.00	22 1.85 26.51 4.95	26 2.19 31.33 9.12	21 1.77 25.30 9.55	14 1.18 16.87 7.73	83 6.99
	<b>Garner High</b>	0 0.00 0.00 0.00	0 0.00 0.00 0.00	42 3.54 37.84 9.46	29 2.44 26.13 10.18	22 1.85 19.82 10.00	18 1.52 16.22 9.94	111 9.34
	<b>Green Hope High</b>	0 0.00 0.00 0.00	0 0.00 0.00 0.00	15 1.26 33.33 3.38	15 1.26 33.33 5.26	10 0.84 22.22 4.55	5 0.42 11.11 2.76	45 3.79
	<b>Holly Ridge Middle</b>	0 0.00 0.00 0.00	2 0.17 100.00 4.88	0 0.00 0.00 0.00	0 0.00 0.00 0.00	0 0.00 0.00 0.00	0 0.00 0.00 0.00	2 0.17
	<b>Leesville Road Middle</b>	4 0.34 40.00 23.53	6 0.51 60.00 14.63	0 0.00 0.00 0.00	0 0.00 0.00 0.00	0 0.00 0.00 0.00	0 0.00 0.00 0.00	10 0.84
	<b>Leesville High</b>	0 0.00 0.00 0.00	0 0.00 0.00 0.00	11 0.93 50.00 2.48	6 0.51 27.27 2.11	5 0.42 22.73 2.27	0 0.00 0.00 0.00	22 1.85
	<b>Martin Middle</b>	1 0.08 14.29 5.88	6 0.51 85.71 14.63	0 0.00 0.00 0.00	0 0.00 0.00 0.00	0 0.00 0.00 0.00	0 0.00 0.00 0.00	7 0.59
	<b>Middle Creek High</b>	0 0.00 0.00 0.00	0 0.00 0.00 0.00	16 1.35 42.11 3.60	15 1.26 39.47 5.26	7 0.59 18.42 3.18	0 0.00 0.00 0.00	38 3.20
	<b>Millbrook High</b>	0 0.00 0.00 0.00	0 0.00 0.00 0.00	38 3.20 41.30 8.56	30 2.53 32.61 10.53	11 0.93 11.96 5.00	13 1.09 14.13 7.18	92 7.74
	<b>Mt. Vernon Middle</b>	0 0.00 0.00 0.00	1 0.08 100.00 2.44	0 0.00 0.00 0.00	0 0.00 0.00 0.00	0 0.00 0.00 0.00	0 0.00 0.00 0.00	1 0.08
	<b>North Garner Middle</b>	2 0.17 33.33 11.76	4 0.34 66.67 9.76	0 0.00 0.00 0.00	0 0.00 0.00 0.00	0 0.00 0.00 0.00	0 0.00 0.00 0.00	6 0.51
	<b>Phillips High</b>	0 0.00 0.00 0.00	0 0.00 0.00 0.00	30 2.53 41.10 6.76	10 0.84 13.70 3.51	25 2.10 34.25 11.36	8 0.67 10.96 4.42	73 6.14

**Grades 7-12 Dropouts  
By School by Grade  
2003-04**

Frequency Percent Row Pct Col Pct	Table of School by Dropout_Grade							
	School(School)	Dropout_Grade(Grade)					Total	
		7th	8th	9th	10th	11th		12th
	<b>Sanderson High</b>	0 0.00 0.00 0.00	0 0.00 0.00 0.00	29 2.44 41.43 6.53	13 1.09 18.57 4.56	13 1.09 18.57 5.91	15 1.26 21.43 8.29	70 5.89
	<b>S.E. Raleigh High</b>	0 0.00 0.00 0.00	0 0.00 0.00 0.00	13 1.09 33.33 2.93	7 0.59 17.95 2.46	4 0.34 10.26 1.82	15 1.26 38.46 8.29	39 3.28
	<b>Wake Forest-Rolesville High</b>	0 0.00 0.00 0.00	0 0.00 0.00 0.00	37 3.11 49.33 8.33	18 1.52 24.00 6.32	11 0.93 14.67 5.00	9 0.76 12.00 4.97	75 6.31
	<b>Wakefield High</b>	0 0.00 0.00 0.00	0 0.00 0.00 0.00	11 0.93 30.56 2.48	11 0.93 30.56 3.86	4 0.34 11.11 1.82	10 0.84 27.78 5.52	36 3.03
	<b>West Lake Middle</b>	1 0.08 50.00 5.88	1 0.08 50.00 2.44	0 0.00 0.00 0.00	0 0.00 0.00 0.00	0 0.00 0.00 0.00	0 0.00 0.00 0.00	2 0.17
	<b>Zebulon Middle</b>	1 0.08 20.00 5.88	4 0.34 80.00 9.76	0 0.00 0.00 0.00	0 0.00 0.00 0.00	0 0.00 0.00 0.00	0 0.00 0.00 0.00	5 0.42
	<b>Total</b>	17 1.43	41 3.45	444 37.37	285 23.99	220 18.52	181 15.24	1188 100.00

**Grades 7-12 Dropouts  
By Reason for Dropping Out  
2003-04**

<b>Reason for Dropping Out</b>				
<b>Reason</b>	<b>Frequency</b>	<b>Percent</b>	<b>Cumulative Frequency</b>	<b>Cumulative Percent</b>
<b>Academic Problems</b>	40	3.37	40	3.37
<b>Attendance Family</b>	2	0.17	42	3.54
<b>Attendance Personal</b>	21	1.77	63	5.30
<b>Attendance School</b>	79	6.65	142	11.95
<b>Attendance</b>	488	41.08	630	53.03
<b>Attendance Work</b>	11	0.93	641	53.96
<b>Need to Care for Children</b>	2	0.17	643	54.12
<b>Commun. Coll. Dropout from Approved Program</b>	145	12.21	788	66.33
<b>Discipline Problems</b>	7	0.59	795	66.92
<b>Health Problems</b>	3	0.25	798	67.17
<b>Unstable Home Environment</b>	2	0.17	800	67.34
<b>Incarcerated in Adult Facility</b>	5	0.42	805	67.76
<b>Long-Term Suspension</b>	83	6.99	888	74.75
<b>Move-- School Status Unknown</b>	245	20.62	1133	95.37
<b>Pregnancy</b>	1	0.08	1134	95.45
<b>Runaway</b>	7	0.59	1141	96.04
<b>Choice of Work Over School</b>	47	3.96	1188	100.00

**Grades 7-12 Dropouts  
By Age  
2003-04**

<b>Age</b>				
<b>Dropout_Age</b>	<b>Frequency</b>	<b>Percent</b>	<b>Cumulative Frequency</b>	<b>Cumulative Percent</b>
<b>13</b>	8	0.67	8	0.67
<b>14</b>	21	1.77	29	2.44
<b>15</b>	46	3.87	75	6.31
<b>16</b>	161	13.55	236	19.87
<b>17</b>	270	22.73	506	42.59
<b>18</b>	389	32.74	895	75.34
<b>19</b>	222	18.69	1117	94.02
<b>20</b>	61	5.13	1178	99.16
<b>21</b>	10	0.84	1188	100.00

**Grades 7-12 Dropouts  
By Age by Grade  
2003-04**

Frequency Percent Row Pct Col Pct	Table of Dropout_Age by Dropout_Grade						
	Dropout_Age(Age)	Dropout_Grade(Grade)					Total
		7th	8th	9th	10th	11th	
<b>13</b>	8	0	0	0	0	0	8
	0.67	0.00	0.00	0.00	0.00	0.00	0.67
	100.00	0.00	0.00	0.00	0.00	0.00	
	47.06	0.00	0.00	0.00	0.00	0.00	
<b>14</b>	3	17	1	0	0	0	21
	0.25	1.43	0.08	0.00	0.00	0.00	1.77
	14.29	80.95	4.76	0.00	0.00	0.00	
	17.65	41.46	0.23	0.00	0.00	0.00	
<b>15</b>	2	4	40	0	0	0	46
	0.17	0.34	3.37	0.00	0.00	0.00	3.87
	4.35	8.70	86.96	0.00	0.00	0.00	
	11.76	9.76	9.01	0.00	0.00	0.00	
<b>16</b>	4	18	99	37	3	0	161
	0.34	1.52	8.33	3.11	0.25	0.00	13.55
	2.48	11.18	61.49	22.98	1.86	0.00	
	23.53	43.90	22.30	12.98	1.36	0.00	
<b>17</b>	0	2	155	77	34	2	270
	0.00	0.17	13.05	6.48	2.86	0.17	22.73
	0.00	0.74	57.41	28.52	12.59	0.74	
	0.00	4.88	34.91	27.02	15.45	1.10	
<b>18</b>	0	0	112	118	94	65	389
	0.00	0.00	9.43	9.93	7.91	5.47	32.74
	0.00	0.00	28.79	30.33	24.16	16.71	
	0.00	0.00	25.23	41.40	42.73	35.91	
<b>19</b>	0	0	30	43	66	83	222
	0.00	0.00	2.53	3.62	5.56	6.99	18.69
	0.00	0.00	13.51	19.37	29.73	37.39	
	0.00	0.00	6.76	15.09	30.00	45.86	
<b>20</b>	0	0	6	9	21	25	61
	0.00	0.00	0.51	0.76	1.77	2.10	5.13
	0.00	0.00	9.84	14.75	34.43	40.98	
	0.00	0.00	1.35	3.16	9.55	13.81	
<b>21</b>	0	0	1	1	2	6	10
	0.00	0.00	0.08	0.08	0.17	0.51	0.84
	0.00	0.00	10.00	10.00	20.00	60.00	
	0.00	0.00	0.23	0.35	0.91	3.31	
<b>Total</b>	17	41	444	285	220	181	1188
	1.43	3.45	37.37	23.99	18.52	15.24	100.00

**Grades 7-12 Dropouts  
By Race  
2003-04**

<b>Race</b>				
<b>Race</b>	<b>Frequency</b>	<b>Percent</b>	<b>Cumulative Frequency</b>	<b>Cumulative Percent</b>
<b>American Indian</b>	5	0.42	5	0.42
<b>Asian</b>	24	2.02	29	2.44
<b>Black</b>	507	42.68	536	45.12
<b>Hispanic/Latino</b>	176	14.81	712	59.93
<b>Multi-racial</b>	23	1.94	735	61.87
<b>White</b>	453	38.13	1188	100.00

**Grades 7-12 Dropouts  
By Grade by Race  
2003-04**

**Frequency  
Percent  
Row Pct  
Col Pct**

Table of Dropout_Grade by Race							
Dropout_Grade(Grade)	Race(Race)						Total
	American Indian	Asian	Black	Hispanic/Latino	Multi-racial	White	
<b>7th</b>	0 0.00 0.00 0.00	0 0.00 0.00 0.00	6 0.51 35.29 1.18	5 0.42 29.41 2.84	0 0.00 0.00 0.00	6 0.51 35.29 1.32	17 1.43
<b>8th</b>	0 0.00 0.00 0.00	2 0.17 4.88 8.33	14 1.18 34.15 2.76	4 0.34 9.76 2.27	2 0.17 4.88 8.70	19 1.60 46.34 4.19	41 3.45
<b>9th</b>	4 0.34 0.90 80.00	6 0.51 1.35 25.00	214 18.01 48.20 42.21	92 7.74 20.72 52.27	8 0.67 1.80 34.78	120 10.10 27.03 26.49	444 37.37
<b>10th</b>	1 0.08 0.35 20.00	4 0.34 1.40 16.67	122 10.27 42.81 24.06	46 3.87 16.14 26.14	9 0.76 3.16 39.13	103 8.67 36.14 22.74	285 23.99
<b>11th</b>	0 0.00 0.00 0.00	9 0.76 4.09 37.50	89 7.49 40.45 17.55	13 1.09 5.91 7.39	3 0.25 1.36 13.04	106 8.92 48.18 23.40	220 18.52
<b>12th</b>	0 0.00 0.00 0.00	3 0.25 1.66 12.50	62 5.22 34.25 12.23	16 1.35 8.84 9.09	1 0.08 0.55 4.35	99 8.33 54.70 21.85	181 15.24
<b>Total</b>	5 0.42	24 2.02	507 42.68	176 14.81	23 1.94	453 38.13	1188 100.00



**Grades 7-12 Dropouts  
By Gender  
2003-04**

<b>Gender</b>				
<b>Gender</b>	<b>Frequency</b>	<b>Percent</b>	<b>Cumulative Frequency</b>	<b>Cumulative Percent</b>
<b>Female</b>	479	40.32	479	40.32
<b>Male</b>	709	59.68	1188	100.00

**Grades 7-12 Dropouts  
By Gender by Race  
2003-04**

**Frequency  
Percent  
Row Pct  
Col Pct**

<b>Table of Gender by Race</b>							
<b>Gender(Gender)</b>	<b>Race(Race)</b>						<b>Total</b>
	<b>American Indian</b>	<b>Asian</b>	<b>Black</b>	<b>Hispanic/Latino</b>	<b>Multi-racial</b>	<b>White</b>	
<b>Female</b>	2	13	212	79	9	164	479
	0.17	1.09	17.85	6.65	0.76	13.80	40.32
	0.42	2.71	44.26	16.49	1.88	34.24	
	40.00	54.17	41.81	44.89	39.13	36.20	
<b>Male</b>	3	11	295	97	14	289	709
	0.25	0.93	24.83	8.16	1.18	24.33	59.68
	0.42	1.55	41.61	13.68	1.97	40.76	
	60.00	45.83	58.19	55.11	60.87	63.80	
<b>Total</b>	5	24	507	176	23	453	1188
	0.42	2.02	42.68	14.81	1.94	38.13	100.00

**Grades 7-12 Dropouts  
By Lunch  
2003-04**

<b>Lunch</b>	<b>Frequency</b>	<b>Percent</b>	<b>Cumulative Frequency</b>	<b>Cumulative Percent</b>
<b>Free</b>	39	3.28	39	3.28
<b>Reduced</b>	3	0.25	42	3.54
<b>Not Free or Reduced</b>	1146	96.46	1188	100.00

**Grades 7-12 Dropouts  
By Special Programs Status  
2003-04**

<b>SpecEd</b>	<b>Frequency</b>	<b>Percent</b>	<b>Cumulative Frequency</b>	<b>Cumulative Percent</b>
<b>Not Special Education</b>	873	73.48	873	73.48
<b>Trainable Mentally Disabled (TMD)</b>	1	0.08	874	73.57
<b>Learning Disabled (LD)</b>	155	13.05	1029	86.62
<b>Other Health Impaired (OHI)</b>	54	4.55	1083	91.16
<b>Hearing Impaired (HI)</b>	4	0.34	1087	91.50
<b>Speech/Language Impaired (SI/LI)</b>	3	0.25	1090	91.75
<b>Behaviorally/Emotionally Disabled (BED)</b>	50	4.21	1140	95.96
<b>Educable Mentally Disabled (EMD)</b>	15	1.26	1155	97.22
<b>Visually Impaired (VI)</b>	1	0.08	1156	97.31
<b>Orthopedically Impaired (OI)</b>	2	0.17	1158	97.47
<b>Academically Gifted (AG)</b>	30	2.53	1188	100.00

***Middle School Dropouts  
By School  
2003-04***

<b>School</b>				
<b>School</b>	<b>Frequency</b>	<b>Percent</b>	<b>Cumulative Frequency</b>	<b>Cumulative Percent</b>
<b>Apex Middle</b>	11	16.92	11	16.92
<b>East Garner Middle</b>	7	10.77	18	27.69
<b>East Millbrook Middle</b>	8	12.31	26	40.00
<b>East Wake Middle</b>	2	3.08	28	43.08
<b>Fuquay-Varina Middle</b>	1	1.54	29	44.62
<b>Holly Ridge Middle</b>	2	3.08	31	47.69
<b>Leesville Road Middle</b>	13	20.00	44	67.69
<b>Martin Middle</b>	7	10.77	51	78.46
<b>Mt. Vernon Middle</b>	1	1.54	52	80.00
<b>North Garner Middle</b>	6	9.23	58	89.23
<b>West Lake Middle</b>	2	3.08	60	92.31
<b>Zebulon Middle</b>	5	7.69	65	100.00

***Middle School Dropouts  
By Grade  
2003-04***

<b>Grade</b>				
<b>Dropout_Grade</b>	<b>Frequency</b>	<b>Percent</b>	<b>Cumulative Frequency</b>	<b>Cumulative Percent</b>
<b>06</b>	7	10.77	7	10.77
<b>07</b>	17	26.15	24	36.92
<b>08</b>	41	63.08	65	100.00

***Middle School Dropouts  
By School by Grade  
2003-04***

Frequency Percent Row Pct Col Pct	Table of School by Dropout_Grade				
	School(School)	Dropout_Grade(Grade)			Total
		6th	7th	8th	
	<b>Apex Middle</b>	3 4.62 27.27 42.86	3 4.62 27.27 17.65	5 7.69 45.45 12.20	11 16.92
	<b>East Garner Middle</b>	0 0.00 0.00 0.00	3 4.62 42.86 17.65	4 6.15 57.14 9.76	7 10.77
	<b>East Millbrook Middle</b>	1 1.54 12.50 14.29	2 3.08 25.00 11.76	5 7.69 62.50 12.20	8 12.31
	<b>East Wake Middle</b>	0 0.00 0.00 0.00	0 0.00 0.00 0.00	2 3.08 100.00 4.88	2 3.08
	<b>Fuquay-Varina Middle</b>	0 0.00 0.00 0.00	0 0.00 0.00 0.00	1 1.54 100.00 2.44	1 1.54
	<b>Holly Ridge Middle</b>	0 0.00 0.00 0.00	0 0.00 0.00 0.00	2 3.08 100.00 4.88	2 3.08
	<b>Leesville Road Middle</b>	3 4.62 23.08 42.86	4 6.15 30.77 23.53	6 9.23 46.15 14.63	13 20.00
	<b>Martin Middle</b>	0 0.00 0.00 0.00	1 1.54 14.29 5.88	6 9.23 85.71 14.63	7 10.77
	<b>Mt. Vernon Middle</b>	0 0.00 0.00 0.00	0 0.00 0.00 0.00	1 1.54 100.00 2.44	1 1.54
	<b>North Garner Middle</b>	0 0.00 0.00 0.00	2 3.08 33.33 11.76	4 6.15 66.67 9.76	6 9.23
	<b>West Lake Middle</b>	0 0.00 0.00 0.00	1 1.54 50.00 5.88	1 1.54 50.00 2.44	2 3.08

***Middle School Dropouts  
By School by Grade  
2003-04***

Frequency Percent Row Pct Col Pct	Table of School by Dropout_Grade				
	School(School)	Dropout_Grade(Grade)			Total
		6th	7th	8th	
	<b>Zebulon Middle</b>	0	1	4	5
		0.00	1.54	6.15	7.69
		0.00	20.00	80.00	
		0.00	5.88	9.76	
	<b>Total</b>	7	17	41	65
		10.77	26.15	63.08	100.00



***Middle School Dropouts  
By Reason for Dropping Out  
2003-04***

<b>Reason for Dropping Out</b>				
<b>Reason</b>	<b>Frequency</b>	<b>Percent</b>	<b>Cumulative Frequency</b>	<b>Cumulative Percent</b>
<b>Attendance School</b>	3	4.62	3	4.62
<b>Attendance</b>	9	13.85	12	18.46
<b>Attendance Work</b>	1	1.54	13	20.00
<b>Commun. Coll. Dropout from Approved Program</b>	1	1.54	14	21.54
<b>Long-Term Suspension</b>	9	13.85	23	35.38
<b>Move-- School Status Unknown</b>	42	64.62	65	100.00

***Middle School Dropouts  
By Age  
2003-04***

<b>Age</b>				
<b>Dropout_Age</b>	<b>Frequency</b>	<b>Percent</b>	<b>Cumulative Frequency</b>	<b>Cumulative Percent</b>
<b>12</b>	5	7.69	5	7.69
<b>13</b>	10	15.38	15	23.08
<b>14</b>	20	30.77	35	53.85
<b>15</b>	6	9.23	41	63.08
<b>16</b>	22	33.85	63	96.92
<b>17</b>	2	3.08	65	100.00

**Middle School Dropouts**  
**By Age by Grade**  
**2003-04**

Frequency Percent Row Pct Col Pct	Table of Dropout_Age by Dropout_Grade				
	Dropout_Age(Age)	Dropout_Grade(Grade)			Total
		06	07	08	
	<b>12</b>	5 7.69 100.00 71.43	0 0.00 0.00 0.00	0 0.00 0.00 0.00	5 7.69
	<b>13</b>	2 3.08 20.00 28.57	8 12.31 80.00 47.06	0 0.00 0.00 0.00	10 15.38
	<b>14</b>	0 0.00 0.00 0.00	3 4.62 15.00 17.65	17 26.15 85.00 41.46	20 30.77
	<b>15</b>	0 0.00 0.00 0.00	2 3.08 33.33 11.76	4 6.15 66.67 9.76	6 9.23
	<b>16</b>	0 0.00 0.00 0.00	4 6.15 18.18 23.53	18 27.69 81.82 43.90	22 33.85
	<b>17</b>	0 0.00 0.00 0.00	0 0.00 0.00 0.00	2 3.08 100.00 4.88	2 3.08
	<b>Total</b>	7 10.77	17 26.15	41 63.08	65 100.00

***Middle School Dropouts  
By Race  
2003-04***

<b>Race</b>				
<b>Race</b>	<b>Frequency</b>	<b>Percent</b>	<b>Cumulative Frequency</b>	<b>Cumulative Percent</b>
<b>Asian</b>	3	4.62	3	4.62
<b>Black/African American</b>	21	32.31	24	36.92
<b>Hispanic/Latino</b>	9	13.85	33	50.77
<b>Multi-racial</b>	2	3.08	35	53.85
<b>White</b>	30	46.15	65	100.00

**Middle School Dropouts  
By Grade by Race  
2003-04**

**Frequency  
Percent  
Row Pct  
Col Pct**

Table of Dropout_Grade by Race						
Dropout_Grade(Grade)	Race(Race)					Total
	Asian	Black/African American	Hispanic/Latino	Multi-racial	White	
<b>6th</b>	1 1.54 14.29 33.33	1 1.54 14.29 4.76	0 0.00 0.00 0.00	0 0.00 0.00 0.00	5 7.69 71.43 16.67	7 10.77
<b>7th</b>	0 0.00 0.00 0.00	6 9.23 35.29 28.57	5 7.69 29.41 55.56	0 0.00 0.00 0.00	6 9.23 35.29 20.00	17 26.15
<b>8th</b>	2 3.08 4.88 66.67	14 21.54 34.15 66.67	4 6.15 9.76 44.44	2 3.08 4.88 100.00	19 29.23 46.34 63.33	41 63.08
<b>Total</b>	3 4.62	21 32.31	9 13.85	2 3.08	30 46.15	65 100.00

***Middle School Dropouts  
By Gender  
2003-04***

<b>Gender</b>				
<b>Gender</b>	<b>Frequency</b>	<b>Percent</b>	<b>Cumulative Frequency</b>	<b>Cumulative Percent</b>
<b>Female</b>	28	43.08	28	43.08
<b>Male</b>	37	56.92	65	100.00

**Middle School Dropouts  
By Gender by Race  
2003-04**

**Frequency  
Percent  
Row Pct  
Col Pct**

Table of Gender by Race						
Gender(Gender)	Race(Race)					Total
	Asian	Black/African American	Hispanic/Latino	Multi-racial	White	
<b>Female</b>	2 3.08 7.14 66.67	6 9.23 21.43 28.57	2 3.08 7.14 22.22	2 3.08 7.14 100.00	16 24.62 57.14 53.33	28 43.08
<b>Male</b>	1 1.54 2.70 33.33	15 23.08 40.54 71.43	7 10.77 18.92 77.78	0 0.00 0.00 0.00	14 21.54 37.84 46.67	37 56.92
<b>Total</b>	3 4.62	21 32.31	9 13.85	2 3.08	30 46.15	65 100.00

***Middle School Dropouts  
By Lunch  
2003-04***

<b>Lunch</b>	<b>Frequency</b>	<b>Percent</b>	<b>Cumulative Frequency</b>	<b>Cumulative Percent</b>
<b>Free</b>	1	1.54	1	1.54
<b>Not Free or Reduced</b>	64	98.46	65	100.00



***Middle School Dropouts  
By Special Programs Status  
2003-04***

<b>SpecEd</b>	<b>Frequency</b>	<b>Percent</b>	<b>Cumulative Frequency</b>	<b>Cumulative Percent</b>
<b>Not Special Education</b>	50	76.92	50	76.92
<b>Learning Disabled (LD)</b>	6	9.23	56	86.15
<b>Behaviorally/Emotionally Disabled (BED)</b>	3	4.62	59	90.77
<b>Academically Gifted (AG)</b>	5	7.69	64	98.46
<b>Other Health Impaired (OHI)</b>	1	1.54	65	100.00