



E&R Report No.04.22

August 2004

## END-OF-GRADE MULTIPLE-CHOICE TEST RESULTS FOR 2003-04

Authors: Roger Regan and Glenda Haynie

### *ABSTRACT*

The percentage of reading and math tests taken by Wake County Public School System (WCPSS) students in grades 3-8 that resulted in Level III or IV scores fell slightly in 2004 to 91.1% from 91.3% in 2003. However, the percentage of students scoring in Level IV remained stable at 60.4%. The percentage of students scoring in Level III or IV was slightly higher in Math (92.1%) than in Reading (90.0%). Average reading scale scores showed slight declines at all grade levels except grade 5, while average math scale scores rose slightly in grades 4, 5, 6, and 7 and fell slightly in grades 3 and 8. Disaggregation of scores by race/ethnicity showed a small decline (down about two percentage points) in the percentage of Hispanic scores on grade level in both reading and math, a small rise (less than one point) for Asian and Black students in both reading and math, and mixed results for White and Multi-ethnic groups. Students from low-income families and students with disabilities showed small improvements in both reading and math.

### BACKGROUND

All End-of-Grade (EOG) tests are designed to measure student mastery of the knowledge and skills of the North Carolina Standard Course of Study for students in grades 3 through 8. The tests are administered during the final three weeks of the school year, and are a vital part of the North Carolina accountability program referred to as “ABCs”—Accountability, Basics, and Control. EOG test results are used to determine whether schools met annual ABCs Growth and Performance targets and whether or not schools made “Adequate Yearly Progress” (AYP), a new standard required by the federal No Child Left Behind (NCLB) law. Students who fail to score at or above grade level are retested with an alternate form of the test and may be considered for retention.

#### Key Topics

Overall District Results-----p. 2-6  
Results by Grade Level-----p. 7-9  
Disaggregated Results-----p. 10-18  
School-by-School Results----Attachment

## DISTRICTWIDE RESULTS

Although down slightly from the previous year, the percentage of all EOG exam scores at or above grade level (Level 3 or 4) in 2004 surpassed 90% for the second year in a row. The composite percentage, which includes reading and math scores for all grade 3-8 students who took an EOG exam, declined from 91.3% in 2003 to 91.1% in 2004.

In reading, the percentage of all grade 3-8 students scoring at or above grade level decreased from 90.4% in 2003 to 90.0% in 2004. In math, the percentage declined from 92.3% to 92.1%. More than 85% of students met or exceeded grade-level standards in both reading and math at all grade levels.

Results were mixed for the majority of student groups whose performance is tracked. In contrast to 2003, no large gains in reading and math achievement were shown by any major student groups at any grade level.

Overall results for Hispanic/Latino students were down about two percentage points in both reading and math compared to the previous year. On the other hand, students receiving free or reduced lunch and students with disabilities made modest gains in both subjects.

### ACHIEVEMENT LEVEL SCORES

The achievement level score attempts to categorize student performance on EOG exams according to four broad levels, defined by the North Carolina Department of Public Instruction (NCDPI) as follows:

#### Achievement Levels

**Level I:** Students performing at this level do not have sufficient mastery of knowledge and skills in this subject area to be successful at the next grade level.

**Level III:** Students performing at this level consistently demonstrate mastery of grade level subject matter and skills and are well prepared for the next grade level.

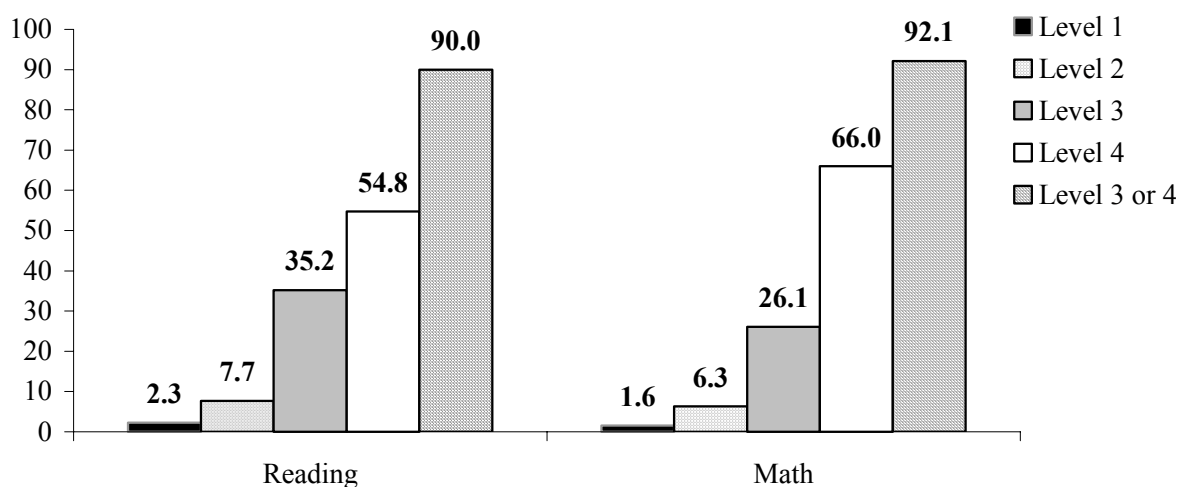
**Level II:** Students performing at this level demonstrate inconsistent mastery of knowledge and skills in this subject area, and are minimally prepared to be successful at the next grade level.

**Level IV:** Students performing at this level consistently perform in a superior manner clearly beyond that required to be proficient at grade-level work.

#### 2003-04 EOG Scores by Achievement Level

An analysis of all grade 3-8 EOG scores by achievement level shows that on each test, a majority of students attained a Level 4 (54.8% in reading and 66.0% in math) in 2003-04. When these percentages are combined with those for Level 3, the results show that 90.0% of students met or exceeded grade-level standards in reading, and 92.1% in math. (See figure 1 below.)

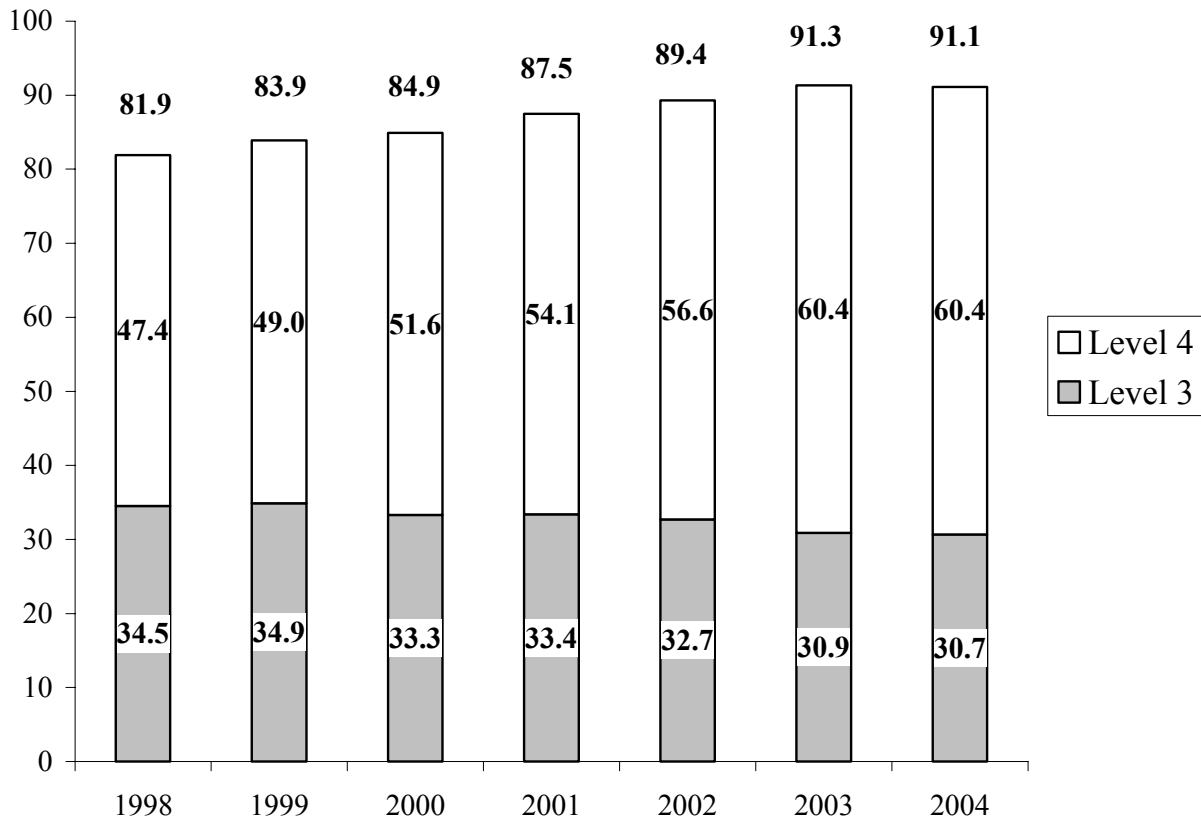
**Figure 1**  
**Percentage of All Grade 3-8 Reading and Math EOG Scores**  
**by Achievement Level 2003-04**



**Composite Percentages over Time**

Figure 2 shows the composite percentages of all grade 3-8 EOG scores meeting or exceeding grade level standards in reading and math over the past seven years. Scores are calculated separately for each test and then added together to derive these statistics. The composite percentage of Level 3 and 4 scores decreased slightly from 91.3% in 2003 to 91.1% in 2004. The overall proportion of Level 4 scores stayed the same (60.4%), while the proportion of Level 3 scores (30.7%) dropped modestly. Since 1998, the composite percentage of reading and math scores at or above grade level has risen 9.2 percentage points, and the percentage of Level 4 scores has risen 13 percentage points.

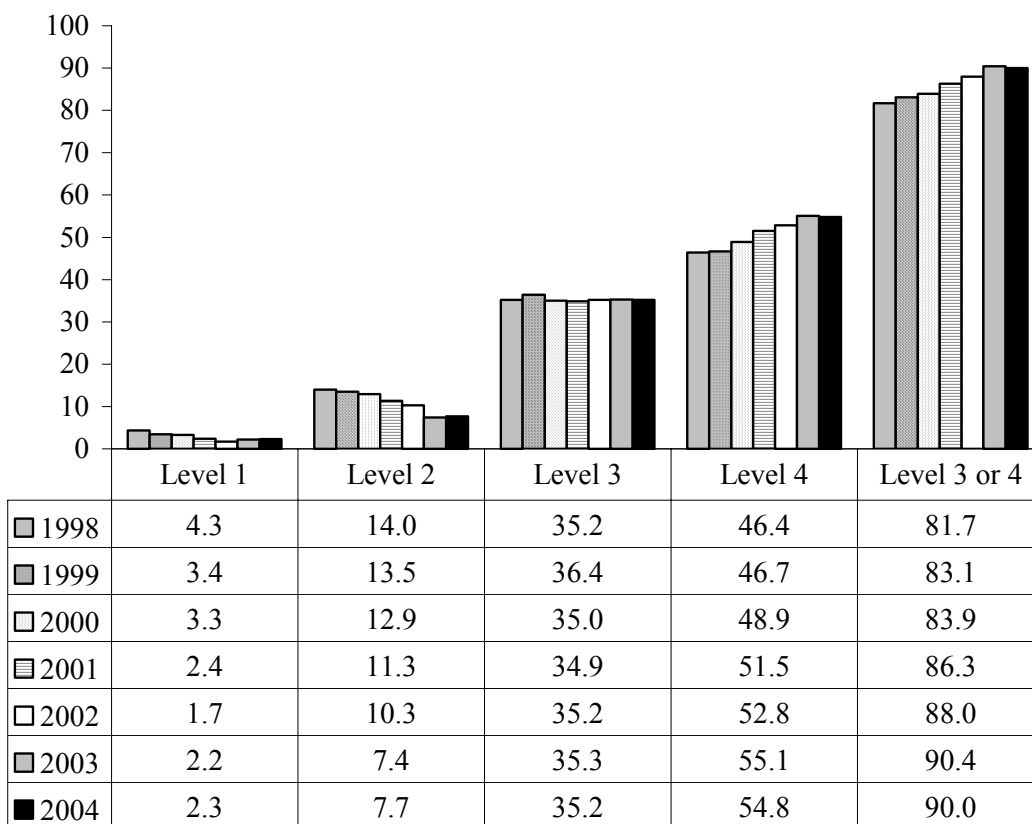
**Figure 2**  
**Composite Percentages of All EOG Scores At/Above Grade Level**  
**Reading and Math, 1998-2004**



**Student Achievement in Reading Over Time**

Examination of Figure 3, which shows the distribution of reading scores by achievement level for the past seven years, reveals that the percentage of students scoring at Level 1 and Level 2 (below grade-level standards) rose four-tenths of a percentage point compared to the previous year, corresponding to the slight drop at Level 3 and Level 4. Nevertheless, the trend over the past eight years has been fairly consistent: the percentage of exam scores at Levels 1 and 2 has dropped in half since 1998, the percentage at Level 3 has stayed very stable, and the percentage at Level 4 has increased about 10 percentage points.

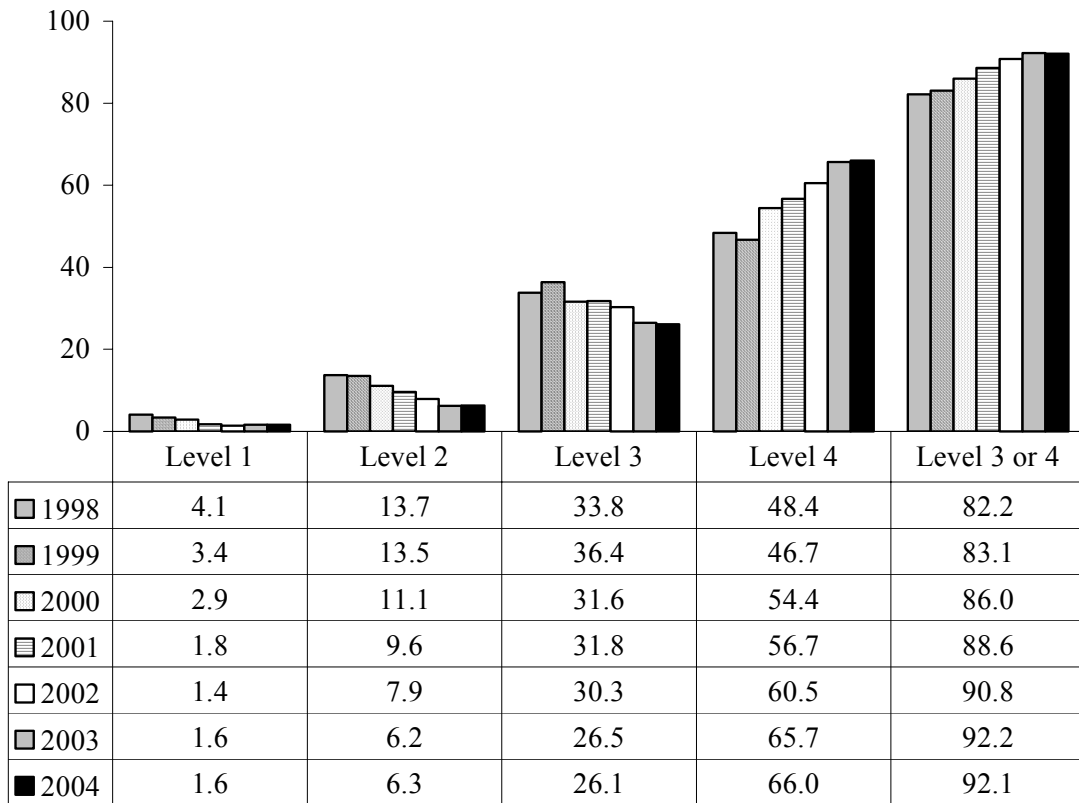
**Figure 3**  
**Percentage of All Grade 3-8 Reading EOG Scores**  
**by Achievement Level, 1998-2004**



**Student Achievement in Math Over Time**

As shown in Figure 4, the distribution of math scores by achievement level in 2004 was nearly identical to the previous year. The percentage of scores at Level 3 declined four-tenths of a percent but the percentage at Level 4 rose three-tenths of a percent. Since 1998, the overall share of Level 1 and Level 2 scores has declined by almost 10 percentage points, while the share at Level 4 has risen 18 percentage points.

**Figure 4**  
**Percent of All Grade 3-8 Math EOG Scores**  
**by Achievement Level, 1998-2004**

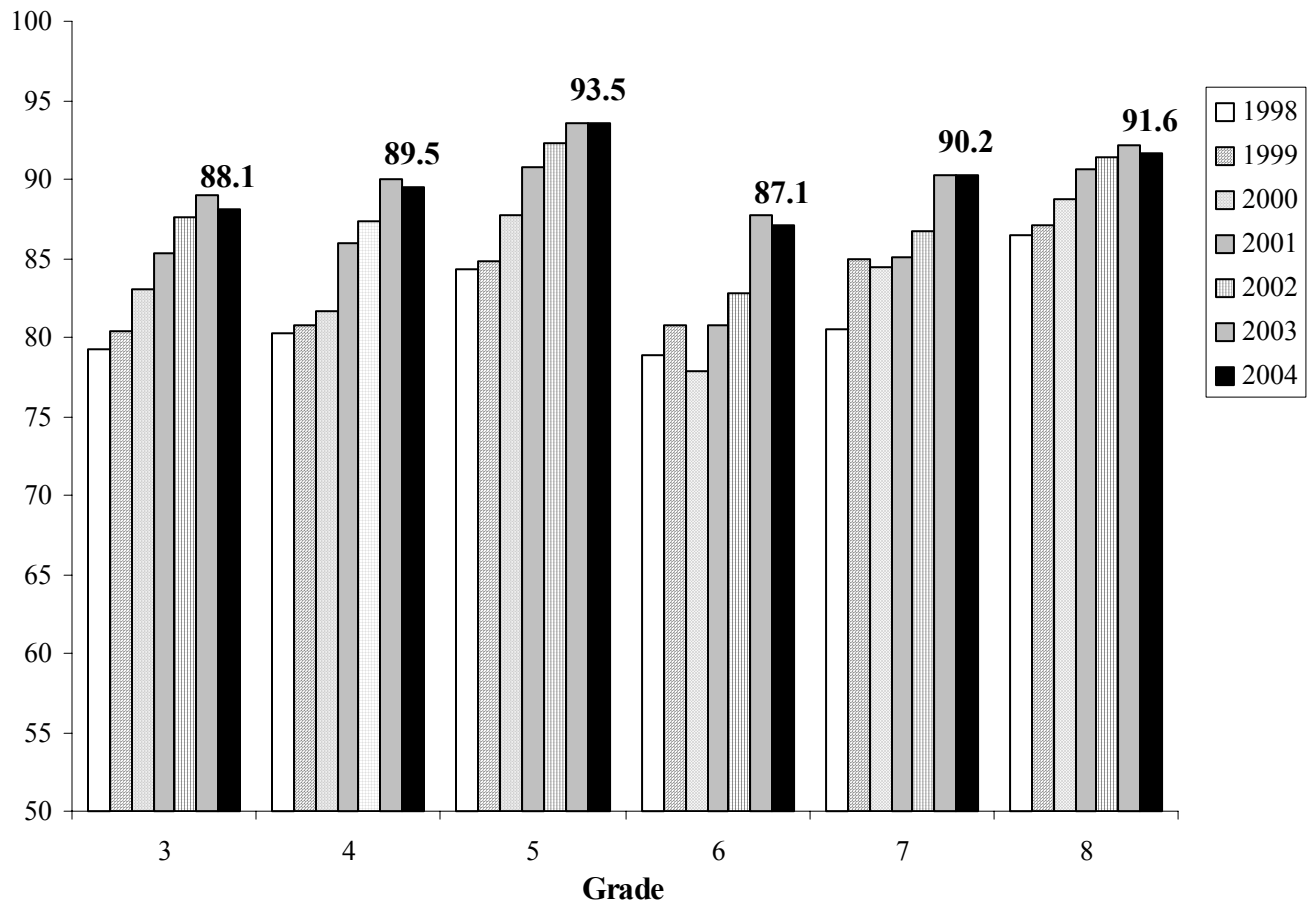


**ACHIEVEMENT GROWTH OVER TIME BY GRADE LEVEL & COHORT**

By comparing EOG exam results for a grade level to results achieved in previous years, we see some indication of changes in achievement over time, although it must be noted that different groups of students are in each grade level each year. The following graphs (Figures 5 and 6) show changes within each grade level over the past seven years in reading and math.

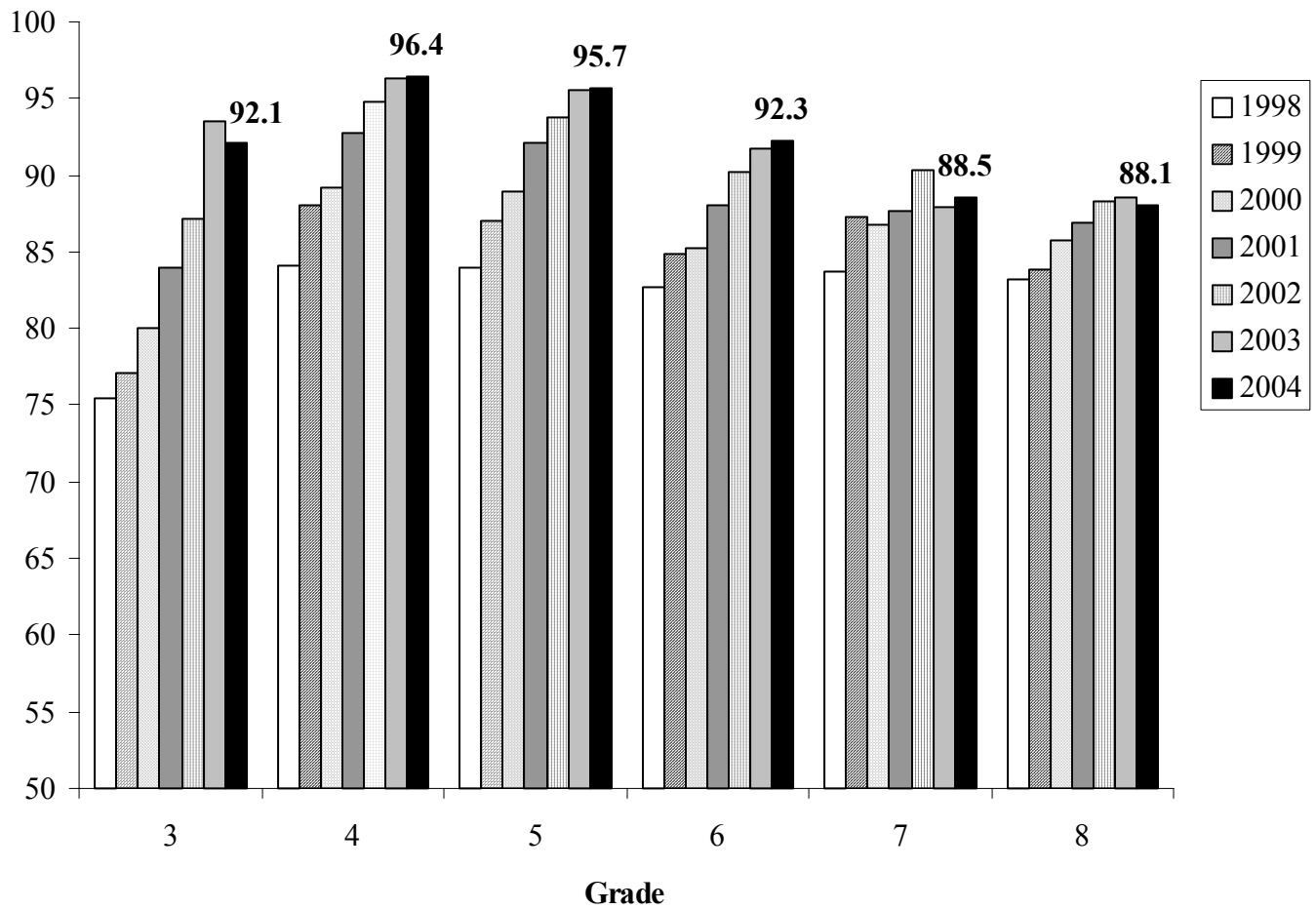
In reading, the percentage of students scoring at or above grade level declined slightly from the previous year for all grade levels except Grade 5. However, over the past seven years, the overall trend in all grade levels has been fairly steady improvement.

**Figure 5  
Percentage of WCPSS Students at/above Grade Level in Reading  
by Grade, 1998-2004**



Compared to the previous year, the percentage of students scoring at or above grade level in math fell slightly in grades 3, 6, and 8; the percentage rose in grades 4, 5, and 7. Similar to reading, student achievement in math has shown steady growth in all grade levels over the past seven years, with growth in grades 3-5 especially sharp.

**Figure 6**  
**Percent of WCPSS Students At/Above Grade Level in Mathematics**  
**By Grade, 1995-2004**





### Achievement Growth by Cohort

One important way of examining test scores is to follow the progress of a cohort of students over time. The shaded boxes in the tables below (Figures 7 and 8) show the achievement level scores of different cohorts of students. For example, one cohort of students was in 3<sup>rd</sup> grade in 1999 and completed 8<sup>th</sup> grade in 2004. Over time, the percentage of students in that cohort who were in Levels 3 and 4, and therefore considered to be “at or above grade level,” in reading increased from 80.4% in 1999 to 91.6% in 2004.

**Figure 7**  
**WCPSS Reading Achievement Levels over Time**  
**Percentage of Students at Levels 3 and 4 (1995-2004)**

Grade	1995	1996	1997	1998	1999	2000	2001	2002	2003	2004
3	74.4	76.3	75.3	79.3	80.4	83.1	85.3	87.6	89.0	88.1
4	75.2	79.9	78.7	80.3	80.8	81.6	85.9	87.4	90.0	89.5
5	79.6	77.7	80.3	84.3	84.8	87.7	90.8	92.3	93.5	93.5
6	76.8	78.8	77.8	78.8	80.7	77.9	80.7	82.8	87.7	87.1
7	80.2	78.1	78.6	80.5	84.9	84.4	85.1	86.7	90.3	90.2
8	84.0	82.8	83.3	86.4	87.1	88.7	90.6	91.4	92.2	91.6

Math achievement for the cohort of students that was in 3<sup>rd</sup> grade in 1999 and completed 8<sup>th</sup> grade in 2004 shows growth over time but declines in 6<sup>th</sup> grade and 7<sup>th</sup> grade. The percentage of students in that cohort who were in Levels 3 and 4, and therefore considered to be “at or above grade level,” in math increased from 77.1% in grade 3 to 88.1% in grade 8.

**Figure 8**  
**WCPSS Mathematics Achievement Levels over Time**  
**Percentage of Students at Levels 3 and 4 (1995-2004)**

Grade	1995	1996	1997	1998	1999	2000	2001	2002	2003	2004
3	73.5	76.9	76.8	75.4	77.1	80.0	84.0	87.1	93.5	92.1
4	78.0	79.6	83.3	84.1	88.1	89.2	92.7	94.8	96.3	96.4
5	77.2	78.3	80.2	84.0	87.0	88.9	92.1	93.8	95.6	95.7
6	80.1	80.7	79.7	82.7	84.8	85.3	88.1	90.2	91.7	92.3
7	81.0	80.2	81.0	83.7	87.3	86.8	87.6	90.3	87.9	88.5
8	83.2	80.6	79.0	83.2	83.8	85.7	86.9	88.3	88.6	88.1

### SCALE SCORES

EOG scale scores were developed by staff at the Thurstone Psychometric Laboratory at UNC-Chapel Hill. Scale scores cover the entire span from grade 3 through grade 8, and are designed to show academic growth over time. The scales were originally designed to begin near 100 and end near 200 with a mean of approximately 150 (anchored at the 5<sup>th</sup> grade). Mean (average) scale scores for cohorts are expected to increase as students move through grade levels and are an important way to track group changes from year to year.

New reading scale scores were developed by NCDPI and used for reporting results on new reading tests administered in 2002-03. The new scale range goes from 213 to 290. The math scale scores were recalibrated and implemented in 2000-01. The math scale range goes from 211 to 310. Figures 9 and 10 show mean scale scores in reading and math by grade level.

**Figure 9**  
**WCPSS Reading Scale Score Means, 1996-2004**

<b>Grade</b>	<b>1996</b>	<b>1997</b>	<b>1998</b>	<b>1999</b>	<b>2000</b>	<b>2001</b>	<b>2002</b>	<b>2003</b>	<b>2004</b>
<b>3</b>	147.0	146.9	148.2	148.7	149.6	150.2	150.9	250.6	250.3
<b>4</b>	151.7	151.6	152.4	152.3	152.9	154.1	154.4	255.0	255.0
<b>5</b>	155.0	155.9	157.2	157.1	158.4	159.0	159.4	259.6	259.5
<b>6</b>	158.4	158.6	158.5	159.4	158.9	159.8	160.3	261.1	261.2
<b>7</b>	160.8	161.0	161.7	162.4	162.4	162.7	163.0	263.6	263.7
<b>8</b>	162.9	163.6	164.4	164.7	165.0	165.8	165.9	266.6	266.3

**Figure 10**  
**WCPSS Math Scale Score Means, 1996-2004**

<b>Grade</b>	<b>1996</b>	<b>1997</b>	<b>1998</b>	<b>1999</b>	<b>2000</b>	<b>2001</b>	<b>2002</b>	<b>2003</b>	<b>2004</b>
<b>3</b>	144.7	145.3	144.9	145.3	146.8	253.7	254.6	255.6	255.2
<b>4</b>	151.4	152.6	154.0	155.0	155.9	259.1	259.9	261.4	261.5
<b>5</b>	158.2	159.5	160.1	161.9	163.0	263.8	264.9	265.7	265.9
<b>6</b>	164.9	165.1	166.1	167.1	167.8	266.1	267.1	268.1	268.4
<b>7</b>	170.7	171.8	172.5	173.7	174.2	270.5	271.8	271.2	271.6
<b>8</b>	175.5	175.4	177.4	177.5	178.4	273.7	274.6	274.6	274.5

\* Note: Math scale score ranges were recalculated by NCDPI in 2001 and Reading scales were recalculated in 2003. Comparisons to years prior to 2001 are not valid.

**DISAGGREGATED RESULTS FOR 2003-04**

WCPSS disaggregates EOG results for different groups of students. Groupings are based on gender, race and ethnicity, FRL status (free or reduced-price lunch), SWD classification (students with disabilities), LEP status (limited English proficient), and AG status (academically gifted). Figure 11 shows the percentage of all Grade 3-8 students who scored at or above grade-level in reading and math in 2003 and 2004. Figures 12 through 17 compare the performance of different sets of groups over time, and figures 18 and 19 at the end of the report show disaggregated results for all grade levels for 2003-04 compared to 2002-03.

**Figure 11**  
**Percentage of All Grade 3-8 Students At/Above Grade Level in Reading and Math**  
**For Selected Subgroups Over Two Years**

Category	Reading		Math	
	2003	2004	2003	2004
<b>All Students</b>	90.4	90.0	92.2	92.1
<b>Male</b>	88.9	88.1	91.5	91.3
<b>Female</b>	92.0	92.0	93.0	93.0
<b>White</b>	96.6	96.6	97.3	97.5
<b>Black</b>	78.3	78.4	81.3	81.5
<b>Asian</b>	96.4	96.5	97.8	98.3
<b>Hispanic/Latino</b>	78.2	76.1	87.2	85.4
<b>American Indian</b>	92.9	89.3	92.9	89.9
<b>Multi-Racial</b>	92.6	91.8	93.8	93.9
<b>Not FRL</b>	95.5	95.4	96.3	96.2
<b>FRL</b>	74.9	75.2	79.9	81.1
<b>Not SWD</b>	92.6	94.1	94.4	95.7
<b>SWD</b>	68.9	69.0	73.0	73.8
<b>Not LEP</b>	91.2	91.1	92.6	92.6
<b>LEP</b>	66.6	64.2	80.1	79.7
<b>AG</b>	100.0	100.0	100.0	100.0

**Results by Gender**

A higher percentage of female students met or exceeded grade-level standards than male students in both reading and math. The percentage of grade 3-8 female students who scored at or above grade level remained the same as the previous year in both subjects (92% in reading and 93% in math). The percentages for male students declined from 88.9% to 88.1% in reading, and from 91.5% to 91.3% in math.

**Results by Race and Ethnicity**

Overall, the percentage of White students, Black students, and Asian students meeting or exceeding grade-level standards in reading and math either remained the same or improved slightly when compared to the previous year. In contrast, the percentage of Hispanic-Latino students at or above grade level declined by about two percentage points in both subjects.

The gap in achievement on EOG exams by racial subgroups did not shrink in 2003-04. More than 96% of all White and Asian students in grades 3-8 scored at Level 3 or 4 on both the reading and math EOG exams. The gap between these groups and Black and Hispanic-Latino students was largest in reading (about 18 percentage points for Black students and 20 percentage points for Hispanic-Latino students); in math, the gap was smaller (about 16 points for Black students and 12 points for Hispanic-Latino students).

**Results for Students Receiving Free or Reduced-Price Lunch (FRL)**

Historically, students from economically disadvantaged families have scored lower as a group on EOG tests than students from middle- and upper-income families. WCPSS uses eligibility for the federal government's free or reduced-price lunch program as its measure of family income. Results in 2003-04 show that the percentage of all grade 3-8 students participating in FRL that met or exceeded grade level standards rose .3 percentage points in reading and 1.2 percentage points in math compared to last year's results. The achievement gap between this group of students and those not participating in FRL shrank somewhat, as the percentage of non-FRL students scoring at or above grade level declined by one-tenth of a percentage point in both reading and math.

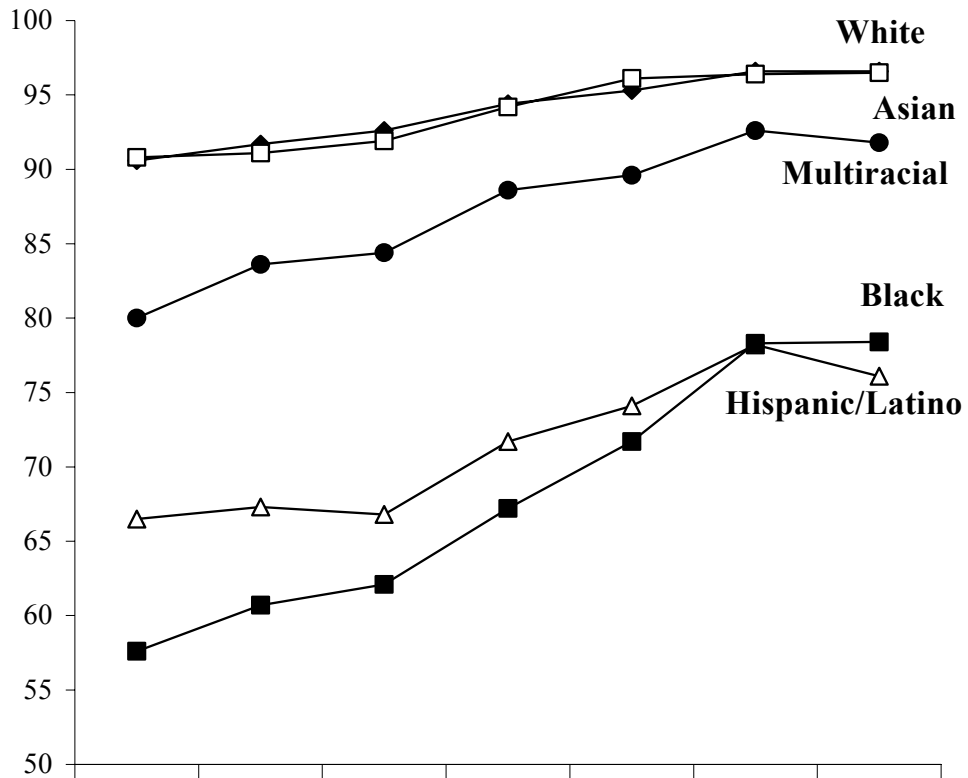
**Results for Students With Disabilities (SWD)**

The percentage of all grade 3-8 students with disabilities meeting or exceeding grade-level standards in reading rose from 68.9% in 2003 to 69.0% in 2004. In math, the percentage increased from 73.0% to 73.8. Despite these increases, the achievement gap between this group of students and all other students widened in 2004 as the percentage of students without disabilities who scored at or above grade level rose by more than one percentage point in both reading and math.

**Results for Students with Limited English Proficiency (LEP)**

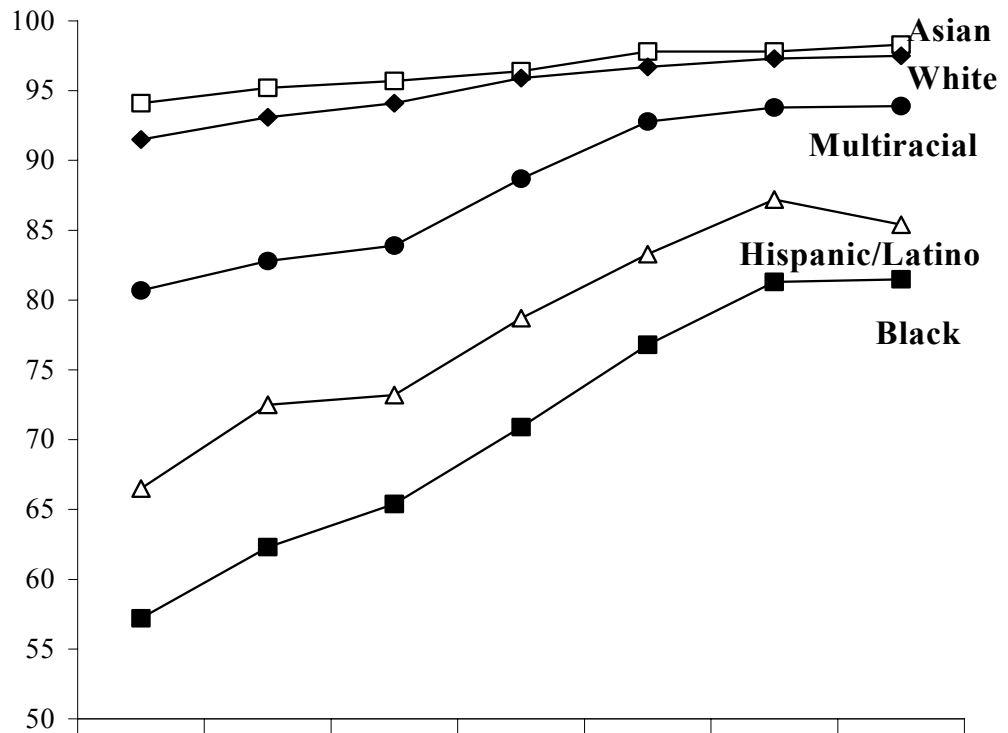
The percentage of all grade 3-8 students with limited English proficiency who scored at or above grade level declined by 2.2 percentage points in reading and by .4 percentage points in math. The achievement gap between this group and other students increased to 26.9 percentage points in reading and 12.9 percentage points in math.

**Figure 12**  
**Percentage of All Grade 3-8 Students at/above Grade Level**  
**in Reading by Race and Ethnicity, 1998-2004**



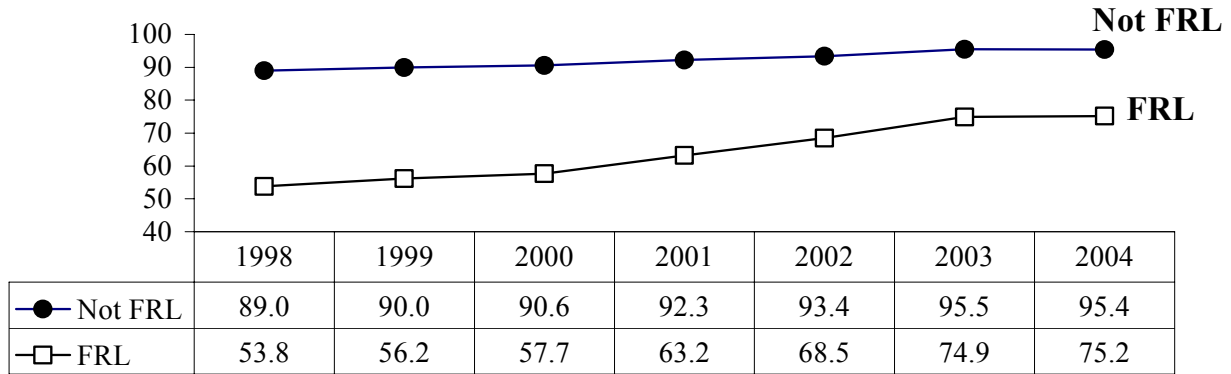
	1998	1999	2000	2001	2002	2003	2004
—◆— White	90.6	91.7	92.6	94.4	95.3	96.6	96.6
—□— Asian	90.8	91.1	91.9	94.2	96.1	96.4	96.5
—●— Multiracial	80.0	83.6	84.4	88.6	89.6	92.6	91.8
—△— Hispanic/Latino	66.5	67.3	66.8	71.7	74.1	78.2	76.1
—■— Black	57.6	60.7	62.1	67.2	71.7	78.3	78.4

**Figure 13**  
**Percentage of All Grade 3-8 Students at/above Grade Level**  
**in Math by Race and Ethnicity, 1998-2004**

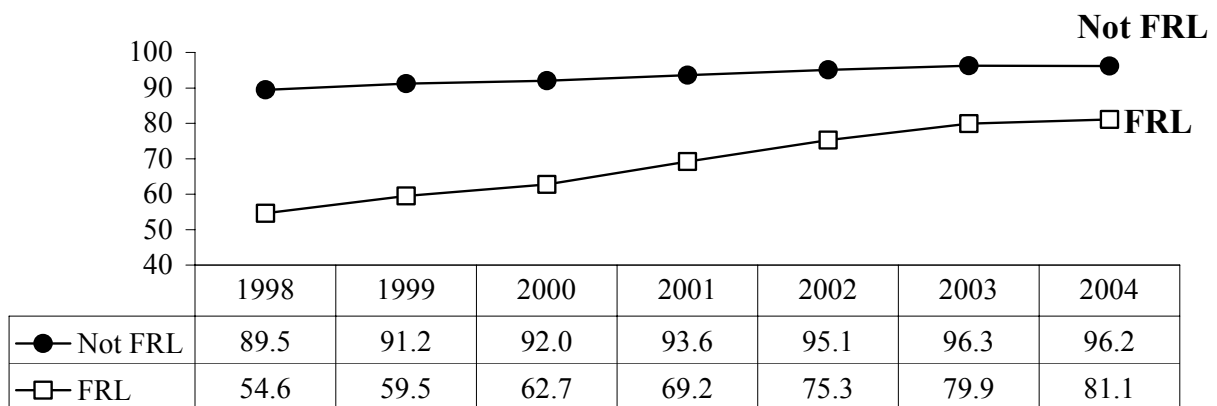


	1998	1999	2000	2001	2002	2003	2004
—□— Asian	94.1	95.2	95.7	96.4	97.8	97.8	98.3
—◆— White	91.5	93.1	94.1	95.9	96.7	97.3	97.5
—●— Multiracial	80.7	82.8	83.9	88.7	92.8	93.8	93.9
—△— Hispanic/Latino	66.5	72.5	73.2	78.7	83.3	87.2	85.4
—■— Black	57.2	62.3	65.4	70.9	76.8	81.3	81.5

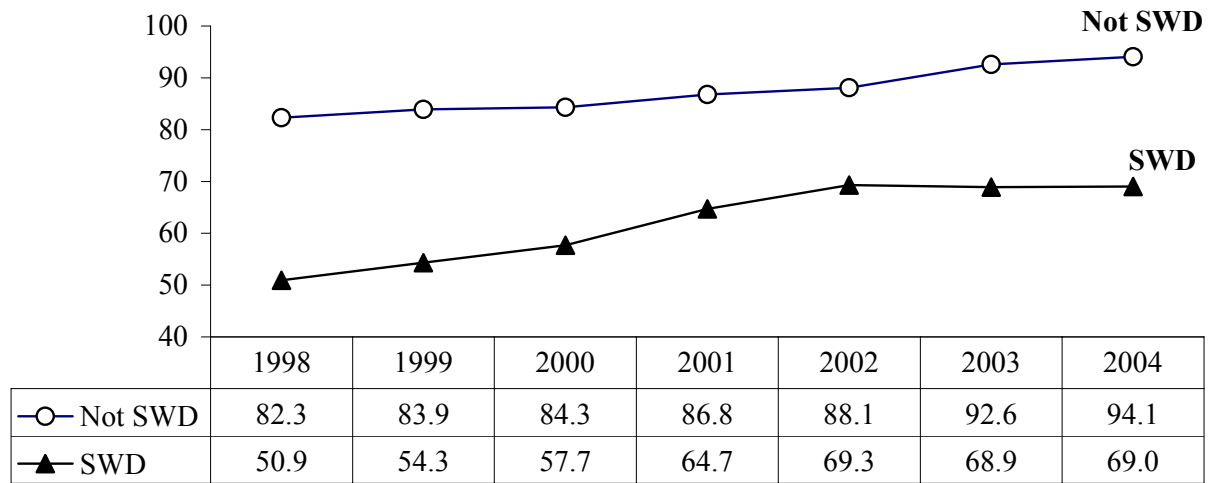
**Figure 14**  
**Percentage of All Grade 3-8 Students at/above Grade Level in Reading**  
**by FRL Status, 1998-2004**



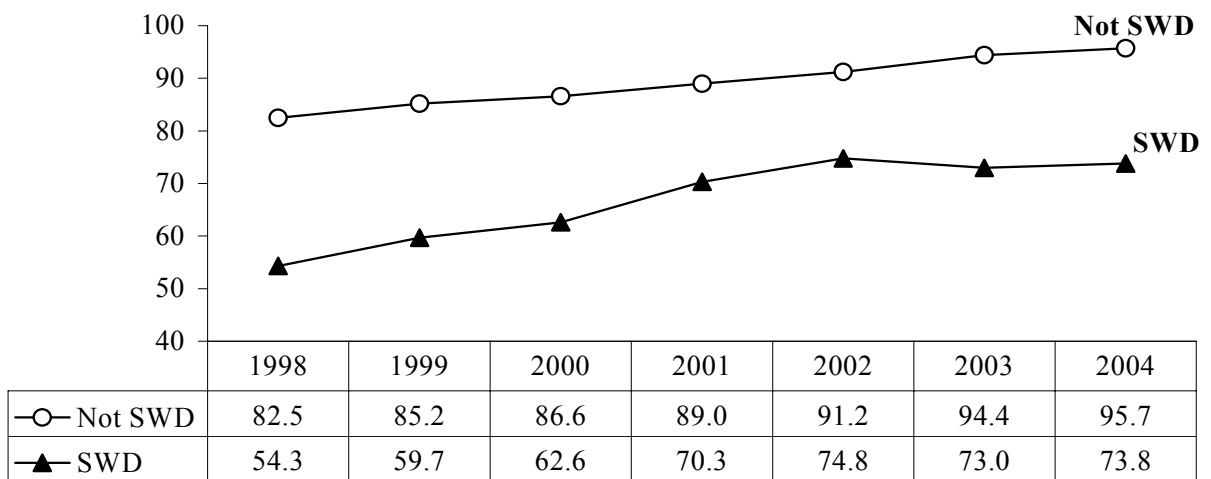
**Figure 15**  
**Percentage of All Grade 3-8 Students at/above Grade Level in Math**  
**by FRL Status, 1998-2004**



**Figure 16**  
**Percentage of All Grade 3-8 Students at/above Grade Level in Reading**  
**by Special Education Classification, 1998-2004**



**Figure 17**  
**Percentage of All Grade 3-8 Students at/above Grade Level in Math**  
**by Special Education Classification, 1998-2004**





**Figure 18**  
**Percentage of Students At/Above Grade Level In Reading**  
**by Grade for Selected Subgroups for 2 Years**

Category	Grades 3-8		Grade 3		Grade 4		Grade 5		Grade 6		Grade 7		Grade 8	
	2003	2004	2003	2004	2003	2004	2003	2004	2003	2004	2003	2004	2003	2004
<b>All Students</b>	90.4	90.0	89.0	88.1	90.0	89.5	93.5	93.5	87.7	87.1	90.3	90.2	92.2	91.6
<b>Male</b>	88.9	88.1	87.2	86.1	88.5	87.8	92.2	92.1	85.8	84.5	89.0	88.0	90.8	89.0
<b>Female</b>	92.0	92.0	91.0	90.3	91.4	91.3	94.8	94.9	89.7	89.7	91.6	92.4	93.7	93.4
<b>White</b>	96.6	96.6	96.2	95.4	96.3	96.1	98.1	97.9	95.8	96.1	96.2	96.9	97.1	97.3
<b>Black</b>	78.3	78.4	75.4	74.8	78.3	77.9	84.6	86.1	72.1	71.7	78.3	78.7	82.0	81.4
<b>Asian</b>	96.4	96.5	96.0	95.5	95.6	97.8	98.0	96.9	95.9	96.1	97.4	95.9	95.4	96.7
<b>Hispanic/Latino</b>	78.2	76.1	78.1	75.2	73.4	76.9	82.8	80.7	76.0	70.3	78.7	76.0	80.8	77.4
<b>American Indian</b>	92.9	89.3	87.9	88.9	95.2	89.3	94.4	90.0	87.5	76.2	95.2	100.0	100.0	88.5
<b>Multiracial</b>	92.6	91.8	88.9	88.7	93.5	92.7	96.5	96.8	89.2	87.4	94.5	90.1	95.7	96.2
<b>Not FRL</b>	95.5	95.4	94.7	94.5	95.6	95.3	97.4	97.3	93.5	94.2	95.7	94.9	96.0	96.1
<b>FRL</b>	74.9	75.2	73.8	72.2	74.0	75.3	81.8	83.1	70.2	67.9	72.8	76.4	77.6	76.6
<b>Not SWD</b>	92.6	94.1	92.3	92.2	90.7	93.7	95.1	96.9	89.9	91.5	93.1	94.6	94.7	96.1
<b>SWD</b>	68.9	69.0	68.0	66.7	71.2	67.0	76.5	76.7	61.5	64.1	66.8	68.8	70.2	70.2
<b>Not LEP</b>	91.2	91.1	89.8	89.4	90.9	90.7	94.2	94.3	88.8	88.2	90.8	91.1	93.0	92.5
<b>LEP</b>	66.6	64.2	73.9	66.3	65.3	69.7	69.0	73.2	51.5	53.6	68.8	56.0	61.6	56.4
<b>AG</b>	100.0	100.0	100.0	100.0	100.0	99.9	100.0	99.9	100.0	99.9	100.0	100.0	100.0	100.0

**Figure 19**  
**Percentage of Students At/Above Grade Level In Math**  
**by Grade for Selected Subgroups for 2 Years**

Category	Grades 3-8		Grade 3		Grade 4		Grade 5		Grade 6		Grade 7		Grade 8	
	2003	2004	2003	2004	2003	2004	2003	2004	2003	2004	2003	2004	2003	2004
<b>All Students</b>	92.2	92.1	93.5	92.1	96.3	96.4	95.6	95.7	91.7	92.3	87.9	88.5	88.6	88.1
<b>Male</b>	91.5	91.3	93.3	91.7	95.6	95.6	95.1	95.2	90.5	91.0	87.2	87.4	87.7	86.8
<b>Female</b>	93.0	93.0	93.7	92.4	97.0	97.2	96.1	96.2	93.0	93.6	88.7	89.6	89.4	89.3
<b>White</b>	97.3	97.5	98.2	97.9	98.9	99.0	98.8	98.4	97.6	97.9	95.2	96.3	95.6	95.7
<b>Black</b>	81.3	81.5	83.3	80.4	90.8	91.2	89.3	90.5	79.8	82.0	73.1	73.9	72.4	72.2
<b>Asian</b>	97.8	98.3	99.2	98.3	97.7	99.5	99.4	98.1	99.1	98.8	96.6	97.1	94.7	98.2
<b>Hispanic</b>	87.2	85.4	91.0	85.3	94.5	92.9	89.6	90.3	85.3	84.6	77.3	76.8	81.6	79.3
<b>American Indian</b>	92.9	89.9	90.9	92.6	100.0	96.4	94.4	100.0	91.7	85.7	90.5	85.2	91.7	80.8
<b>Multiracial</b>	93.8	93.9	93.2	93.4	95.9	97.6	97.1	96.8	92.8	92.1	91.4	88.6	92.1	93.5
<b>Not FRL</b>	96.3	96.2	97.2	96.6	98.6	98.7	98.3	98.2	96.1	96.4	94.3	94.0	93.6	93.5
<b>FRL</b>	79.9	81.1	83.6	80.9	89.6	90.7	87.8	88.8	78.3	81.2	67.9	72.4	69.4	69.8
<b>Not SWD</b>	94.4	95.7	95.8	94.7	97.5	98.4	96.8	98.4	94.3	96.1	91.1	93.5	90.8	93.4
<b>SWD</b>	73.0	73.8	78.8	78.1	85.7	85.6	83.9	82.2	70.0	72.8	60.0	64.1	62.0	61.8
<b>Not LEP</b>	92.6	92.6	93.7	92.8	96.4	96.7	96.0	96.0	92.4	92.9	88.5	89.2	89.2	88.6
<b>LEP</b>	80.1	79.7	88.6	80.6	90.4	90.5	82.8	87.4	69.3	75.1	60.5	64.1	74.0	65.6
<b>AG</b>	100.0	100.0	100.0	100.0	100.0	100.0	100.0	100.0	100.0	100.0	100.0	100.0	99.9	100.0

**Appendix A**  
**Percent of Elementary Students In Levels III and IV on EOG Tests for Three Years**

		Reading			Mathematics		
		2002	2003	2004	2002	2003	2004
304	<b>3rd Gd:</b>	93.6	96.7	94.9	93.6	99.3	96.4
<b>Adams Elementary</b>	<b>4th Gd:</b>	86.5	96.9	95.3	95.8	99.2	97.3
	<b>5th Gd:</b>	95.7	94.7	97.0	95.7	94.7	97.7
	<hr/>						
308	<b>3rd Gd:</b>	94.2	89.5	94.0	95.7	93.3	95.7
<b>Apex Elementary</b>	<b>4th Gd:</b>	95.1	96.1	93.8	97.9	97.6	96.4
	<b>5th Gd:</b>	98.7	94.4	97.8	98.1	95.1	99.3
	<hr/>						
320	<b>3rd Gd:</b>	96.4	75.9	89.6	94.6	80.5	92.2
<b>Aversboro Elementary</b>	<b>4th Gd:</b>	83.3	90.4	79.4	90.0	97.3	92.8
	<b>5th Gd:</b>	77.8	88.4	96.2	90.1	89.9	100.0
	<hr/>						
326	<b>3rd Gd:</b>	88.6	89.5	92.8	87.5	94.2	92.8
<b>Baileywick Road Elementary</b>	<b>4th Gd:</b>	95.2	90.4	91.7	100.0	93.6	94.1
	<b>5th Gd:</b>	92.6	95.6	92.1	94.7	97.8	95.5
	<hr/>						
327	<b>3rd Gd:</b>		91.9	88.5		93.6	93.4
<b>Ballentine Elementary</b>	<b>4th Gd:</b>		92.2	86.8		97.4	94.7
	<b>5th Gd:</b>		85.4	90.1		95.8	95.1
	<hr/>						
328	<b>3rd Gd:</b>	97.9	98.1	95.6	99.3	99.4	99.1
<b>A.V. Baucom Elementary</b>	<b>4th Gd:</b>	94.9	95.7	98.0	100.0	97.8	98.6
	<b>5th Gd:</b>	97.7	97.0	95.7	98.4	98.5	98.6
	<hr/>						
334	<b>3rd Gd:</b>	100.0	94.4	94.7	98.8	98.4	96.8
<b>Brassfield Elementary</b>	<b>4th Gd:</b>	98.5	94.9	99.0	100.0	97.5	100.0
	<b>5th Gd:</b>	94.3	100.0	98.0	94.3	97.2	97.0
	<hr/>						
336	<b>3rd Gd:</b>	74.1	76.1	74.2	71.6	83.0	83.3
<b>Brentwood Elementary</b>	<b>4th Gd:</b>	79.0	70.6	84.3	81.5	92.9	90.4
	<b>5th Gd:</b>	87.5	86.6	96.9	93.1	92.7	95.4
	<hr/>						
340	<b>3rd Gd:</b>	91.3	85.0	80.0	90.0	89.9	89.3
<b>Briarcliff Elementary</b>	<b>4th Gd:</b>	84.5	89.9	81.8	94.0	97.5	95.5
	<b>5th Gd:</b>	91.7	92.9	93.2	94.1	96.5	98.7
	<hr/>						
344	<b>3rd Gd:</b>	76.8	77.9	85.9	68.1	83.1	87.3
<b>Brooks Museums Magnet Elem</b>	<b>4th Gd:</b>	81.4	93.6	82.1	89.8	91.9	91.7
	<b>5th Gd:</b>	92.9	92.3	92.9	92.9	93.9	98.6
	<hr/>						

**Appendix A**  
**Percent of Elementary Students In Levels III and IV on EOG Tests for Three Years**

		Reading			Mathematics		
		2002	2003	2004	2002	2003	2004
352	<b>3rd Gd:</b>	75.4	83.0	83.8	74.6	84.9	79.4
<b>Bugg Elementary</b>	<b>4th Gd:</b>	84.3	87.3	84.5	90.0	100.0	93.1
	<b>5th Gd:</b>	89.5	92.1	89.7	85.5	100.0	93.1
<hr/>							
362	<b>3rd Gd:</b>	66.7	80.2	73.6	62.5	97.9	91.9
<b>Carver Elementary</b>	<b>4th Gd:</b>	69.6	76.1	80.4	86.3	97.7	94.6
	<b>5th Gd:</b>	82.1	86.9	83.5	90.5	89.7	90.1
<hr/>							
364	<b>3rd Gd:</b>	88.8	89.3	87.9	90.7	99.0	94.4
<b>Cary Elementary</b>	<b>4th Gd:</b>	79.7	92.1	94.6	97.4	98.9	99.1
	<b>5th Gd:</b>	87.3	95.4	92.2	91.8	97.2	92.2
<hr/>							
376	<b>3rd Gd:</b>	94.1	95.8	93.9	92.9	99.0	97.0
<b>A.B. Combs Elementary</b>	<b>4th Gd:</b>	98.6	96.8	91.8	98.6	99.0	98.0
	<b>5th Gd:</b>	88.5	98.7	97.0	94.9	96.2	98.0
<hr/>							
380	<b>3rd Gd:</b>	80.7	79.3	84.8	76.1	87.4	88.6
<b>Conn Elementary</b>	<b>4th Gd:</b>	76.7	74.4	88.0	87.7	91.5	91.6
	<b>5th Gd:</b>	77.3	80.5	90.0	86.7	90.9	96.3
<hr/>							
384	<b>3rd Gd:</b>	82.2	80.5	83.9	78.9	92.9	93.1
<b>Creech Road Elementary</b>	<b>4th Gd:</b>	63.9	82.9	83.8	96.3	94.6	95.5
	<b>5th Gd:</b>	73.5	84.0	90.6	81.9	90.4	94.0
<hr/>							
390	<b>3rd Gd:</b>	98.7	100.0	98.1	97.5	98.9	99.4
<b>Davis Drive Elementary</b>	<b>4th Gd:</b>	96.6	98.8	99.4	98.9	100.0	99.4
	<b>5th Gd:</b>	99.5	99.5	97.7	100.0	100.0	99.4
<hr/>							
393	<b>3rd Gd:</b>	92.9	90.8	93.2	90.9	96.6	97.7
<b>Dillard Drive Elementary</b>	<b>4th Gd:</b>	91.5	88.6	91.7	95.7	94.3	97.2
	<b>5th Gd:</b>	85.9	95.4	99.0	84.9	96.3	98.0
<hr/>							
396	<b>3rd Gd:</b>	79.4	88.1	88.4	80.9	96.4	92.8
<b>Douglas Elementary</b>	<b>4th Gd:</b>	90.8	83.6	91.1	98.5	95.9	97.5
	<b>5th Gd:</b>	90.5	98.6	90.9	89.2	95.8	95.5
<hr/>							
398	<b>3rd Gd:</b>	93.1	92.7	91.6	93.7	96.8	95.2
<b>Durant Road Elementary</b>	<b>4th Gd:</b>	95.1	95.6	93.2	97.8	99.5	97.6
	<b>5th Gd:</b>	93.6	99.0	94.8	95.4	98.4	96.3

**Appendix A**  
**Percent of Elementary Students In Levels III and IV on EOG Tests for Three Years**

		Reading			Mathematics		
		2002	2003	2004	2002	2003	2004
414	<b>3rd Gd:</b>	88.2	88.2	85.5	90.2	94.1	94.8
<b>Farmington Woods Elementary</b>	<b>4th Gd:</b>	85.5	90.8	94.6	94.6	96.4	99.1
	<b>5th Gd:</b>	91.3	94.5	92.7	93.6	97.3	91.7
	<hr/>						
415	<b>3rd Gd:</b>	80.7	82.2	81.0	82.8	88.1	88.6
<b>Fox Road Elementary</b>	<b>4th Gd:</b>	93.0	85.0	88.0	98.4	92.5	95.8
	<b>5th Gd:</b>	90.7	90.2	89.5	89.3	94.8	93.2
	<hr/>						
416	<b>3rd Gd:</b>	87.3	87.2	84.1	79.0	85.9	79.7
<b>Fuller Elementary</b>	<b>4th Gd:</b>	86.7	85.7	88.3	91.7	95.2	92.2
	<b>5th Gd:</b>	94.1	95.7	87.5	92.8	95.7	88.6
	<hr/>						
420	<b>3rd Gd:</b>	83.7	88.5	82.5	87.7	89.8	86.0
<b>Fuquay-Varina Elementary</b>	<b>4th Gd:</b>	82.2	84.6	84.0	89.9	96.2	96.0
	<b>5th Gd:</b>	84.7	83.8	93.1	90.4	89.9	92.0
	<hr/>						
439	<b>3rd Gd:</b>	99.1	99.1	96.2	98.1	100.0	98.7
<b>Green Hope Elementary</b>	<b>4th Gd:</b>	97.9	99.1	98.5	100.0	100.0	100.0
	<b>5th Gd:</b>	99.1	100.0	100.0	100.0	100.0	100.0
	<hr/>						
440	<b>3rd Gd:</b>	95.3	90.8	88.1	92.9	95.0	94.1
<b>Green Elementary</b>	<b>4th Gd:</b>	92.9	95.9	86.6	97.3	96.8	92.9
	<b>5th Gd:</b>	96.8	96.4	92.5	96.8	100.0	92.5
	<hr/>						
442	<b>3rd Gd:</b>	87.9	93.1	87.6	87.1	94.1	90.5
<b>Hilburn Drive Elementary</b>	<b>4th Gd:</b>	89.9	91.3	94.8	92.1	97.6	98.3
	<b>5th Gd:</b>	97.4	95.3	95.5	99.1	97.7	99.3
	<hr/>						
446	<b>3rd Gd:</b>	82.4	82.0	63.6	84.6	92.1	75.7
<b>Hodge Road Elementary</b>	<b>4th Gd:</b>	82.0	81.2	81.0	98.4	90.3	96.0
	<b>5th Gd:</b>	92.2	90.4	80.3	87.4	91.3	93.4
	<hr/>						
447	<b>3rd Gd:</b>	85.7	82.6	81.4	90.8	87.9	91.8
<b>Holly Springs Elementary</b>	<b>4th Gd:</b>	83.2	87.2	89.4	97.0	93.3	97.7
	<b>5th Gd:</b>	91.6	89.3	90.9	95.1	93.6	97.7
	<hr/>						
448	<b>3rd Gd:</b>	77.6	90.7	91.7	78.6	91.7	88.0
<b>Hunter Elementary</b>	<b>4th Gd:</b>	90.1	92.3	89.6	95.5	98.1	94.8
	<b>5th Gd:</b>	89.4	97.5	96.2	94.3	97.5	98.1
	<hr/>						

**Appendix A**  
**Percent of Elementary Students In Levels III and IV on EOG Tests for Three Years**

		Reading			Mathematics		
		2002	2003	2004	2002	2003	2004
449	<b>3rd Gd:</b>			82.6			94.6
<b>Holly Ridge Elementary School</b>	<b>4th Gd:</b>			88.7			95.8
	<b>5th Gd:</b>			88.7			88.7
<hr/>							
452	<b>3rd Gd:</b>	85.7	87.3	95.6	92.9	86.1	94.5
<b>Jeffreys Grove Elementary</b>	<b>4th Gd:</b>	82.1	84.3	87.7	96.4	96.3	96.3
	<b>5th Gd:</b>	93.1	86.6	93.3	98.0	94.9	97.1
<hr/>							
454	<b>3rd Gd:</b>	93.2	94.2	90.6	92.6	95.5	97.7
<b>Heritage Elementary</b>	<b>4th Gd:</b>	89.7	94.6	95.9	98.7	97.6	97.1
	<b>5th Gd:</b>	93.2	94.9	97.0	98.1	98.7	97.0
<hr/>							
456	<b>3rd Gd:</b>	79.6	74.2	78.5	70.4	90.9	86.1
<b>J. Y. Joyner Elementary</b>	<b>4th Gd:</b>	79.0	86.5	85.7	82.7	92.1	95.2
	<b>5th Gd:</b>	82.2	84.0	88.6	82.2	86.7	91.1
<hr/>							
460	<b>3rd Gd:</b>	93.8	97.4	94.8	93.8	100.0	94.8
<b>Kingswood Elementary</b>	<b>4th Gd:</b>	87.5	91.2	95.5	97.9	100.0	100.0
	<b>5th Gd:</b>	100.0	100.0	100.0	100.0	100.0	100.0
<hr/>							
464	<b>3rd Gd:</b>	65.7	91.2	82.6	67.7	98.3	88.7
<b>Knightdale Elementary</b>	<b>4th Gd:</b>	69.8	88.4	85.6	88.9	98.1	96.6
	<b>5th Gd:</b>	80.0	88.8	93.3	83.2	94.8	95.6
<hr/>							
468	<b>3rd Gd:</b>	85.0	93.9	94.7	90.0	95.5	96.1
<b>Lacy Elementary</b>	<b>4th Gd:</b>	94.9	89.3	87.5	97.5	89.3	94.5
	<b>5th Gd:</b>	94.1	97.3	91.3	97.6	100.0	92.5
<hr/>							
469	<b>3rd Gd:</b>	93.1	93.8	95.0	97.4	96.4	95.9
<b>Leesville Road Elementary</b>	<b>4th Gd:</b>	96.3	97.7	91.5	97.2	99.2	100.0
	<b>5th Gd:</b>	96.4	97.5	96.0	96.5	96.6	96.7
<hr/>							
470	<b>3rd Gd:</b>	83.3	92.2	93.3	83.3	92.2	98.9
<b>Lead Mine Elementary</b>	<b>4th Gd:</b>	88.4	92.3	86.7	95.8	94.9	96.7
	<b>5th Gd:</b>	98.0	95.6	97.1	96.9	98.9	100.0
<hr/>							
476	<b>3rd Gd:</b>	93.0	84.9	88.5	92.0	85.9	90.6
<b>Lincoln Heights Elementary</b>	<b>4th Gd:</b>	82.3	88.5	85.9	88.7	93.8	96.7
	<b>5th Gd:</b>	95.5	90.9	93.4	89.6	100.0	94.5

**Appendix A**  
**Percent of Elementary Students In Levels III and IV on EOG Tests for Three Years**

		Reading			Mathematics		
		2002	2003	2004	2002	2003	2004
480	<b>3rd Gd:</b>	92.7	93.7	95.6	93.8	97.4	97.4
<b>Lockhart Elementary</b>	<b>4th Gd:</b>	93.1	96.2	95.5	98.0	99.1	99.1
	<b>5th Gd:</b>	96.9	97.9	99.1	95.0	99.0	100.0
	<hr/>						
488	<b>3rd Gd:</b>	85.0	77.6	81.0	76.5	86.8	90.0
<b>Lynn Road Elementary</b>	<b>4th Gd:</b>	76.3	87.7	85.9	88.2	91.8	85.9
	<b>5th Gd:</b>	87.1	81.9	85.0	87.1	85.5	87.1
	<hr/>						
494	<b>3rd Gd:</b>	89.7	91.6	90.5	89.9	94.0	89.5
<b>Middle Creek Elementary</b>	<b>4th Gd:</b>	85.5	98.0	93.5	88.2	98.0	100.0
	<b>5th Gd:</b>	89.9	92.3	96.2	97.1	98.7	99.1
	<hr/>						
496	<b>3rd Gd:</b>	66.7	75.0	73.0	67.0	89.4	82.8
<b>Millbrook Elementary Magnet</b>	<b>4th Gd:</b>	78.9	81.4	73.5	86.8	94.3	97.4
	<b>5th Gd:</b>	91.8	88.0	87.2	85.2	96.0	91.9
	<hr/>						
504	<b>3rd Gd:</b>	96.5	97.6	96.1	97.1	100.0	98.7
<b>Morrisville Elementary</b>	<b>4th Gd:</b>	95.1	98.2	98.8	98.8	99.4	100.0
	<b>5th Gd:</b>	93.5	98.1	99.4	97.4	99.4	100.0
	<hr/>						
516	<b>3rd Gd:</b>	94.3	91.1	88.1	87.9	94.6	95.4
<b>North Ridge Elementary</b>	<b>4th Gd:</b>	95.9	96.7	93.4	99.0	95.9	99.1
	<b>5th Gd:</b>	98.0	94.0	96.6	97.9	95.7	100.0
	<hr/>						
520	<b>3rd Gd:</b>	93.0	94.1	90.2	94.8	96.6	95.1
<b>Northwoods Elementary</b>	<b>4th Gd:</b>	89.5	99.2	89.1	96.0	100.0	97.2
	<b>5th Gd:</b>	98.9	97.1	98.0	97.9	95.7	99.3
	<hr/>						
522	<b>3rd Gd:</b>	95.1	96.4	99.3	97.5	94.6	98.0
<b>Oak Grove Elementary</b>	<b>4th Gd:</b>	96.4	97.0	94.7	98.8	98.2	98.8
	<b>5th Gd:</b>	98.2	97.7	99.4	98.8	98.3	100.0
	<hr/>						
523	<b>3rd Gd:</b>	92.2	96.5	96.1	94.0	99.3	98.7
<b>Olive Chapel Elementary</b>	<b>4th Gd:</b>	92.7	98.6	94.9	97.1	100.0	98.6
	<b>5th Gd:</b>	96.4	97.6	98.5	97.1	97.6	99.3
	<hr/>						
524	<b>3rd Gd:</b>	81.4	92.3	88.9	79.1	94.2	88.9
<b>Olds Elementary</b>	<b>4th Gd:</b>	92.5	88.6	93.3	92.9	97.7	93.3
	<b>5th Gd:</b>	95.7	86.7	86.3	97.9	88.9	92.2
	<hr/>						

**Appendix A**  
**Percent of Elementary Students In Levels III and IV on EOG Tests for Three Years**

		Reading			Mathematics		
		2002	2003	2004	2002	2003	2004
525 <b>Partnership Primary</b>	<b>3rd Gd:</b>	78.9	81.8	85.4	84.9	89.1	85.4
	<b>4th Gd:</b>	88.9	87.0	90.0	100.0	97.8	100.0
	<b>5th Gd:</b>	82.9	91.1	98.0	94.3	97.8	94.1
530 <b>Penny Road Elementary</b>	<b>3rd Gd:</b>	84.1	88.1	97.8	90.7	95.1	97.8
	<b>4th Gd:</b>	84.2	93.0	91.1	90.4	100.0	97.0
	<b>5th Gd:</b>	96.7	96.5	97.3	95.6	94.9	99.1
531 <b>Pleasant Union Elementary</b>	<b>3rd Gd:</b>	90.1	99.1	95.5	88.1	98.1	96.6
	<b>4th Gd:</b>	93.1	95.7	96.0	98.0	100.0	98.0
	<b>5th Gd:</b>	97.3	96.8	98.8	94.5	97.9	98.8
532 <b>Poe Elementary</b>	<b>3rd Gd:</b>	84.3	76.7	85.9	84.3	88.3	87.3
	<b>4th Gd:</b>	88.2	95.9	82.8	96.1	95.9	95.3
	<b>5th Gd:</b>	95.4	95.9	100.0	97.7	95.9	100.0
536 <b>Powell Elementary</b>	<b>3rd Gd:</b>	81.2	85.1	82.1	78.6	88.8	88.1
	<b>4th Gd:</b>	81.4	75.0	82.2	94.2	80.7	94.1
	<b>5th Gd:</b>	89.9	92.0	87.4	87.8	93.2	89.7
540 <b>Rand Road Elementary</b>	<b>3rd Gd:</b>	69.0	87.7	81.5	73.2	97.3	90.1
	<b>4th Gd:</b>	82.7	75.7	88.9	97.4	94.3	96.3
	<b>5th Gd:</b>	93.7	92.2	89.7	94.7	93.5	96.2
542 <b>Reedy Creek Elementary</b>	<b>3rd Gd:</b>	73.2	85.3	77.9	75.9	95.1	82.8
	<b>4th Gd:</b>	83.9	81.6	88.6	87.5	91.3	95.6
	<b>5th Gd:</b>	89.4	92.7	88.2	91.5	95.2	94.1
544 <b>Rolesville Elementary</b>	<b>3rd Gd:</b>	81.6	91.8	90.9	79.6	94.6	93.9
	<b>4th Gd:</b>	80.6	85.3	86.6	92.5	97.4	92.0
	<b>5th Gd:</b>	86.4	98.8	91.3	88.5	96.3	92.9
548 <b>Root Elementary</b>	<b>3rd Gd:</b>	91.4	84.4	80.8	91.4	87.0	85.9
	<b>4th Gd:</b>	98.4	91.4	91.7	98.4	96.6	93.1
	<b>5th Gd:</b>	87.3	89.2	92.8	93.6	87.7	95.7
550 <b>Salem Elementary</b>	<b>3rd Gd:</b>	92.0	91.9	89.1	95.4	94.6	94.1
	<b>4th Gd:</b>	91.4	97.8	95.0	96.2	100.0	97.5
	<b>5th Gd:</b>	94.9	99.0	99.0	93.7	97.1	99.0



**Appendix A**  
**Percent of Elementary Students In Levels III and IV on EOG Tests for Three Years**

		Reading			Mathematics		
		2002	2003	2004	2002	2003	2004
560 Fred A. Smith Elementary	<b>3rd Gd:</b>	82.2	78.2	80.3	72.0	92.3	88.2
	<b>4th Gd:</b>	72.8	78.7	84.4	90.6	97.8	96.1
	<b>5th Gd:</b>	84.4	83.0	90.8	83.0	92.1	93.1
564 Stough Elementary	<b>3rd Gd:</b>	92.1	86.7	88.2	94.7	89.3	92.2
	<b>4th Gd:</b>	95.2	87.8	78.8	92.9	97.6	93.8
	<b>5th Gd:</b>	93.4	93.3	89.6	97.4	96.7	94.8
568 Swift Creek Elementary	<b>3rd Gd:</b>	90.1	86.8	86.5	88.7	94.1	90.5
	<b>4th Gd:</b>	85.1	89.6	92.4	92.1	97.0	98.5
	<b>5th Gd:</b>	92.8	93.0	94.1	95.2	97.7	97.1
570 Timber Drive Elementary	<b>3rd Gd:</b>	90.5	95.9	88.5	91.8	96.5	90.8
	<b>4th Gd:</b>	93.2	91.6	91.3	99.3	100.0	97.7
	<b>5th Gd:</b>	94.1	93.8	93.8	98.7	95.3	96.9
572 Underwood Elementary	<b>3rd Gd:</b>	76.2	71.2	78.3	73.2	75.0	75.0
	<b>4th Gd:</b>	75.5	76.9	77.8	81.1	89.7	90.7
	<b>5th Gd:</b>	81.3	94.7	91.5	83.3	96.5	85.1
576 Vance Elementary	<b>3rd Gd:</b>	80.9	84.9	85.3	82.6	92.3	88.5
	<b>4th Gd:</b>	86.9	80.9	88.1	97.6	89.7	98.5
	<b>5th Gd:</b>	95.9	93.4	83.6	97.3	95.6	90.4
580 Vandora Springs Elementary	<b>3rd Gd:</b>	78.7	85.5	85.7	86.8	90.7	100.0
	<b>4th Gd:</b>	83.5	81.5	94.2	93.7	95.1	100.0
	<b>5th Gd:</b>	86.5	88.1	95.5	94.7	86.9	94.0
584 Wake Forest Elementary	<b>3rd Gd:</b>	85.8	81.9	83.4	74.2	85.9	84.6
	<b>4th Gd:</b>	84.7	80.4	84.1	92.0	93.5	94.7
	<b>5th Gd:</b>	93.2	94.9	91.0	89.8	94.9	94.2
593 Wakefield Elementary	<b>3rd Gd:</b>	89.5	91.8	89.0	88.6	98.0	96.6
	<b>4th Gd:</b>	88.8	92.2	91.3	94.4	99.2	98.8
	<b>5th Gd:</b>	99.1	97.7	95.7	94.7	96.9	97.8
596 Washington Elementary	<b>3rd Gd:</b>	86.5	90.1	94.3	84.4	93.4	94.3
	<b>4th Gd:</b>	92.0	90.6	88.1	95.0	100.0	100.0
	<b>5th Gd:</b>	91.4	94.2	94.3	92.5	99.0	99.1

**Appendix A**  
**Percent of Elementary Students In Levels III and IV on EOG Tests for Three Years**

		Reading			Mathematics		
		2002	2003	2004	2002	2003	2004
598	<b>3rd Gd:</b>	93.9	90.8	92.6	91.4	94.1	92.6
<b>Weatherstone Elementary</b>	<b>4th Gd:</b>	94.2	91.3	90.8	99.0	97.7	94.7
	<b>5th Gd:</b>	99.0	99.1	90.1	99.0	100.0	90.8
	<hr/>						
600	<b>3rd Gd:</b>	88.6	90.0	82.2	86.5	91.0	89.8
<b>Wendell Elementary</b>	<b>4th Gd:</b>	89.9	85.3	84.9	96.7	95.8	96.2
	<b>5th Gd:</b>	90.0	92.2	87.5	91.1	96.7	91.7
	<hr/>						
606	<b>3rd Gd:</b>	89.6	90.2	87.6	87.6	97.1	92.3
<b>West Lake Elementary</b>	<b>4th Gd:</b>	89.1	91.6	92.7	94.5	96.7	99.0
	<b>5th Gd:</b>	94.8	95.5	96.2	97.7	97.3	97.7
	<hr/>						
616	<b>3rd Gd:</b>	88.0	89.4	83.7	86.9	93.4	87.2
<b>Wilburn Elementary</b>	<b>4th Gd:</b>	82.1	92.9	86.8	92.6	96.8	95.0
	<b>5th Gd:</b>	93.4	96.9	94.8	93.6	96.3	96.1
	<hr/>						
618	<b>3rd Gd:</b>	89.6	90.2	92.3	82.4	92.6	94.6
<b>Wildwood Forest Elementary</b>	<b>4th Gd:</b>	82.9	87.4	85.0	91.1	96.4	96.4
	<b>5th Gd:</b>	93.5	91.7	93.9	89.7	95.8	95.6
	<hr/>						
620	<b>3rd Gd:</b>	97.2	88.3	94.6	94.4	88.3	80.0
<b>Wiley Elementary</b>	<b>4th Gd:</b>	86.0	94.4	84.4	98.0	93.0	87.5
	<b>5th Gd:</b>	81.8	86.5	91.2	87.3	90.4	88.2
	<hr/>						
624	<b>3rd Gd:</b>	93.8	88.3	91.7	93.8	93.3	95.4
<b>Willow Springs Elementary</b>	<b>4th Gd:</b>	87.8	87.4	87.5	96.4	95.2	95.0
	<b>5th Gd:</b>	88.0	96.6	90.3	93.2	95.5	95.6
	<hr/>						
626	<b>3rd Gd:</b>	88.2	82.8	92.8	80.9	94.8	97.1
<b>Yates Mill Elementary</b>	<b>4th Gd:</b>	81.5	85.5	83.3	88.9	95.7	93.9
	<b>5th Gd:</b>	89.5	94.2	92.0	90.8	96.2	92.0
	<hr/>						
628	<b>3rd Gd:</b>	86.5	84.6	87.5	91.9	89.1	90.6
<b>York Elementary</b>	<b>4th Gd:</b>	81.3	87.5	88.5	90.6	88.5	93.3
	<b>5th Gd:</b>	93.4	85.2	89.8	96.7	90.2	91.5
	<hr/>						
632	<b>3rd Gd:</b>	79.8	83.2	81.1	75.0	90.7	84.9
<b>Zebulon Elementary</b>	<b>4th Gd:</b>	80.0	77.1	78.3	88.2	89.0	90.6
	<b>5th Gd:</b>	89.4	85.5	89.8	95.3	88.9	90.9
	<hr/>						

**Appendix B**  
**Percent of Middle School Students In Levels III and IV on EOG Tests for Three Years**

		Reading			Mathematics		
		2002	2003	2004	2002	2003	2004
312	<b>6th Gd:</b>	86.4	93.1	93.8	94.1	94.0	96.5
<b>Apex Middle</b>	<b>7th Gd:</b>	89.2	92.8	94.0	91.7	92.0	92.8
	<b>8th Gd:</b>	93.9	94.3	93.5	93.0	93.4	91.5
	<hr/>						
356	<b>6th Gd:</b>	74.9	86.7	85.6	86.6	88.9	89.9
<b>Carnage Middle</b>	<b>7th Gd:</b>	77.1	88.9	89.6	81.7	86.7	84.8
	<b>8th Gd:</b>	88.1	88.5	91.8	84.2	81.7	89.4
	<hr/>						
360	<b>6th Gd:</b>	81.1	80.4	74.8	91.3	88.1	85.4
<b>Carroll Middle</b>	<b>7th Gd:</b>	81.6	81.9	84.3	88.3	80.3	86.2
	<b>8th Gd:</b>	88.7	90.3	83.2	83.9	84.7	79.9
	<hr/>						
370	<b>6th Gd:</b>	76.3	88.3	88.6	86.3	93.3	95.4
<b>Centennial Campus Middle</b>	<b>7th Gd:</b>	86.5	83.5	90.3	87.5	84.6	93.8
	<b>8th Gd:</b>	86.5	88.7	88.4	79.7	81.4	81.9
	<hr/>						
388	<b>6th Gd:</b>	78.8	84.4	83.9	82.3	87.5	88.9
<b>Daniels Middle School</b>	<b>7th Gd:</b>	88.3	88.3	88.8	88.0	83.1	86.1
	<b>8th Gd:</b>	91.8	90.3	88.7	88.1	87.3	86.2
	<hr/>						
391	<b>6th Gd:</b>	92.4	95.3	96.2	98.5	95.8	98.7
<b>Davis Drive Middle</b>	<b>7th Gd:</b>	95.1	95.8	95.9	97.4	95.3	95.4
	<b>8th Gd:</b>	96.8	97.3	96.2	94.1	97.3	96.2
	<hr/>						
394	<b>6th Gd:</b>	83.2	90.7	86.3	90.3	93.9	92.1
<b>Dillard Drive Middle</b>	<b>7th Gd:</b>	92.8	94.4	94.4	94.9	92.6	92.8
	<b>8th Gd:</b>	94.6	94.3	97.1	91.3	92.3	95.0
	<hr/>						
399	<b>6th Gd:</b>	91.1	89.7	92.0	96.8	93.7	95.4
<b>Durant Road Middle</b>	<b>7th Gd:</b>	95.3	93.4	93.4	95.8	92.5	93.2
	<b>8th Gd:</b>	96.3	96.3	95.6	93.7	94.5	94.3
	<hr/>						
400	<b>6th Gd:</b>	79.3	80.9	86.4	90.4	87.0	91.8
<b>Reedy Creek Middle</b>	<b>7th Gd:</b>	83.5	88.4	83.9	89.7	90.5	83.9
	<b>8th Gd:</b>	90.0	91.2	88.9	89.6	91.9	88.9
	<hr/>						
404	<b>6th Gd:</b>	63.6	75.7	80.5	78.9	87.8	88.0
<b>East Garner Magnet Middle</b>	<b>7th Gd:</b>	82.5	83.4	79.9	87.8	81.9	73.9
	<b>8th Gd:</b>	84.2	88.4	92.9	79.2	84.4	83.2
	<hr/>						
408	<b>6th Gd:</b>	74.6	82.1	79.5	86.1	88.5	86.0
<b>East Millbrook Middle School</b>	<b>7th Gd:</b>	80.7	87.5	84.1	84.9	84.8	77.8
	<b>8th Gd:</b>	93.2	93.5	90.5	86.0	83.9	80.8
	<hr/>						

**Appendix B**  
**Percent of Middle School Students In Levels III and IV on EOG Tests for Three Years**

		Reading			Mathematics		
		2002	2003	2004	2002	2003	2004
410	<b>6th Gd:</b>	74.1	76.9	78.6	80.7	87.1	89.8
<b>East Wake Middle</b>	<b>7th Gd:</b>	79.5	84.6	82.9	83.3	81.0	81.1
	<b>8th Gd:</b>	79.5	88.6	84.0	77.1	82.7	82.4
<hr/>							
424	<b>6th Gd:</b>	78.2	84.7	82.6	87.0	91.1	91.5
<b>Fuquay Varina Middle School</b>	<b>7th Gd:</b>	78.5	85.3	84.9	83.1	80.3	84.5
	<b>8th Gd:</b>	91.1	89.4	91.6	82.8	83.8	83.3
<hr/>							
444	<b>6th Gd:</b>			95.4			97.4
<b>Heritage Middle School</b>	<b>7th Gd:</b>						
	<b>8th Gd:</b>						
<hr/>							
450	<b>6th Gd:</b>			82.8			90.8
<b>Holly Ridge Middle</b>	<b>7th Gd:</b>			89.9			88.2
	<b>8th Gd:</b>			89.9			83.2
<hr/>							
471	<b>6th Gd:</b>	84.5	91.3	93.1	90.1	93.4	93.6
<b>Leesville Road Middle</b>	<b>7th Gd:</b>	90.7	93.7	93.4	93.0	91.1	91.7
	<b>8th Gd:</b>	93.9	94.8	91.6	93.6	89.7	88.7
<hr/>							
472	<b>6th Gd:</b>	88.8	96.2	90.4	92.9	97.1	94.4
<b>Ligon GT Magnet Middle School</b>	<b>7th Gd:</b>	94.3	95.2	94.9	97.4	90.8	91.8
	<b>8th Gd:</b>	96.0	93.9	94.5	93.1	92.4	90.6
<hr/>							
484	<b>6th Gd:</b>	97.4	95.9	94.3	97.7	97.1	95.3
<b>Lufkin Road Middle</b>	<b>7th Gd:</b>	93.8	98.1	96.9	97.1	97.5	97.2
	<b>8th Gd:</b>	97.9	95.2	96.4	97.5	95.9	95.4
<hr/>							
492	<b>6th Gd:</b>	84.1	88.6	89.6	90.3	89.8	95.1
<b>Martin Middle</b>	<b>7th Gd:</b>	85.5	92.3	92.1	88.3	89.9	86.4
	<b>8th Gd:</b>	90.8	93.3	93.1	87.8	89.4	91.6
<hr/>							
506	<b>6th Gd:</b>		84.3	85.8		86.1	89.7
<b>Moore Squ Museum Magnet Mid</b>	<b>7th Gd:</b>		92.8	89.5		82.9	83.0
	<b>8th Gd:</b>			86.2			73.4
<hr/>							
512	<b>6th Gd:</b>	73.4	73.7	74.7	87.5	86.1	85.9
<b>North Garner Middle</b>	<b>7th Gd:</b>	70.6	83.6	80.9	85.9	86.6	85.2
	<b>8th Gd:</b>	80.9	80.8	84.7	77.9	78.1	79.4
<hr/>							
592	<b>6th Gd:</b>	80.6	86.2	80.8	88.3	90.1	91.3
<b>Wake Forest-Rolesville Middle</b>	<b>7th Gd:</b>	81.0	85.6	88.5	89.0	81.0	88.2
	<b>8th Gd:</b>	86.2	87.9	87.5	79.7	83.9	83.5

**Appendix B**  
**Percent of Middle School Students In Levels III and IV on EOG Tests for Three Years**

		Reading			Mathematics		
		2002	2003	2004	2002	2003	2004
594	<b>6th Gd:</b>	87.8	94.4	93.7	94.7	97.1	95.5
<b>Wakefield Middle</b>	<b>7th Gd:</b>	89.3	96.2	95.9	93.3	92.3	93.1
	<b>8th Gd:</b>	92.2	93.7	98.0	88.5	89.1	95.3
<hr/>							
604	<b>6th Gd:</b>	91.4	95.8	94.6	95.6	95.6	97.0
<b>West Cary Middle</b>	<b>7th Gd:</b>	89.1	94.8	96.2	92.1	92.2	95.9
	<b>8th Gd:</b>	94.8	95.1	97.2	93.5	91.7	95.0
<hr/>							
607	<b>6th Gd:</b>	91.3	93.7	93.4	97.0	96.4	96.7
<b>West Lake Middle</b>	<b>7th Gd:</b>	94.5	95.0	95.3	94.5	93.2	95.3
	<b>8th Gd:</b>	97.0	97.9	97.0	96.6	95.5	93.0
<hr/>							
608	<b>6th Gd:</b>	84.4	86.4	81.0	88.3	87.8	85.5
<b>West Millbrook Middle</b>	<b>7th Gd:</b>	89.6	90.6	85.9	91.8	87.6	84.7
	<b>8th Gd:</b>	97.0	93.8	90.0	94.7	88.6	87.5
<hr/>							
636	<b>6th Gd:</b>	76.3	83.3	83.8	83.2	90.5	89.0
<b>Zebulon GT Magnet Middle Schl</b>	<b>7th Gd:</b>	84.6	84.2	87.1	89.3	80.7	81.9
	<b>8th Gd:</b>	85.8	89.7	86.0	85.1	84.6	80.9
<hr/>							

**Appendix C**  
**Elementary School EOG Mean Scale Scores for Three Years**

		Reading			Mathematics		
		2002	2003	2004	2002	2003	2004
304	<b>3rd Gd:</b>	153.5	253.5	253.2	257.2	258.7	258.6
<b>Adams Elementary</b>	<b>4th Gd:</b>	156.5	257.7	256.8	263.2	265.1	265.1
	<b>5th Gd:</b>	162.4	261.1	262.5	266.9	266.5	269.3
308	<b>3rd Gd:</b>	154.0	251.9	252.6	258.3	255.6	257.5
<b>Apex Elementary</b>	<b>4th Gd:</b>	156.6	259.5	256.4	264.1	266.2	263.2
	<b>5th Gd:</b>	162.1	262.1	262.9	269.2	268.7	271.2
320	<b>3rd Gd:</b>	151.4	247.1	248.8	255.4	251.9	253.8
<b>Aversboro Elementary</b>	<b>4th Gd:</b>	152.5	253.3	252.0	256.2	259.4	257.7
	<b>5th Gd:</b>	156.5	256.7	258.2	259.5	260.2	263.3
326	<b>3rd Gd:</b>	151.4	253.8	253.0	255.4	257.5	256.1
<b>Baileywick Road Elementary</b>	<b>4th Gd:</b>	157.0	256.6	256.9	261.9	261.5	262.4
	<b>5th Gd:</b>	159.9	262.3	260.9	265.2	267.9	267.2
327	<b>3rd Gd:</b>		251.1	248.4		255.5	254.0
<b>Ballentine Elementary</b>	<b>4th Gd:</b>		255.5	255.5		262.3	263.7
	<b>5th Gd:</b>		256.8	259.0		263.7	266.6
328	<b>3rd Gd:</b>	154.1	254.0	254.7	257.9	258.3	259.2
<b>A.V. Baucom Elementary</b>	<b>4th Gd:</b>	157.6	258.3	257.5	263.8	265.7	265.7
	<b>5th Gd:</b>	160.7	261.1	262.4	267.1	268.6	270.2
334	<b>3rd Gd:</b>	155.7	253.4	253.2	260.3	258.3	258.5
<b>Brassfield Elementary</b>	<b>4th Gd:</b>	159.2	257.3	257.8	266.0	264.6	264.5
	<b>5th Gd:</b>	162.3	263.1	262.4	271.0	270.6	271.1
336	<b>3rd Gd:</b>	144.6	244.7	243.9	248.8	249.4	250.7
<b>Brentwood Elementary</b>	<b>4th Gd:</b>	150.4	248.2	249.7	253.3	255.6	256.5
	<b>5th Gd:</b>	155.1	254.0	256.3	259.1	259.3	261.7
340	<b>3rd Gd:</b>	151.7	249.5	249.8	254.3	254.6	255.1
<b>Briarcliff Elementary</b>	<b>4th Gd:</b>	154.2	255.4	253.1	258.0	262.3	261.3
	<b>5th Gd:</b>	160.6	259.9	260.0	266.5	264.3	266.3
344	<b>3rd Gd:</b>	146.3	246.3	247.9	249.6	250.9	251.9
<b>Brooks Museums Magnet Elem</b>	<b>4th Gd:</b>	151.0	253.0	251.4	254.6	255.9	256.5
	<b>5th Gd:</b>	158.1	257.6	257.5	261.9	261.7	260.7
352	<b>3rd Gd:</b>	147.8	246.8	248.7	251.1	252.8	251.9
<b>Bugg Elementary</b>	<b>4th Gd:</b>	152.3	253.1	252.5	257.6	259.9	259.3
	<b>5th Gd:</b>	159.3	258.3	257.0	261.7	263.1	261.5
362	<b>3rd Gd:</b>	143.2	247.6	245.8	247.9	255.3	253.7
<b>Carver Elementary</b>	<b>4th Gd:</b>	149.0	249.7	251.3	254.5	259.5	259.7
	<b>5th Gd:</b>	156.3	255.8	254.5	263.7	261.5	260.9

**Appendix C**  
**Elementary School EOG Mean Scale Scores for Three Years**

		Reading			Mathematics		
		2002	2003	2004	2002	2003	2004
364	<b>3rd Gd:</b>	152.2	250.2	251.5	255.7	256.6	255.9
<b>Cary Elementary</b>	<b>4th Gd:</b>	152.1	254.5	256.5	259.4	263.3	264.3
	<b>5th Gd:</b>	158.9	258.7	258.3	263.5	264.6	264.3
	<hr/>						
376	<b>3rd Gd:</b>	152.7	252.8	252.3	255.9	257.9	257.7
<b>A.B. Combs Elementary</b>	<b>4th Gd:</b>	156.9	256.5	255.4	262.4	262.8	261.8
	<b>5th Gd:</b>	159.4	261.0	260.2	268.2	267.4	266.8
	<hr/>						
380	<b>3rd Gd:</b>	146.9	247.2	248.7	250.5	252.2	255.1
<b>Conn Elementary</b>	<b>4th Gd:</b>	151.3	251.5	253.4	257.7	257.0	259.1
	<b>5th Gd:</b>	156.5	257.0	257.4	262.2	263.4	262.0
	<hr/>						
384	<b>3rd Gd:</b>	147.0	247.3	246.2	250.7	253.5	253.6
<b>Creech Road Elementary</b>	<b>4th Gd:</b>	148.5	251.0	250.9	257.8	256.4	257.6
	<b>5th Gd:</b>	153.5	254.0	255.6	257.4	259.0	260.7
	<hr/>						
390	<b>3rd Gd:</b>	156.1	255.0	254.8	259.1	259.8	259.3
<b>Davis Drive Elementary</b>	<b>4th Gd:</b>	158.3	259.4	260.2	263.8	267.7	268.3
	<b>5th Gd:</b>	163.0	264.0	263.4	269.9	270.7	272.1
	<hr/>						
393	<b>3rd Gd:</b>	151.5	251.2	252.3	255.5	257.3	256.8
<b>Dillard Drive Elementary</b>	<b>4th Gd:</b>	155.1	253.4	255.6	259.8	258.8	261.8
	<b>5th Gd:</b>	157.3	259.2	259.0	261.7	265.4	263.7
	<hr/>						
396	<b>3rd Gd:</b>	149.4	249.7	250.9	252.3	255.2	255.8
<b>Douglas Elementary</b>	<b>4th Gd:</b>	154.6	253.0	254.0	259.6	258.4	259.0
	<b>5th Gd:</b>	159.5	258.9	257.6	264.9	263.8	263.1
	<hr/>						
398	<b>3rd Gd:</b>	153.0	251.7	250.4	256.6	256.6	255.0
<b>Durant Road Elementary</b>	<b>4th Gd:</b>	157.0	257.6	257.0	261.5	262.8	261.8
	<b>5th Gd:</b>	159.5	261.9	261.2	266.1	268.6	267.9
	<hr/>						
414	<b>3rd Gd:</b>	152.3	252.2	251.5	256.6	257.1	256.6
<b>Farmington Woods Elementary</b>	<b>4th Gd:</b>	155.2	257.0	258.2	260.1	262.7	263.8
	<b>5th Gd:</b>	160.1	261.3	261.6	265.0	267.3	267.4
	<hr/>						
415	<b>3rd Gd:</b>	147.9	247.7	247.7	252.0	252.9	253.3
<b>Fox Road Elementary</b>	<b>4th Gd:</b>	154.2	252.1	252.7	259.5	258.3	258.3
	<b>5th Gd:</b>	157.3	257.2	256.9	260.9	262.2	261.4
	<hr/>						
416	<b>3rd Gd:</b>	150.7	248.4	248.1	253.1	253.2	252.2
<b>Fuller Elementary</b>	<b>4th Gd:</b>	155.3	254.0	254.9	258.0	259.6	260.2
	<b>5th Gd:</b>	159.6	260.9	257.6	263.6	266.1	262.2
	<hr/>						
420	<b>3rd Gd:</b>	149.2	249.0	248.3	253.0	253.8	252.5
<b>Fuquay-Varina Elementary</b>	<b>4th Gd:</b>	152.2	253.9	253.3	257.0	260.9	259.9
	<b>5th Gd:</b>	157.7	256.0	256.8	261.3	261.8	261.2
	<hr/>						

**Appendix C**  
**Elementary School EOG Mean Scale Scores for Three Years**

		Reading			Mathematics		
		2002	2003	2004	2002	2003	2004
439	<b>3rd Gd:</b>	155.2	253.6	254.3	258.2	257.9	258.4
<b>Green Hope Elementary</b>	<b>4th Gd:</b>	158.1	259.2	259.2	264.8	265.1	263.6
	<b>5th Gd:</b>	163.6	263.9	264.2	274.3	272.5	272.6
	<hr/>						
440	<b>3rd Gd:</b>	153.6	252.2	250.3	256.7	256.4	254.9
<b>Green Elementary</b>	<b>4th Gd:</b>	156.0	256.8	255.8	261.6	261.3	260.1
	<b>5th Gd:</b>	161.4	262.1	260.0	268.5	268.7	265.7
	<hr/>						
442	<b>3rd Gd:</b>	151.7	251.4	249.4	254.9	256.8	256.2
<b>Hilburn Drive Elementary</b>	<b>4th Gd:</b>	154.8	255.4	255.9	259.0	260.8	263.6
	<b>5th Gd:</b>	162.2	261.7	260.5	268.9	268.9	268.1
	<hr/>						
446	<b>3rd Gd:</b>	148.4	245.4	243.0	251.0	253.3	250.6
<b>Hodge Road Elementary</b>	<b>4th Gd:</b>	151.7	251.2	250.3	257.8	258.9	259.2
	<b>5th Gd:</b>	157.1	256.9	254.9	259.4	261.7	261.8
	<hr/>						
447	<b>3rd Gd:</b>	150.7	249.3	248.3	254.9	254.3	254.8
<b>Holly Springs Elementary</b>	<b>4th Gd:</b>	152.3	253.6	254.4	258.9	259.6	261.4
	<b>5th Gd:</b>	158.3	257.2	260.2	264.6	265.5	266.1
	<hr/>						
448	<b>3rd Gd:</b>	150.4	252.8	253.4	254.5	256.3	255.4
<b>Hunter Elementary</b>	<b>4th Gd:</b>	157.6	257.4	256.9	261.5	263.6	263.1
	<b>5th Gd:</b>	161.0	262.4	263.1	267.1	269.4	270.2
	<hr/>						
449	<b>3rd Gd:</b>			248.6			253.6
<b>Holly Ridge Elementary School</b>	<b>4th Gd:</b>			256.2			263.7
	<b>5th Gd:</b>			256.5			261.8
	<hr/>						
452	<b>3rd Gd:</b>	151.2	250.7	252.7	256.7	256.5	257.7
<b>Jeffreys Grove Elementary</b>	<b>4th Gd:</b>	154.5	253.7	254.9	263.1	262.4	263.4
	<b>5th Gd:</b>	160.0	258.2	259.6	268.4	266.1	268.3
	<hr/>						
454	<b>3rd Gd:</b>	151.1	252.1	250.6	254.6	256.4	255.6
<b>Heritage Elementary</b>	<b>4th Gd:</b>	155.0	256.2	256.6	259.8	261.2	263.2
	<b>5th Gd:</b>	160.3	259.7	260.0	265.3	267.1	266.5
	<hr/>						
456	<b>3rd Gd:</b>	148.0	247.0	246.9	250.4	252.5	253.1
<b>J. Y. Joyner Elementary</b>	<b>4th Gd:</b>	151.0	254.0	252.7	253.3	260.4	259.4
	<b>5th Gd:</b>	155.5	256.0	258.5	259.6	260.4	264.1
	<hr/>						
460	<b>3rd Gd:</b>	151.1	251.1	252.6	255.8	257.4	256.7
<b>Kingswood Elementary</b>	<b>4th Gd:</b>	157.0	255.8	256.0	262.9	264.3	263.5
	<b>5th Gd:</b>	163.7	261.8	261.2	272.4	272.8	270.5
	<hr/>						
464	<b>3rd Gd:</b>	144.9	248.5	245.9	249.0	254.9	251.8
<b>Knightdale Elementary</b>	<b>4th Gd:</b>	148.5	252.3	251.7	254.5	259.3	258.7
	<b>5th Gd:</b>	154.7	256.2	256.7	255.7	261.3	261.4
	<hr/>						



**Appendix C**  
**Elementary School EOG Mean Scale Scores for Three Years**

		Reading			Mathematics		
		2002	2003	2004	2002	2003	2004
468	<b>3rd Gd:</b>	153.0	252.3	253.4	258.7	258.7	258.6
<b>Lacy Elementary</b>	<b>4th Gd:</b>	156.5	257.3	256.4	262.9	263.6	263.2
	<b>5th Gd:</b>	161.7	262.6	262.5	266.9	267.1	269.2
	<hr/>						
469	<b>3rd Gd:</b>	154.5	254.3	253.6	258.8	257.7	258.1
<b>Leesville Road Elementary</b>	<b>4th Gd:</b>	157.7	258.2	256.8	264.2	264.2	263.2
	<b>5th Gd:</b>	161.5	261.1	261.3	267.9	268.8	268.0
	<hr/>						
470	<b>3rd Gd:</b>	150.4	250.8	250.3	253.5	254.7	254.5
<b>Lead Mine Elementary</b>	<b>4th Gd:</b>	156.0	255.6	254.7	260.4	260.3	261.9
	<b>5th Gd:</b>	160.1	260.3	260.9	267.1	267.5	267.5
	<hr/>						
476	<b>3rd Gd:</b>	152.1	248.9	249.0	255.9	253.0	252.9
<b>Lincoln Heights Elementary</b>	<b>4th Gd:</b>	151.5	254.0	253.6	255.9	258.9	258.7
	<b>5th Gd:</b>	159.6	256.8	258.7	263.0	262.2	263.5
	<hr/>						
480	<b>3rd Gd:</b>	149.6	251.1	250.3	254.3	256.1	254.5
<b>Lockhart Elementary</b>	<b>4th Gd:</b>	154.1	255.4	256.4	259.3	261.8	263.3
	<b>5th Gd:</b>	159.4	260.1	259.2	262.6	265.5	266.3
	<hr/>						
488	<b>3rd Gd:</b>	149.9	247.8	249.6	253.0	253.6	254.7
<b>Lynn Road Elementary</b>	<b>4th Gd:</b>	152.0	253.7	251.9	256.6	259.5	258.6
	<b>5th Gd:</b>	158.3	255.8	257.1	262.5	260.9	262.8
	<hr/>						
494	<b>3rd Gd:</b>	150.9	251.2	249.8	255.1	255.2	253.7
<b>Middle Creek Elementary</b>	<b>4th Gd:</b>	153.6	257.4	256.4	258.6	263.4	262.2
	<b>5th Gd:</b>	157.8	259.0	259.8	263.5	266.4	268.1
	<hr/>						
496	<b>3rd Gd:</b>	144.2	246.0	244.9	248.6	252.1	251.9
<b>Millbrook Elementary Magnet</b>	<b>4th Gd:</b>	150.4	249.2	250.1	255.4	256.5	257.7
	<b>5th Gd:</b>	156.1	257.6	254.0	258.6	262.2	258.0
	<hr/>						
504	<b>3rd Gd:</b>	155.3	256.5	255.3	259.9	260.4	259.0
<b>Morrisville Elementary</b>	<b>4th Gd:</b>	158.0	258.7	260.1	265.2	264.7	266.3
	<b>5th Gd:</b>	161.4	263.5	263.9	268.8	269.8	270.9
	<hr/>						
516	<b>3rd Gd:</b>	151.6	250.2	250.3	253.7	254.8	255.6
<b>North Ridge Elementary</b>	<b>4th Gd:</b>	155.6	255.0	255.1	260.2	260.0	260.5
	<b>5th Gd:</b>	160.0	259.5	259.6	266.0	265.7	265.3
	<hr/>						
520	<b>3rd Gd:</b>	153.0	252.0	250.2	256.1	255.3	255.3
<b>Northwoods Elementary</b>	<b>4th Gd:</b>	154.2	257.4	255.4	259.3	263.3	261.7
	<b>5th Gd:</b>	161.7	260.5	260.8	266.7	266.5	266.8
	<hr/>						
522	<b>3rd Gd:</b>	154.8	254.6	255.6	258.1	257.8	258.3
<b>Oak Grove Elementary</b>	<b>4th Gd:</b>	158.6	259.6	258.4	263.6	264.4	265.3
	<b>5th Gd:</b>	163.3	263.4	263.6	271.6	270.2	271.1
	<hr/>						

**Appendix C**  
**Elementary School EOG Mean Scale Scores for Three Years**

		Reading			Mathematics		
		2002	2003	2004	2002	2003	2004
523 Olive Chapel Elementary	<b>3rd Gd:</b>	152.0	252.7	253.5	257.4	258.7	258.3
	<b>4th Gd:</b>	157.1	257.4	257.2	262.0	264.5	264.6
	<b>5th Gd:</b>	161.4	262.2	262.6	267.5	267.1	268.2
524 Olds Elementary	<b>3rd Gd:</b>	149.1	252.5	251.7	252.9	255.9	256.0
	<b>4th Gd:</b>	155.3	255.4	256.4	262.3	263.1	262.7
	<b>5th Gd:</b>	159.6	259.1	256.8	265.9	265.2	265.6
525 Partnership Primary	<b>3rd Gd:</b>	149.8	249.8	251.0	254.3	254.8	255.2
	<b>4th Gd:</b>	155.9	255.9	255.9	263.5	261.2	260.9
	<b>5th Gd:</b>	159.1	259.3	261.8	264.9	266.4	267.8
530 Penny Road Elementary	<b>3rd Gd:</b>	151.1	252.1	253.9	256.3	256.2	257.8
	<b>4th Gd:</b>	152.8	255.8	255.7	258.6	262.6	262.0
	<b>5th Gd:</b>	160.9	261.8	262.4	266.5	266.9	270.1
531 Pleasant Union Elementary	<b>3rd Gd:</b>	151.6	252.4	252.5	254.9	256.8	256.5
	<b>4th Gd:</b>	155.5	257.0	256.1	261.2	262.4	262.5
	<b>5th Gd:</b>	159.9	260.4	261.7	265.1	267.2	266.4
532 Poe Elementary	<b>3rd Gd:</b>	150.9	249.1	248.2	254.7	254.7	253.2
	<b>4th Gd:</b>	154.9	256.7	252.8	260.8	262.4	258.9
	<b>5th Gd:</b>	160.1	261.1	261.6	263.8	267.0	268.9
536 Powell Elementary	<b>3rd Gd:</b>	148.7	249.8	248.2	253.2	254.6	254.6
	<b>4th Gd:</b>	152.9	250.6	252.6	258.2	256.3	259.0
	<b>5th Gd:</b>	157.6	259.1	256.1	262.0	265.2	262.5
540 Rand Road Elementary	<b>3rd Gd:</b>	146.1	249.1	248.2	251.8	254.5	254.9
	<b>4th Gd:</b>	150.8	250.7	253.5	258.1	259.1	259.8
	<b>5th Gd:</b>	157.3	257.4	257.1	262.5	264.6	264.8
542 Reedy Creek Elementary	<b>3rd Gd:</b>	147.3	248.8	246.9	251.9	255.7	252.8
	<b>4th Gd:</b>	152.7	252.7	253.3	257.2	258.7	259.8
	<b>5th Gd:</b>	157.5	259.2	256.7	262.3	263.5	263.1
544 Rolesville Elementary	<b>3rd Gd:</b>	148.2	250.3	250.2	250.8	255.6	254.5
	<b>4th Gd:</b>	151.9	252.3	254.0	257.9	259.3	259.9
	<b>5th Gd:</b>	156.0	258.1	256.6	259.2	262.2	260.6
548 Root Elementary	<b>3rd Gd:</b>	154.0	250.7	249.8	257.9	255.6	254.2
	<b>4th Gd:</b>	155.6	258.1	257.1	262.8	265.4	262.9
	<b>5th Gd:</b>	158.6	258.1	261.0	266.0	264.6	268.4
550 Salem Elementary	<b>3rd Gd:</b>	152.2	252.1	252.8	257.6	257.5	257.0
	<b>4th Gd:</b>	157.2	258.0	257.7	263.5	266.1	264.7
	<b>5th Gd:</b>	160.4	261.5	261.4	264.1	266.8	269.0

**Appendix C**  
**Elementary School EOG Mean Scale Scores for Three Years**

		Reading			Mathematics		
		2002	2003	2004	2002	2003	2004
560	<b>3rd Gd:</b>	146.1	245.5	245.5	248.9	252.7	252.9
<b>Fred A. Smith Elementary</b>	<b>4th Gd:</b>	149.4	249.8	250.2	256.6	257.7	257.9
	<b>5th Gd:</b>	155.5	253.9	254.7	259.0	259.4	258.9
	<hr/>						
564	<b>3rd Gd:</b>	151.4	249.4	249.9	256.2	253.8	254.8
<b>Stough Elementary</b>	<b>4th Gd:</b>	156.3	254.1	252.4	260.9	260.2	259.4
	<b>5th Gd:</b>	159.6	260.4	258.2	263.7	266.0	263.8
	<hr/>						
568	<b>3rd Gd:</b>	150.9	249.2	248.2	254.1	255.2	254.3
<b>Swift Creek Elementary</b>	<b>4th Gd:</b>	154.5	255.7	255.2	259.2	262.3	261.0
	<b>5th Gd:</b>	158.2	259.6	259.9	262.9	266.1	266.5
	<hr/>						
570	<b>3rd Gd:</b>	152.8	252.6	251.9	257.0	257.2	256.7
<b>Timber Drive Elementary</b>	<b>4th Gd:</b>	156.5	255.7	255.9	262.2	263.3	262.9
	<b>5th Gd:</b>	160.1	259.8	259.9	267.0	265.7	266.4
	<hr/>						
572	<b>3rd Gd:</b>	147.6	247.4	248.9	252.0	252.1	252.2
<b>Underwood Elementary</b>	<b>4th Gd:</b>	151.8	252.9	252.6	257.3	259.1	257.4
	<b>5th Gd:</b>	156.7	259.0	257.7	263.9	266.3	261.9
	<hr/>						
576	<b>3rd Gd:</b>	149.0	248.2	249.3	253.6	254.3	254.1
<b>Vance Elementary</b>	<b>4th Gd:</b>	152.8	251.6	253.1	259.3	259.3	261.8
	<b>5th Gd:</b>	157.6	258.2	256.4	263.4	264.4	263.2
	<hr/>						
580	<b>3rd Gd:</b>	147.8	249.5	248.5	252.3	254.1	255.0
<b>Vandora Springs Elementary</b>	<b>4th Gd:</b>	152.9	252.3	255.4	259.8	259.5	263.2
	<b>5th Gd:</b>	157.5	257.5	257.6	261.8	261.5	263.2
	<hr/>						
584	<b>3rd Gd:</b>	149.5	248.7	249.3	252.1	253.0	253.0
<b>Wake Forest Elementary</b>	<b>4th Gd:</b>	152.9	253.3	253.3	256.9	258.5	258.8
	<b>5th Gd:</b>	158.0	259.0	257.7	261.2	263.0	262.4
	<hr/>						
593	<b>3rd Gd:</b>	150.3	250.8	250.3	253.5	256.2	255.8
<b>Wakefield Elementary</b>	<b>4th Gd:</b>	153.8	254.4	255.1	258.5	261.7	262.6
	<b>5th Gd:</b>	159.7	260.3	260.3	264.0	265.7	266.4
	<hr/>						
596	<b>3rd Gd:</b>	152.3	253.2	254.0	256.6	257.8	257.4
<b>Washington Elementary</b>	<b>4th Gd:</b>	157.0	256.9	257.1	262.6	264.3	264.7
	<b>5th Gd:</b>	161.0	261.5	261.4	265.9	268.9	268.9
	<hr/>						
598	<b>3rd Gd:</b>	153.2	251.5	250.9	256.4	256.2	256.1
<b>Weatherstone Elementary</b>	<b>4th Gd:</b>	156.6	256.1	255.9	261.8	263.2	260.9
	<b>5th Gd:</b>	162.1	262.3	259.4	271.3	269.3	268.0
	<hr/>						
600	<b>3rd Gd:</b>	149.0	248.1	246.9	252.9	252.2	252.8
<b>Wendell Elementary</b>	<b>4th Gd:</b>	153.2	253.0	251.0	259.3	260.2	258.9
	<b>5th Gd:</b>	157.0	258.2	258.1	264.6	266.2	265.4
	<hr/>						

**Appendix C**  
**Elementary School EOG Mean Scale Scores for Three Years**

		Reading			Mathematics		
		2002	2003	2004	2002	2003	2004
606	<b>3rd Gd:</b>	152.2	252.1	250.5	255.2	256.8	255.4
<b>West Lake Elementary</b>	<b>4th Gd:</b>	155.5	256.1	256.8	260.9	261.5	263.6
	<b>5th Gd:</b>	160.2	261.1	261.1	267.0	268.3	269.0
616	<b>3rd Gd:</b>	148.4	248.9	247.2	252.6	254.5	253.7
<b>Wilburn Elementary</b>	<b>4th Gd:</b>	151.7	252.9	253.0	257.2	259.0	259.7
	<b>5th Gd:</b>	158.2	258.6	257.9	261.5	264.1	263.7
618	<b>3rd Gd:</b>	149.7	249.2	250.5	253.6	254.4	255.2
<b>Wildwood Forest Elementary</b>	<b>4th Gd:</b>	151.4	252.9	253.2	255.7	259.6	258.8
	<b>5th Gd:</b>	159.2	258.5	258.6	261.5	262.4	263.8
620	<b>3rd Gd:</b>	154.6	251.3	255.0	255.1	254.2	254.8
<b>Wiley Elementary</b>	<b>4th Gd:</b>	157.6	257.9	255.7	264.9	262.6	262.5
	<b>5th Gd:</b>	158.4	260.8	261.3	264.8	268.8	267.8
624	<b>3rd Gd:</b>	151.5	248.6	249.2	254.7	254.7	254.6
<b>Willow Springs Elementary</b>	<b>4th Gd:</b>	153.7	252.6	253.3	259.3	260.9	259.9
	<b>5th Gd:</b>	157.8	257.9	257.5	264.9	265.6	265.6
626	<b>3rd Gd:</b>	150.3	247.5	249.8	253.2	254.4	253.2
<b>Yates Mill Elementary</b>	<b>4th Gd:</b>	151.6	254.0	252.2	256.7	261.1	260.7
	<b>5th Gd:</b>	158.7	257.5	259.0	265.4	262.2	266.1
628	<b>3rd Gd:</b>	150.9	249.6	250.5	255.9	255.3	255.6
<b>York Elementary</b>	<b>4th Gd:</b>	153.1	254.6	255.7	259.2	260.8	262.4
	<b>5th Gd:</b>	158.1	257.9	259.6	265.3	265.4	267.0
632	<b>3rd Gd:</b>	147.2	247.8	246.5	250.4	253.3	251.9
<b>Zebulon Elementary</b>	<b>4th Gd:</b>	151.0	250.0	250.0	255.8	258.0	258.1
	<b>5th Gd:</b>	156.1	255.1	256.0	261.6	260.4	261.4

**Appendix D**  
**Middle School EOG Mean Scale Scores for Three Years**

		Reading			Mathematics		
		2002	2003	2004	2002	2003	2004
312	<b>6th Gd:</b>	161.7	262.5	264.6	269.5	270.9	272.1
<b>Apex Middle</b>	<b>7th Gd:</b>	164.4	265.6	265.6	273.0	273.3	275.5
	<b>8th Gd:</b>	167.1	268.5	268.1	277.4	277.8	277.7
	<hr/>						
356	<b>6th Gd:</b>	159.1	260.6	261.3	267.7	267.3	268.0
<b>Carnage Middle</b>	<b>7th Gd:</b>	161.2	263.1	263.2	268.4	271.4	271.1
	<b>8th Gd:</b>	164.4	265.0	265.8	273.8	272.2	274.9
	<hr/>						
360	<b>6th Gd:</b>	159.3	259.3	257.4	265.3	265.8	264.8
<b>Carroll Middle</b>	<b>7th Gd:</b>	161.8	260.7	261.8	269.7	268.1	270.6
	<b>8th Gd:</b>	164.4	264.7	263.0	271.5	271.4	271.1
	<hr/>						
370	<b>6th Gd:</b>	158.7	261.6	262.1	265.0	269.3	269.0
<b>Centennial Campus Middle</b>	<b>7th Gd:</b>	163.2	262.2	264.1	270.2	270.6	273.8
	<b>8th Gd:</b>	163.6	265.7	265.4	269.9	272.0	271.7
	<hr/>						
388	<b>6th Gd:</b>	159.8	260.3	259.9	266.5	266.7	266.7
<b>Daniels Middle School</b>	<b>7th Gd:</b>	164.2	263.4	263.3	272.1	270.0	270.6
	<b>8th Gd:</b>	166.2	266.5	265.9	273.1	273.9	273.7
	<hr/>						
391	<b>6th Gd:</b>	164.4	265.0	265.0	272.0	273.5	274.0
<b>Davis Drive Middle</b>	<b>7th Gd:</b>	165.0	266.6	267.2	276.3	275.7	276.9
	<b>8th Gd:</b>	168.0	269.1	269.9	277.6	279.7	279.5
	<hr/>						
394	<b>6th Gd:</b>	160.2	261.6	261.0	267.6	268.6	268.2
<b>Dillard Drive Middle</b>	<b>7th Gd:</b>	164.8	265.6	264.3	276.1	273.8	272.6
	<b>8th Gd:</b>	167.4	268.0	268.7	277.5	277.1	278.4
	<hr/>						
399	<b>6th Gd:</b>	162.1	261.7	262.4	269.6	269.2	270.0
<b>Durant Road Middle</b>	<b>7th Gd:</b>	165.3	264.9	264.7	274.9	273.5	273.3
	<b>8th Gd:</b>	167.1	267.8	267.7	275.7	277.3	277.1
	<hr/>						
400	<b>6th Gd:</b>	159.0	258.9	260.3	264.7	265.1	266.3
<b>Reedy Creek Middle</b>	<b>7th Gd:</b>	161.8	262.3	261.1	271.8	271.3	268.8
	<b>8th Gd:</b>	165.7	266.2	265.4	276.5	276.5	274.8
	<hr/>						
404	<b>6th Gd:</b>	154.6	256.2	257.4	261.0	263.8	263.5
<b>East Garner Magnet Middle</b>	<b>7th Gd:</b>	160.6	259.5	258.3	266.7	265.6	264.6
	<b>8th Gd:</b>	162.7	264.2	263.8	268.9	270.9	269.8
	<hr/>						
408	<b>6th Gd:</b>	157.1	259.1	257.8	263.3	264.1	263.3
<b>East Millbrook Middle School</b>	<b>7th Gd:</b>	160.8	260.9	260.7	267.3	266.3	265.4
	<b>8th Gd:</b>	165.1	264.7	264.1	271.1	270.2	269.1
	<hr/>						
410	<b>6th Gd:</b>	156.8	256.9	257.7	260.8	264.3	264.7
<b>East Wake Middle</b>	<b>7th Gd:</b>	159.6	259.8	259.4	266.0	265.5	266.7
	<b>8th Gd:</b>	161.9	263.3	261.4	268.9	270.1	270.0
	<hr/>						

**Appendix D**  
**Middle School EOG Mean Scale Scores for Three Years**

		Reading			Mathematics		
		2002	2003	2004	2002	2003	2004
424	<b>6th Gd:</b>	158.5	259.7	259.5	264.8	266.7	266.9
<b>Fuquay Varina Middle School</b>	<b>7th Gd:</b>	160.7	261.5	261.3	267.6	266.9	267.7
	<b>8th Gd:</b>	165.0	264.6	264.8	271.7	271.6	270.5
444	<b>6th Gd:</b>			263.9			274.2
<b>Heritage Middle School</b>	<b>7th Gd:</b>						
	<b>8th Gd:</b>						
450	<b>6th Gd:</b>			259.8			268.3
<b>Holly Ridge Middle</b>	<b>7th Gd:</b>			262.7			270.4
	<b>8th Gd:</b>			264.8			271.5
471	<b>6th Gd:</b>	161.4	262.8	262.9	268.3	269.3	269.5
<b>Leesville Road Middle</b>	<b>7th Gd:</b>	162.9	264.7	265.8	272.8	273.5	273.1
	<b>8th Gd:</b>	167.8	268.0	268.0	278.2	275.4	275.8
472	<b>6th Gd:</b>	164.2	266.3	265.6	273.6	275.0	274.6
<b>Ligon GT Magnet Middle School</b>	<b>7th Gd:</b>	167.1	268.7	268.5	279.4	278.2	278.7
	<b>8th Gd:</b>	169.8	269.9	270.4	283.1	281.0	280.1
484	<b>6th Gd:</b>	164.7	265.0	264.2	271.6	271.3	270.7
<b>Lufkin Road Middle</b>	<b>7th Gd:</b>	165.8	267.8	267.7	276.3	277.5	277.4
	<b>8th Gd:</b>	168.7	269.5	270.3	280.8	280.1	280.0
492	<b>6th Gd:</b>	161.8	262.2	262.9	269.5	269.3	270.7
<b>Martin Middle</b>	<b>7th Gd:</b>	164.0	265.9	265.1	274.3	276.4	273.3
	<b>8th Gd:</b>	167.1	268.2	268.9	276.9	277.5	279.9
506	<b>6th Gd:</b>		259.1	259.9		264.1	264.0
<b>Moore Squ Museum Magnet Mid</b>	<b>7th Gd:</b>		261.5	264.2		266.1	269.1
	<b>8th Gd:</b>			264.1			267.3
512	<b>6th Gd:</b>	156.4	256.7	257.0	263.8	264.9	264.0
<b>North Garner Middle</b>	<b>7th Gd:</b>	158.7	260.0	259.4	268.5	269.8	269.7
	<b>8th Gd:</b>	160.8	260.8	262.1	268.2	269.1	269.0
592	<b>6th Gd:</b>	158.5	259.1	258.3	263.8	265.1	265.7
<b>Wake Forest-Rolesville Middle</b>	<b>7th Gd:</b>	161.0	261.2	262.0	267.9	266.3	267.7
	<b>8th Gd:</b>	163.1	263.9	263.5	270.1	270.1	270.0
594	<b>6th Gd:</b>	161.5	262.8	262.7	268.3	270.2	270.5
<b>Wakefield Middle</b>	<b>7th Gd:</b>	164.4	266.6	265.8	273.3	274.1	272.9
	<b>8th Gd:</b>	166.4	268.3	268.7	274.6	275.9	277.5
604	<b>6th Gd:</b>	162.8	264.2	263.6	270.5	271.4	271.1
<b>West Cary Middle</b>	<b>7th Gd:</b>	163.5	265.6	266.6	272.8	273.5	275.5
	<b>8th Gd:</b>	166.7	268.0	268.3	275.7	275.7	277.4

**Appendix D**  
**Middle School EOG Mean Scale Scores for Three Years**

		Reading			Mathematics		
		2002	2003	2004	2002	2003	2004
607	<b>6th Gd:</b>	162.9	263.4	263.2	269.7	270.7	271.1
<b>West Lake Middle</b>	<b>7th Gd:</b>	164.9	265.7	266.0	274.1	273.0	275.2
	<b>8th Gd:</b>	168.0	269.1	268.8	277.6	278.0	277.1
608	<b>6th Gd:</b>	160.4	260.7	260.1	265.7	265.5	266.1
<b>West Millbrook Middle</b>	<b>7th Gd:</b>	163.7	263.5	262.1	272.9	270.4	270.4
	<b>8th Gd:</b>	167.4	267.0	266.3	275.1	274.4	274.0
636	<b>6th Gd:</b>	156.9	258.0	258.6	262.7	265.5	265.2
<b>Zebulon GT Magnet Middle Schl</b>	<b>7th Gd:</b>	161.0	259.6	260.0	268.4	266.0	266.7
	<b>8th Gd:</b>	163.2	264.5	262.2	270.9	270.9	269.9