

**FREE AND REDUCED-PRICE LUNCH PARTICIPATION IN THE
WAKE COUNTY PUBLIC SCHOOL SYSTEM
1993-2004**

The percentage of all students who participate in the free or reduced-price lunch (FRL) program is different for elementary, middle, and high schools. Beginning in middle school - as grade levels increase - fewer students participate, leading to high school rates that are half the elementary rate. The percentage of students within each grade span receiving FRL remained fairly constant during a decade of steady enrollment growth until 1999-2000. For the past four years, a slow but steady rise in participation led to the current all time high: 29% for elementary, 25% for middle, and 15% for high school. It is important to note that the data for this report came from the information available in October of each year, while other reports may use data from other times in the year.

**Figure 1
Percentage of Students Receiving FRL over 10 Years**

	Elementary	Middle	High
1993-94	25%	20%	12%
1994-95	25%	21%	13%
1995-96	24%	19%	11%
1996-97	25%	19%	11%
1997-98	25%	21%	12%
1998-99	24%	20%	11%
1999-00	23%	19%	10%
2000-01	25%	21%	11%
2001-02	27%	22%	12%
2002-03	27%	23%	13%
2003-04	29%	25%	15%

Due to the differences in participation at each of the three school levels, a district-wide participation rate is not reported. The elementary school rate is probably the best estimate of the extent to which low family income impacts the school system.

Year-to-year fluctuations in participation, as shown in Figure 2, has occurred simultaneously at all three levels and is probably due to annual changes in eligibility standards and countywide economic conditions.

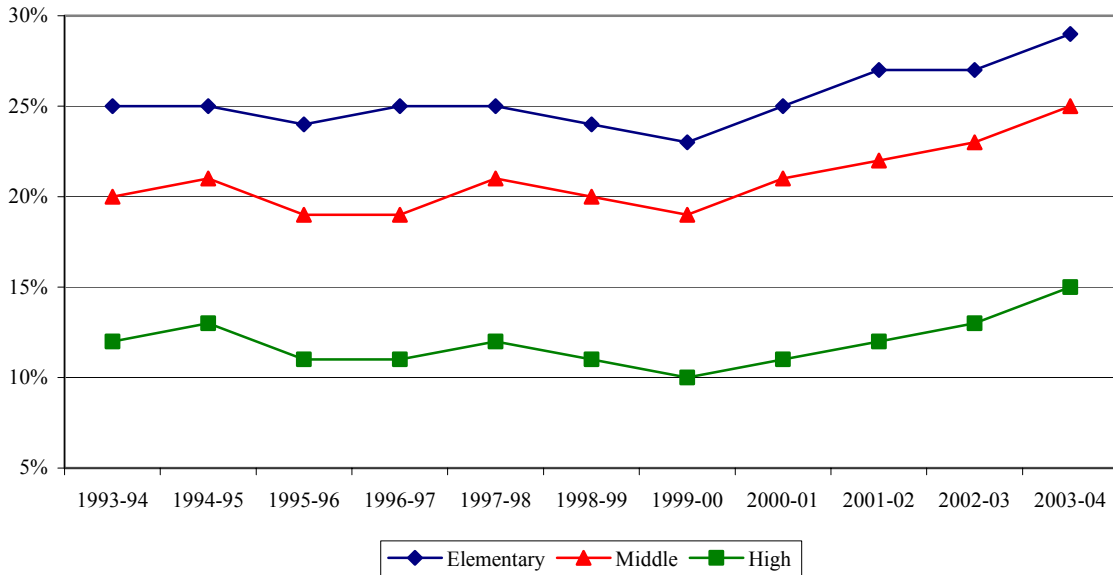
Authors

Daniel P. O’Flaherty
Chuck Dulaney



**WAKE COUNTY
PUBLIC SCHOOL SYSTEM**

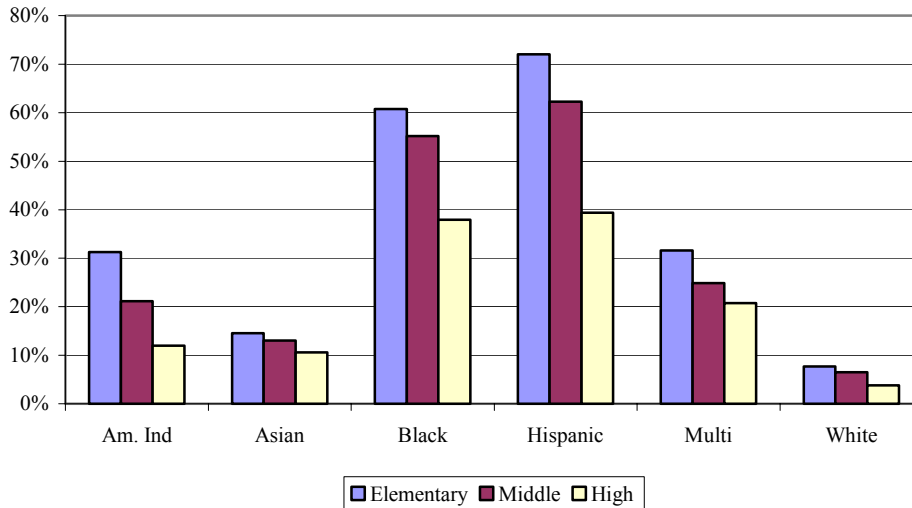
Figure 2
Percent of Student Receiving FRL over 11 years.



As illustrated by Figure 3, there is great disparity in participation rates when data is disaggregated by ethnicity. Hispanic/Latino students had the highest participation rates in October 2003, with 72% participation in elementary, 62% in middle, and 39% in high school. Black students had slightly lower participation rates: 60% in elementary, 55% in middle, and 38% in high school. White students had the lowest participation rates, with 8% participation in elementary, 7% in middle, and 4% in high school. The differences across ethnic groups are higher in elementary schools, ranging from 72% for Hispanic/Latino students to 8% for White students.

The attached tables show four years of free/reduced-price lunch participation for each WCPSS school, measured in October of each school year.

Figure 3
Percentage of Students Receiving FRL in 2003-04, by Race



Free and Reduced-Price Lunch Participation Over Time 1995-2004

Measured in October of each Year

Name	1995	1996	1997	1998	1999	2000	2001	2002	2003
Elementary Schools									
Adams Elementary	27.9%	29.3%	26.5%	24.0%	9.9%	9.5%	11.6%	13.7%	15.9%
Apex Elementary	10.0%	10.2%	8.1%	7.2%	11.3%	10.4%	14.2%	21.2%	23.9%
Aversboro Elementary	22.7%	26.6%	32.8%	32.0%	36.6%	39.4%	39.4%	41.6%	44.5%
Baileywick Elementary		12.7%	28.5%	21.4%	19.3%	20.8%	23.7%	19.1%	21.8%
Ballentine Elementary								22.5%	19.7%
Baucom Elementary	12.7%	12.5%	9.2%	7.1%	5.3%	8.3%	10.4%	11.2%	11.6%
Brassfield Elementary	22.2%	27.4%	21.6%	25.1%	8.7%	2.4%	3.1%	14.2%	10.5%
Brentwood Elementary	34.6%	41.1%	40.2%	36.5%	35.8%	41.8%	52.1%	54.7%	56.3%
Briarcliff Elementary	17.2%	16.2%	28.8%	26.0%	24.5%	27.6%	30.1%	36.6%	37.8%
Brooks Elementary	23.4%	29.8%	29.5%	35.0%	36.9%	33.7%	40.7%	37.6%	36.8%
Bugg Elementary	31.6%	25.5%	27.1%	25.2%	23.9%	25.3%	24.3%	25.6%	30.4%
Carver Elementary	39.1%	42.6%	44.1%	44.3%	39.9%	46.3%	49.6%	52.1%	58.6%
Cary Elementary	21.2%	26.9%	32.8%	33.5%	32.9%	33.7%	34.3%	31.0%	32.7%
Combs Elementary	25.8%	34.3%	24.4%	23.1%	21.9%	25.8%	25.6%	30.6%	29.1%
Conn Elementary	39.3%	44.4%	36.9%	38.3%	33.3%	38.1%	36.1%	38.0%	41.5%
Creech Road Elementary	35.5%	43.1%	46.3%	44.8%	42.4%	42.3%	47.4%	47.8%	51.3%
Davis Drive Elementary	14.4%	10.9%	8.1%	5.8%	3.5%	3.8%	7.1%	7.4%	6.8%
Dillard Dr. Elementary					27.9%	35.0%	37.2%	37.3%	35.1%
Douglas Elementary	26.7%	42.1%	37.3%	43.1%	44.2%	36.0%	36.5%	35.5%	36.0%
Durant Road Elementary	10.0%	7.3%	7.7%	6.0%	6.4%	6.1%	11.3%	12.3%	14.9%
Farmington Woods Elementary	24.6%	21.8%	32.4%	32.6%	30.7%	28.3%	23.7%	19.2%	19.3%
Fox Road Elementary	30.8%	35.1%	30.0%	30.5%	29.5%	31.3%	34.8%	37.1%	44.0%
Fuller Elementary	28.1%	34.6%	26.3%	26.0%	21.2%	24.7%	29.2%	35.6%	38.7%
Fuquay-Varina Elementary	21.2%	29.6%	27.1%	23.9%	26.5%	26.7%	33.2%	32.8%	37.1%
Green Elementary	25.9%	8.8%	9.2%	9.6%	7.8%	11.4%	16.1%	15.3%	23.9%
Green Hope Elementary						2.6%	2.5%	3.5%	3.9%
Heritage Elementary		5.7%	7.2%	8.3%	5.7%	6.5%	9.9%	10.0%	12.9%
Hilburn Drive Elementary		19.0%	23.0%	19.1%	15.5%	15.9%	13.8%	14.2%	19.2%
Hodge Road Elementary	34.5%	42.9%	40.4%	33.2%	35.2%	41.3%	48.1%	46.9%	50.6%
Holly Springs Elementary		38.3%	29.5%	26.1%	20.8%	20.7%	24.2%	24.6%	20.3%
Hunter Elementary	21.3%	22.5%	25.9%	24.5%	22.4%	27.5%	25.5%	24.0%	24.6%
Jeffreys Grove Elementary	29.2%	31.6%	30.6%	30.7%	26.0%	34.0%	32.0%	36.0%	34.5%
Joyner Elementary	20.8%	23.9%	21.4%	18.4%	21.7%	34.6%	44.0%	41.1%	40.1%
Kingswood Elementary	8.4%	11.0%	15.1%	13.5%	16.6%	20.3%	26.3%	27.3%	29.1%
Knightdale Elementary	28.9%	36.9%	35.3%	37.5%	34.8%	38.2%	45.0%	46.8%	49.7%
Lacy Elementary	25.5%	30.0%	31.2%	33.8%	33.2%	33.4%	30.3%	25.1%	24.4%
Lead Mine Elementary	10.5%	14.3%	14.6%	18.7%	25.7%	30.1%	36.8%	36.8%	40.6%
Leesville Road Elementary	17.8%	17.5%	13.5%	14.0%	17.8%	7.8%	14.4%	13.4%	14.7%
Lincoln Heights Elementary	31.9%	33.2%	37.7%	29.9%	22.9%	25.6%	25.4%	26.3%	26.1%
Lockhart Elementary	32.4%	35.6%	36.2%	34.9%	37.4%	38.5%	45.9%	43.4%	43.6%
Lynn Road Elementary	24.2%	25.8%	22.9%	21.4%	25.2%	30.8%	34.6%	35.9%	38.2%
Middle Creek Elementary						31.8%	33.2%	24.2%	23.1%

<u>Name</u>	<u>1995</u>	<u>1996</u>	<u>1997</u>	<u>1998</u>	<u>1999</u>	<u>2000</u>	<u>2001</u>	<u>2002</u>	<u>2003</u>
Millbrook Elementary	28.0%	44.6%	34.7%	35.7%	32.0%	37.9%	39.8%	40.6%	47.9%
Morrisville Elementary	4.6%	5.0%	4.7%	2.7%	2.6%	3.4%	7.2%	8.5%	7.8%
North Ridge Elementary	17.9%	26.1%	26.3%	28.3%	25.9%	29.7%	31.0%	36.1%	30.3%
Northwoods Elementary	12.1%	12.1%	13.9%	9.7%	9.4%	17.1%	16.0%	17.7%	18.1%
Oak Grove Elementary	4.4%	4.7%	6.8%	3.7%	3.6%	4.1%	3.8%	11.1%	10.1%
Olds Elementary	24.7%	28.7%	22.1%	18.9%	19.3%	16.5%	14.7%	17.7%	23.9%
Olive Chapel Elementary			14.7%	8.9%	7.2%	8.3%	9.0%	8.3%	6.6%
Partnership Elementary				4.4%	5.7%	11.2%	12.7%	16.9%	15.4%
Penny Road Elementary	17.8%	13.8%	20.9%	27.1%	19.8%	24.7%	25.6%	22.7%	23.5%
Pleasant Union Elementary	7.2%	8.1%	6.4%	6.7%	7.6%	8.8%	11.8%	11.5%	13.2%
Poe Elementary	70.4%	49.5%	50.8%	25.0%	30.0%	25.7%	28.2%	31.1%	33.7%
Powell Elementary	26.6%	38.9%	32.4%	25.8%	30.4%	35.0%	38.5%	38.1%	42.7%
Rand Road Elementary	30.8%	34.5%	35.8%	37.9%	40.6%	42.5%	34.1%	32.0%	34.1%
Reedy Creek Elementary					23.1%	26.0%	27.4%	29.4%	34.4%
Rolesville Elementary	18.8%	29.3%	30.1%	27.4%	31.0%	34.1%	35.6%	34.8%	35.1%
Root Elementary	27.3%	34.7%	29.0%	26.5%	25.7%	27.3%	22.9%	19.6%	25.9%
Salem Elementary						14.8%	13.5%	16.1%	14.5%
Smith Elementary	42.4%	47.0%	46.4%	42.0%	45.6%	55.7%	53.0%	54.6%	58.1%
Stough Elementary	27.2%	29.5%	25.9%	19.4%	18.8%	26.4%	29.3%	32.3%	36.8%
Swift Creek Elementary	10.9%	12.7%	17.2%	21.6%	20.7%	28.0%	34.7%	38.4%	35.0%
Timber Drive Elementary			13.9%	10.3%	8.9%	9.7%	17.4%	23.6%	23.0%
Underwood Elementary	23.4%	22.5%	24.3%	25.9%	25.9%	31.7%	34.7%	37.1%	33.5%
Vance Elementary	33.9%	42.5%	39.6%	33.0%	34.7%	43.0%	44.0%	37.0%	35.1%
Vandora Springs Elementary	29.9%	36.0%	43.1%	41.8%	39.4%	41.4%	45.1%	40.8%	48.5%
Wake Forest Elementary	29.6%	33.8%	33.8%	31.9%	29.5%	34.0%	33.3%	32.7%	31.4%
Wakefield Elementary					17.4%	22.2%	21.4%	17.4%	17.2%
Washington Elementary	32.9%	32.6%	32.5%	30.1%	29.3%	26.8%	28.8%	28.1%	28.3%
Weatherstone Elementary	20.8%	21.0%	19.7%	16.2%	12.8%	23.3%	19.5%	20.4%	18.7%
Wendell Elementary	39.2%	38.6%	38.0%	44.0%	40.6%	41.3%	45.6%	42.4%	46.8%
West Lake Elementary	6.1%	6.6%	6.8%	7.8%	7.2%	5.1%	13.0%	14.8%	16.5%
Wilburn Elementary	29.3%	32.2%	29.9%	29.1%	29.5%	36.8%	38.7%	44.6%	51.7%
Wildwood Forest Elementary					24.7%	24.4%	22.2%	26.3%	29.3%
Wiley Elementary	32.3%	40.5%	33.1%	35.9%	30.8%	36.6%	32.1%	32.5%	31.9%
Willow Springs Elementary	27.5%	29.3%	30.8%	26.8%	24.2%	30.3%	29.3%	29.5%	32.1%
Yates Mill Pond Elementary						29.3%	29.4%	30.6%	34.1%
York Elementary	21.0%	23.0%	21.3%	19.9%	22.6%	26.5%	29.7%	30.3%	30.6%
Zebulon Elementary	49.3%	55.8%	49.6%	51.1%	48.4%	49.4%	52.4%	50.8%	55.2%

<u>Name</u>	<u>1995</u>	<u>1996</u>	<u>1997</u>	<u>1998</u>	<u>1999</u>	<u>2000</u>	<u>2001</u>	<u>2002</u>	<u>2003</u>
	Middle Schools								
Apex Middle	13.0%	17.9%	17.4%	16.8%	15.5%	16.5%	15.7%	14.8%	13.0%
Carnage Middle	24.4%	26.8%	26.7%	24.6%	24.9%	22.9%	27.5%	26.6%	30.1%
Carroll Middle	25.2%	25.5%	30.2%	25.6%	24.5%	29.4%	35.4%	36.6%	38.0%
Centennial Middle						28.0%	30.5%	28.3%	26.7%
Daniels Middle	27.5%	30.2%	26.5%	26.6%	25.1%	26.2%	27.1%	28.3%	28.1%
Davis Drive Middle		15.1%	10.5%	10.1%	7.8%	9.3%	10.0%	8.3%	8.7%
Dillard Dr. Middle					14.9%	20.8%	21.3%	23.1%	26.2%
Durant Road Middle	9.6%	9.6%	10.4%	10.2%	8.5%	10.1%	12.5%	15.7%	19.2%
East Garner Middle	19.3%	24.6%	24.4%	26.2%	23.3%	28.4%	31.6%	36.6%	43.1%
East Millbrook Middle	21.7%	29.9%	27.2%	27.1%	21.7%	26.3%	28.0%	31.8%	34.8%
East Wake Middle	26.8%	30.2%	32.6%	32.9%	32.1%	37.9%	39.8%	40.2%	43.6%
Fuquay-Varina Middle	26.0%	27.4%	27.3%	25.6%	22.7%	25.4%	23.9%	24.6%	27.9%
Leesville Road Middle	14.7%	14.2%	13.2%	13.7%	13.2%	13.6%	15.0%	17.6%	17.4%
Ligon Middle	22.9%	22.1%	24.2%	20.6%	17.5%	18.7%	18.9%	15.6%	14.0%
Lufkin Rd. Middle					1.6%	3.5%	7.2%	8.5%	9.8%
Martin Middle	18.9%	18.3%	16.9%	17.8%	16.2%	16.9%	20.9%	20.8%	21.5%
Moore Square Middle								32.4%	32.1%
North Garner Middle	27.0%	31.1%	30.7%	30.5%	35.2%	42.5%	43.1%	42.5%	43.5%
Reedy Creek Middle	11.6%	10.0%	11.5%	11.5%	16.3%	20.0%	20.5%	26.3%	31.7%
Wake Forest-Rolesville Midd	17.8%	20.6%	22.3%	20.0%	21.7%	26.8%	28.9%	27.9%	30.1%
Wakefield Middle						10.7%	11.5%	11.6%	11.2%
West Cary Middle	13.1%	12.0%	15.5%	12.4%	13.2%	13.7%	13.8%	13.5%	12.1%
West Lake Middle	6.8%	7.1%	6.9%	5.3%	4.9%	5.1%	8.8%	10.9%	13.6%
West Millbrook Middle	16.6%	18.1%	23.3%	25.2%	21.5%	23.1%	25.7%	28.8%	29.6%
Zebulon Middle	35.0%	36.8%	38.0%	32.4%	33.2%	34.0%	35.7%	38.6%	40.1%

<u>Name</u>	<u>1995</u>	<u>1996</u>	<u>1997</u>	<u>1998</u>	<u>1999</u>	<u>2000</u>	<u>2001</u>	<u>2002</u>	<u>2003</u>
	High Schools								
Apex High	5.2%	4.7%	4.9%	5.3%	4.8%	6.3%	5.7%	7.0%	6.7%
Athens Drive High	13.6%	14.2%	14.6%	12.1%	10.6%	11.6%	10.2%	12.4%	15.6%
Broughton High	12.6%	13.2%	13.2%	13.8%	13.5%	11.4%	12.5%	12.6%	14.2%
Cary High	9.4%	8.9%	8.5%	9.1%	9.6%	10.7%	12.8%	13.4%	14.3%
East Wake High	19.3%	16.9%	20.1%	18.9%	18.2%	21.4%	24.6%	24.8%	25.9%
Enloe High	10.5%	11.9%	11.5%	11.3%	10.5%	11.7%	13.0%	13.7%	15.1%
Fuquay-Varina High	13.0%	12.7%	15.1%	12.1%	10.2%	11.7%	12.0%	12.4%	14.0%
Garner High	12.6%	13.0%	11.6%	12.1%	12.2%	15.8%	17.5%	19.1%	23.9%
Green Hope High					4.8%	3.5%	4.3%	4.9%	4.5%
Leesville Road High	8.1%	7.0%	6.9%	6.5%	5.4%	6.7%	7.5%	8.2%	10.1%
Middle Creek High								16.7%	16.2%
Millbrook High	9.9%	10.2%	10.4%	10.4%	9.3%	12.6%	15.1%	16.2%	18.5%
Sanderson High	14.8%	14.3%	16.0%	13.2%	12.1%	14.8%	15.7%	20.0%	20.8%
Southeast Raleigh High			13.1%	10.0%	8.8%	8.0%	9.2%	13.2%	17.0%
Wake Forest-Rolesville High	9.5%	10.5%	12.1%	11.1%	10.5%	12.5%	12.5%	13.1%	14.8%
Wakefield High						8.6%	8.0%	9.4%	11.9%

<u>Name</u>	<u>1995</u>	<u>1996</u>	<u>1997</u>	<u>1998</u>	<u>1999</u>	<u>2000</u>	<u>2001</u>	<u>2002</u>	<u>2003</u>
	Special and Optional Schools								
Longview School	82.2%	79.6%	65.0%	74.1%	69.5%	61.0%	61.3%	49.5%	
Mary E. Phillips High	21.6%	29.1%	26.9%	40.4%	24.8%	17.4%	31.7%	43.0%	
Milburn, Richard High									
Mt. Vernon	6.8%	72.2%	70.0%	73.9%	66.7%	53.2%	73.6%	64.6%	