



## End-of-Grade Multiple-Choice Test Results: 2002-03

July, 2003

*Authors: Chuck Dulaney and Roger Regan*

### Background

Wake County Public School System (WCPSS) students in grades 3 through 8 took the North Carolina End-of-Grade (EOG) multiple-choice tests during the months of May and June. Traditional calendar schools tested the week of May 22-26 and year-round schools tested the week of June 19-23.

The EOG tests have several components, including computer skills, open-ended tests, multiple-choice tests, and the writing assessment. All EOG tests are designed to measure student mastery of the knowledge and skills of the North Carolina Standard Course of Study for students in grades 3 through 8. The multiple-choice tests are required in reading and math and are optional in social studies and science. During the May/June 2003 administration, WCPSS students took the reading and math multiple-choice tests.

The EOG tests are a vital part of the North Carolina Annual Testing Program. They are the basis for the accountability program referred to as “ABCs”—Accountability, Basics, and Control. EOG test results also will be used to determine whether schools have made Adequate Yearly Progress (AYP), a new standard required by the federal No Child Left Behind (NCLB) law. An analysis of WCPSS’s AYP results will be published in a separate report later this summer.

### Districtwide Results

For the first time in the WCPSS history, the percentage of all EOG exam scores at or above grade level (Level III or IV) surpassed 90% in 2003. The composite percentage, which includes reading and math scores for all grade 3-8 students, rose from 89.4% in 2002 to 91.3% this year.

In reading, the percentage of all grade 3-8 students scoring at or above grade level increased from 88.0% in 2002 to 90.4% in 2003. In math, the percentage climbed from 90.8% to 92.3%. More than 85% of students met or exceeded grade-level standards in both reading and math at all grade levels.

### Disaggregated Results

Gains in reading and math were shown by almost all major student groups at all grade levels (see figures 19 and 20). As was the case in 2002, the largest gains were made by previously lower-performing groups. For students participating in the free/reduced-price lunch (FRL) program, the percentage that met or exceeded grade-level standards rose 6.4 percentage points in reading and 4.6 points in math, further narrowing the achievement gap between this group and all other students (see figures 15 and 16).

### CONTENTS

EOG Scores by Achievement Level -----p. 2-5  
 Results by Grade Level -----p. 6-9  
 Disaggregated Results -----p. 10-19  
 School-by-School Results -----Attachment

### Achievement Level Scores

The achievement level score attempts to categorize student achievement according to four broad levels, defined by the North Carolina Department of Public Instruction (NCDPI) as follows:

#### Achievement Levels

**Level I:** Students performing at this level do not have sufficient mastery of knowledge and skills in this subject area to be successful at the next grade level.

**Level II:** Students performing at this level demonstrate inconsistent mastery of knowledge and skills in this subject area, and are minimally prepared to be successful at the next grade level.

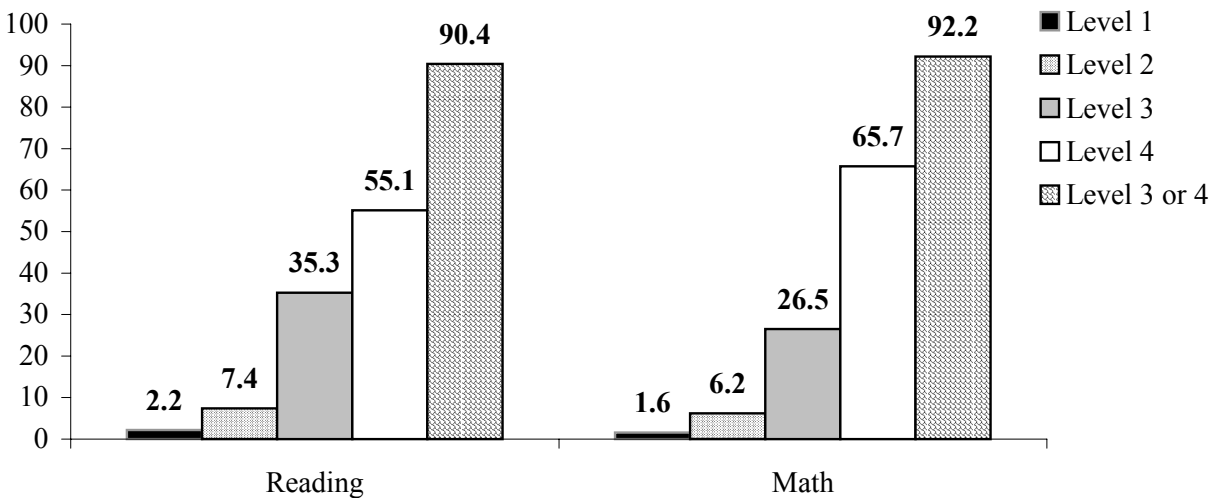
**Level III:** Students performing at this level consistently demonstrate mastery of grade level subject matter and skills and are well prepared for the next grade level.

**Level IV:** Students performing at this level consistently perform in a superior manner clearly beyond that required to be proficient at grade-level work.

#### 2002-03 EOG Scores by Achievement Level

An analysis of all grade 3-8 EOG scores by achievement level shows that on each test, a majority of students attained a Level 4 (55.1% in reading and 65.7% in math) in 2003. When these percentages are combined with those for Level 3, the results show that 90.4% of students met or exceeded grade-level standards in reading, and 92.2% in math. (See figure 1 below.)

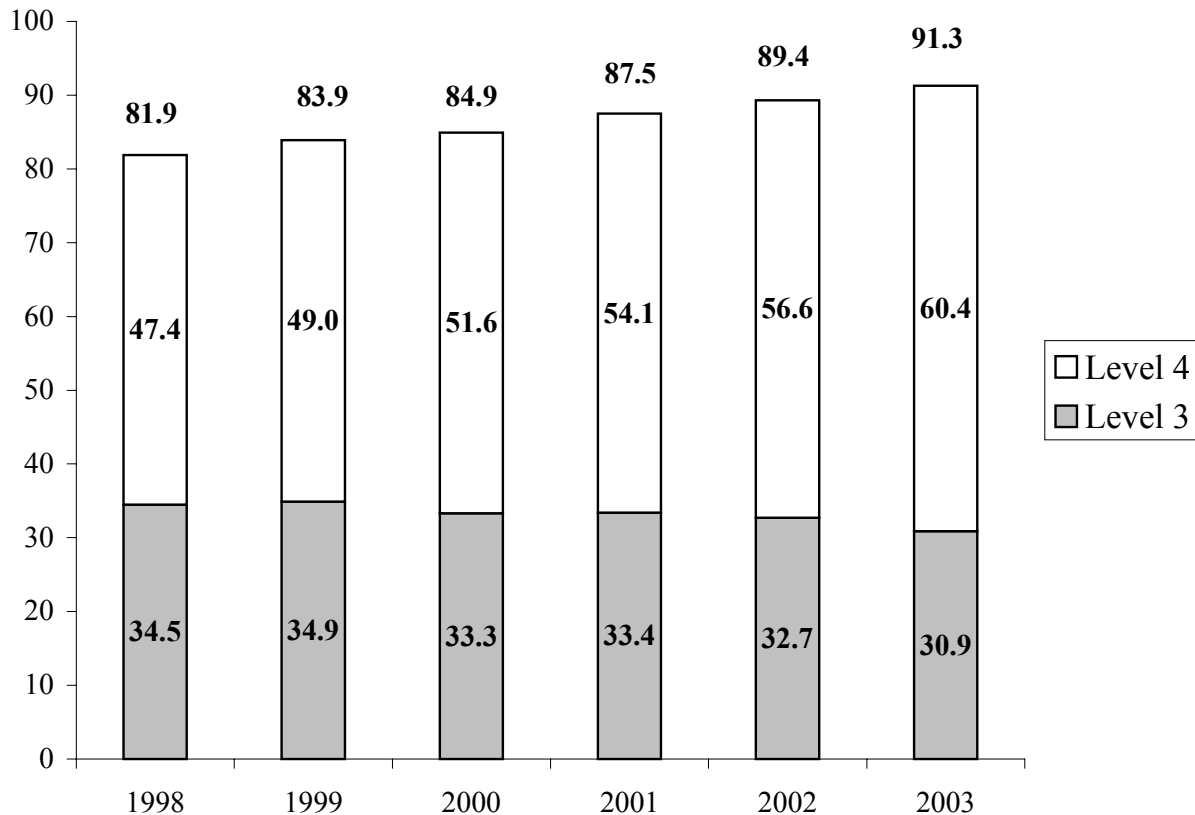
**Figure 1**  
**Percent of All Grade 3-8 Reading and Math EOG Scores**  
**by Achievement Level 2002-03**



### Composite Percentages over Time

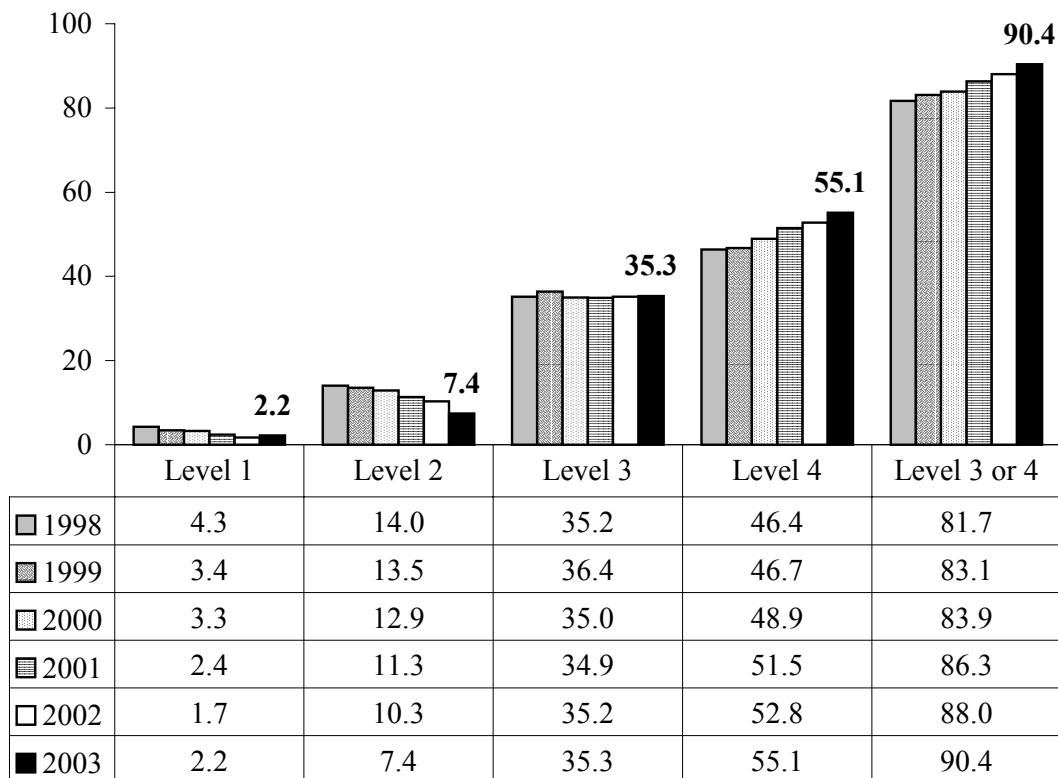
Figure 2 below shows the composite percentages of all grade 3-8 EOG scores meeting or exceeding grade level standards in reading and math over the past six years. Scores are calculated separately for each test and then added together to derive these statistics. The composite percentage of Level 3 and 4 scores rose 1.9 percentage points, from 89.4% in 2002 to 91.3% in 2003. The proportion of Level 4 scores also increased from 56.6% in 2002 to 60.4% in 2003. Since 1998, the composite percentage of reading and math scores at or above grade level has risen 9.4 percentage points, and the percentage of Level 4 scores has risen 13 points.

**Figure 2**  
**Composite Percentages of All EOG Scores At/Above Grade Level**  
**Reading and Math, 1998-2003**



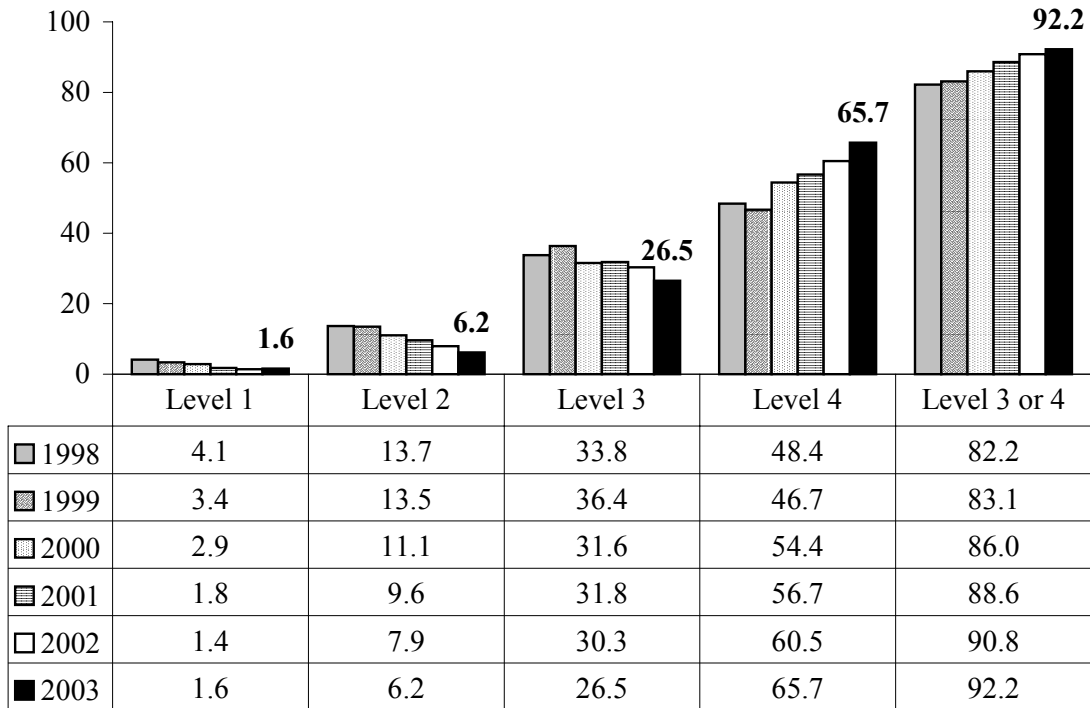
Looking at reading and math separately, the overall share of Level 1 and Level 2 scores continued to decline in both exams, as more students achieved Level 4 scores. In reading, the combined percentage of Level 1 and 2 scores decreased from 12.0% of the total in 2002 to 9.6% in 2003. Meanwhile, the percentage of Level 3 scores stayed basically the same (increasing from 35.2% to 35.3%), while the percentage of Level 4 scores rose from 52.8% in 2002 to 55.1% in 2003 (see Figure 3).

**Figure 3**  
**Percent of All Grade 3-8 Reading EOG Scores**  
**by Achievement Level, 1998-2003**



As shown in Figure 4, on the math EOG, the proportion of Level 1 and Level 2 scores fell from 9.3% in 2002 to 7.8% in 2003. Level 3 scores also declined (from 30.3% to 26.5%), but the share of Level 4 scores increased from 60.5% in 2002 to 65.7% in 2003.

**Figure 4**  
**Percent of All Grade 3-8 Math EOG Scores**  
**by Achievement Level, 1998-2003**



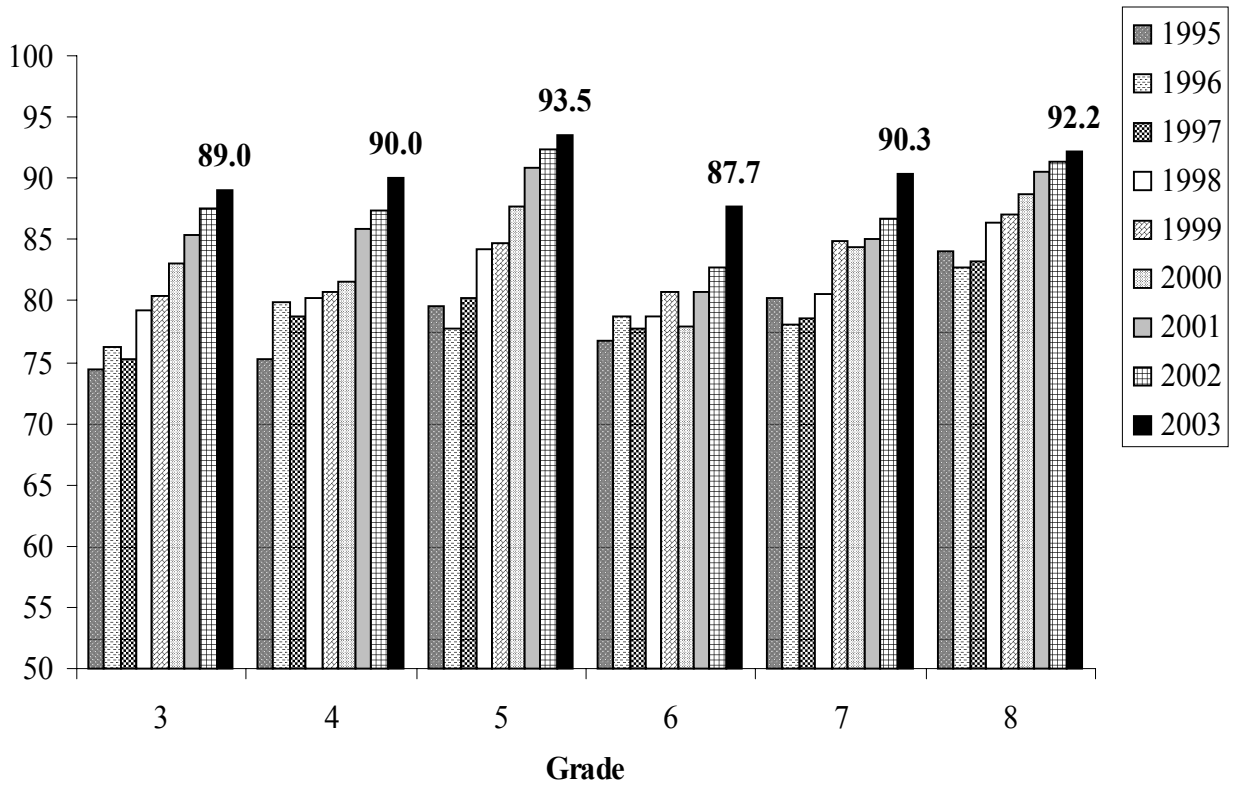
### Achievement Growth over Time by Grade Level & Cohort

The percentages of students scoring at or above grade level on the 2003 EOG exams are the highest they have ever been for most grade levels in both reading and math. More than 90% of students met or exceeded grade-level standards in reading in grades 4, 5, 7, and 8, and in math in grades 3 through 6. The highest level of achievement was shown in grade 4 math (96.3%), while the lowest was seen in grade 6 reading (87.7%). The only exception to the pattern of achievement growth occurred in grade 7 math, where the percentage of students scoring at or above grade level declined from 90.3% in 2002 to 87.9% in 2003.

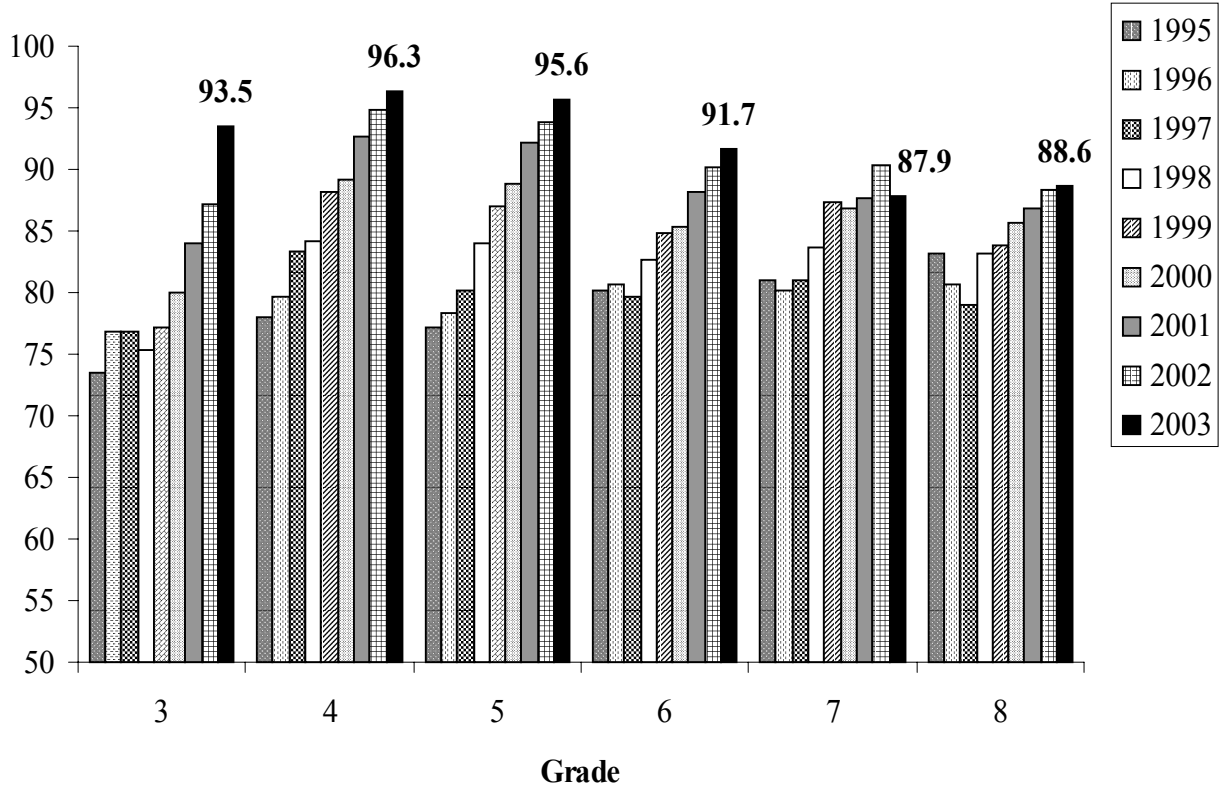
### Changes Within Grade Levels over Time

By comparing scores for a grade level to scores achieved in previous years, we see some indication of instructional changes over time, although it must be noted that different groups of students are in each grade level each year. The following graphs (Figures 5 and 6) show changes within each grade level over the past nine years.

**Figure 5**  
**Percent of WCPSS Students at/above Grade Level in Reading**  
**by Grade, 1995-2003**



**Figure 6**  
**Percent of WCPSS Students At/Above Grade Level in Mathematics**  
**By Grade, 1995-2003**



## Achievement Growth by Cohort

One important way of examining test scores is to follow the progress of a cohort of students over time. The shaded boxes in the tables below (Figures 7 and 8) show the scores of different cohorts of students. For example, one cohort of students was in 3<sup>rd</sup> grade in 1998 and completed 8<sup>th</sup> grade in 2003. Over time, the percentage of students in that cohort who were in levels III and IV, and therefore considered to be “at or above grade level,” in reading increased from 79.3% to 92.2%.

**Figure 7**  
**WCPSS Reading Achievement Levels over Time**  
**Percentage of Students at Levels III and IV (1994-2003)**

	1994	1995	1996	1997	1998	1999	2000	2001	2002	2003
<b>3</b>	71.4	74.4	76.3	75.3	79.3	80.4	83.1	85.3	87.6	89.0
<b>4</b>	76.9	75.2	79.9	78.7	80.3	80.8	81.6	85.9	87.4	90.0
<b>5</b>	76.9	79.6	77.7	80.3	84.3	84.8	87.7	90.8	92.3	93.5
<b>6</b>	73.5	76.8	78.8	77.8	78.8	80.7	77.9	80.7	82.8	87.7
<b>7</b>	76.2	80.2	78.1	78.6	80.5	84.9	84.4	85.1	86.7	90.3
<b>8</b>	78.7	84.0	82.8	83.3	86.4	87.1	88.7	90.6	91.4	92.2

Math achievement for the cohort of students that was in 3<sup>rd</sup> grade in 1998 and completed 8<sup>th</sup> grade in 2003 shows growth over time but declines in 6<sup>th</sup> grade and 8<sup>th</sup> grade. The percentage of students in that cohort who were in levels III and IV, and therefore considered to be “at or above grade level,” in math increased from 75.4% to 88.6%.

**Figure 8**  
**WCPSS Mathematics Achievement Levels over Time**  
**Percentage of Students at Levels III and IV (1994-2003)**

	1994	1995	1996	1997	1998	1999	2000	2001	2002	2003
<b>3</b>	71.8	73.5	76.9	76.8	75.4	77.1	80.0	84.0	87.1	93.5
<b>4</b>	77.9	78.0	79.6	83.3	84.1	88.1	89.2	92.7	94.8	96.3
<b>5</b>	76.5	77.2	78.3	80.2	84.0	87.0	88.9	92.1	93.8	95.6
<b>6</b>	77.8	80.1	80.7	79.7	82.7	84.8	85.3	88.1	90.2	91.7
<b>7</b>	77.8	81.0	80.2	81.0	83.7	87.3	86.8	87.6	90.3	87.9
<b>8</b>	74.3	83.2	80.6	79.0	83.2	83.8	85.7	86.9	88.3	88.6



### Scale Scores

The EOG scale scores were developed by staff at the Thurstone Psychometric Laboratory at UNC-Chapel Hill. Scale scores cover the entire span from grade 3 through grade 10, and are designed to show growth over time. The scales were originally designed to begin near 100 and end near 200 with a mean of approximately 150 (anchored at the 5<sup>th</sup> grade). Mean (average) scale scores for cohorts are expected to increase as students move through grade levels and are an important way to track group changes from year to year.

New reading scale scores were developed by NCDPI and used for reporting results on new reading tests administered in 2002-03. The new tests were linked to changes in the standard course of study, and the new scale range goes from 213 to 290, and. The math scale scores were recalibrated and implemented in 2000-2001. The math scale range goes from 211 to 310. Figures 9 and 10 show mean scale scores in reading and math by grade level.

**Figure 9**  
**WCPSS Reading Scale Score Means, 1996-2003**

<b>Grade</b>	<b>1996</b>	<b>1997</b>	<b>1998</b>	<b>1999</b>	<b>2000</b>	<b>2001</b>	<b>2002</b>	<b>2003</b>
<b>3</b>	147.0	146.9	148.2	148.7	149.6	150.2	150.9	250.6
<b>4</b>	151.7	151.6	152.4	152.3	152.9	154.1	154.4	255.0
<b>5</b>	155.0	155.9	157.2	157.1	158.4	159.0	159.4	259.6
<b>6</b>	158.4	158.6	158.5	159.4	158.9	159.8	160.3	261.1
<b>7</b>	160.8	161.0	161.7	162.4	162.4	162.7	163.0	263.6
<b>8</b>	162.9	163.6	164.4	164.7	165.0	165.8	165.9	266.6

\* Note: Reading scale score ranges were recalculated by NCDPI in 2003. Comparisons to previous years are not valid.

**Figure 10**  
**WCPSS Math Scale Score Means, 1996-2003**

<b>Grade</b>	<b>1996</b>	<b>1997</b>	<b>1998</b>	<b>1999</b>	<b>2000</b>	<b>2001</b>	<b>2002</b>	<b>2003</b>
<b>3</b>	144.7	145.3	144.9	145.3	146.8	253.7	254.6	255.6
<b>4</b>	151.4	152.6	154.0	155.0	155.9	259.1	259.9	261.4
<b>5</b>	158.2	159.5	160.1	161.9	163.0	263.8	264.9	265.7
<b>6</b>	164.9	165.1	166.1	167.1	167.8	266.1	267.1	268.1
<b>7</b>	170.7	171.8	172.5	173.7	174.2	270.5	271.8	271.2
<b>8</b>	175.5	175.4	177.4	177.5	178.4	273.7	274.6	274.6

\* Note: Math scale score ranges were recalculated by NCDPI in 2001. Comparisons to years prior to 2001 are not valid.

## Disaggregated Results

WCPSS disaggregates EOG results for different groups of students. The most common groupings are based on gender, race, FRL status, and special education classification. Figures 18 and 19 show reading and math results for 2002-03 compared to 2001-02.

Almost all major student groups showed gains in both reading and math at all grade levels, with the exception of grade 7 math. The largest gains in the percentage of students at or above grade level were made by previously lower-performing groups. Following are summaries of the improvements for these subgroups of students. Additional analyses of disaggregated data, including progress in closing the achievement gap, are presented on pages 12-17.

### Increase in Number of Students Tested

The number of Grade 3-8 WCPSS students taking EOG exams increased at a substantially higher rate in 2002-03 than in the previous five years. Two factors explain a large part of this growth: the elimination of exemptions for Limited English Proficient (LEP) students as required by the federal NCLB law; and the fact that the state did not offer a computer adaptive alternative assessment for special education students in 2002-03. In all, approximately 1,700 additional students took an EOG test in 2002-03 who would not have been tested in 2001-02. Seven hundred were no longer exempted by their LEP status, and approximately 1,000 could not take the computer adaptive test as they had in 2001-02.

As shown in Figure 11, the *average* annual increase in the total number of EOG tests from 1997-98 to 2001-02 was 2.5 percent. From 2001-02 to 2002-03, however, the total increased by 6.0 percent. Looking at selected subgroups of students by race and ethnicity, the largest year-to-year percentage increase in the number of tests taken occurred among Hispanic/Latino students (33.4%) and Multiracial students (28.3%). In absolute terms, however, the increase among Black students (11%, or 2704 tests) was the highest of all racial groups and nearly as high as the increases among all groups combined. Disaggregation by FRL status shows that the number of students from lower-income families increased by 19.2% in 2002-03, almost five-times the average annual rate of growth for this group over the previous five years. Similarly, the number of students participating in special education programs (excluding the academically gifted program) rose at a much higher rate than in previous years (19.6% in 2002-03 vs. 3% percentage per year from 1997-98 to 2001-02).

As a result of these sharp increases, the share of all EOG tests accounted for by these selected student subgroups rose as well. As shown in Figure 12, the proportion of all EOG tests taken by Black students increased from 26.6% in 2001-02 to 27.9% in 2002-03. Hispanic/Latino students increased their share of all tests from 4.3% in 2001-02 to 5.4% in 2002-03. Students receiving FRL accounted for 21.9% of all tests in 2001-02, but 24.6% in 2002-03. The proportion taken by students participating in special education programs (not including academically gifted) increased from 13.8% in 2001-02 to 15.6% in 2002-03.

**Figure 11**  
**Total EOG Exams (Reading and Math) by Selected Student SubGroups**  
**1998-2003**

	1998	1999	2000	2001	2002	2003	Average Annual % Growth 1998-2002	Percent Growth 2002-2003
<b>All Grade 3-8 Students</b>	82482	85307	87949	90493	92685	98234	<b>2.5%</b>	<b>6.0%</b>
<b>White</b>	56587	57480	58190	58293	58322	58825	<b>0.6%</b>	<b>0.9%</b>
<b>Black</b>	20908	21771	22577	23678	24673	27377	<b>3.6%</b>	<b>11.0%</b>
<b>Asian</b>	2513	2866	3134	3403	3541	3982	<b>8.2%</b>	<b>12.5%</b>
<b>Hispanic/Latino</b>	1798	2161	2638	3384	4003	5340	<b>24.5%</b>	<b>33.4%</b>
<b>Am. Indian</b>	187	212	244	262	254	282	<b>7.2%</b>	<b>11.0%</b>
<b>Multiracial</b>	489	817	1166	1473	1892	2428	<b>57.4%</b>	<b>28.3%</b>
<b>Not FRL</b>	65171	67670	69949	72013	72387	74035	<b>2.2%</b>	<b>2.3%</b>
<b>FRL</b>	17311	17637	18000	18480	20298	24199	<b>3.5%</b>	<b>19.2%</b>
<b>Not Spec. Ed.</b>	54579	56160	57731	59784	60333	62528	<b>2.1%</b>	<b>3.6%</b>
<b>Special Ed.</b>	11161	11843	12143	12529	12816	15323	<b>3.0%</b>	<b>19.6%</b>
<b>Acad. Gifted</b>	16742	17304	18075	18180	19536	20383	<b>3.3%</b>	<b>4.3%</b>

**Figure 12**  
**Composition of All Grade 3-8 EOG Test-takers**  
**by Demographic and Other Selected Characteristics, 2002-03**

	2002	2003		2002	2003		2002	2003
White	62.3	59.9	Not FRL	78.1	75.4	Not Special Ed.	65.1	63.7
Black	26.6	27.9	FRL	21.9	24.6	Special Ed.	13.8	15.6
Asian	3.8	4.1				Acad. Gifted	21.1	20.7
Hispanic/Latino	4.3	5.4						
Am. Indian	.3	.3						
Multiracial	2.0	2.5						
All Grade 3-8 Students	100%	100%	All Students	100%	100%	All Students	100%	100%

***Students Participating in the Free or Reduced-Price Lunch (FRL) Program***

Historically, students from economically disadvantaged families have scored lower as a group on EOG tests than students from middle- and upper-income families. WCPSS uses eligibility for the federal government's free or reduced-price lunch program as its measure of family income. Results in 2002-03 show that the percentage of all grade 3-8 students participating in FRL that met or exceeded grade level standards rose 6.4 percentage points in reading and 4.6 percentage points in math compared to last year's results. Since 1997-98, the proportion of these students at or above grade level has risen 21.1 percentage points in reading (from 53.8% in 1997-98 to 74.9% in 2002-03). In math, the percentage has increased 25.3 percentage points (from 54.6% in 1997-98 to 79.9% in 2002-03).

### ***Black Students***

Significant improvements in achievement also are noteworthy when results are disaggregated by race. The percentage of Black students meeting or exceeding grade-level standards in reading and math rose at every level except grade 7 math. The percentage of all grade 3-8 Black students scoring at or above grade level increased 6.6 percentage points to 78.3% in reading in 2002-03. In math, the overall passing percentage climbed 4.5 percentage points to 81.3%. Compared to last year, the largest gains occurred in grade 3 math (up 14.8 percentage points), and in grades 6 and 7 reading (up 10.8 and 8.9 percentage points, respectively).

### ***Hispanic/Latino Students***

Overall test results for Hispanic/Latino students also show improvement over the previous year. The percentage of all grade 3-8 Hispanic/Latino students scoring at or above grade level increased 4.1 percentage points in reading (from 74.1% to 78.2%) and 3.9 percentage points in math (from 83.3% to 87.2%). As in the case of Black students, the largest gains were shown in grade 3 math (up 11.7 percentage points) and grades 6 and 7 reading (up 11 and 8.4 percentage points, respectively).

### ***Special Education Students***

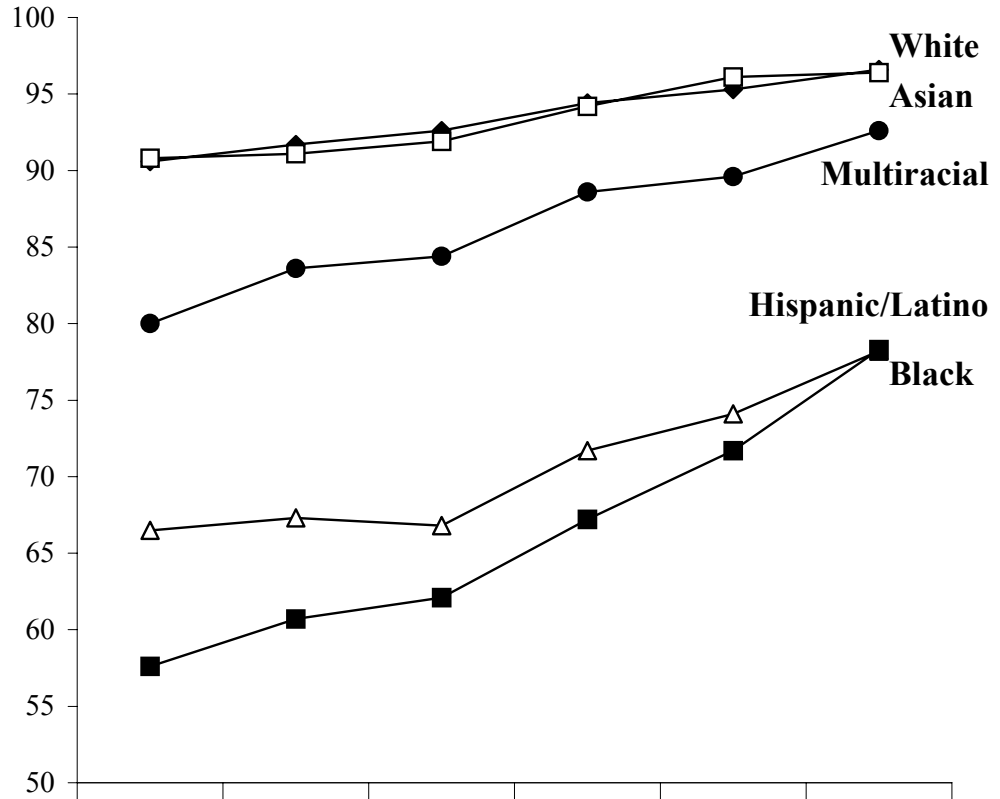
The overall percentage of special education students meeting or exceeding grade-level standards declined by less than a half percentage point in reading (68.9% in 2002-03 compared to 69.3% in 2001-02) and 1.8 percentage points in math. These relatively minor drops occurred despite the addition of approximately 1,000 students who had taken the computer adaptive exam in 2001-02, but took the regular EOG in 2002-03. The largest declines were in grade 7 math (-9.4 percentage points) and grade 3 reading (-4.9 points). The overall passing percentage increased in reading in grades 4, 6, and 7, and in math in grades 3 and 5.

## **EOG Results by Race and Ethnicity, 1998-2003**

Figures 13 and 14 show the performance of all grade 3-8 students from 1998 to 2003 disaggregated by race and ethnicity. Despite several slight declines in 2002, all of the subgroups have exhibited achievement growth in both reading and math over the six-year period.

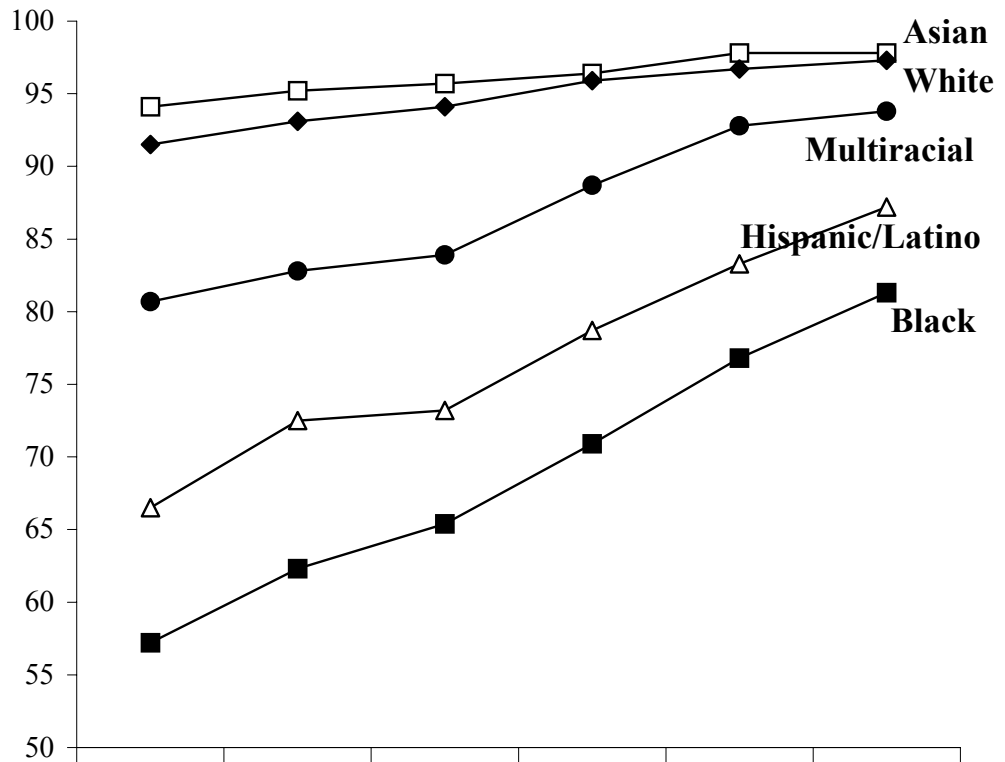
The achievement gap between Black and Hispanic/Latino students on the one hand, and White and Asian students on the other, continued to narrow in 2003. The gap between Black students and White students shrank 5.3 percentage points in reading and 3.9 points in math. Since 1998, the difference between the two groups has narrowed from 33 percentage points to 18.3 points in reading, and from 34.3 percentage points to 16 points in math.

**Figure 13**  
**Percent of All Grade 3-8 Students at/above Grade Level**  
**in Reading by Race and Ethnicity, 1998-2003**



	1998	1999	2000	2001	2002	2003
—◆— White	90.6	91.7	92.6	94.4	95.3	96.6
—□— Asian	90.8	91.1	91.9	94.2	96.1	96.4
—●— Multiracial	80.0	83.6	84.4	88.6	89.6	92.6
—△— Hispanic/Latino	66.5	67.3	66.8	71.7	74.1	78.2
—■— Black	57.6	60.7	62.1	67.2	71.7	78.3

**Figure 14**  
**Percent of All Grade 3-8 Students at/above Grade Level**  
**in Math by Race and Ethnicity, 1998-2003**

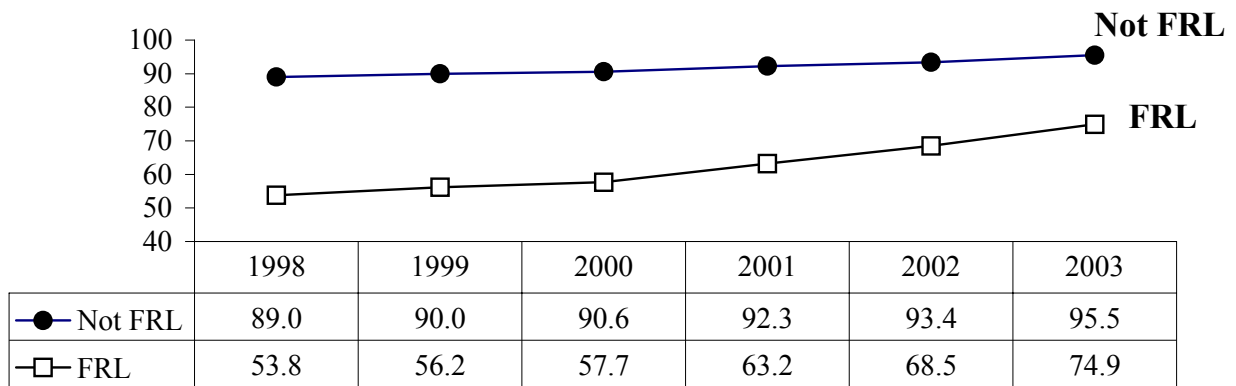


	1998	1999	2000	2001	2002	2003
—□— Asian	94.1	95.2	95.7	96.4	97.8	97.8
—◆— White	91.5	93.1	94.1	95.9	96.7	97.3
—●— Multiracial	80.7	82.8	83.9	88.7	92.8	93.8
—△— Hispanic/Latino	66.5	72.5	73.2	78.7	83.3	87.2
—■— Black	57.2	62.3	65.4	70.9	76.8	81.3

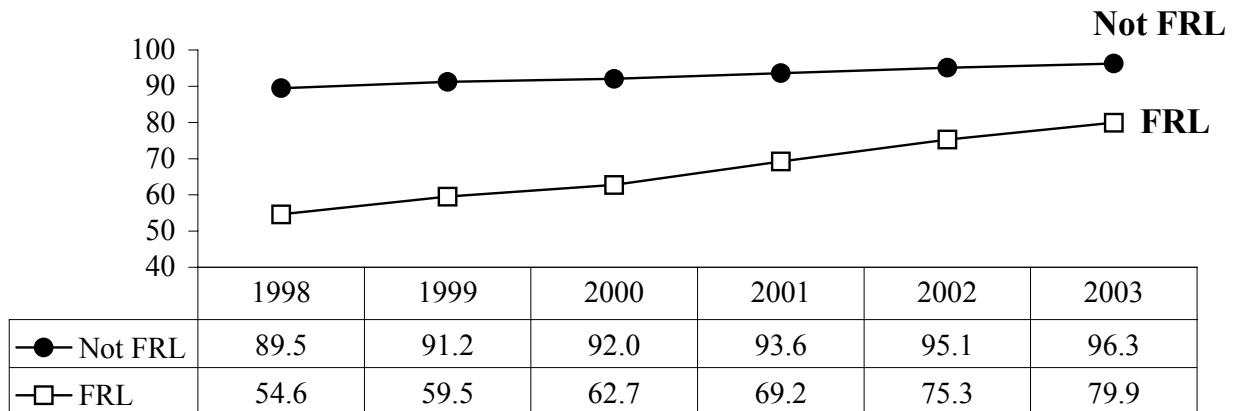
**EOG Results by FRL Status, 1998-2003**

Figures 15 and 16 show changes in performance for all grade 3-8 students disaggregated by FRL program participation. While FRL students, as a group, continue to perform at a lower level than other students, the achievement gap between the two groups has narrowed significantly over the past six years. In reading, the gap shrank 4.3 percentage points in 2003, and since 1998 has narrowed from a 35.2 percentage point difference to a 20.6 point difference. In math, the gap shrank by 3.4 percentage points in 2003, and since 1998 has declined from 34.9 percentage points to 16.4 points

**Figure 15**  
**Percent of All Grade 3-8 Students at/above Grade Level in Reading**  
**by FRL Status, 1998-2003**



**Figure 16**  
**Percent of All Grade 3-8 Students at/above Grade Level in Math**  
**by FRL Status, 1998-2003**

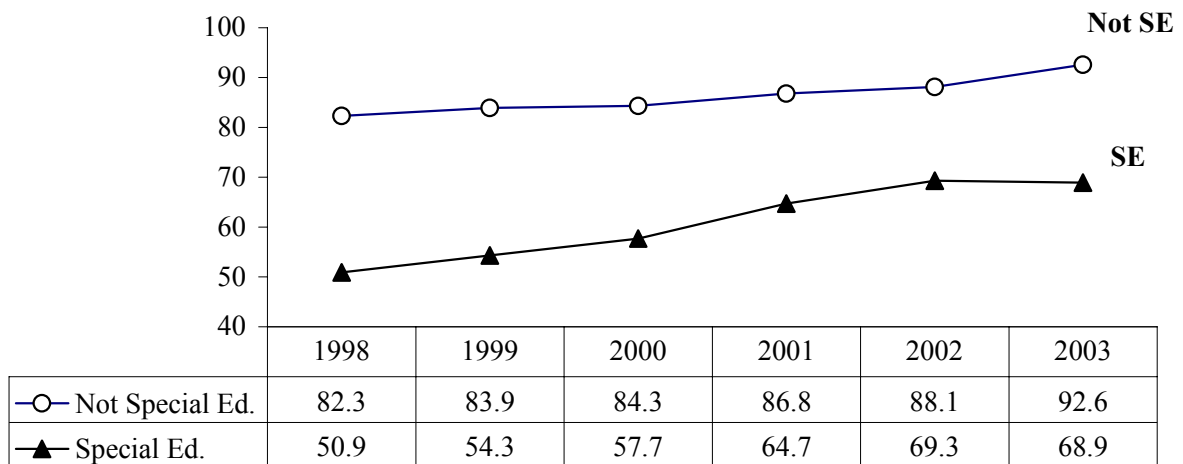


### EOG Results by Special Education Classification, 1998-2003

Figures 17 and 18 show 1998-2003 EOG results for all grade 3-8 students disaggregated by special education classification. The category labeled “Not SE” comprises the majority of students who are neither in academically gifted nor special education programs. Over the past six years, the percentage of these students meeting or exceeding grade-level standards has increased 10.3 percentage points in reading (from 82.3% in 1998 to 92.6% in 2003) and 11.9 percentage points in math (from 82.5% in 1998 to 94.4% in 2003).

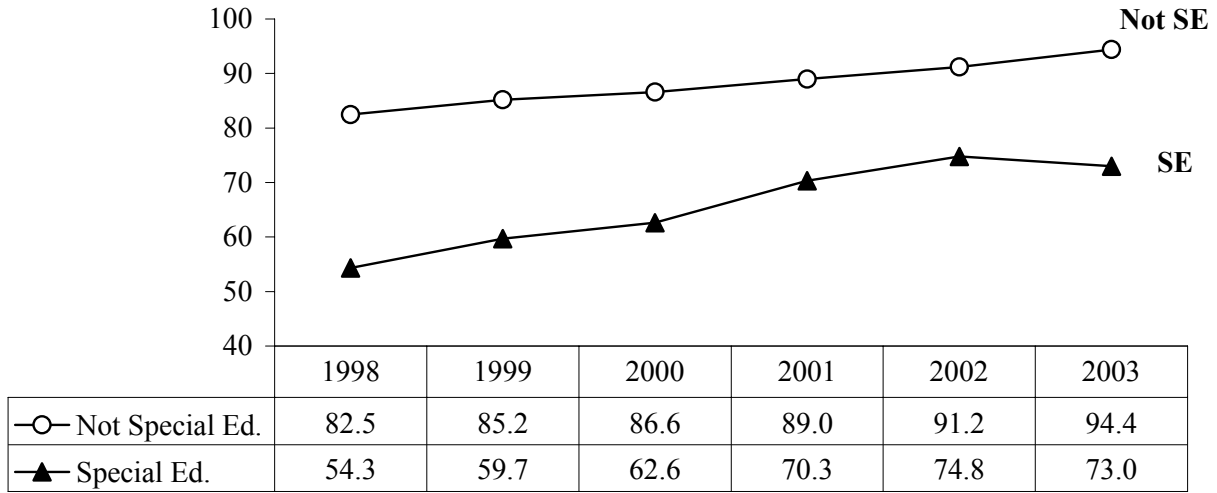
After rising the previous five years in row, the overall percentage of special education students scoring at or above grade level fell in 2003 in both reading and math. As stated earlier, the number of special education students taking pencil-and-paper EOG exams increased substantially in 2003 because computer adaptive tests were not offered. Consequently, the achievement gap between this group of students and those not in special education programs, which had been narrowing over the past five years, widened slightly in 2003. Since 1998, however, the percentage of special education students scoring at or above grade level in reading has risen 18 percentage points, from 50.9% to 68.9% in 2003. In math, it has increased 18.7 percentage points, from 54.3% in 1998 to 73.0% in 2003. The achievement gap in reading between special education students and the “not SE” group decreased from 31.4 percentage points in 1998 to 23.7 percentage points in 2003. In math, the gap declined from 28.2 percentage points in 1998 to 21.4 percentage points in 2003.

**Figure 17**  
**Percent of All Grade 3-8 Students at/above Grade Level in Reading**  
**by Special Education Classification, 1998-2003**





**Figure 18**  
**Percent of All Grade 3-8 Students at/above Grade Level in Math**  
**by Special Education Classification, 1998-2003**



**Figure 19: Percent of Students at/above Grade Level In Reading  
by Grade for Selected Subgroups, 2002-03**

Category	Grades 3-8		Gd. 3		Gd. 4		Gd. 5		Gd. 6		Gd. 7		Gd. 8	
	2002	2003	2002	2003	2002	2003	2002	2003	2002	2003	2002	2003	2002	2003
<b>All Students</b>	88.0	90.4	87.6	89.0	87.4	90.0	92.3	93.5	82.8	87.7	86.7	90.3	91.4	92.2
<b>Male</b>	86.6	88.9	86.5	87.2	86.0	88.5	91.7	92.2	81.1	85.8	85.1	89.0	89.9	90.8
<b>Female</b>	89.3	92.0	88.6	91.0	88.8	91.4	92.8	94.8	84.7	89.7	88.3	91.6	92.9	93.7
<b>White</b>	95.3	96.6	95.1	96.2	94.9	96.3	97.3	98.1	93.2	95.8	94.4	96.2	96.9	97.1
<b>Black</b>	71.7	78.3	71.2	75.4	70.7	78.3	80.3	84.6	61.3	72.1	69.4	78.3	79.0	82.0
<b>Asian</b>	96.1	96.4	96.9	96.0	97.2	95.6	98.0	98.0	93.5	95.9	94.4	97.4	96.3	95.4
<b>Hispanic/Latino</b>	74.1	78.2	75.2	78.1	73.6	73.4	83.3	82.8	65.0	76.0	70.3	78.7	76.9	80.8
<b>Am. Indian</b>	84.3	92.9	85.7	87.9	73.7	95.2	87.0	94.4	69.6	87.5	95.7	95.2	94.4	100.0
<b>Multiracial</b>	89.6	92.6	91.2	88.9	87.7	93.5	95.6	96.5	82.3	89.2	90.4	94.5	91.6	95.7
<b>Not FRL</b>	93.4	95.5	93.2	94.7	93.6	95.6	96.0	97.4	90.4	93.5	92.0	95.7	95.4	96.0
<b>FRL</b>	68.5	74.9	70.0	73.8	67.9	74.0	78.8	81.8	56.8	70.2	65.6	72.8	73.2	77.6
<b>Not Spec. Ed.</b>	88.1	92.6	89.6	92.3	85.9	90.7	92.2	95.1	81.5	89.9	86.3	93.1	92.9	94.7
<b>Special Ed.</b>	69.3	68.9	72.9	68.0	70.1	71.2	77.6	76.5	61.3	61.5	64.5	66.8	70.4	70.2
<b>LEP</b>		66.6		73.9		65.3		69.0		51.5		68.8		61.6
<b>Acad. Gifted</b>	99.9	100.0	100.0	100.0	99.8	100.0	99.9	100.0	99.7	100.0	99.9	100.0	99.9	100.0

\* Note: Percentages for LEP students are not available for 2002.

**Figure 20: Percent of Students at/above Grade Level In Math  
by Grade for Selected Subgroups, 2002-03**

Category	Grades 3-8		Gd. 3		Gd. 4		Gd. 5		Gd. 6		Gd. 7		Gd. 8	
	2002	2003	2002	2003	2002	2003	2002	2003	2002	2003	2002	2003	2002	2003
<b>All Students</b>	90.8	92.2	87.1	93.5	94.8	96.3	93.8	95.6	90.2	91.7	90.3	87.9	88.3	88.6
<b>Male</b>	90.4	91.5	87.4	93.3	94.3	95.6	93.7	95.1	89.5	90.5	89.5	87.2	88.2	87.7
<b>Female</b>	91.1	93.0	86.7	93.7	95.2	97.0	93.9	96.1	90.9	93.0	91.1	88.7	88.5	89.4
<b>White</b>	96.7	97.3	95.5	98.2	98.3	98.9	98.0	98.8	96.6	97.6	96.5	95.2	95.1	95.6
<b>Black</b>	76.8	81.3	68.5	83.3	85.7	90.8	83.6	89.3	76.0	79.8	76.0	73.1	71.5	72.4
<b>Asian</b>	97.8	97.8	95.6	99.2	98.4	97.7	99.7	99.4	98.6	99.1	97.0	96.6	97.4	94.7
<b>Hispanic/Latino</b>	83.3	87.2	79.3	91.0	92.6	94.5	87.4	89.6	81.6	85.3	80.4	77.3	75.9	81.6
<b>Am. Indian</b>	92.1	92.9	81.0	90.9	100.0	100.0	91.3	94.4	95.7	91.7	91.3	90.5	94.4	91.7
<b>Multiracial</b>	92.8	93.8	89.4	93.2	97.6	95.9	95.6	97.1	91.1	92.8	91.2	91.4	92.5	92.1
<b>Not FRL</b>	95.1	96.3	93.2	97.2	97.6	98.6	97.1	98.3	95.1	96.1	94.5	94.3	93.1	93.6
<b>FRL</b>	75.3	79.9	68.3	83.6	85.8	89.6	82.4	87.8	73.2	78.3	73.6	67.9	66.8	69.4
<b>Not Spec. Ed.</b>	91.2	94.4	88.8	95.8	94.2	97.5	93.7	96.8	90.8	94.3	91.1	91.1	89.7	90.8
<b>Special Ed.</b>	74.8	73.0	75.1	78.8	87.0	85.7	82.8	83.9	72.2	70.0	69.4	60.0	62.7	62.0
<b>LEP</b>		80.1		88.6		90.4		82.8		69.3		60.5		74.0
<b>Acad. Gifted</b>	100	100.0	99.9	100.0	100.0	100.0	100.0	100.0	100.0	100.0	100.0	100.0	99.9	99.9

\* Note: Percentages for LEP students are not available for 2002.

**Percent of Students In Levels III and IV on EOG Tests for Three Years**

		Reading			Mathematics		
		2001	2002	2003	2001	2002	2003
304	<b>3rd Gd:</b>	89.9	93.6	96.7	89.9	93.6	99.3
<b>Adams Elementary</b>	<b>4th Gd:</b>	93.1	86.5	96.9	96.0	95.8	99.2
	<b>5th Gd:</b>	93.2	95.7	94.7	94.5	95.7	94.7
308	<b>3rd Gd:</b>	91.5	94.2	89.5	93.9	95.7	93.3
<b>Apex Elementary</b>	<b>4th Gd:</b>	93.9	95.1	96.1	96.9	97.9	97.6
	<b>5th Gd:</b>	97.8	98.7	94.4	96.8	98.1	95.1
320	<b>3rd Gd:</b>	78.9	96.4	75.9	70.4	94.6	80.5
<b>Aversboro Elementary</b>	<b>4th Gd:</b>	66.7	83.3	90.4	87.7	90.0	97.3
	<b>5th Gd:</b>	74.4	77.8	88.4	78.2	90.1	89.9
326	<b>3rd Gd:</b>	89.0	88.6	89.5	89.0	87.5	94.2
<b>Bailevick Elementary</b>	<b>4th Gd:</b>	84.2	95.2	90.4	93.7	100.0	93.6
	<b>5th Gd:</b>	93.9	92.6	95.6	92.9	94.7	97.8
327	<b>3rd Gd:</b>			91.9			93.6
<b>Ballentine Elementary</b>	<b>4th Gd:</b>			92.2			97.4
	<b>5th Gd:</b>			85.4			95.8
328	<b>3rd Gd:</b>	94.1	97.9	98.1	90.4	99.3	99.4
<b>Baucom Elementary</b>	<b>4th Gd:</b>	92.6	94.9	95.7	95.9	100.0	97.8
	<b>5th Gd:</b>	98.6	97.7	97.0	99.3	98.4	98.5
334	<b>3rd Gd:</b>	93.8	100.0	94.4	98.4	98.8	98.4
<b>Brassfield Elementary</b>	<b>4th Gd:</b>	94.7	98.5	94.9	96.1	100.0	97.5
	<b>5th Gd:</b>	98.7	94.3	100.0	98.7	94.3	97.2
336	<b>3rd Gd:</b>	70.6	74.1	76.1	63.5	71.6	83.0
<b>Brentwood Elementary</b>	<b>4th Gd:</b>	70.7	79.0	70.6	77.3	81.5	92.9
	<b>5th Gd:</b>	79.5	87.5	86.6	96.4	93.1	92.7
340	<b>3rd Gd:</b>	91.3	91.3	85.0	85.9	90.0	89.9
<b>Briarcliff Elementary</b>	<b>4th Gd:</b>	91.2	84.5	89.9	94.5	94.0	97.5
	<b>5th Gd:</b>	96.3	91.7	92.9	95.1	94.1	96.5
344	<b>3rd Gd:</b>	77.3	76.8	77.9	69.7	68.1	83.1
<b>Brooks Elementary</b>	<b>4th Gd:</b>	76.8	81.4	93.6	88.4	89.8	91.9
	<b>5th Gd:</b>	91.2	92.9	92.3	91.2	92.9	93.9
352	<b>3rd Gd:</b>	89.9	75.4	83.0	82.6	74.6	84.9
<b>Bugg Elementary</b>	<b>4th Gd:</b>	89.7	84.3	87.3	98.5	90.0	100.0
	<b>5th Gd:</b>	89.0	89.5	92.1	85.4	85.5	100.0

**Percent of Students In Levels III and IV on EOG Tests for Three Years**

		Reading			Mathematics		
		2001	2002	2003	2001	2002	2003
362	<b>3rd Gd:</b>	80.9	66.7	80.2	75.9	62.5	97.9
<b>Carver Elementary</b>	<b>4th Gd:</b>	78.6	69.6	76.1	96.6	86.3	97.7
	<b>5th Gd:</b>	82.4	82.1	86.9	92.6	90.5	89.7
	<hr/>						
364	<b>3rd Gd:</b>	76.5	88.8	89.3	75.9	90.7	99.0
<b>Carv Elementary</b>	<b>4th Gd:</b>	73.3	79.7	92.1	82.6	97.4	98.9
	<b>5th Gd:</b>	84.5	87.3	95.4	90.6	91.8	97.2
	<hr/>						
376	<b>3rd Gd:</b>	89.2	94.1	95.8	89.2	92.9	99.0
<b>Combs Elementary</b>	<b>4th Gd:</b>	93.3	98.6	96.8	100.0	98.6	99.0
	<b>5th Gd:</b>	96.3	88.5	98.7	95.0	94.9	96.2
	<hr/>						
380	<b>3rd Gd:</b>	73.5	80.7	79.3	72.3	76.1	87.4
<b>Conn Elementary</b>	<b>4th Gd:</b>	64.6	76.7	74.4	84.8	87.7	91.5
	<b>5th Gd:</b>	85.9	77.3	80.5	90.2	86.7	90.9
	<hr/>						
384	<b>3rd Gd:</b>	84.2	82.2	80.5	75.0	78.9	92.9
<b>Creech Road Elementary</b>	<b>4th Gd:</b>	82.2	63.9	82.9	90.5	96.3	94.6
	<b>5th Gd:</b>	85.2	73.5	84.0	76.5	81.9	90.4
	<hr/>						
390	<b>3rd Gd:</b>	96.5	98.7	100.0	97.0	97.5	98.9
<b>Davis Drive Elementary</b>	<b>4th Gd:</b>	97.7	96.6	98.8	100.0	98.9	100.0
	<b>5th Gd:</b>	98.8	99.5	99.5	98.8	100.0	100.0
	<hr/>						
393	<b>3rd Gd:</b>	88.1	92.9	90.8	89.0	90.9	96.6
<b>Dillard Dr. Elementary</b>	<b>4th Gd:</b>	88.7	91.5	88.6	94.9	95.7	94.3
	<b>5th Gd:</b>	89.1	85.9	95.4	90.1	84.9	96.3
	<hr/>						
396	<b>3rd Gd:</b>	79.4	79.4	88.1	76.2	80.9	96.4
<b>Douglas Elementary</b>	<b>4th Gd:</b>	86.7	90.8	83.6	88.0	98.5	95.9
	<b>5th Gd:</b>	88.7	90.5	98.6	87.3	89.2	95.8
	<hr/>						
398	<b>3rd Gd:</b>	93.1	93.1	92.7	96.9	93.7	96.8
<b>Durant Road Elementary</b>	<b>4th Gd:</b>	92.2	95.1	95.6	95.2	97.8	99.5
	<b>5th Gd:</b>	97.6	93.6	99.0	98.8	95.4	98.4
	<hr/>						
414	<b>3rd Gd:</b>	84.4	88.2	88.2	85.6	90.2	94.1
<b>Farmington Woods Elementa</b>	<b>4th Gd:</b>	85.4	85.5	90.8	92.3	94.6	96.4
	<b>5th Gd:</b>	88.5	91.3	94.5	91.2	93.6	97.3
	<hr/>						
415	<b>3rd Gd:</b>	89.7	80.7	82.2	79.5	82.8	88.1
<b>Fox Road Elementary</b>	<b>4th Gd:</b>	86.2	93.0	85.0	94.3	98.4	92.5
	<b>5th Gd:</b>	91.9	90.7	90.2	91.1	89.3	94.8
	<hr/>						

**Percent of Students In Levels III and IV on EOG Tests for Three Years**

		Reading			Mathematics		
		2001	2002	2003	2001	2002	2003
416	<b>3rd Gd:</b>	82.4	87.3	87.2	76.5	79.0	85.9
<b>Fuller Elementary</b>	<b>4th Gd:</b>	88.4	86.7	85.7	87.0	91.7	95.2
	<b>5th Gd:</b>	85.1	94.1	95.7	73.8	92.8	95.7
420	<b>3rd Gd:</b>	78.7	83.7	88.5	83.7	87.7	89.8
<b>Fuquav-Varina Elementary</b>	<b>4th Gd:</b>	83.9	82.2	84.6	94.7	89.9	96.2
	<b>5th Gd:</b>	83.7	84.7	83.8	85.1	90.4	89.9
439	<b>3rd Gd:</b>	94.3	99.1	99.1	97.1	98.1	100.0
<b>Green Hope Elementary</b>	<b>4th Gd:</b>	99.0	97.9	99.1	99.0	100.0	100.0
	<b>5th Gd:</b>	98.3	99.1	100.0	100.0	100.0	100.0
440	<b>3rd Gd:</b>	90.0	95.3	90.8	94.2	92.9	95.0
<b>Green Elementary</b>	<b>4th Gd:</b>	91.6	92.9	95.9	96.2	97.3	96.8
	<b>5th Gd:</b>	90.1	96.8	96.4	95.4	96.8	100.0
442	<b>3rd Gd:</b>	90.9	87.9	93.1	90.9	87.1	94.1
<b>Hilburn Drive Elementary</b>	<b>4th Gd:</b>	84.6	89.9	91.3	90.6	92.1	97.6
	<b>5th Gd:</b>	92.0	97.4	95.3	94.3	99.1	97.7
446	<b>3rd Gd:</b>	77.2	82.4	82.0	72.0	84.6	92.1
<b>Hodge Road Elementary</b>	<b>4th Gd:</b>	75.7	82.0	81.2	85.2	98.4	90.3
	<b>5th Gd:</b>	85.6	92.2	90.4	84.0	87.4	91.3
447	<b>3rd Gd:</b>	82.8	85.7	82.6	83.0	90.8	87.9
<b>Holly Springs Elementary</b>	<b>4th Gd:</b>	85.4	83.2	87.2	93.5	97.0	93.3
	<b>5th Gd:</b>	90.2	91.6	89.3	92.2	95.1	93.6
448	<b>3rd Gd:</b>	82.9	77.6	90.7	85.6	78.6	91.7
<b>Hunter Elementary</b>	<b>4th Gd:</b>	81.6	90.1	92.3	90.3	95.5	98.1
	<b>5th Gd:</b>	93.3	89.4	97.5	90.8	94.3	97.5
452	<b>3rd Gd:</b>	83.7	85.7	87.3	80.6	92.9	86.1
<b>Jeffreys Grove Elementary</b>	<b>4th Gd:</b>	88.5	82.1	84.3	96.2	96.4	96.3
	<b>5th Gd:</b>	87.9	93.1	86.6	90.1	98.0	94.9
454	<b>3rd Gd:</b>	88.7	93.2	94.2	87.9	92.6	95.5
<b>Jones Dairy Elementary</b>	<b>4th Gd:</b>	92.3	89.7	94.6	94.9	98.7	97.6
	<b>5th Gd:</b>	91.0	93.2	94.9	95.9	98.1	98.7
456	<b>3rd Gd:</b>	82.6	79.6	74.2	78.2	70.4	90.9
<b>Jovner Elementary</b>	<b>4th Gd:</b>	82.4	79.0	86.5	85.1	82.7	92.1
	<b>5th Gd:</b>	86.4	82.2	84.0	87.5	82.2	86.7

**Percent of Students In Levels III and IV on EOG Tests for Three Years**

		Reading			Mathematics		
		2001	2002	2003	2001	2002	2003
460 <b>Kingswood Elementary</b>	<b>3rd Gd:</b>	93.2	93.8	97.4	95.5	93.8	100.0
	<b>4th Gd:</b>	92.6	87.5	91.2	100.0	97.9	100.0
	<b>5th Gd:</b>	98.1	100.0	100.0	100.0	100.0	100.0
464 <b>Knightdale Elementary</b>	<b>3rd Gd:</b>	79.1	65.7	91.2	70.4	67.7	98.3
	<b>4th Gd:</b>	73.0	69.8	88.4	86.5	88.9	98.1
	<b>5th Gd:</b>	87.4	80.0	88.8	88.2	83.2	94.8
468 <b>Lacy Elementary</b>	<b>3rd Gd:</b>	79.1	85.0	93.9	91.9	90.0	95.5
	<b>4th Gd:</b>	81.1	94.9	89.3	88.4	97.5	89.3
	<b>5th Gd:</b>	94.0	94.1	97.3	98.8	97.6	100.0
469 <b>Leesville Road Elementary</b>	<b>3rd Gd:</b>	94.7	93.1	93.8	91.5	97.4	96.4
	<b>4th Gd:</b>	92.5	96.3	97.7	97.0	97.2	99.2
	<b>5th Gd:</b>	99.0	96.4	97.5	96.9	96.5	96.6
470 <b>Lead Mine Elementary</b>	<b>3rd Gd:</b>	83.8	83.3	92.2	82.1	83.3	92.2
	<b>4th Gd:</b>	86.4	88.4	92.3	90.0	95.8	94.9
	<b>5th Gd:</b>	91.4	98.0	95.6	95.1	96.9	98.9
476 <b>Lincoln Heights Elementary</b>	<b>3rd Gd:</b>	80.3	93.0	84.9	82.7	92.0	85.9
	<b>4th Gd:</b>	92.9	82.3	88.5	93.0	88.7	93.8
	<b>5th Gd:</b>	85.1	95.5	90.9	88.8	89.6	100.0
480 <b>Lockhart Elementary</b>	<b>3rd Gd:</b>	87.6	92.7	93.7	81.7	93.8	97.4
	<b>4th Gd:</b>	89.6	93.1	96.2	97.0	98.0	99.1
	<b>5th Gd:</b>	95.3	96.9	97.9	89.7	95.0	99.0
488 <b>Lynn Road Elementary</b>	<b>3rd Gd:</b>	84.8	85.0	77.6	73.9	76.5	86.8
	<b>4th Gd:</b>	84.9	76.3	87.7	90.9	88.2	91.8
	<b>5th Gd:</b>	84.8	87.1	81.9	88.2	87.1	85.5
494 <b>Middle Creek Elementary</b>	<b>3rd Gd:</b>	79.5	89.7	91.6	72.6	89.9	94.0
	<b>4th Gd:</b>	78.1	85.5	98.0	89.0	88.2	98.0
	<b>5th Gd:</b>	82.8	89.9	92.3	89.1	97.1	98.7
496 <b>Millbrook Elementary</b>	<b>3rd Gd:</b>	81.8	66.7	75.0	71.3	67.0	89.4
	<b>4th Gd:</b>	74.7	78.9	81.4	81.3	86.8	94.3
	<b>5th Gd:</b>	91.4	91.8	88.0	88.9	85.2	96.0
504 <b>Morrisville Elementary</b>	<b>3rd Gd:</b>	96.8	96.5	97.6	96.1	97.1	100.0
	<b>4th Gd:</b>	96.1	95.1	98.2	98.7	98.8	99.4
	<b>5th Gd:</b>	99.4	93.5	98.1	100.0	97.4	99.4

**Percent of Students In Levels III and IV on EOG Tests for Three Years**

		Reading			Mathematics		
		2001	2002	2003	2001	2002	2003
516	<b>3rd Gd:</b>	91.5	94.3	91.1	91.5	87.9	94.6
<b>North Ridge Elementary</b>	<b>4th Gd:</b>	94.1	95.9	96.7	96.4	99.0	95.9
	<b>5th Gd:</b>	95.7	98.0	94.0	93.6	97.9	95.7
520	<b>3rd Gd:</b>	91.9	93.0	94.1	92.8	94.8	96.6
<b>Northwoods Elementary</b>	<b>4th Gd:</b>	92.9	89.5	99.2	92.9	96.0	100.0
	<b>5th Gd:</b>	93.6	98.9	97.1	93.6	97.9	95.7
522	<b>3rd Gd:</b>	95.1	95.1	96.4	96.3	97.5	94.6
<b>Oak Grove Elementary</b>	<b>4th Gd:</b>	94.6	96.4	97.0	98.2	98.8	98.2
	<b>5th Gd:</b>	96.9	98.2	97.7	97.6	98.8	98.3
523	<b>3rd Gd:</b>	90.7	92.2	96.5	93.5	94.0	99.3
<b>Olive Chapel Elementary</b>	<b>4th Gd:</b>	96.9	92.7	98.6	97.7	97.1	100.0
	<b>5th Gd:</b>	91.9	96.4	97.6	94.6	97.1	97.6
524	<b>3rd Gd:</b>	81.8	81.4	92.3	78.8	79.1	94.2
<b>Olds Elementary</b>	<b>4th Gd:</b>	84.0	92.5	88.6	96.0	92.9	97.7
	<b>5th Gd:</b>	82.9	95.7	86.7	95.1	97.9	88.9
525	<b>3rd Gd:</b>	90.0	78.9	81.8	90.0	84.9	89.1
<b>Partnership Elementary</b>	<b>4th Gd:</b>	83.3	88.9	87.0	94.4	100.0	97.8
	<b>5th Gd:</b>		82.9	91.1		94.3	97.8
530	<b>3rd Gd:</b>	89.1	84.1	88.1	83.7	90.7	95.1
<b>Pennv Road Elementary</b>	<b>4th Gd:</b>	77.8	84.2	93.0	91.9	90.4	100.0
	<b>5th Gd:</b>	97.7	96.7	96.5	96.6	95.6	94.9
531	<b>3rd Gd:</b>	91.3	90.1	99.1	95.2	88.1	98.1
<b>Pleasant Union Elementary</b>	<b>4th Gd:</b>	91.1	93.1	95.7	95.5	98.0	100.0
	<b>5th Gd:</b>	95.2	97.3	96.8	94.4	94.5	97.9
532	<b>3rd Gd:</b>	83.3	84.3	76.7	80.3	84.3	88.3
<b>Poe Elementary</b>	<b>4th Gd:</b>	78.7	88.2	95.9	80.9	96.1	95.9
	<b>5th Gd:</b>	92.1	95.4	95.9	94.7	97.7	95.9
536	<b>3rd Gd:</b>	71.1	81.2	85.1	62.9	78.6	88.8
<b>Powell Elementary</b>	<b>4th Gd:</b>	67.4	81.4	75.0	81.1	94.2	80.7
	<b>5th Gd:</b>	95.9	89.9	92.0	97.3	87.8	93.2
540	<b>3rd Gd:</b>	72.6	69.0	87.7	65.3	73.2	97.3
<b>Rand Road Elementary</b>	<b>4th Gd:</b>	74.0	82.7	75.7	83.7	97.4	94.3
	<b>5th Gd:</b>	82.8	93.7	92.2	83.9	94.7	93.5



**Percent of Students In Levels III and IV on EOG Tests for Three Years**

		Reading			Mathematics		
		2001	2002	2003	2001	2002	2003
542 Reedv Creek Elem.	3rd Gd:	85.5	73.2	85.3	80.3	75.9	95.1
	4th Gd:	86.9	83.9	81.6	90.9	87.5	91.3
	5th Gd:	96.3	89.4	92.7	93.5	91.5	95.2
544 Rolesville Elementarv	3rd Gd:	68.4	81.6	91.8	69.6	79.6	94.6
	4th Gd:	81.4	80.6	85.3	93.0	92.5	97.4
	5th Gd:	85.0	86.4	98.8	83.9	88.5	96.3
548 Root Elementary	3rd Gd:	84.6	91.4	84.4	81.8	91.4	87.0
	4th Gd:	86.4	98.4	91.4	95.0	98.4	96.6
	5th Gd:	88.2	87.3	89.2	89.7	93.6	87.7
550 Salem Elementary	3rd Gd:	93.1	92.0	91.9	93.1	95.4	94.6
	4th Gd:	91.7	91.4	97.8	92.9	96.2	100.0
	5th Gd:	88.2	94.9	99.0	93.4	93.7	97.1
560 Smith Elementary	3rd Gd:	74.8	82.2	78.2	76.0	72.0	92.3
	4th Gd:	83.1	72.8	78.7	94.0	90.6	97.8
	5th Gd:	86.4	84.4	83.0	78.7	83.0	92.1
564 Stough Elementary	3rd Gd:	91.8	92.1	86.7	87.8	94.7	89.3
	4th Gd:	93.4	95.2	87.8	93.4	92.9	97.6
	5th Gd:	89.5	93.4	93.3	90.7	97.4	96.7
568 Swift Creek Elementary	3rd Gd:	76.3	90.1	86.8	71.1	88.7	94.1
	4th Gd:	71.0	85.1	89.6	77.0	92.1	97.0
	5th Gd:	82.1	92.8	93.0	79.4	95.2	97.7
570 Timber Drive Elementary	3rd Gd:	91.9	90.5	95.9	95.5	91.8	96.5
	4th Gd:	90.7	93.2	91.6	97.8	99.3	100.0
	5th Gd:	92.5	94.1	93.8	96.3	98.7	95.3
572 Underwood Elementary	3rd Gd:	70.0	76.2	71.2	70.0	73.2	75.0
	4th Gd:	67.3	75.5	76.9	76.9	81.1	89.7
	5th Gd:	83.0	81.3	94.7	88.5	83.3	96.5
576 Vance Elementary	3rd Gd:	82.1	80.9	84.9	87.6	82.6	92.3
	4th Gd:	76.3	86.9	80.9	90.0	97.6	89.7
	5th Gd:	82.1	95.9	93.4	88.1	97.3	95.6
580 Vandora Springs Elem.	3rd Gd:	86.4	78.7	85.5	85.2	86.8	90.7
	4th Gd:	94.7	83.5	81.5	100.0	93.7	95.1
	5th Gd:	92.6	86.5	88.1	93.6	94.7	86.9

**Percent of Students In Levels III and IV on EOG Tests for Three Years**

		Reading			Mathematics		
		2001	2002	2003	2001	2002	2003
584	<b>3rd Gd:</b>	89.6	85.8	81.9	79.9	74.2	85.9
<b>Wake Forest Elementary</b>	<b>4th Gd:</b>	82.5	84.7	80.4	92.0	92.0	93.5
	<b>5th Gd:</b>	88.4	93.2	94.9	87.1	89.8	94.9
593	<b>3rd Gd:</b>	84.9	89.5	91.8	86.1	88.6	98.0
<b>Wakefield Elem.</b>	<b>4th Gd:</b>	88.1	88.8	92.2	94.1	94.4	99.2
	<b>5th Gd:</b>	90.6	99.1	97.7	92.9	94.7	96.9
596	<b>3rd Gd:</b>	86.5	86.5	90.1	86.5	84.4	93.4
<b>Washington Elementary</b>	<b>4th Gd:</b>	83.0	92.0	90.6	95.7	95.0	100.0
	<b>5th Gd:</b>	89.8	91.4	94.2	91.7	92.5	99.0
598	<b>3rd Gd:</b>	86.7	93.9	90.8	94.6	91.4	94.1
<b>Weatherstone Elem.</b>	<b>4th Gd:</b>	93.3	94.2	91.3	97.9	99.0	97.7
	<b>5th Gd:</b>	99.1	99.0	99.1	100.0	99.0	100.0
600	<b>3rd Gd:</b>	71.7	88.6	90.0	62.8	86.5	91.0
<b>Wendell Elementary</b>	<b>4th Gd:</b>	76.2	89.9	85.3	87.2	96.7	95.8
	<b>5th Gd:</b>	86.5	90.0	92.2	94.4	91.1	96.7
606	<b>3rd Gd:</b>	93.4	89.6	90.2	93.5	87.6	97.1
<b>West Lake Elementary</b>	<b>4th Gd:</b>	93.5	89.1	91.6	99.4	94.5	96.7
	<b>5th Gd:</b>	96.1	94.8	95.5	97.7	97.7	97.3
616	<b>3rd Gd:</b>	81.5	88.0	89.4	88.7	86.9	93.4
<b>Wilburn Elementary</b>	<b>4th Gd:</b>	84.3	82.1	92.9	92.2	92.6	96.8
	<b>5th Gd:</b>	90.1	93.4	96.9	93.7	93.6	96.3
618	<b>3rd Gd:</b>	78.7	89.6	90.2	72.1	82.4	92.6
<b>Wildwood Forest Elem.</b>	<b>4th Gd:</b>	82.8	82.9	87.4	85.0	91.1	96.4
	<b>5th Gd:</b>	88.8	93.5	91.7	88.8	89.7	95.8
620	<b>3rd Gd:</b>	79.3	97.2	88.3	71.2	94.4	88.3
<b>Wiley Elementary</b>	<b>4th Gd:</b>	75.9	86.0	94.4	89.5	98.0	93.0
	<b>5th Gd:</b>	90.0	81.8	86.5	88.3	87.3	90.4
624	<b>3rd Gd:</b>	82.1	93.8	88.3	92.9	93.8	93.3
<b>Willow Springs Elem.</b>	<b>4th Gd:</b>	83.7	87.8	87.4	95.4	96.4	95.2
	<b>5th Gd:</b>	90.4	88.0	96.6	95.7	93.2	95.5
626	<b>3rd Gd:</b>	81.3	88.2	82.8	81.6	80.9	94.8
<b>Yates Mill Pond Elementary</b>	<b>4th Gd:</b>	89.9	81.5	85.5	95.7	88.9	95.7
	<b>5th Gd:</b>	91.7	89.5	94.2	97.9	90.8	96.2

**Percent of Students In Levels III and IV on EOG Tests for Three Years**

		Reading			Mathematics		
		2001	2002	2003	2001	2002	2003
628	<b>3rd Gd:</b>	81.3	86.5	84.6	81.3	91.9	89.1
<b>York Elementary</b>	<b>4th Gd:</b>	85.4	81.3	87.5	89.9	90.6	88.5
	<b>5th Gd:</b>	85.1	93.4	85.2	89.7	96.7	90.2
<hr/>							
632	<b>3rd Gd:</b>	74.1	79.8	83.2	79.7	75.0	90.7
<b>Zebulon Elementary</b>	<b>4th Gd:</b>	83.9	80.0	77.1	92.4	88.2	89.0
	<b>5th Gd:</b>	78.2	89.4	85.5	86.3	95.3	88.9
<hr/>							

**Percent of Students In Levels III and IV on EOG Tests for Three Years**

		Reading			Mathematics		
		2001	2002	2003	2001	2002	2003
312	<b>6th Gd:</b>	88.4	86.4	93.1	92.7	94.1	94.0
<b>Anex Middle</b>	<b>7th Gd:</b>	92.9	89.2	92.8	93.9	91.7	92.0
	<b>8th Gd:</b>	92.7	93.9	94.3	92.7	93.0	93.4
	<hr/>						
356	<b>6th Gd:</b>	73.6	74.9	86.7	81.6	86.6	88.9
<b>Carnage Middle</b>	<b>7th Gd:</b>	75.5	77.1	88.9	76.0	81.7	86.7
	<b>8th Gd:</b>	85.4	88.1	88.5	83.7	84.2	81.7
	<hr/>						
360	<b>6th Gd:</b>	72.2	81.1	80.4	83.2	91.3	88.1
<b>Carroll Middle</b>	<b>7th Gd:</b>	85.0	81.6	81.9	81.7	88.3	80.3
	<b>8th Gd:</b>	90.8	88.7	90.3	88.4	83.9	84.7
	<hr/>						
370	<b>6th Gd:</b>	83.1	76.3	88.3	87.1	86.3	93.3
<b>Centennial Middle</b>	<b>7th Gd:</b>	75.9	86.5	83.5	78.6	87.5	84.6
	<b>8th Gd:</b>	88.9	86.5	88.7	80.8	79.7	81.4
	<hr/>						
388	<b>6th Gd:</b>	83.4	78.8	84.4	88.9	82.3	87.5
<b>Daniels Middle</b>	<b>7th Gd:</b>	84.5	88.3	88.3	83.2	88.0	83.1
	<b>8th Gd:</b>	91.2	91.8	90.3	84.8	88.1	87.3
	<hr/>						
391	<b>6th Gd:</b>	90.8	92.4	95.3	95.4	98.5	95.8
<b>Davis Drive Middle</b>	<b>7th Gd:</b>	92.4	95.1	95.8	95.1	97.4	95.3
	<b>8th Gd:</b>	95.0	96.8	97.3	93.5	94.1	97.3
	<hr/>						
394	<b>6th Gd:</b>	79.4	83.2	90.7	87.3	90.3	93.9
<b>Dillard Dr. Middle</b>	<b>7th Gd:</b>	86.3	92.8	94.4	88.0	94.9	92.6
	<b>8th Gd:</b>	95.2	94.6	94.3	92.6	91.3	92.3
	<hr/>						
399	<b>6th Gd:</b>	89.3	91.1	89.7	95.8	96.8	93.7
<b>Durant Road Middle</b>	<b>7th Gd:</b>	91.0	95.3	93.4	93.2	95.8	92.5
	<b>8th Gd:</b>	97.4	96.3	96.3	93.6	93.7	94.5
	<hr/>						
400	<b>6th Gd:</b>	79.3	79.3	80.9	88.0	90.4	87.0
<b>East Carv Middle</b>	<b>7th Gd:</b>	85.9	83.5	88.4	88.4	89.7	90.5
	<b>8th Gd:</b>	89.2	90.0	91.2	90.8	89.6	91.9
	<hr/>						

**Percent of Students In Levels III and IV on EOG Tests for Three Years**

		Reading			Mathematics		
		2001	2002	2003	2001	2002	2003
404	<b>6th Gd:</b>	69.2	63.6	75.7	79.0	78.9	87.8
<b>East Garner Middle</b>	<b>7th Gd:</b>	71.7	82.5	83.4	80.3	87.8	81.9
	<b>8th Gd:</b>	91.2	84.2	88.4	78.9	79.2	84.4
<hr/>							
408	<b>6th Gd:</b>	77.0	74.6	82.1	81.9	86.1	88.5
<b>East Millbrook Middle</b>	<b>7th Gd:</b>	77.1	80.7	87.5	83.4	84.9	84.8
	<b>8th Gd:</b>	86.2	93.2	93.5	74.9	86.0	83.9
<hr/>							
410	<b>6th Gd:</b>	68.3	74.1	76.9	77.3	80.7	87.1
<b>East Wake Middle</b>	<b>7th Gd:</b>	72.5	79.5	84.6	80.3	83.3	81.0
	<b>8th Gd:</b>	82.3	79.5	88.6	76.7	77.1	82.7
<hr/>							
424	<b>6th Gd:</b>	70.7	78.2	84.7	85.2	87.0	91.1
<b>Fuquay-Varina Middle</b>	<b>7th Gd:</b>	85.5	78.5	85.3	84.9	83.1	80.3
	<b>8th Gd:</b>	87.6	91.1	89.4	81.4	82.8	83.8
<hr/>							
471	<b>6th Gd:</b>	86.8	84.5	91.3	92.4	90.1	93.4
<b>Leesville Road Middle</b>	<b>7th Gd:</b>	93.1	90.7	93.7	90.7	93.0	91.1
	<b>8th Gd:</b>	93.4	93.9	94.8	92.8	93.6	89.7
<hr/>							
472	<b>6th Gd:</b>	87.7	88.8	96.2	92.6	92.9	97.1
<b>Ligon Middle</b>	<b>7th Gd:</b>	90.5	94.3	95.2	95.5	97.4	90.8
	<b>8th Gd:</b>	95.8	96.0	93.9	92.8	93.1	92.4
<hr/>							
484	<b>6th Gd:</b>	92.0	97.4	95.9	96.7	97.7	97.1
<b>Lufkin Rd. Middle</b>	<b>7th Gd:</b>	96.0	93.8	98.1	98.4	97.1	97.5
	<b>8th Gd:</b>		97.9	95.2		97.5	95.9
<hr/>							
492	<b>6th Gd:</b>	82.2	84.1	88.6	89.6	90.3	89.8
<b>Martin Middle</b>	<b>7th Gd:</b>	88.5	85.5	92.3	90.0	88.3	89.9
	<b>8th Gd:</b>	90.0	90.8	93.3	86.4	87.8	89.4
<hr/>							
506	<b>6th Gd:</b>			84.3			86.1
<b>Moore Square Museum Midd</b>	<b>7th Gd:</b>			92.8			82.9
	<b>8th Gd:</b>						

**Percent of Students In Levels III and IV on EOG Tests for Three Years**

		Reading			Mathematics		
		2001	2002	2003	2001	2002	2003
512	<b>6th Gd:</b>	63.0	73.4	73.7	72.8	87.5	86.1
North Garner Middle	<b>7th Gd:</b>	68.6	70.6	83.6	84.6	85.9	86.6
	<b>8th Gd:</b>	79.2	80.9	80.8	69.3	77.9	78.1
	<hr/>						
592	<b>6th Gd:</b>	71.2	80.6	86.2	83.2	88.3	90.1
Wake Forest-Rolesville Mid.	<b>7th Gd:</b>	79.9	81.0	85.6	81.6	89.0	81.0
	<b>8th Gd:</b>	91.6	86.2	87.9	85.5	79.7	83.9
	<hr/>						
594	<b>6th Gd:</b>	86.9	87.8	94.4	93.2	94.7	97.1
Wakefield Middle	<b>7th Gd:</b>	86.2	89.3	96.2	87.5	93.3	92.3
	<b>8th Gd:</b>		92.2	93.7		88.5	89.1
	<hr/>						
604	<b>6th Gd:</b>	83.9	91.4	95.8	90.7	95.6	95.6
West Carv Middle	<b>7th Gd:</b>	89.9	89.1	94.8	90.5	92.1	92.2
	<b>8th Gd:</b>	93.5	94.8	95.1	94.4	93.5	91.7
	<hr/>						
607	<b>6th Gd:</b>	92.2	91.3	93.7	94.9	97.0	96.4
West Lake Middle	<b>7th Gd:</b>	96.0	94.5	95.0	95.8	94.5	93.2
	<b>8th Gd:</b>	96.8	97.0	97.9	95.0	96.6	95.5
	<hr/>						
608	<b>6th Gd:</b>	88.7	84.4	86.4	92.7	88.3	87.8
West Millbrook Middle	<b>7th Gd:</b>	86.7	89.6	90.6	93.3	91.8	87.6
	<b>8th Gd:</b>	92.4	97.0	93.8	90.4	94.7	88.6
	<hr/>						
636	<b>6th Gd:</b>	68.9	76.3	83.3	84.0	83.2	90.5
Zebulon Middle	<b>7th Gd:</b>	75.2	84.6	84.2	79.3	89.3	80.7
	<b>8th Gd:</b>	83.5	85.8	89.7	84.3	85.1	84.6
	<hr/>						

## EOG Mean Scale Scores for Three Years

		Reading			Mathematics		
		2001	2002	2003	2001	2002	2003
304	<b>3rd Gd:</b>	152.9	153.5	253.5	152.9	257.2	258.7
<b>Adams Elementary</b>	<b>4th Gd:</b>	157.3	156.5	257.7	157.3	263.2	265.1
	<b>5th Gd:</b>	160.3	162.4	261.1	160.3	266.9	266.5
	<hr/>						
308	<b>3rd Gd:</b>	152.7	154.0	251.9	152.7	258.3	255.6
<b>Anex Elementary</b>	<b>4th Gd:</b>	157.0	156.6	259.5	157.0	264.1	266.2
	<b>5th Gd:</b>	161.6	162.1	262.1	161.6	269.2	268.7
	<hr/>						
320	<b>3rd Gd:</b>	148.2	151.4	247.1	148.2	255.4	251.9
<b>Aversboro Elementary</b>	<b>4th Gd:</b>	148.7	152.5	253.3	148.7	256.2	259.4
	<b>5th Gd:</b>	153.6	156.5	256.7	153.6	259.5	260.2
	<hr/>						
326	<b>3rd Gd:</b>	150.9	151.4	253.8	150.9	255.4	257.5
<b>Bailewick Elementary</b>	<b>4th Gd:</b>	154.7	157.0	256.6	154.7	261.9	261.5
	<b>5th Gd:</b>	160.6	159.9	262.3	160.6	265.2	267.9
	<hr/>						
327	<b>3rd Gd:</b>			251.1			255.5
<b>Ballentine Elementary</b>	<b>4th Gd:</b>			255.5			262.3
	<b>5th Gd:</b>			256.8			263.7
	<hr/>						
328	<b>3rd Gd:</b>	153.6	154.1	254.0	153.6	257.9	258.3
<b>Baucom Elementary</b>	<b>4th Gd:</b>	156.9	157.6	258.3	156.9	263.8	265.7
	<b>5th Gd:</b>	162.1	160.7	261.1	162.1	267.1	268.6
	<hr/>						
334	<b>3rd Gd:</b>	155.4	155.7	253.4	155.4	260.3	258.3
<b>Brassfield Elementary</b>	<b>4th Gd:</b>	158.6	159.2	257.3	158.6	266.0	264.6
	<b>5th Gd:</b>	163.0	162.3	263.1	163.0	271.0	270.6
	<hr/>						
336	<b>3rd Gd:</b>	144.5	144.6	244.7	144.5	248.8	249.4
<b>Brentwood Elementary</b>	<b>4th Gd:</b>	147.9	150.4	248.2	147.9	253.3	255.6
	<b>5th Gd:</b>	154.5	155.1	254.0	154.5	259.1	259.3
	<hr/>						
340	<b>3rd Gd:</b>	151.2	151.7	249.5	151.2	254.3	254.6
<b>Briarcliff Elementary</b>	<b>4th Gd:</b>	156.1	154.2	255.4	156.1	258.0	262.3
	<b>5th Gd:</b>	161.8	160.6	259.9	161.8	266.5	264.3
	<hr/>						
344	<b>3rd Gd:</b>	147.9	146.3	246.3	147.9	249.6	250.9
<b>Brooks Elementary</b>	<b>4th Gd:</b>	150.9	151.0	253.0	150.9	254.6	255.9
	<b>5th Gd:</b>	158.2	158.1	257.6	158.2	261.9	261.7
	<hr/>						
352	<b>3rd Gd:</b>	150.5	147.8	246.8	150.5	251.1	252.8
<b>Bugg Elementary</b>	<b>4th Gd:</b>	155.9	152.3	253.1	155.9	257.6	259.9
	<b>5th Gd:</b>	158.5	159.3	258.3	158.5	261.7	263.1
	<hr/>						
362	<b>3rd Gd:</b>	147.1	143.2	247.6	147.1	247.9	255.3
<b>Carver Elementary</b>	<b>4th Gd:</b>	151.8	149.0	249.7	151.8	254.5	259.5
	<b>5th Gd:</b>	155.2	156.3	255.8	155.2	263.7	261.5
	<hr/>						

### EOG Mean Scale Scores for Three Years

		Reading			Mathematics		
		2001	2002	2003	2001	2002	2003
364 Carv Elementary	<b>3rd Gd:</b>	148.3	152.2	250.2	148.3	255.7	256.6
	<b>4th Gd:</b>	151.2	152.1	254.5	151.2	259.4	263.3
	<b>5th Gd:</b>	156.8	158.9	258.7	156.8	263.5	264.6
376 Combs Elementary	<b>3rd Gd:</b>	152.9	152.7	252.8	152.9	255.9	257.9
	<b>4th Gd:</b>	155.7	156.9	256.5	155.7	262.4	262.8
	<b>5th Gd:</b>	160.9	159.4	261.0	160.9	268.2	267.4
380 Conn Elementary	<b>3rd Gd:</b>	147.2	146.9	247.2	147.2	250.5	252.2
	<b>4th Gd:</b>	149.4	151.3	251.5	149.4	257.7	257.0
	<b>5th Gd:</b>	158.1	156.5	257.0	158.1	262.2	263.4
384 Creech Road Elementary	<b>3rd Gd:</b>	146.2	147.0	247.3	146.2	250.7	253.5
	<b>4th Gd:</b>	149.6	148.5	251.0	149.6	257.8	256.4
	<b>5th Gd:</b>	154.5	153.5	254.0	154.5	257.4	259.0
390 Davis Drive Elementary	<b>3rd Gd:</b>	154.7	156.1	255.0	154.7	259.1	259.8
	<b>4th Gd:</b>	158.8	158.3	259.4	158.8	263.8	267.7
	<b>5th Gd:</b>	163.2	163.0	264.0	163.2	269.9	270.7
393 Dillard Dr. Elementary	<b>3rd Gd:</b>	151.2	151.5	251.2	151.2	255.5	257.3
	<b>4th Gd:</b>	155.0	155.1	253.4	155.0	259.8	258.8
	<b>5th Gd:</b>	158.9	157.3	259.2	158.9	261.7	265.4
396 Douglas Elementary	<b>3rd Gd:</b>	148.3	149.4	249.7	148.3	252.3	255.2
	<b>4th Gd:</b>	155.0	154.6	253.0	155.0	259.6	258.4
	<b>5th Gd:</b>	159.4	159.5	258.9	159.4	264.9	263.8
398 Durant Road Elementary	<b>3rd Gd:</b>	153.7	153.0	251.7	153.7	256.6	256.6
	<b>4th Gd:</b>	155.4	157.0	257.6	155.4	261.5	262.8
	<b>5th Gd:</b>	160.8	159.5	261.9	160.8	266.1	268.6
414 Farmington Woods Elementa	<b>3rd Gd:</b>	151.3	152.3	252.2	151.3	256.6	257.1
	<b>4th Gd:</b>	154.6	155.2	257.0	154.6	260.1	262.7
	<b>5th Gd:</b>	159.3	160.1	261.3	159.3	265.0	267.3
415 Fox Road Elementary	<b>3rd Gd:</b>	149.0	147.9	247.7	149.0	252.0	252.9
	<b>4th Gd:</b>	152.3	154.2	252.1	152.3	259.5	258.3
	<b>5th Gd:</b>	157.4	157.3	257.2	157.4	260.9	262.2
416 Fuller Elementary	<b>3rd Gd:</b>	150.3	150.7	248.4	150.3	253.1	253.2
	<b>4th Gd:</b>	154.7	155.3	254.0	154.7	258.0	259.6
	<b>5th Gd:</b>	158.8	159.6	260.9	158.8	263.6	266.1
420 Fuquav-Varina Elementary	<b>3rd Gd:</b>	147.7	149.2	249.0	147.7	253.0	253.8
	<b>4th Gd:</b>	152.8	152.2	253.9	152.8	257.0	260.9
	<b>5th Gd:</b>	156.1	157.7	256.0	156.1	261.3	261.8



## EOG Mean Scale Scores for Three Years

		Reading			Mathematics		
		2001	2002	2003	2001	2002	2003
439	<b>3rd Gd:</b>	154.3	155.2	253.6	154.3	258.2	257.9
<b>Green Hope Elementary</b>	<b>4th Gd:</b>	159.6	158.1	259.2	159.6	264.8	265.1
	<b>5th Gd:</b>	163.8	163.6	263.9	163.8	274.3	272.5
440	<b>3rd Gd:</b>	152.4	153.6	252.2	152.4	256.7	256.4
<b>Green Elementary</b>	<b>4th Gd:</b>	155.5	156.0	256.8	155.5	261.6	261.3
	<b>5th Gd:</b>	159.4	161.4	262.1	159.4	268.5	268.7
442	<b>3rd Gd:</b>	151.4	151.7	251.4	151.4	254.9	256.8
<b>Hilburn Drive Elementary</b>	<b>4th Gd:</b>	153.4	154.8	255.4	153.4	259.0	260.8
	<b>5th Gd:</b>	160.6	162.2	261.7	160.6	268.9	268.9
446	<b>3rd Gd:</b>	147.3	148.4	245.4	147.3	251.0	253.3
<b>Hodge Road Elementary</b>	<b>4th Gd:</b>	148.8	151.7	251.2	148.8	257.8	258.9
	<b>5th Gd:</b>	154.5	157.1	256.9	154.5	259.4	261.7
447	<b>3rd Gd:</b>	148.8	150.7	249.3	148.8	254.9	254.3
<b>Holly Springs Elementary</b>	<b>4th Gd:</b>	152.2	152.3	253.6	152.2	258.9	259.6
	<b>5th Gd:</b>	157.8	158.3	257.2	157.8	264.6	265.5
448	<b>3rd Gd:</b>	150.9	150.4	252.8	150.9	254.5	256.3
<b>Hunter Elementary</b>	<b>4th Gd:</b>	155.4	157.6	257.4	155.4	261.5	263.6
	<b>5th Gd:</b>	161.5	161.0	262.4	161.5	267.1	269.4
452	<b>3rd Gd:</b>	150.2	151.2	250.7	150.2	256.7	256.5
<b>Jeffreys Grove Elementary</b>	<b>4th Gd:</b>	155.7	154.5	253.7	155.7	263.1	262.4
	<b>5th Gd:</b>	158.7	160.0	258.2	158.7	268.4	266.1
454	<b>3rd Gd:</b>	150.7	151.1	252.1	150.7	254.6	256.4
<b>Jones Dairy Elementary</b>	<b>4th Gd:</b>	156.3	155.0	256.2	156.3	259.8	261.2
	<b>5th Gd:</b>	159.3	160.3	259.7	159.3	265.3	267.1
456	<b>3rd Gd:</b>	149.4	148.0	247.0	149.4	250.4	252.5
<b>Jovner Elementary</b>	<b>4th Gd:</b>	152.1	151.0	254.0	152.1	253.3	260.4
	<b>5th Gd:</b>	157.0	155.5	256.0	157.0	259.6	260.4
460	<b>3rd Gd:</b>	153.6	151.1	251.1	153.6	255.8	257.4
<b>Kingswood Elementary</b>	<b>4th Gd:</b>	157.2	157.0	255.8	157.2	262.9	264.3
	<b>5th Gd:</b>	162.1	163.7	261.8	162.1	272.4	272.8
464	<b>3rd Gd:</b>	146.1	144.9	248.5	146.1	249.0	254.9
<b>Knightdale Elementary</b>	<b>4th Gd:</b>	149.4	148.5	252.3	149.4	254.5	259.3
	<b>5th Gd:</b>	156.1	154.7	256.2	156.1	255.7	261.3
468	<b>3rd Gd:</b>	150.4	153.0	252.3	150.4	258.7	258.7
<b>Lacy Elementary</b>	<b>4th Gd:</b>	154.4	156.5	257.3	154.4	262.9	263.6
	<b>5th Gd:</b>	161.8	161.7	262.6	161.8	266.9	267.1

### EOG Mean Scale Scores for Three Years

		Reading			Mathematics		
		2001	2002	2003	2001	2002	2003
469	<b>3rd Gd:</b>	153.1	154.5	254.3	153.1	258.8	257.7
<b>Leesville Road Elementary</b>	<b>4th Gd:</b>	157.4	157.7	258.2	157.4	264.2	264.2
	<b>5th Gd:</b>	161.6	161.5	261.1	161.6	267.9	268.8
	<hr/>						
470	<b>3rd Gd:</b>	150.2	150.4	250.8	150.2	253.5	254.7
<b>Lead Mine Elementary</b>	<b>4th Gd:</b>	154.8	156.0	255.6	154.8	260.4	260.3
	<b>5th Gd:</b>	160.3	160.1	260.3	160.3	267.1	267.5
	<hr/>						
476	<b>3rd Gd:</b>	148.2	152.1	248.9	148.2	255.9	253.0
<b>Lincoln Heights Elementary</b>	<b>4th Gd:</b>	155.1	151.5	254.0	155.1	255.9	258.9
	<b>5th Gd:</b>	157.0	159.6	256.8	157.0	263.0	262.2
	<hr/>						
480	<b>3rd Gd:</b>	149.4	149.6	251.1	149.4	254.3	256.1
<b>Lockhart Elementary</b>	<b>4th Gd:</b>	154.3	154.1	255.4	154.3	259.3	261.8
	<b>5th Gd:</b>	158.1	159.4	260.1	158.1	262.6	265.5
	<hr/>						
488	<b>3rd Gd:</b>	148.8	149.9	247.8	148.8	253.0	253.6
<b>Lynn Road Elementary</b>	<b>4th Gd:</b>	153.2	152.0	253.7	153.2	256.6	259.5
	<b>5th Gd:</b>	156.3	158.3	255.8	156.3	262.5	260.9
	<hr/>						
494	<b>3rd Gd:</b>	149.3	150.9	251.2	149.3	255.1	255.2
<b>Middle Creek Elementary</b>	<b>4th Gd:</b>	150.9	153.6	257.4	150.9	258.6	263.4
	<b>5th Gd:</b>	155.4	157.8	259.0	155.4	263.5	266.4
	<hr/>						
496	<b>3rd Gd:</b>	147.1	144.2	246.0	147.1	248.6	252.1
<b>Millbrook Elementary</b>	<b>4th Gd:</b>	150.5	150.4	249.2	150.5	255.4	256.5
	<b>5th Gd:</b>	157.0	156.1	257.6	157.0	258.6	262.2
	<hr/>						
504	<b>3rd Gd:</b>	154.8	155.3	256.5	154.8	259.9	260.4
<b>Morrisville Elementary</b>	<b>4th Gd:</b>	158.3	158.0	258.7	158.3	265.2	264.7
	<b>5th Gd:</b>	163.1	161.4	263.5	163.1	268.8	269.8
	<hr/>						
516	<b>3rd Gd:</b>	151.9	151.6	250.2	151.9	253.7	254.8
<b>North Ridge Elementary</b>	<b>4th Gd:</b>	156.1	155.6	255.0	156.1	260.2	260.0
	<b>5th Gd:</b>	159.2	160.0	259.5	159.2	266.0	265.7
	<hr/>						
520	<b>3rd Gd:</b>	152.0	153.0	252.0	152.0	256.1	255.3
<b>Northwoods Elementary</b>	<b>4th Gd:</b>	155.2	154.2	257.4	155.2	259.3	263.3
	<b>5th Gd:</b>	160.7	161.7	260.5	160.7	266.7	266.5
	<hr/>						
522	<b>3rd Gd:</b>	154.4	154.8	254.6	154.4	258.1	257.8
<b>Oak Grove Elementary</b>	<b>4th Gd:</b>	157.6	158.6	259.6	157.6	263.6	264.4
	<b>5th Gd:</b>	163.2	163.3	263.4	163.2	271.6	270.2
	<hr/>						
523	<b>3rd Gd:</b>	152.7	152.0	252.7	152.7	257.4	258.7
<b>Olive Chanel Elementary</b>	<b>4th Gd:</b>	157.2	157.1	257.4	157.2	262.0	264.5
	<b>5th Gd:</b>	160.4	161.4	262.2	160.4	267.5	267.1
	<hr/>						

## EOG Mean Scale Scores for Three Years

		Reading			Mathematics		
		2001	2002	2003	2001	2002	2003
524 <b>Olds Elementary</b>	<b>3rd Gd:</b>	147.8	149.1	252.5	147.8	252.9	255.9
	<b>4th Gd:</b>	153.7	155.3	255.4	153.7	262.3	263.1
	<b>5th Gd:</b>	157.7	159.6	259.1	157.7	265.9	265.2
525 <b>Partnership Elementary</b>	<b>3rd Gd:</b>	152.6	149.8	249.8	152.6	254.3	254.8
	<b>4th Gd:</b>	154.6	155.9	255.9	154.6	263.5	261.2
	<b>5th Gd:</b>		159.1	259.3		264.9	266.4
530 <b>Pennv Road Elementary</b>	<b>3rd Gd:</b>	150.7	151.1	252.1	150.7	256.3	256.2
	<b>4th Gd:</b>	151.3	152.8	255.8	151.3	258.6	262.6
	<b>5th Gd:</b>	162.2	160.9	261.8	162.2	266.5	266.9
531 <b>Pleasant Union Elementary</b>	<b>3rd Gd:</b>	152.5	151.6	252.4	152.5	254.9	256.8
	<b>4th Gd:</b>	156.2	155.5	257.0	156.2	261.2	262.4
	<b>5th Gd:</b>	160.2	159.9	260.4	160.2	265.1	267.2
532 <b>Poe Elementary</b>	<b>3rd Gd:</b>	150.7	150.9	249.1	150.7	254.7	254.7
	<b>4th Gd:</b>	153.1	154.9	256.7	153.1	260.8	262.4
	<b>5th Gd:</b>	157.5	160.1	261.1	157.5	263.8	267.0
536 <b>Powell Elementary</b>	<b>3rd Gd:</b>	146.8	148.7	249.8	146.8	253.2	254.6
	<b>4th Gd:</b>	150.1	152.9	250.6	150.1	258.2	256.3
	<b>5th Gd:</b>	159.0	157.6	259.1	159.0	262.0	265.2
540 <b>Rand Road Elementary</b>	<b>3rd Gd:</b>	145.5	146.1	249.1	145.5	251.8	254.5
	<b>4th Gd:</b>	150.2	150.8	250.7	150.2	258.1	259.1
	<b>5th Gd:</b>	155.0	157.3	257.4	155.0	262.5	264.6
542 <b>Reedv Creek Elem.</b>	<b>3rd Gd:</b>	149.6	147.3	248.8	149.6	251.9	255.7
	<b>4th Gd:</b>	152.9	152.7	252.7	152.9	257.2	258.7
	<b>5th Gd:</b>	159.3	157.5	259.2	159.3	262.3	263.5
544 <b>Rolesville Elementary</b>	<b>3rd Gd:</b>	146.4	148.2	250.3	146.4	250.8	255.6
	<b>4th Gd:</b>	150.2	151.9	252.3	150.2	257.9	259.3
	<b>5th Gd:</b>	156.8	156.0	258.1	156.8	259.2	262.2
548 <b>Root Elementary</b>	<b>3rd Gd:</b>	150.8	154.0	250.7	150.8	257.9	255.6
	<b>4th Gd:</b>	155.4	155.6	258.1	155.4	262.8	265.4
	<b>5th Gd:</b>	161.2	158.6	258.1	161.2	266.0	264.6
550 <b>Salem Elementary</b>	<b>3rd Gd:</b>	154.1	152.2	252.1	154.1	257.6	257.5
	<b>4th Gd:</b>	156.6	157.2	258.0	156.6	263.5	266.1
	<b>5th Gd:</b>	158.6	160.4	261.5	158.6	264.1	266.8
560 <b>Smith Elementary</b>	<b>3rd Gd:</b>	145.8	146.1	245.5	145.8	248.9	252.7
	<b>4th Gd:</b>	151.4	149.4	249.8	151.4	256.6	257.7
	<b>5th Gd:</b>	155.2	155.5	253.9	155.2	259.0	259.4

### EOG Mean Scale Scores for Three Years

		Reading			Mathematics		
		2001	2002	2003	2001	2002	2003
564 Stough Elementary	3rd Gd:	152.7	151.4	249.4	152.7	256.2	253.8
	4th Gd:	155.5	156.3	254.1	155.5	260.9	260.2
	5th Gd:	158.6	159.6	260.4	158.6	263.7	266.0
568 Swift Creek Elementary	3rd Gd:	149.0	150.9	249.2	149.0	254.1	255.2
	4th Gd:	150.6	154.5	255.7	150.6	259.2	262.3
	5th Gd:	158.1	158.2	259.6	158.1	262.9	266.1
570 Timber Drive Elementary	3rd Gd:	153.1	152.8	252.6	153.1	257.0	257.2
	4th Gd:	155.8	156.5	255.7	155.8	262.2	263.3
	5th Gd:	159.2	160.1	259.8	159.2	267.0	265.7
572 Underwood Elementary	3rd Gd:	146.4	147.6	247.4	146.4	252.0	252.1
	4th Gd:	149.6	151.8	252.9	149.6	257.3	259.1
	5th Gd:	158.2	156.7	259.0	158.2	263.9	266.3
576 Vance Elementary	3rd Gd:	148.0	149.0	248.2	148.0	253.6	254.3
	4th Gd:	151.4	152.8	251.6	151.4	259.3	259.3
	5th Gd:	156.3	157.6	258.2	156.3	263.4	264.4
580 Vandora Springs Elem.	3rd Gd:	149.6	147.8	249.5	149.6	252.3	254.1
	4th Gd:	154.7	152.9	252.3	154.7	259.8	259.5
	5th Gd:	157.7	157.5	257.5	157.7	261.8	261.5
584 Wake Forest Elementary	3rd Gd:	150.3	149.5	248.7	150.3	252.1	253.0
	4th Gd:	152.4	152.9	253.3	152.4	256.9	258.5
	5th Gd:	157.6	158.0	259.0	157.6	261.2	263.0
593 Wakefield Elem.	3rd Gd:	149.5	150.3	250.8	149.5	253.5	256.2
	4th Gd:	154.7	153.8	254.4	154.7	258.5	261.7
	5th Gd:	158.8	159.7	260.3	158.8	264.0	265.7
596 Washington Elementary	3rd Gd:	151.0	152.3	253.2	151.0	256.6	257.8
	4th Gd:	155.4	157.0	256.9	155.4	262.6	264.3
	5th Gd:	159.4	161.0	261.5	159.4	265.9	268.9
598 Weatherstone Elem.	3rd Gd:	150.3	153.2	251.5	150.3	256.4	256.2
	4th Gd:	155.6	156.6	256.1	155.6	261.8	263.2
	5th Gd:	162.4	162.1	262.3	162.4	271.3	269.3
600 Wendell Elementary	3rd Gd:	145.3	149.0	248.1	145.3	252.9	252.2
	4th Gd:	151.3	153.2	253.0	151.3	259.3	260.2
	5th Gd:	156.4	157.0	258.2	156.4	264.6	266.2
606 West Lake Elementary	3rd Gd:	153.3	152.2	252.1	153.3	255.2	256.8
	4th Gd:	156.3	155.5	256.1	156.3	260.9	261.5
	5th Gd:	161.2	160.2	261.1	161.2	267.0	268.3

### EOG Mean Scale Scores for Three Years

		Reading			Mathematics		
		2001	2002	2003	2001	2002	2003
616	<b>3rd Gd:</b>	149.4	148.4	248.9	149.4	252.6	254.5
<b>Wilburn Elementary</b>	<b>4th Gd:</b>	151.5	151.7	252.9	151.5	257.2	259.0
	<b>5th Gd:</b>	157.8	158.2	258.6	157.8	261.5	264.1
618	<b>3rd Gd:</b>	147.2	149.7	249.2	147.2	253.6	254.4
<b>Wildwood Forest Elem.</b>	<b>4th Gd:</b>	152.9	151.4	252.9	152.9	255.7	259.6
	<b>5th Gd:</b>	158.0	159.2	258.5	158.0	261.5	262.4
620	<b>3rd Gd:</b>	149.1	154.6	251.3	149.1	255.1	254.2
<b>Wilev Elementary</b>	<b>4th Gd:</b>	153.4	157.6	257.9	153.4	264.9	262.6
	<b>5th Gd:</b>	160.0	158.4	260.8	160.0	264.8	268.8
624	<b>3rd Gd:</b>	150.0	151.5	248.6	150.0	254.7	254.7
<b>Willow Springs Elem.</b>	<b>4th Gd:</b>	152.6	153.7	252.6	152.6	259.3	260.9
	<b>5th Gd:</b>	157.8	157.8	257.9	157.8	264.9	265.6
626	<b>3rd Gd:</b>	147.8	150.3	247.5	147.8	253.2	254.4
<b>Yates Mill Pond Elementary</b>	<b>4th Gd:</b>	154.4	151.6	254.0	154.4	256.7	261.1
	<b>5th Gd:</b>	157.5	158.7	257.5	157.5	265.4	262.2
628	<b>3rd Gd:</b>	148.9	150.9	249.6	148.9	255.9	255.3
<b>York Elementary</b>	<b>4th Gd:</b>	152.9	153.1	254.6	152.9	259.2	260.8
	<b>5th Gd:</b>	158.3	158.1	257.9	158.3	265.3	265.4
632	<b>3rd Gd:</b>	145.6	147.2	247.8	145.6	250.4	253.3
<b>Zebulon Elementary</b>	<b>4th Gd:</b>	151.2	151.0	250.0	151.2	255.8	258.0
	<b>5th Gd:</b>	154.2	156.1	255.1	154.2	261.6	260.4

## EOG Mean Scale Scores for Three Years

		Reading			Mathematics		
		2001	2002	2003	2001	2002	2003
312	<b>6th Gd:</b>	161.7	161.7	262.5	161.7	269.5	270.9
<b>Anex Middle</b>	<b>7th Gd:</b>	165.9	164.4	265.6	165.9	273.0	273.3
	<b>8th Gd:</b>	166.9	167.1	268.5	166.9	277.4	277.8
356	<b>6th Gd:</b>	158.0	159.1	260.6	158.0	267.7	267.3
<b>Carnage Middle</b>	<b>7th Gd:</b>	160.8	161.2	263.1	160.8	268.4	271.4
	<b>8th Gd:</b>	165.0	164.4	265.0	165.0	273.8	272.2
360	<b>6th Gd:</b>	157.7	159.3	259.3	157.7	265.3	265.8
<b>Carroll Middle</b>	<b>7th Gd:</b>	161.2	161.8	260.7	161.2	269.7	268.1
	<b>8th Gd:</b>	164.9	164.4	264.7	164.9	271.5	271.4
370	<b>6th Gd:</b>	160.8	158.7	261.6	160.8	265.0	269.3
<b>Centennial Middle</b>	<b>7th Gd:</b>	160.2	163.2	262.2	160.2	270.2	270.6
	<b>8th Gd:</b>	163.0	163.6	265.7	163.0	269.9	272.0
388	<b>6th Gd:</b>	161.0	159.8	260.3	161.0	266.5	266.7
<b>Daniels Middle</b>	<b>7th Gd:</b>	162.0	164.2	263.4	162.0	272.1	270.0
	<b>8th Gd:</b>	166.4	166.2	266.5	166.4	273.1	273.9
391	<b>6th Gd:</b>	163.1	164.4	265.0	163.1	272.0	273.5
<b>Davis Drive Middle</b>	<b>7th Gd:</b>	164.6	165.0	266.6	164.6	276.3	275.7
	<b>8th Gd:</b>	167.3	168.0	269.1	167.3	277.6	279.7
394	<b>6th Gd:</b>	160.0	160.2	261.6	160.0	267.6	268.6
<b>Dillard Dr. Middle</b>	<b>7th Gd:</b>	162.6	164.8	265.6	162.6	276.1	273.8
	<b>8th Gd:</b>	168.2	167.4	268.0	168.2	277.5	277.1
399	<b>6th Gd:</b>	162.0	162.1	261.7	162.0	269.6	269.2
<b>Durant Road Middle</b>	<b>7th Gd:</b>	164.0	165.3	264.9	164.0	274.9	273.5
	<b>8th Gd:</b>	167.5	167.1	267.8	167.5	275.7	277.3
400	<b>6th Gd:</b>	159.3	159.0	258.9	159.3	264.7	265.1
<b>East Carv Middle</b>	<b>7th Gd:</b>	163.0	161.8	262.3	163.0	271.8	271.3
	<b>8th Gd:</b>	165.4	165.7	266.2	165.4	276.5	276.5
404	<b>6th Gd:</b>	155.4	154.6	256.2	155.4	261.0	263.8
<b>East Garner Middle</b>	<b>7th Gd:</b>	158.9	160.6	259.5	158.9	266.7	265.6
	<b>8th Gd:</b>	164.6	162.7	264.2	164.6	268.9	270.9
408	<b>6th Gd:</b>	157.4	157.1	259.1	157.4	263.3	264.1
<b>East Millbrook Middle</b>	<b>7th Gd:</b>	160.4	160.8	260.9	160.4	267.3	266.3
	<b>8th Gd:</b>	163.3	165.1	264.7	163.3	271.1	270.2

### EOG Mean Scale Scores for Three Years

		Reading			Mathematics		
		2001	2002	2003	2001	2002	2003
410 East Wake Middle	<b>6th Gd:</b>	155.6	156.8	256.9	155.6	260.8	264.3
	<b>7th Gd:</b>	159.2	159.6	259.8	159.2	266.0	265.5
	<b>8th Gd:</b>	161.1	161.9	263.3	161.1	268.9	270.1
424 Fuquav-Varina Middle	<b>6th Gd:</b>	156.7	158.5	259.7	156.7	264.8	266.7
	<b>7th Gd:</b>	162.3	160.7	261.5	162.3	267.6	266.9
	<b>8th Gd:</b>	163.7	165.0	264.6	163.7	271.7	271.6
471 Leesville Road Middle	<b>6th Gd:</b>	160.6	161.4	262.8	160.6	268.3	269.3
	<b>7th Gd:</b>	164.5	162.9	264.7	164.5	272.8	273.5
	<b>8th Gd:</b>	167.6	167.8	268.0	167.6	278.2	275.4
472 Ligon Middle	<b>6th Gd:</b>	164.2	164.2	266.3	164.2	273.6	275.0
	<b>7th Gd:</b>	166.5	167.1	268.7	166.5	279.4	278.2
	<b>8th Gd:</b>	169.3	169.8	269.9	169.3	283.1	281.0
484 Lufkin Rd. Middle	<b>6th Gd:</b>	163.6	164.7	265.0	163.6	271.6	271.3
	<b>7th Gd:</b>	165.8	165.8	267.8	165.8	276.3	277.5
	<b>8th Gd:</b>		168.7	269.5		280.8	280.1
492 Martin Middle	<b>6th Gd:</b>	161.5	161.8	262.2	161.5	269.5	269.3
	<b>7th Gd:</b>	164.1	164.0	265.9	164.1	274.3	276.4
	<b>8th Gd:</b>	167.0	167.1	268.2	167.0	276.9	277.5
506 Moore Square Museum Midd	<b>6th Gd:</b>			259.1			264.1
	<b>7th Gd:</b>			261.5			266.1
	<b>8th Gd:</b>						
512 North Garner Middle	<b>6th Gd:</b>	154.3	156.4	256.7	154.3	263.8	264.9
	<b>7th Gd:</b>	157.9	158.7	260.0	157.9	268.5	269.8
	<b>8th Gd:</b>	161.3	160.8	260.8	161.3	268.2	269.1
592 Wake Forest-Rolesville Mid.	<b>6th Gd:</b>	156.5	158.5	259.1	156.5	263.8	265.1
	<b>7th Gd:</b>	160.6	161.0	261.2	160.6	267.9	266.3
	<b>8th Gd:</b>	164.9	163.1	263.9	164.9	270.1	270.1
594 Wakefield Middle	<b>6th Gd:</b>	161.7	161.5	262.8	161.7	268.3	270.2
	<b>7th Gd:</b>	163.3	164.4	266.6	163.3	273.3	274.1
	<b>8th Gd:</b>		166.4	268.3		274.6	275.9
604 West Carv Middle	<b>6th Gd:</b>	160.8	162.8	264.2	160.8	270.5	271.4
	<b>7th Gd:</b>	164.0	163.5	265.6	164.0	272.8	273.5
	<b>8th Gd:</b>	166.9	166.7	268.0	166.9	275.7	275.7

### EOG Mean Scale Scores for Three Years

		Reading			Mathematics		
		2001	2002	2003	2001	2002	2003
607	<b>6th Gd:</b>	162.9	162.9	263.4	162.9	269.7	270.7
<b>West Lake Middle</b>	<b>7th Gd:</b>	165.1	164.9	265.7	165.1	274.1	273.0
	<b>8th Gd:</b>	168.2	168.0	269.1	168.2	277.6	278.0
	<hr/>						
608	<b>6th Gd:</b>	161.5	160.4	260.7	161.5	265.7	265.5
<b>West Millbrook Middle</b>	<b>7th Gd:</b>	163.7	163.7	263.5	163.7	272.9	270.4
	<b>8th Gd:</b>	167.1	167.4	267.0	167.1	275.1	274.4
	<hr/>						
636	<b>6th Gd:</b>	155.9	156.9	258.0	155.9	262.7	265.5
<b>Zebulon Middle</b>	<b>7th Gd:</b>	160.0	161.0	259.6	160.0	268.4	266.0
	<b>8th Gd:</b>	163.1	163.2	264.5	163.1	270.9	270.9
	<hr/>						