



2000-2001 End-of-Grade Multiple-Choice Test Results

October 16, 2001

Authors: Chuck Dulaney and Glenda Burch

Background

Wake County Public School System (WCPSS) students took the North Carolina End-of-Grade (EOG) multiple-choice tests during the months of May and June. Traditional calendar schools tested the week of May 22-26 and year-round schools tested the week of June 19-23.

The EOG tests have several components including: computer skills, open-ended tests, multiple-choice tests, and the writing assessment. All EOG tests are designed to measure student achievement of the knowledge and skills of the North Carolina Standard Course of Study for students in grades three through eight. The multiple-choice tests are required in reading and math and are optional in social studies and science. During the May/June 2001 administration, WCPSS students took the reading and math multiple-choice tests.

The EOG tests are a vital part of the North Carolina Annual Testing Program. They are the basis for the accountability program referred to as “ABCs”—Accountability, Basics, and Control. The goal of the ABCs is to hold individual schools accountable for student achievement in the basic subjects of reading and math. Under this program, test scores will be the basis for rewards or corrective action for individual schools.

Districtwide Results

WCPSS EOG multiple-choice results for 2000-2001 showed increases at all grade levels in both proficiency and average scale score in reading. In math, results show increases in proficiency at all grade levels. Math scale score ranges were recalculated by NCDPI for 2001 and comparisons to previous years are not valid.

- More than 90% of students scored at or above grade level in reading in grades 5 and 8 and in math in grades 4 and 5.
- More than 85% of students scored at or above grade level in reading in grades 3, 4, 5, 7, and 8 and in math in grades 4-8.
- No grade level showed a decrease.

Achievement Over Time

The percentage of students meeting or exceeding grade level standards in reading and math in all grade levels are the highest WCPSS students have ever achieved (see figures 1-4). Average reading scale scores also reached new highs in all grade levels (see figures 5 and 6).

Disaggregated Results

Gains in reading were shown by almost all race and gender groups at all grade levels. At grade 7, slight decreases were seen for female, Asian, Hispanic, and multiracial groups. The largest gains were made by previously lower-performing groups. (See figures 7-12 on pages 5 and 6).

For example, the percentage of Black students in grade 4 meeting or exceeding grade level standards in reading rose from 57.4% in 2000 to 65.3% in 2001. The percentage of Black students in grade 5 meeting or exceeding grade level

standards rose from 68.9% in 2000 to 76.8% in 2001. The percentage of Hispanic students at or above grade level in reading rose from 65.4% in 2000 to 74.5% in grade 3, and from 66.7% to 79.9% in grade 8. Students receiving free or reduced lunch showed improvements in reading at all grade levels, ranging from a 1.5 percentage point increase at grade 7 to an 8.9 percentage point increase at grade 5.

Math gains were greater than reading gains in 2001. Eighth-grade Hispanic students showed an 11.6 point gain in the percentage of students at or above grade level from 2000 to 2001. Black students showed gains ranging from 2.3 percentage points at grade 8 to 8.2 percentage points at grade 3. Grade 7 showed a very small drop in percent at grade level for students not receiving free lunch (-.3), Asian students (-.9), Hispanic students (-1.2) and multiracial students (-6.0).

Achievement Level Scores

The achievement level score attempts to categorize student achievement according to four broad levels, defined by the North Carolina Department of Public Instruction (NCDPI) as follows:

Achievement Levels

Level I: Students performing at this level do not have sufficient mastery of knowledge and skills in this subject area to be successful at the next grade level.

Level III: Students performing at this level consistently demonstrate mastery of grade level subject matter and skills and are well prepared for the next grade level.

Level II: Students performing at this level demonstrate inconsistent mastery of knowledge and skills in this subject area, and are minimally prepared to be successful at the next grade level.

Level IV: Students performing at this level consistently perform in a superior manner clearly beyond that required to be proficient at grade level work.

One important way of examining test scores is to follow the progress of a cohort of students over time. The shaded and unshaded boxes in the tables below show the scores of cohorts of students. For example, one cohort of students was in 3rd grade in 1996 and completed 8th grade in 2001. Over time the percentage of students in that cohort who were in levels III and IV and therefore considered to be “at or above grade level” in reading increased from 76.3% to 90.6%.

Figure 1
WCPSS Reading Achievement Levels Over Time
Percentage of Students at Levels III and IV

Grade	1995	1996	1997	1998	1999	2000	2001
3	74.4	76.3	75.3	79.3	80.4	83.1	85.3
4	75.2	79.9	78.7	80.3	80.8	81.6	85.9
5	79.6	77.7	80.3	84.3	84.8	87.7	90.8
6	76.8	78.8	77.8	78.8	80.7	77.9	80.7
7	80.2	78.1	78.6	80.5	84.9	84.4	85.1
8	84.0	82.8	83.3	86.4	87.1	88.7	90.6

Figure 2
WCPSS Mathematics Achievement Levels Over Time
Percentage of Students at Levels III and IV

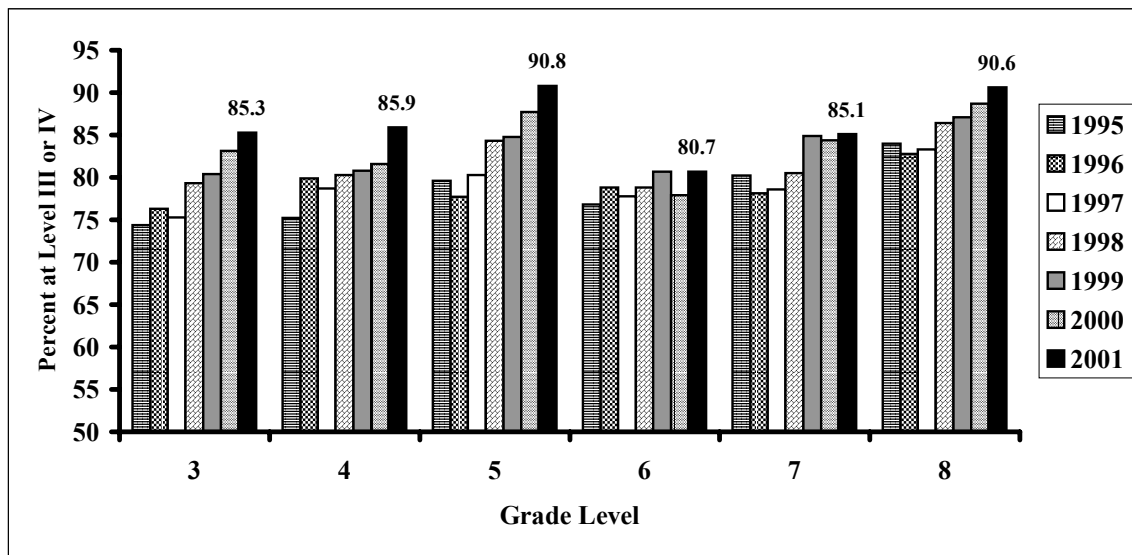
Grade	1995	1996	1997	1998	1999	2000	2001
3	73.5	76.9	76.8	75.4	77.1	80.0	84.0
4	78.0	79.6	83.3	84.1	88.1	89.2	92.7
5	77.2	78.3	80.2	84.0	87.0	88.9	92.1
6	80.1	80.7	79.7	82.7	84.8	85.3	88.1
7	81.0	80.2	81.0	83.7	87.3	86.8	87.6
8	83.2	80.6	79.0	83.2	83.8	85.7	86.9

Math achievement for the cohort of students that was in 3rd grade in 1996 and completed 8th grade in 2001 also shows the pattern of improvement over time. The percentage of students in that cohort who were in levels III and IV and therefore considered to be “at or above grade level” in math increased from 76.9% to 86.9%.

Changes Within Grade Levels Over Time

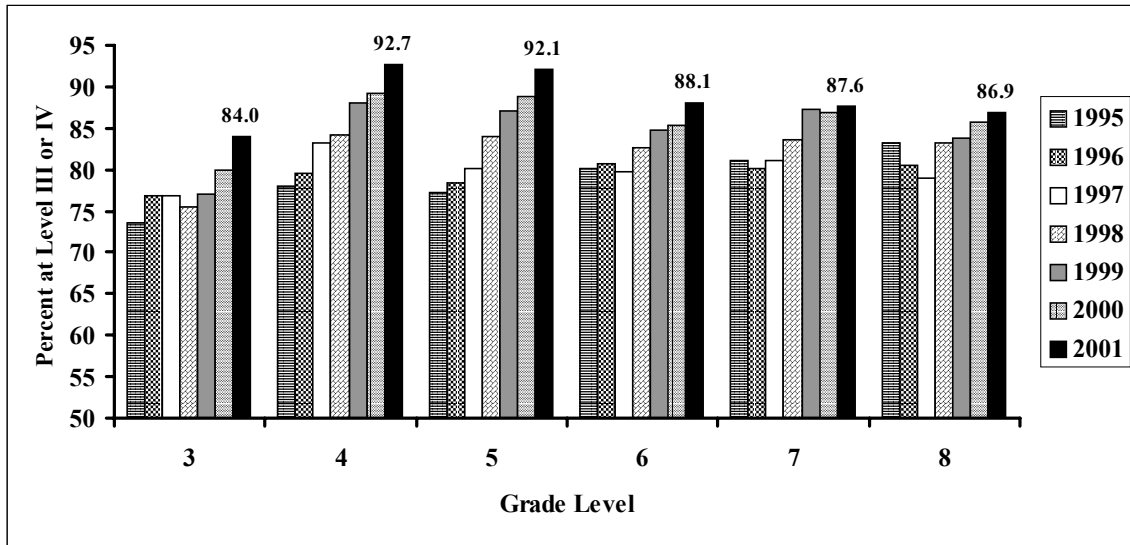
By comparing scores for a grade level to scores achieved in previous years, we see some indication of instructional changes over time, although it must be noted that different groups of students are in each grade level each year. The following graphs show changes within each grade level over the past seven years.

Figure 3
Percent of WCPSS Students in Levels III and IV in Reading



As shown in Figure 3, grades 3, 4, 5, and 8 have shown steady improvement over the past five years, while gains in grade 6 and 7 have been less even. The percentage of students scoring at or above grade level in reading in grades 6 and 7 has not shown significant increases during the past three years.

Figure 4
Percent of WCPSS Students in Levels III and IV in Mathematics



In mathematics, steady increases in the percentage of students on grade level can be seen in grades 3, 4, 5, 6, and 8. The percentage of students on grade level in grade seven for the past three years has not increased.

Scale Scores

The EOG scale score was developed by staff at the Thurstone Psychometric Laboratory at UNC-Chapel Hill. Scale scores cover the entire span from grade 3 through grade 10, and are designed to show growth over time. The scales were originally designed to begin near 100 and end near 200 with a mean of approximately 150 (anchored at the fifth grade). Mean (average) scale scores for cohorts are expected to increase as students move through grade levels and are an important way to track group changes from year to year. A new math scale was developed by NCDPI and used for reporting results on new math tests implemented in 2000-2001. The new scale range goes from approximately 211 to 310.

As shown in Figures 5 & 6, average reading scores in 2001 were the highest they have ever been at all grade levels. Because the range used for calculating math scores changed in 2001, comparisons to previous years are not valid.

Figure 5
WCPSS Reading Scale Score Means Over Time

Grade	1995	1996	1997	1998	1999	2000	2001
3	146.7	147.0	146.9	148.2	148.7	149.6	150.2
4	150.8	151.7	151.6	152.4	152.3	152.9	154.1
5	155.4	155.0	155.9	157.2	157.1	158.4	159.0
6	157.3	158.4	158.6	158.5	159.4	158.9	159.8
7	161.1	160.8	161.0	161.7	162.4	162.4	162.7
8	163.2	162.9	163.6	164.4	164.7	165.0	165.8

Figure 6
WCPSS Math Scale Score Means Over Time

Grade	1995	1996	1997	1998	1999	2000	*2001
3	143.8	144.7	145.3	144.9	145.3	146.8	253.7
4	151.4	151.4	152.6	154.0	155.0	155.9	259.1
5	158.1	158.2	159.5	160.1	161.9	163.0	263.8
6	164.4	164.9	165.1	166.1	167.1	167.8	266.1
7	171.1	170.7	171.8	172.5	173.7	174.2	270.5
8	176.1	175.5	175.4	177.4	177.5	178.4	273.7

* Note: Math scale score ranges were recalculated by NCDPI in 2001. Comparisons to previous years are not valid.

Disaggregated Results

WCPSS disaggregates results for different groups of students. The most common groupings are race and gender, and the following tables (Figures 7-12) show three years of results for the major demographic student groups. Disaggregated test results by school are included in the annual volume of *School Profiles*.

Figure 7

2001 End-of-Grade Reading Results For WCPSS (Percentage Of Students Who Scored At Level III And Level IV)						
Category	Gd. 3	Gd. 4	Gd. 5	Gd. 6	Gd. 7	Gd. 8
Total System	85.3	85.9	90.8	80.7	85.1	90.6
Not F/R	91.8	92.4	95.1	88.6	91.0	95.0
F/R Lunch	64.7	62.9	73.9	51.4	58.5	68.6
Male	83.5	84.5	89.8	78.7	83.7	88.9
Female	87.1	87.3	91.8	82.8	86.5	92.3
White	93.8	94.7	96.7	91.3	93.9	96.4
Black	65.9	65.3	76.9	56.7	64.2	76.1
Asian	94.5	94.2	95.6	94.2	91.6	94.7
Hispanic	74.5	71.7	76.2	59.1	68.8	79.9
Multiracial	85.6	88.1	93.3	85.7	86.7	94.4

Figure 8

2000 End-of-Grade Reading Results For WCPSS (Percentage Of Students Who Scored At Level III And Level IV)						
Category	Gd. 3	Gd. 4	Gd. 5	Gd. 6	Gd. 7	Gd. 8
All Students	83.1	81.6	87.7	77.9	84.4	88.7
Not F/R	90.9	89.2	93.8	85.7	91.0	93.2
F/R Lunch	57.5	54.7	65.0	46.8	57.0	66.6
Male	80.7	79.0	86.1	74.7	81.9	86.4
Female	85.7	84.5	89.4	81.2	87.0	91.3
White	92.6	91.1	95.0	88.6	93.5	95.1
Black	60.4	57.5	68.8	52.8	61.8	73.2
Asian	93.0	92.8	95.3	84.5	92.9	92.9
Hispanic	65.4	68.2	73.4	56.9	70.6	66.7
Multiracial	84.3	81.2	91.8	78.2	87.7	85.9

Figure 9

1999 End-of-Grade Reading Results For WCPSS (Percentage Of Students Who Scored At Level III And Level IV)						
Category	Gd. 3	Gd. 4	Gd. 5	Gd. 6	Gd. 7	Gd. 8
All Students	80.4	80.8	84.8	80.7	84.9	87.1
Not F/R	88.6	88.7	91.3	88.8	90.8	92.2
F/R Lunch	53.8	53.3	60.1	51.6	60.1	61.5
Male	78.2	79.0	83.6	78.7	83.0	85.4
Female	82.8	82.8	86.2	83.0	87.0	88.9
White	89.5	89.8	93.0	90.4	93.1	94.5
Black	57.7	56.5	63.8	57.1	64.5	66.3
Asian	89.5	89.6	93.1	93.3	89.4	92.2
Hispanic	62.9	65.9	70.1	67.5	65.3	75.4
Multiracial	84.5	90.0	75.7	87.3	81.6	82.9

Figure 10

2001 End-Of-Grade Mathematics Results For WCPSS (Percentage Of Students Who Scored At Level III And Level IV)						
Category	Gd. 3	Gd. 4	Gd. 5	Gd. 6	Gd. 7	Gd. 8
Total System	84.0	92.7	92.1	88.1	87.6	86.9
Not F/R	91.0	96.5	95.7	93.9	92.5	91.7
F/R Lunch	61.9	79.2	77.7	66.6	65.7	63.1
Male	83.5	92.6	91.2	87.8	87.0	85.9
Female	84.5	92.7	92.9	88.5	88.3	87.9
White	94.4	98.0	97.4	95.8	95.2	94.3
Black	60.0	79.1	78.4	70.8	69.5	67.8
Asian	93.9	99.0	98.0	96.9	95.1	95.5
Hispanic	75.3	87.4	85.6	74.5	73.2	77.1
Multiracial	81.3	93.2	94.8	88.4	87.8	86.1

Figure 11

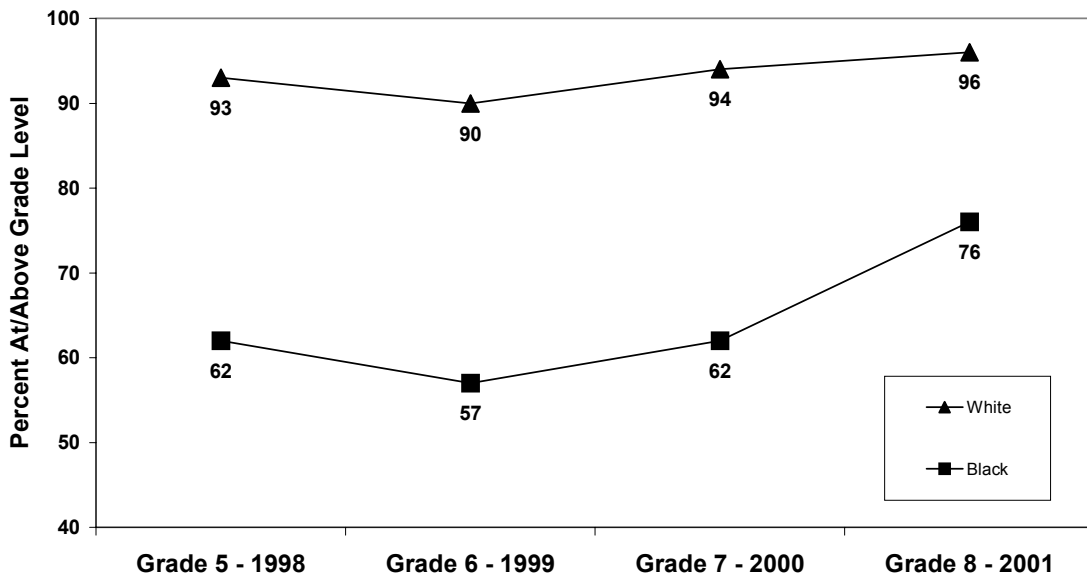
2000 End-Of-Grade Mathematics Results For WCPSS (Percentage Of Students Who Scored At Level III And Level IV)						
Category	Gd. 3	Gd. 4	Gd. 5	Gd. 6	Gd. 7	Gd. 8
Total System	80.0	89.2	88.9	85.4	86.8	85.8
Not F/R	88.4	94.6	94.0	91.6	92.8	90.6
F/R Lunch	52.1	70.3	69.9	60.6	61.8	61.8
Male	79.8	88.9	88.2	83.7	86.1	84.2
Female	80.2	89.6	89.6	87.1	87.6	87.4
White	91.4	95.7	95.4	93.7	94.8	93.6
Black	51.8	72.2	71.8	65.0	66.8	65.5
Asian	94.8	97.1	96.9	95.6	96.0	93.8
Hispanic	65.9	83.7	78.5	70.7	74.4	65.5
Multiracial	75.2	87.6	88.2	85.2	93.8	79.7

Figure 12

1999 End-Of-Grade Mathematics Results For WCPSS (Percentage Of Students Who Scored At Level III And Level IV)						
Category	Gd. 3	Gd. 4	Gd. 5	Gd. 6	Gd. 7	Gd. 8
Total System	77.1	88.1	87.0	84.8	87.4	83.9
Not F/R	86.3	94.1	92.9	91.8	92.6	89.6
F/R Lunch	47.5	67.2	64.3	59.4	64.7	54.8
Male	76.6	88.4	86.7	83.8	86.5	83.2
Female	77.7	87.9	87.2	85.9	88.2	84.6
White	87.7	95.3	94.6	93.5	94.4	93.1
Black	49.7	68.8	66.8	63.6	68.6	57.2
Asian	94.0	95.6	95.7	95.4	95.6	95.0
Hispanic	63.1	78.8	75.9	73.2	74.4	70.4
Multiracial	74.4	90.0	82.1	88.9	87.8	82.5

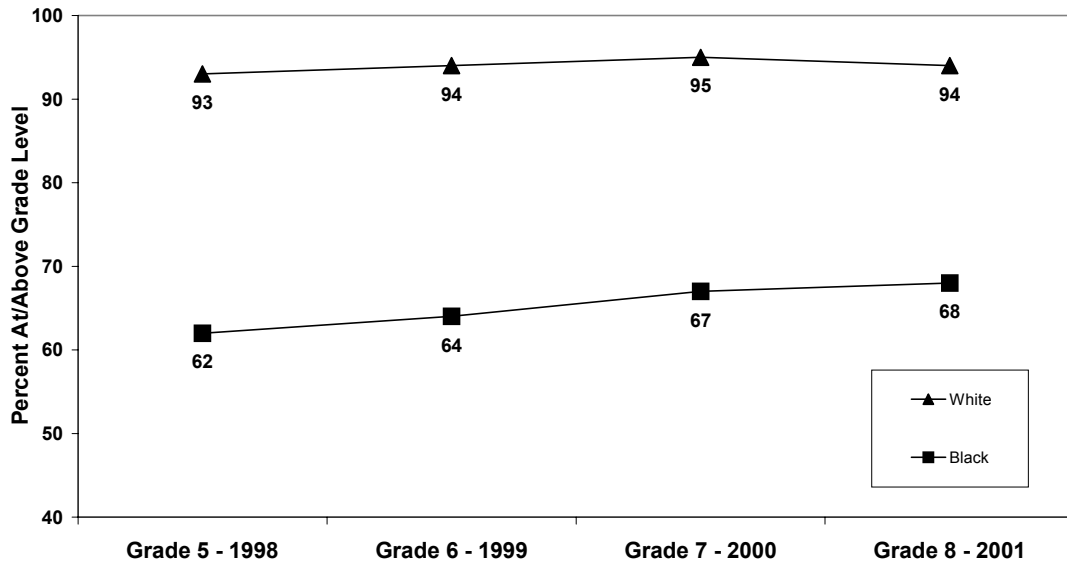
As shown in the preceding tables and illustrated below, significant gaps persist over time when achievement is disaggregated by race and gender, although the gap sometimes narrows as cohorts progress through the system. Figures 13 and 14 show reading and math performance for Black and White students across four years and the gap appears to have narrowed more in 2001 than in previous years.

Figure 13
Reading Percent At/Above Grade Level by Race
The 2000-2001 8th-grade Cohort over Time



Progress in closing the achievement gap was less dramatic in mathematics, as shown in Figure 14.

Figure 14
Math Percent At/Above Grade Level by Race
The 2000-2001 8th-grade Cohort over Time



Attached tables show the percentage of students scoring at or above grade level (Levels III and IV) in reading and math for each school, followed by pages showing average reading and math scale scores for each school.

Percent of Students In Levels III and IV on EOG Tests for Three Years

		Reading			Mathematics		
		1999	2000	2001	1999	2000	2001
304	3rd Gd:	86.3	87.8	89.9	78.7	88.8	89.9
Adams Elementary	4th Gd:	86.7	89.5	93.1	90.8	93.4	96.0
	5th Gd:	90.1	94.5	93.2	89.2	95.9	94.5
308	3rd Gd:	89.7	88.5	91.5	84.8	87.9	93.9
Apex Elementary	4th Gd:	88.5	92.8	93.9	94.3	95.3	96.9
	5th Gd:	94.1	88.8	97.8	95.9	92.0	96.8
320	3rd Gd:	79.5	79.5	78.9	74.7	72.2	70.4
Aversboro Elementary	4th Gd:	84.0	60.5	66.7	88.2	79.5	87.7
	5th Gd:	73.5	83.1	74.4	78.3	70.5	78.2
326	3rd Gd:	85.6	90.4	89.0	75.3	84.6	89.0
Baileywick Elementary	4th Gd:	80.2	84.6	84.2	90.1	89.4	93.7
	5th Gd:	81.3	94.7	93.9	82.3	91.5	92.9
328	3rd Gd:	91.9	95.9	94.1	87.6	90.7	90.4
Baucom Elementary	4th Gd:	90.1	90.9	92.6	94.3	95.7	95.9
	5th Gd:	93.1	92.5	98.6	91.7	95.9	99.3
334	3rd Gd:	80.8	88.3	93.8	77.7	90.3	98.4
Brassfield Elementary	4th Gd:	87.4	87.2	94.7	87.4	96.8	96.1
	5th Gd:	89.4	90.1	98.7	92.7	91.4	98.7
336	3rd Gd:	64.3	73.9	70.6	63.5	70.2	63.5
Brentwood Elementary	4th Gd:	80.3	62.8	70.7	83.8	93.0	77.3
	5th Gd:	76.3	77.5	79.5	85.7	91.5	96.4
340	3rd Gd:	78.7	91.0	91.3	80.9	91.0	85.9
Briarcliff Elementary	4th Gd:	83.8	78.9	91.2	83.8	84.4	94.5
	5th Gd:	85.5	89.8	96.3	84.6	90.8	95.1
344	3rd Gd:	72.4	65.4	77.3	69.7	69.2	69.7
Brooks Elementary	4th Gd:	71.9	62.1	76.8	76.4	68.2	88.4
	5th Gd:	88.0	77.5	91.2	86.7	79.8	91.2
352	3rd Gd:	83.3	85.5	89.9	83.3	80.3	82.6
Bugg Elementary	4th Gd:	79.0	82.5	89.7	85.2	83.8	98.5
	5th Gd:	79.4	82.1	89.0	65.1	78.6	85.4
362	3rd Gd:	62.0	75.5	80.9	62.0	72.8	75.9
Carver Elementary	4th Gd:	65.9	64.6	78.6	71.8	83.9	96.6
	5th Gd:	65.6	77.0	82.4	78.7	80.0	92.6
364	3rd Gd:	80.8	71.5	76.5	78.3	65.9	75.9
Cary Elementary	4th Gd:	65.0	75.7	73.3	79.6	81.8	82.6
	5th Gd:	80.9	79.5	84.5	84.3	87.6	90.6
376	3rd Gd:	88.5	83.3	89.2	86.2	86.3	89.2
Combs Elementary	4th Gd:	76.0	98.6	93.3	93.3	100.0	100.0
	5th Gd:	87.9	90.4	96.3	100.0	91.8	95.0

Percent of Students In Levels III and IV on EOG Tests for Three Years

		Reading			Mathematics		
		1999	2000	2001	1999	2000	2001
380	3rd Gd:	74.1	58.5	73.5	72.9	58.5	72.3
Conn Elementary	4th Gd:	78.9	78.9	64.6	85.7	78.9	84.8
	5th Gd:	73.5	78.3	85.9	77.1	85.5	90.2
384	3rd Gd:	68.0	51.1	84.2	57.3	41.5	75.0
Creech Road Elementary	4th Gd:	65.1	57.3	82.2	80.0	77.6	90.5
	5th Gd:	74.0	71.7	85.2	81.3	75.0	76.5
390	3rd Gd:	94.2	98.3	96.5	94.8	97.1	97.0
Davis Drive Elementary	4th Gd:	96.0	97.6	97.7	99.4	98.8	100.0
	5th Gd:	95.9	98.2	98.8	97.7	100.0	98.8
393	3rd Gd:		81.8	88.1		76.9	89.0
Dillard Dr. Elementary	4th Gd:		84.1	88.7		92.1	94.9
	5th Gd:		87.6	89.1		87.6	90.1
396	3rd Gd:	79.4	77.0	79.4	69.6	55.4	76.2
Douglas Elementary	4th Gd:	83.8	86.2	86.7	80.9	91.2	88.0
	5th Gd:	81.0	86.2	88.7	75.9	83.3	87.3
398	3rd Gd:	86.4	88.6	93.1	87.0	83.7	96.9
Durant Road Elementary	4th Gd:	91.2	94.0	92.2	96.5	98.2	95.2
	5th Gd:	90.8	97.6	97.6	98.3	96.5	98.8
414	3rd Gd:	74.3	78.8	84.4	73.7	72.0	85.6
Farmington Woods Elementa	4th Gd:	78.0	79.7	85.4	83.7	85.8	92.3
	5th Gd:	82.5	83.3	88.5	87.2	79.0	91.2
415	3rd Gd:	78.9	82.7	89.7	76.2	70.3	79.5
Fox Road Elementary	4th Gd:	75.4	82.4	86.2	85.2	84.9	94.3
	5th Gd:	87.8	88.6	91.9	93.2	85.9	91.1
416	3rd Gd:	72.5	79.7	82.4	67.9	72.5	76.5
Fuller Elementary	4th Gd:	74.7	73.5	88.4	81.3	77.4	87.0
	5th Gd:	75.3	75.0	85.1	67.4	73.8	73.8
420	3rd Gd:	64.9	74.8	78.7	56.5	73.3	83.7
Fuquay-Varina Elementary	4th Gd:	70.1	63.5	83.9	81.0	75.9	94.7
	5th Gd:	82.0	77.9	83.7	83.2	85.0	85.1
439	3rd Gd:			94.3			97.1
Green Hope Elementary	4th Gd:			99.0			99.0
	5th Gd:			98.3			100.0
440	3rd Gd:	87.9	91.4	90.0	83.0	87.6	94.2
Green Elementary	4th Gd:	84.7	83.6	91.6	94.6	93.8	96.2
	5th Gd:	82.8	91.5	90.1	88.2	93.1	95.4
442	3rd Gd:	84.3	88.4	90.9	82.0	82.6	90.9
Hilburn Drive Elementary	4th Gd:		76.7	84.6		84.4	90.6
	5th Gd:		88.8	92.0		88.8	94.3

Percent of Students In Levels III and IV on EOG Tests for Three Years

		Reading			Mathematics		
		1999	2000	2001	1999	2000	2001
446	3rd Gd:	64.1	66.7	77.2	64.8	62.2	72.0
Hodge Road Elementary	4th Gd:	68.2	66.0	75.7	88.3	82.0	85.2
	5th Gd:	69.2	77.8	85.6	70.1	77.1	84.0
	<hr/>						
447	3rd Gd:	81.1	76.2	82.8	77.9	78.5	83.0
Holly Springs Elementary	4th Gd:	73.9	83.3	85.4	86.3	92.4	93.5
	5th Gd:	76.7	85.0	90.2	85.4	94.0	92.2
	<hr/>						
448	3rd Gd:	79.4	89.3	82.9	76.2	85.1	85.6
Hunter Elementary	4th Gd:	90.5	82.1	81.6	88.8	85.4	90.3
	5th Gd:	82.8	92.4	93.3	80.5	91.6	90.8
	<hr/>						
452	3rd Gd:	80.2	86.5	83.7	73.6	85.6	80.6
Jeffreys Grove Elementary	4th Gd:	80.4	85.7	88.5	85.3	90.1	96.2
	5th Gd:	84.5	85.4	87.9	77.3	84.5	90.1
	<hr/>						
454	3rd Gd:	82.8	90.3	88.7	85.2	89.7	87.9
Jones Dairy Elementary	4th Gd:	89.3	85.1	92.3	97.3	92.6	94.9
	5th Gd:	86.3	94.3	91.0	88.8	95.3	95.9
	<hr/>						
456	3rd Gd:	78.5	78.7	82.6	76.3	73.7	78.2
Joyner Elementary	4th Gd:	76.0	74.5	82.4	90.0	83.3	85.1
	5th Gd:	92.9	89.1	86.4	89.5	87.3	87.5
	<hr/>						
460	3rd Gd:	89.2	96.4	93.2	93.2	100.0	95.5
Kingswood Elementary	4th Gd:	88.6	92.4	92.6	97.1	98.5	100.0
	5th Gd:	94.7	98.5	98.1	98.2	100.0	100.0
	<hr/>						
464	3rd Gd:	76.7	63.4	79.1	61.2	57.1	70.4
Knightdale Elementary	4th Gd:	60.6	78.6	73.0	77.8	79.7	86.5
	5th Gd:	72.9	73.7	87.4	76.9	65.7	88.2
	<hr/>						
468	3rd Gd:	80.4	80.6	79.1	76.7	72.5	91.9
Lacy Elementary	4th Gd:	77.8	85.7	81.1	86.9	87.9	88.4
	5th Gd:	88.3	87.1	94.0	90.2	85.1	98.8
	<hr/>						
469	3rd Gd:		77.6	94.7		77.6	91.5
Leesville Road Elementary	4th Gd:	82.0	90.7	92.5	88.8	97.3	97.0
	5th Gd:	87.2	91.5	99.0	89.6	91.5	96.9
	<hr/>						
470	3rd Gd:	83.1	89.2	83.8	77.7	87.8	82.1
Lead Mine Elementary	4th Gd:	83.5	84.3	86.4	87.0	89.8	90.0
	5th Gd:	85.7	89.1	91.4	83.9	91.4	95.1
	<hr/>						
476	3rd Gd:	70.5	72.9	80.3	57.5	75.9	82.7
Lincoln Heights Elementary	4th Gd:	76.6	69.0	92.9	75.6	74.5	93.0
	5th Gd:	85.9	81.7	85.1	89.2	75.3	88.8
	<hr/>						
480	3rd Gd:	65.1	75.5	87.6	60.6	77.8	81.7
Lockhart Elementary	4th Gd:	68.4	79.8	89.6	68.4	89.4	97.0
	5th Gd:	80.4	86.9	95.3	76.5	83.5	89.7
	<hr/>						

Percent of Students In Levels III and IV on EOG Tests for Three Years

		Reading			Mathematics		
		1999	2000	2001	1999	2000	2001
488	3rd Gd:	79.6	76.3	84.8	78.5	75.8	73.9
Lynn Road Elementary	4th Gd:	79.8	78.4	84.9	88.5	89.7	90.9
	5th Gd:	83.5	79.8	84.8	82.8	78.0	88.2
	<hr/>						
494	3rd Gd:			79.5			72.6
Middle Creek Elementary	4th Gd:			78.1			89.0
	5th Gd:			82.8			89.1
	<hr/>						
496	3rd Gd:	76.0	73.5	81.8	74.7	68.7	71.3
Millbrook Elementary	4th Gd:	80.0	79.7	74.7	85.7	87.0	81.3
	5th Gd:	81.8	81.7	91.4	82.3	89.2	88.9
	<hr/>						
504	3rd Gd:	98.2	97.5	96.8	99.4	95.6	96.1
Morrisville Elementary	4th Gd:	93.6	95.7	96.1	97.1	97.6	98.7
	5th Gd:	96.3	97.9	99.4	96.3	96.5	100.0
	<hr/>						
516	3rd Gd:	80.2	92.3	91.5	77.9	87.9	91.5
North Ridge Elementary	4th Gd:	83.1	83.3	94.1	94.0	92.3	96.4
	5th Gd:	84.0	93.2	95.7	88.7	92.1	93.6
	<hr/>						
520	3rd Gd:	91.1	84.9	91.9	87.0	83.8	92.8
Northwoods Elementary	4th Gd:	82.7	89.9	92.9	87.2	94.4	92.9
	5th Gd:	84.9	86.6	93.6	85.7	89.8	93.6
	<hr/>						
522	3rd Gd:	96.5	96.5	95.1	94.7	95.9	96.3
Oak Grove Elementary	4th Gd:	95.0	92.9	94.6	98.2	95.2	98.2
	5th Gd:	95.7	97.5	96.9	98.8	98.5	97.6
	<hr/>						
523	3rd Gd:	84.7	95.2	90.7	91.0	91.0	93.5
Olive Chapel Elementary	4th Gd:	87.4	85.0	96.9	93.3	93.2	97.7
	5th Gd:	88.6	91.4	91.9	90.4	91.4	94.6
	<hr/>						
524	3rd Gd:	80.4	85.1	81.8	73.9	93.6	78.8
Olds @ Cardinal Gibbons	4th Gd:	85.7	75.0	84.0	98.2	92.5	96.0
	5th Gd:	87.7	92.2	82.9	91.2	96.1	95.1
	<hr/>						
525	3rd Gd:		91.4	90.0		91.4	90.0
Partnership Elementary	4th Gd:			83.3			94.4
	5th Gd:						
	<hr/>						
530	3rd Gd:	79.3	82.2	89.1	77.5	82.2	83.7
Penny Road Elementary	4th Gd:	76.5	83.7	77.8	83.2	91.3	91.9
	5th Gd:	89.4	88.3	97.7	89.4	89.2	96.6
	<hr/>						
531	3rd Gd:	89.0	83.9	91.3	93.6	79.8	95.2
Pleasant Union Elementary	4th Gd:	95.7	90.1	91.1	97.9	95.0	95.5
	5th Gd:	93.4	96.4	95.2	96.7	93.7	94.4
	<hr/>						
532	3rd Gd:	73.6	86.3	83.3	64.2	75.5	80.3
Poe Elementary	4th Gd:	100.0	71.7	78.7	100.0	82.6	80.9
	5th Gd:		100.0	92.1		100.0	94.7
	<hr/>						

Percent of Students In Levels III and IV on EOG Tests for Three Years

		Reading			Mathematics		
		1999	2000	2001	1999	2000	2001
536	3rd Gd:	76.0	70.3	71.1	73.0	58.7	62.9
Powell Elementary	4th Gd:	89.4	91.4	67.4	92.9	93.0	81.1
	5th Gd:	89.4	87.1	95.9	92.6	95.7	97.3
	<hr/>						
540	3rd Gd:	71.7	73.6	72.6	72.1	72.1	65.3
Rand Road Elementary	4th Gd:	70.2	68.9	74.0	79.8	75.0	83.7
	5th Gd:	74.2	70.7	82.8	80.8	74.4	83.9
	<hr/>						
542	3rd Gd:		88.7	85.5		81.1	80.3
Reedy Creek Elem.	4th Gd:		85.2	86.9		95.4	90.9
	5th Gd:		91.8	96.3		89.8	93.5
	<hr/>						
544	3rd Gd:	70.5	77.7	68.4	61.0	68.0	69.6
Rolesville Elementary	4th Gd:	68.3	73.8	81.4	82.5	85.9	93.0
	5th Gd:	76.0	83.3	85.0	76.0	84.4	83.9
	<hr/>						
548	3rd Gd:	76.7	80.5	84.6	75.6	81.6	81.8
Root Elementary	4th Gd:	91.4	88.1	86.4	92.9	92.9	95.0
	5th Gd:	85.7	93.8	88.2	83.3	96.8	89.7
	<hr/>						
550	3rd Gd:			93.1			93.1
Salem Elementary	4th Gd:			91.7			92.9
	5th Gd:			88.2			93.4
	<hr/>						
560	3rd Gd:	81.6	71.4	74.8	75.3	64.8	76.0
Smith Elementary	4th Gd:	76.2	68.9	83.1	76.7	84.6	94.0
	5th Gd:	83.7	82.7	86.4	84.1	84.6	78.7
	<hr/>						
564	3rd Gd:	85.4	89.7	91.8	86.6	88.5	87.8
Stough Elementary	4th Gd:	83.7	83.3	93.4	92.4	89.7	93.4
	5th Gd:	87.0	94.9	89.5	89.6	94.9	90.7
	<hr/>						
568	3rd Gd:	72.3	88.2	76.3	69.3	75.8	71.1
Swift Creek Elementary	4th Gd:	76.0	83.5	71.0	83.1	85.4	77.0
	5th Gd:	85.2	87.7	82.1	81.7	91.1	79.4
	<hr/>						
570	3rd Gd:	91.3	91.9	91.9	87.8	90.5	95.5
Timber Drive Elementary	4th Gd:	87.3	85.2	90.7	91.8	97.2	97.8
	5th Gd:	94.8	90.6	92.5	96.9	92.5	96.3
	<hr/>						
572	3rd Gd:	69.0	64.3	70.0	62.0	53.6	70.0
Underwood Elementary	4th Gd:	73.2	73.0	67.3	79.3	83.9	76.9
	5th Gd:	79.5	86.1	83.0	83.6	83.1	88.5
	<hr/>						
576	3rd Gd:	79.3	79.2	82.1	70.8	84.7	87.6
Vance Elementary	4th Gd:	71.6	72.6	76.3	91.4	83.7	90.0
	5th Gd:	72.9	84.0	82.1	82.4	93.3	88.1
	<hr/>						
580	3rd Gd:	72.1	88.5	86.4	65.1	88.5	85.2
Vandora Springs Elem.	4th Gd:	71.0	81.7	94.7	77.4	94.0	100.0
	5th Gd:	73.1	82.0	92.6	80.6	85.5	93.6
	<hr/>						

Percent of Students In Levels III and IV on EOG Tests for Three Years

		Reading			Mathematics		
		1999	2000	2001	1999	2000	2001
584	3rd Gd:	76.2	81.4	89.6	65.9	72.9	79.9
Wake Forest Elementary	4th Gd:	76.4	74.5	82.5	82.6	87.3	92.0
	5th Gd:	78.0	86.7	88.4	80.5	83.2	87.1
	<hr/>						
593	3rd Gd:		89.1	84.9		80.0	86.1
Wakefield Elem.	4th Gd:		84.3	88.1		92.2	94.1
	5th Gd:			90.6			92.9
	<hr/>						
596	3rd Gd:	78.0	83.0	86.5	68.1	72.3	86.5
Washington Elementary	4th Gd:	77.9	84.0	83.0	85.6	87.7	95.7
	5th Gd:	86.6	84.8	89.8	85.6	86.7	91.7
	<hr/>						
598	3rd Gd:	84.1	91.7	86.7	82.7	90.7	94.6
Weatherstone Elem.	4th Gd:	86.1	85.8	93.3	93.0	94.5	97.9
	5th Gd:	94.0	91.5	99.1	93.4	94.3	100.0
	<hr/>						
600	3rd Gd:	60.9	62.0	71.7	55.3	63.3	62.8
Wendell Elementary	4th Gd:	76.2	73.3	76.2	92.1	91.9	87.2
	5th Gd:	78.5	90.2	86.5	88.5	91.3	94.4
	<hr/>						
606	3rd Gd:	87.1	86.8	93.4	86.5	89.7	93.5
West Lake Elementary	4th Gd:	88.8	89.4	93.5	97.2	94.7	99.4
	5th Gd:	91.3	94.3	96.1	97.1	94.9	97.7
	<hr/>						
616	3rd Gd:	81.8	82.0	81.5	85.4	82.5	88.7
Wilburn Elementary	4th Gd:	86.4	82.3	84.3	94.2	90.8	92.2
	5th Gd:	82.9	91.1	90.1	85.5	93.8	93.7
	<hr/>						
618	3rd Gd:		81.6	78.7		70.1	72.1
Wildwood Forest Elem.	4th Gd:		74.4	82.8		84.4	85.0
	5th Gd:			88.8			88.8
	<hr/>						
620	3rd Gd:	72.7	86.5	79.3	77.3	82.7	71.2
Wiley Elementary	4th Gd:	80.0	85.0	75.9	90.0	93.3	89.5
	5th Gd:	78.9	94.6	90.0	75.4	91.1	88.3
	<hr/>						
624	3rd Gd:	76.0	87.1	82.1	65.9	86.5	92.9
Willow Springs Elem.	4th Gd:	68.7	76.5	83.7	78.8	84.0	95.4
	5th Gd:	88.8	86.5	90.4	93.9	94.2	95.7
	<hr/>						
626	3rd Gd:			81.3			81.6
Yates Mill Elementary	4th Gd:			89.9			95.7
	5th Gd:			91.7			97.9
	<hr/>						
628	3rd Gd:	81.9	83.7	81.3	81.9	88.8	81.3
York Elementary	4th Gd:	81.5	81.9	85.4	87.3	88.6	89.9
	5th Gd:	89.5	92.8	85.1	90.5	92.9	89.7
	<hr/>						
632	3rd Gd:	80.2	76.4	74.1	78.1	79.0	79.7
Zebulon Elementary	4th Gd:	73.3	72.9	83.9	94.1	90.6	92.4
	5th Gd:	87.1	79.1	78.2	92.2	91.2	86.3
	<hr/>						

Percent of Students In Levels III and IV on EOG Tests for Three Years

		Reading			Mathematics		
		1999	2000	2001	1999	2000	2001
312	6th Gd:	85.2	84.8	88.4	89.4	91.2	92.7
Apex Middle	7th Gd:	85.4	88.6	92.9	85.7	91.8	93.9
	8th Gd:	88.2	88.6	92.7	87.4	90.2	92.7
356	6th Gd:	76.1	72.5	73.6	82.3	80.3	81.6
Carnage Middle	7th Gd:	78.7	76.6	75.5	81.5	84.1	76.0
	8th Gd:	81.8	84.7	85.4	79.5	79.7	83.7
360	6th Gd:	78.9	72.7	72.2	81.6	85.8	83.2
Carroll Middle	7th Gd:	89.0	87.9	85.0	90.6	92.8	81.7
	8th Gd:	89.9	91.3	90.8	86.7	88.3	88.4
370	6th Gd:			83.1			87.1
Centennial Middle	7th Gd:			75.9			78.6
	8th Gd:			88.9			80.8
388	6th Gd:	79.7	73.2	83.4	84.3	82.9	88.9
Daniels Middle	7th Gd:	79.4	84.0	84.5	80.3	82.8	83.2
	8th Gd:	87.9	87.1	91.2	83.9	85.4	84.8
391	6th Gd:	91.0	90.1	90.8	90.1	92.1	95.4
Davis Drive Middle	7th Gd:	89.8	91.5	92.4	92.5	93.6	95.1
	8th Gd:	94.4	93.2	95.0	90.8	92.7	93.5
394	6th Gd:		80.1	79.4		87.5	87.3
Dillard Middle	7th Gd:		89.0	86.3		92.4	88.0
	8th Gd:			95.2			92.6
399	6th Gd:	89.7	83.7	89.3	93.7	91.3	95.8
Durant Road Middle	7th Gd:	89.8	91.5	91.0	91.9	93.9	93.2
	8th Gd:	92.4	95.6	97.4	89.7	90.9	93.6
400	6th Gd:	79.8	77.4	79.3	85.7	87.0	88.0
East Cary Middle	7th Gd:	93.4	83.7	85.9	92.6	86.5	88.4
	8th Gd:	94.2	93.2	89.2	92.8	91.0	90.8
404	6th Gd:	68.1	58.6	69.2	71.1	73.7	79.0
East Garner Middle	7th Gd:	79.7	73.2	71.7	76.5	77.5	80.3
	8th Gd:	80.4	88.3	91.2	76.3	80.9	78.9
408	6th Gd:	79.4	68.7	77.0	76.4	73.0	81.9
East Millbrook Middle	7th Gd:	79.6	81.2	77.1	79.3	78.5	83.4
	8th Gd:	79.9	83.3	86.2	67.2	76.5	74.9
410	6th Gd:	68.9	65.7	68.3	76.3	77.0	77.3
East Wake Middle	7th Gd:	84.4	72.9	72.5	84.0	76.6	80.3
	8th Gd:	77.4	80.6	82.3	72.9	77.8	76.7

Percent of Students In Levels III and IV on EOG Tests for Three Years

		Reading			Mathematics		
		1999	2000	2001	1999	2000	2001
424	6th Gd:	70.8	75.5	70.7	82.4	82.5	85.2
Fuquay-Varina Middle	7th Gd:	79.9	79.5	85.5	80.2	81.1	84.9
	8th Gd:	79.4	83.7	87.6	77.0	78.1	81.4
471	6th Gd:	83.6	81.9	86.8	87.6	86.6	92.4
Leesville Road Middle	7th Gd:	92.4	88.2	93.1	92.5	92.0	90.7
	8th Gd:	92.1	94.0	93.4	87.8	92.0	92.8
472	6th Gd:	87.3	85.3	87.7	89.1	89.7	92.6
Ligon Middle	7th Gd:	82.9	92.0	90.5	88.1	90.9	95.5
	8th Gd:	86.1	87.5	95.8	81.0	82.5	92.8
484	6th Gd:		93.5	92.0		94.3	96.7
Lufkin Rd. Middle	7th Gd:			96.0			98.4
	8th Gd:						
492	6th Gd:	83.0	81.8	82.2	89.6	89.0	89.6
Martin Middle	7th Gd:	87.3	83.5	88.5	90.5	86.7	90.0
	8th Gd:	90.9	89.0	90.0	87.4	86.9	86.4
512	6th Gd:	59.9	63.4	63.0	67.8	73.9	72.8
North Garner Middle	7th Gd:	74.3	67.2	68.6	84.4	77.2	84.6
	8th Gd:	80.4	80.9	79.2	77.4	80.5	69.3
592	6th Gd:	80.4	72.9	71.2	80.5	84.4	83.2
Wake Forest-Rolesville Mid.	7th Gd:	83.6	87.1	79.9	83.8	85.0	81.6
	8th Gd:	81.2	90.7	91.6	80.1	86.5	85.5
594	6th Gd:		81.8	86.9		92.4	93.2
Wakefield Middle	7th Gd:			86.2			87.5
	8th Gd:						
604	6th Gd:	88.3	79.7	83.9	90.9	90.0	90.7
West Cary Middle	7th Gd:	89.0	91.2	89.9	92.2	90.7	90.5
	8th Gd:	88.8	90.9	93.5	84.6	90.6	94.4
607	6th Gd:	90.3	89.8	92.2	94.7	94.6	94.9
West Lake Middle	7th Gd:	92.8	91.8	96.0	94.2	94.7	95.8
	8th Gd:	96.3	95.0	96.8	96.1	93.7	95.0
608	6th Gd:	76.1	77.5	88.7	75.4	84.1	92.7
West Millbrook Middle	7th Gd:	78.2	85.0	86.7	85.1	85.3	93.3
	8th Gd:	91.2	85.2	92.4	89.4	83.6	90.4
636	6th Gd:	68.4	67.5	68.9	77.0	73.2	84.0
Zebulon Middle	7th Gd:	75.6	77.7	75.2	90.1	84.1	79.3
	8th Gd:	77.6	86.0	83.5	73.3	79.2	84.3

EOG Mean Scale Scores for Three Years

		Reading			Mathematics		
		1999	2000	2001	1999	2000	2001
304 Adams Elementary	3rd Gd:	149.7	151.8	152.9	146.2	149.7	256.5
	4th Gd:	154.0	154.8	157.3	157.9	159.2	263.8
	5th Gd:	158.0	160.3	160.3	163.3	166.2	266.4
308 Apex Elementary	3rd Gd:	151.1	153.0	152.7	147.7	148.6	256.6
	4th Gd:	154.7	156.5	157.0	157.0	158.6	262.8
	5th Gd:	160.8	160.9	161.6	166.1	165.3	267.6
320 Aversboro Elementary	3rd Gd:	145.8	147.9	148.2	144.0	143.9	250.6
	4th Gd:	151.5	147.4	148.7	152.5	150.7	254.7
	5th Gd:	153.4	155.3	153.6	155.4	156.2	255.7
326 Baileywick Elementary	3rd Gd:	149.2	151.6	150.9	144.7	149.5	255.1
	4th Gd:	151.8	152.9	154.7	153.6	155.6	259.9
	5th Gd:	156.5	160.0	160.6	161.3	163.5	265.8
328 Baucom Elementary	3rd Gd:	152.7	153.9	153.6	149.2	149.2	255.6
	4th Gd:	155.4	156.4	156.9	158.0	160.0	261.5
	5th Gd:	159.3	161.2	162.1	164.5	167.1	268.3
334 Brassfield Elementary	3rd Gd:	148.8	152.0	155.4	145.9	151.3	258.9
	4th Gd:	154.4	155.3	158.6	156.8	160.9	265.7
	5th Gd:	158.6	159.7	163.0	164.5	165.1	270.4
336 Brentwood Elementary	3rd Gd:	144.1	145.0	144.5	141.4	142.8	249.6
	4th Gd:	151.3	147.2	147.9	153.9	152.0	252.4
	5th Gd:	153.9	155.4	154.5	157.4	161.7	260.4
340 Briarcliff Elementary	3rd Gd:	149.6	152.5	151.2	146.6	149.5	253.6
	4th Gd:	151.8	152.2	156.1	152.4	154.8	260.7
	5th Gd:	157.2	159.0	161.8	160.7	164.2	265.2
344 Brooks Elementary	3rd Gd:	146.5	144.5	147.9	142.2	141.2	250.0
	4th Gd:	149.8	148.0	150.9	150.6	147.8	255.0
	5th Gd:	159.0	156.5	158.2	162.6	159.8	261.6
352 Bugg Elementary	3rd Gd:	151.2	150.7	150.5	146.6	146.7	252.4
	4th Gd:	150.6	152.6	155.9	151.7	154.2	259.4
	5th Gd:	154.9	156.4	158.5	153.9	158.2	261.1
362 Carver Elementary	3rd Gd:	142.1	146.0	147.1	140.1	142.9	250.3
	4th Gd:	148.7	148.5	151.8	150.1	153.0	257.6
	5th Gd:	152.2	154.8	155.2	155.2	161.1	261.7
364 Cary Elementary	3rd Gd:	147.3	146.9	148.3	144.5	143.5	251.4
	4th Gd:	148.8	151.3	151.2	151.4	153.8	256.2
	5th Gd:	157.2	156.0	156.8	163.5	161.3	261.2
376 Combs Elementary	3rd Gd:	151.1	150.2	152.9	149.1	149.2	256.0
	4th Gd:	151.4	157.2	155.7	154.4	161.2	263.3
	5th Gd:	158.3	158.8	160.9	165.7	165.2	266.5

EOG Mean Scale Scores for Three Years

		Reading			Mathematics		
		1999	2000	2001	1999	2000	2001
380 Conn Elementary	3rd Gd:	146.9	144.5	147.2	143.3	140.4	250.7
	4th Gd:	151.1	152.2	149.4	152.8	154.8	255.8
	5th Gd:	154.4	155.4	158.1	159.9	160.9	262.4
384 Creech Road Elementary	3rd Gd:	143.8	141.1	146.2	140.3	136.2	249.7
	4th Gd:	146.7	146.4	149.6	150.1	149.8	255.3
	5th Gd:	153.5	152.3	154.5	156.9	154.6	256.8
390 Davis Drive Elementary	3rd Gd:	153.9	154.8	154.7	152.4	155.2	257.7
	4th Gd:	156.9	158.0	158.8	161.5	162.1	265.1
	5th Gd:	160.9	162.2	163.2	165.5	168.4	268.0
393 Dillard Dr. Elementary	3rd Gd:		149.7	151.2		145.9	255.6
	4th Gd:		154.8	155.0		159.4	259.3
	5th Gd:		158.9	158.9		164.6	262.1
396 Douglas Elementary	3rd Gd:	147.5	149.2	148.3	141.8	142.8	251.1
	4th Gd:	151.9	154.1	155.0	154.2	155.6	257.9
	5th Gd:	155.6	157.8	159.4	159.2	160.7	262.8
398 Durant Road Elementary	3rd Gd:	150.5	150.9	153.7	147.3	148.4	257.0
	4th Gd:	155.2	155.3	155.4	159.0	159.2	260.3
	5th Gd:	159.0	161.3	160.8	166.0	167.5	268.1
414 Farmington Woods Elementa	3rd Gd:	148.1	148.8	151.3	145.4	144.6	255.5
	4th Gd:	151.6	153.1	154.6	153.1	154.4	260.0
	5th Gd:	157.3	157.9	159.3	161.7	160.2	265.2
415 Fox Road Elementary	3rd Gd:	148.5	148.7	149.0	143.7	143.5	252.0
	4th Gd:	151.0	151.8	152.3	152.6	153.6	257.3
	5th Gd:	156.6	157.4	157.4	161.2	159.9	261.0
416 Fuller Elementary	3rd Gd:	147.1	148.6	150.3	141.5	143.7	252.1
	4th Gd:	151.3	151.6	154.7	152.2	152.8	257.7
	5th Gd:	154.7	156.6	158.8	156.7	158.3	260.3
420 Fuquay-Varina Elementary	3rd Gd:	144.3	146.1	147.7	139.3	143.2	252.2
	4th Gd:	149.2	148.4	152.8	151.9	151.2	258.4
	5th Gd:	155.6	155.5	156.1	159.4	161.2	259.2
439 Green Hope Elementary	3rd Gd:			154.3			257.9
	4th Gd:			159.6			265.7
	5th Gd:			163.8			273.7
440 Green Elementary	3rd Gd:	150.6	151.7	152.4	147.4	149.0	256.3
	4th Gd:	152.6	154.1	155.5	156.4	157.4	261.5
	5th Gd:	156.6	159.6	159.4	162.2	166.1	266.4
442 Hilburn Drive Elementary	3rd Gd:	149.7	150.1	151.4	145.5	147.3	255.4
	4th Gd:		151.4	153.4		152.4	258.9
	5th Gd:		158.4	160.6		163.5	266.9

EOG Mean Scale Scores for Three Years

		Reading			Mathematics		
		1999	2000	2001	1999	2000	2001
446	3rd Gd:	143.5	144.2	147.3	140.5	139.9	249.6
Hodge Road Elementary	4th Gd:	147.3	147.0	148.8	153.0	149.9	253.2
	5th Gd:	152.2	154.2	154.5	154.6	157.4	258.5
447	3rd Gd:	148.8	147.8	148.8	144.4	145.5	252.6
Holly Springs Elementary	4th Gd:	151.3	152.1	152.2	152.9	155.9	258.1
	5th Gd:	154.6	156.6	157.8	159.9	162.3	262.4
448	3rd Gd:	149.9	152.6	150.9	147.2	149.4	254.9
Hunter Elementary	4th Gd:	157.5	155.2	155.4	158.4	157.6	260.0
	5th Gd:	158.1	162.1	161.5	162.2	166.1	267.6
452	3rd Gd:	149.5	151.7	150.2	145.4	149.7	254.3
Jeffreys Grove Elementary	4th Gd:	153.2	155.4	155.7	156.7	159.2	260.4
	5th Gd:	156.6	158.7	158.7	160.5	163.7	264.2
454	3rd Gd:	150.7	152.1	150.7	146.8	149.0	254.5
Jones Dairy Elementary	4th Gd:	153.6	154.2	156.3	156.3	156.5	260.2
	5th Gd:	159.3	160.5	159.3	162.5	164.8	264.0
456	3rd Gd:	147.6	147.1	149.4	145.9	144.7	251.9
Joyner Elementary	4th Gd:	151.7	151.5	152.1	155.8	152.9	255.9
	5th Gd:	159.7	158.7	157.0	164.2	162.8	261.4
460	3rd Gd:	151.9	154.5	153.6	150.3	154.0	256.4
Kingswood Elementary	4th Gd:	155.5	155.8	157.2	160.9	162.5	264.4
	5th Gd:	160.9	162.2	162.1	171.4	172.6	273.1
464	3rd Gd:	145.4	143.9	146.1	140.1	138.3	249.5
Knightdale Elementary	4th Gd:	146.1	150.0	149.4	147.4	150.4	253.6
	5th Gd:	153.0	153.1	156.1	155.7	154.0	257.1
468	3rd Gd:	149.7	149.9	150.4	146.3	146.4	256.2
Lacy Elementary	4th Gd:	153.0	155.8	154.4	154.8	157.8	259.3
	5th Gd:	159.2	160.4	161.8	163.4	162.5	267.9
469	3rd Gd:		148.7	153.1		146.5	257.1
Leesville Road Elementary	4th Gd:	152.8	155.0	157.4	155.6	158.6	262.3
	5th Gd:	157.3	160.4	161.6	163.2	167.0	267.4
470	3rd Gd:	149.2	151.6	150.2	145.5	149.4	252.9
Lead Mine Elementary	4th Gd:	152.9	153.0	154.8	155.8	155.6	259.6
	5th Gd:	157.1	158.9	160.3	161.2	163.5	265.7
476	3rd Gd:	145.4	146.9	148.2	139.0	145.0	252.5
Lincoln Heights Elementary	4th Gd:	149.6	148.9	155.1	149.4	151.2	257.7
	5th Gd:	156.5	156.3	157.0	160.7	158.2	259.8
480	3rd Gd:	144.1	147.6	149.4	140.0	144.9	251.4
Lockhart Elementary	4th Gd:	146.9	151.3	154.3	146.5	154.1	258.6
	5th Gd:	155.4	156.6	158.1	158.4	157.9	261.1

EOG Mean Scale Scores for Three Years

		Reading			Mathematics		
		1999	2000	2001	1999	2000	2001
488	3rd Gd:	148.6	148.6	148.8	146.3	145.7	251.6
Lynn Road Elementary	4th Gd:	151.9	151.9	153.2	154.9	156.3	257.1
	5th Gd:	155.5	156.3	156.3	159.9	159.7	260.9
	<hr/>						
494	3rd Gd:			149.3			252.3
Middle Creek Elementary	4th Gd:			150.9			255.8
	5th Gd:			155.4			261.6
	<hr/>						
496	3rd Gd:	148.1	146.0	147.1	144.1	142.4	249.7
Millbrook Elementary	4th Gd:	151.3	151.6	150.5	151.4	151.3	252.5
	5th Gd:	155.9	157.1	157.0	157.8	162.3	259.6
	<hr/>						
504	3rd Gd:	154.6	155.0	154.8	152.8	154.3	258.5
Morrisville Elementary	4th Gd:	156.5	158.4	158.3	159.9	162.0	263.8
	5th Gd:	160.4	162.3	163.1	166.9	168.0	269.3
	<hr/>						
516	3rd Gd:	149.3	152.5	151.9	144.6	149.7	254.0
North Ridge Elementary	4th Gd:	152.3	152.5	156.1	155.1	156.3	259.3
	5th Gd:	156.5	158.6	159.2	160.6	162.4	262.7
	<hr/>						
520	3rd Gd:	150.8	150.9	152.0	148.3	148.4	255.1
Northwoods Elementary	4th Gd:	153.5	156.0	155.2	155.6	161.1	259.3
	5th Gd:	158.3	158.6	160.7	162.7	164.0	266.2
	<hr/>						
522	3rd Gd:	153.4	154.3	154.4	151.4	152.7	257.3
Oak Grove Elementary	4th Gd:	157.5	157.6	157.6	160.8	160.4	264.2
	5th Gd:	161.2	162.7	163.2	168.1	169.3	271.4
	<hr/>						
523	3rd Gd:	151.4	152.3	152.7	150.4	151.3	256.7
Olive Chapel Elementary	4th Gd:	153.8	154.4	157.2	155.8	156.5	262.3
	5th Gd:	157.6	159.6	160.4	161.8	163.6	264.7
	<hr/>						
524	3rd Gd:	148.1	149.9	147.8	142.7	149.8	250.3
Olds @ Cardinal Gibbons	4th Gd:	156.2	151.3	153.7	159.8	157.5	260.6
	5th Gd:	158.8	159.5	157.7	161.8	165.1	261.9
	<hr/>						
525	3rd Gd:		151.5	152.6		149.2	255.4
Partnership Elementary	4th Gd:			154.6			259.5
	5th Gd:						
	<hr/>						
530	3rd Gd:	148.2	149.9	150.7	145.5	148.0	254.2
Penny Road Elementary	4th Gd:	151.3	153.1	151.3	153.7	155.8	257.0
	5th Gd:	158.3	160.3	162.2	165.1	166.7	267.9
	<hr/>						
531	3rd Gd:	151.7	150.7	152.5	149.5	147.6	255.5
Pleasant Union Elementary	4th Gd:	156.8	155.9	156.2	158.3	156.6	260.1
	5th Gd:	159.5	161.1	160.2	162.3	162.5	261.8
	<hr/>						
532	3rd Gd:	145.8	149.9	150.7	140.5	146.3	253.4
Poe Elementary	4th Gd:	156.8	150.4	153.1	155.8	152.3	256.3
	5th Gd:		166.0	157.5		167.4	260.6
	<hr/>						

EOG Mean Scale Scores for Three Years

		Reading			Mathematics		
		1999	2000	2001	1999	2000	2001
536 Powell Elementary	3rd Gd:	147.0	145.1	146.8	143.8	141.1	250.1
	4th Gd:	153.4	153.9	150.1	156.6	156.8	253.7
	5th Gd:	157.9	158.0	159.0	164.5	164.9	265.2
540 Rand Road Elementary	3rd Gd:	145.5	146.1	145.5	143.2	144.0	249.5
	4th Gd:	148.5	148.4	150.2	151.2	148.5	254.8
	5th Gd:	153.5	153.6	155.0	158.4	156.7	258.4
542 Reedy Creek Elem.	3rd Gd:		150.2	149.6		146.0	252.5
	4th Gd:		153.1	152.9		156.4	258.1
	5th Gd:		159.1	159.3		163.2	262.6
544 Rolesville Elementary	3rd Gd:	143.8	146.5	146.4	139.6	142.1	250.1
	4th Gd:	148.9	149.3	150.2	151.1	151.6	254.5
	5th Gd:	154.0	155.6	156.8	156.0	158.8	258.5
548 Root Elementary	3rd Gd:	148.8	148.7	150.8	145.7	148.6	254.2
	4th Gd:	156.5	156.4	155.4	158.7	161.0	263.1
	5th Gd:	157.9	160.7	161.2	162.2	168.1	267.0
550 Salem Elementary	3rd Gd:			154.1			257.2
	4th Gd:			156.6			261.1
	5th Gd:			158.6			263.4
560 Smith Elementary	3rd Gd:	147.0	145.5	145.8	144.3	142.2	250.2
	4th Gd:	149.7	149.2	151.4	151.5	152.9	256.4
	5th Gd:	155.3	155.9	155.2	159.8	157.5	256.3
564 Stough Elementary	3rd Gd:	150.5	151.4	152.7	148.9	150.3	256.5
	4th Gd:	153.1	153.4	155.5	156.6	155.7	260.1
	5th Gd:	157.6	159.3	158.6	163.1	163.8	262.6
568 Swift Creek Elementary	3rd Gd:	147.4	149.0	149.0	142.9	146.0	252.7
	4th Gd:	151.8	153.3	150.6	154.0	156.5	255.0
	5th Gd:	157.0	158.7	158.1	159.7	161.7	260.4
570 Timber Drive Elementary	3rd Gd:	152.1	152.4	153.1	149.7	150.1	257.3
	4th Gd:	153.5	154.2	155.8	156.1	157.7	261.6
	5th Gd:	158.4	158.6	159.2	165.1	162.9	264.6
572 Underwood Elementary	3rd Gd:	146.9	143.6	146.4	141.8	137.5	250.7
	4th Gd:	152.2	151.3	149.6	152.3	153.0	253.8
	5th Gd:	156.2	159.0	158.2	163.4	163.1	264.6
576 Vance Elementary	3rd Gd:	147.2	148.2	148.0	143.0	145.9	252.2
	4th Gd:	150.7	149.6	151.4	155.8	154.1	257.5
	5th Gd:	152.9	156.6	156.3	157.9	161.8	260.8
580 Vandora Springs Elem.	3rd Gd:	145.6	149.3	149.6	142.0	148.2	254.0
	4th Gd:	148.6	151.0	154.7	152.2	155.2	260.4
	5th Gd:	153.1	155.5	157.7	159.3	159.8	261.1

EOG Mean Scale Scores for Three Years

		Reading			Mathematics		
		1999	2000	2001	1999	2000	2001
584	3rd Gd:	147.1	149.0	150.3	142.3	143.9	253.3
Wake Forest Elementary	4th Gd:	150.7	150.3	152.4	153.0	152.9	256.3
	5th Gd:	154.3	156.9	157.6	158.6	159.0	259.8
	<hr/>						
593	3rd Gd:		148.6	149.5		144.2	252.1
Wakefield Elem.	4th Gd:		153.3	154.7		156.3	258.2
	5th Gd:			158.8			264.6
	<hr/>						
596	3rd Gd:	148.4	149.8	151.0	143.6	146.5	255.4
Washington Elementary	4th Gd:	153.0	154.4	155.4	156.3	157.6	260.4
	5th Gd:	159.1	158.9	159.4	163.6	163.5	265.4
	<hr/>						
598	3rd Gd:	150.9	152.8	150.3	148.7	151.1	255.0
Weatherstone Elem.	4th Gd:	153.7	154.7	155.6	157.5	160.0	262.0
	5th Gd:	159.2	159.4	162.4	167.5	166.8	270.9
	<hr/>						
600	3rd Gd:	143.8	143.8	145.3	138.1	142.8	249.0
Wendell Elementary	4th Gd:	150.3	149.9	151.3	152.8	153.7	257.7
	5th Gd:	155.1	157.8	156.4	159.0	161.2	261.6
	<hr/>						
606	3rd Gd:	151.4	151.5	153.3	149.7	149.3	256.0
West Lake Elementary	4th Gd:	154.5	155.9	156.3	158.3	159.4	262.3
	5th Gd:	160.0	161.1	161.2	166.5	166.5	268.7
	<hr/>						
616	3rd Gd:	148.3	148.6	149.4	145.8	147.0	253.6
Wilburn Elementary	4th Gd:	151.9	151.2	151.5	155.8	154.2	255.8
	5th Gd:	155.3	158.6	157.8	160.9	164.2	261.9
	<hr/>						
618	3rd Gd:		148.1	147.2		142.9	250.1
Wildwood Forest Elem.	4th Gd:		150.4	152.9		154.3	257.6
	5th Gd:			158.0			262.2
	<hr/>						
620	3rd Gd:	148.6	149.2	149.1	146.0	146.4	252.0
Wiley Elementary	4th Gd:	153.9	154.9	153.4	159.8	161.1	260.3
	5th Gd:	157.5	162.7	160.0	161.9	166.8	264.0
	<hr/>						
624	3rd Gd:	147.7	149.2	150.0	141.3	146.7	255.4
Willow Springs Elem.	4th Gd:	149.8	150.8	152.6	152.7	151.7	257.3
	5th Gd:	157.1	156.9	157.8	163.8	163.6	263.2
	<hr/>						
626	3rd Gd:			147.8			250.8
Yates Mill Elementary	4th Gd:			154.4			260.7
	5th Gd:			157.5			262.5
	<hr/>						
628	3rd Gd:	150.5	150.2	148.9	147.5	149.4	252.7
York Elementary	4th Gd:	152.1	152.6	152.9	155.8	157.5	258.6
	5th Gd:	157.7	158.9	158.3	164.4	164.2	264.3
	<hr/>						
632	3rd Gd:	146.6	146.6	145.6	144.4	144.2	250.4
Zebulon Elementary	4th Gd:	149.1	149.5	151.2	154.6	154.6	256.7
	5th Gd:	156.2	154.4	154.2	161.9	160.5	258.6
	<hr/>						

EOG Mean Scale Scores for Three Years

		Reading			Mathematics		
		1999	2000	2001	1999	2000	2001
312	6th Gd:	159.8	160.9	161.7	168.2	170.3	268.1
Apex Middle	7th Gd:	162.5	163.4	165.9	173.4	175.4	273.9
	8th Gd:	164.9	165.3	166.9	177.8	180.0	275.4
	<hr/>						
356	6th Gd:	158.8	158.3	158.0	166.6	166.3	264.0
Carnage Middle	7th Gd:	161.6	161.4	160.8	172.6	174.0	268.4
	8th Gd:	164.1	164.2	165.0	176.7	176.8	274.0
	<hr/>						
360	6th Gd:	158.5	157.0	157.7	165.0	166.6	263.4
Carroll Middle	7th Gd:	163.0	162.8	161.2	173.9	173.7	266.9
	8th Gd:	164.9	165.7	164.9	177.8	178.9	271.1
	<hr/>						
370	6th Gd:			160.8			265.1
Centennial Middle	7th Gd:			160.2			266.6
	8th Gd:			163.0			269.3
	<hr/>						
388	6th Gd:	159.5	158.0	161.0	167.6	165.9	266.7
Daniels Middle	7th Gd:	161.5	162.8	162.0	173.1	173.9	268.8
	8th Gd:	165.3	164.3	166.4	177.6	177.4	273.7
	<hr/>						
391	6th Gd:	161.9	162.4	163.1	169.3	170.7	270.0
Davis Drive Middle	7th Gd:	163.8	164.2	164.6	175.7	177.3	273.7
	8th Gd:	167.5	166.5	167.3	180.6	182.0	277.0
	<hr/>						
394	6th Gd:		159.2	160.0		169.7	268.5
Dillard Middle	7th Gd:		163.9	162.6		179.0	271.0
	8th Gd:			168.2			277.5
	<hr/>						
399	6th Gd:	161.1	160.0	162.0	169.3	168.5	268.9
Durant Road Middle	7th Gd:	163.8	164.3	164.0	174.8	176.0	272.2
	8th Gd:	165.9	166.6	167.5	179.7	179.8	275.6
	<hr/>						
400	6th Gd:	159.8	159.1	159.3	168.1	168.9	266.1
East Cary Middle	7th Gd:	164.7	162.7	163.0	177.2	175.9	271.9
	8th Gd:	166.9	166.6	165.4	181.8	181.3	274.5
	<hr/>						
404	6th Gd:	155.3	153.1	155.4	161.0	160.2	259.8
East Garner Middle	7th Gd:	159.7	158.7	158.9	167.4	167.7	264.7
	8th Gd:	161.6	162.9	164.6	171.9	173.4	269.0
	<hr/>						
408	6th Gd:	158.0	155.8	157.4	162.1	162.6	262.8
East Millbrook Middle	7th Gd:	160.5	160.5	160.4	169.2	169.4	266.7
	8th Gd:	161.7	163.3	163.3	169.9	173.0	267.6
	<hr/>						
410	6th Gd:	155.3	155.6	155.6	162.3	163.9	260.0
East Wake Middle	7th Gd:	160.6	158.9	159.2	170.9	167.7	265.4
	8th Gd:	161.5	162.3	161.1	171.8	173.8	267.1
	<hr/>						
424	6th Gd:	156.5	157.9	156.7	164.9	166.4	264.5
Fuquay-Varina Middle	7th Gd:	160.5	161.1	162.3	170.4	170.2	267.6
	8th Gd:	162.3	162.7	163.7	173.7	174.6	270.2
	<hr/>						
471	6th Gd:	159.8	159.8	160.6	167.2	168.8	266.8
Leesville Road Middle	7th Gd:	164.9	163.3	164.5	176.6	176.9	273.6
	8th Gd:	166.6	168.0	167.6	179.0	182.7	277.5
	<hr/>						

EOG Mean Scale Scores for Three Years

		Reading			Mathematics		
		1999	2000	2001	1999	2000	2001
472	6th Gd:	163.4	163.4	164.2	173.1	174.6	273.4
Ligon Middle	7th Gd:	163.7	166.3	166.5	177.0	180.3	278.2
	8th Gd:	165.7	166.3	169.3	180.1	180.9	280.2
484	6th Gd:		163.1	163.6		171.9	269.5
Lufkin Rd. Middle	7th Gd:			165.8			276.3
	8th Gd:						
492	6th Gd:	161.6	160.9	161.5	171.6	172.4	269.0
Martin Middle	7th Gd:	164.1	163.1	164.1	176.8	177.4	274.6
	8th Gd:	166.9	166.6	167.0	181.9	181.4	275.9
512	6th Gd:	154.2	153.8	154.3	159.1	162.5	259.9
North Garner Middle	7th Gd:	158.8	157.4	157.9	171.2	169.5	267.1
	8th Gd:	161.7	161.7	161.3	173.9	174.8	267.3
592	6th Gd:	158.6	157.1	156.5	164.0	165.5	261.9
Wake Forest-Rolesville Mid.	7th Gd:	161.7	162.4	160.6	171.6	172.1	266.2
	8th Gd:	162.5	164.7	164.9	174.8	177.9	272.3
594	6th Gd:			161.7			268.1
Wakefield Middle	7th Gd:			163.3			271.8
	8th Gd:						
604	6th Gd:	161.1	159.4	160.8	170.0	170.5	267.4
West Cary Middle	7th Gd:	163.5	163.5	164.0	174.8	174.5	272.0
	8th Gd:	165.2	166.2	166.9	176.8	179.8	274.9
607	6th Gd:	161.9	162.4	162.9	171.6	171.8	269.8
West Lake Middle	7th Gd:	165.0	164.9	165.1	177.4	178.4	272.9
	8th Gd:	167.5	167.6	168.2	183.7	183.3	277.7
608	6th Gd:	159.1	159.9	161.5	165.1	166.4	266.7
West Millbrook Middle	7th Gd:	161.3	163.1	163.7	171.9	174.2	271.7
	8th Gd:	166.1	163.6	167.1	179.6	176.3	274.6
636	6th Gd:	155.9	154.9	155.9	162.3	161.3	262.0
Zebulon Middle	7th Gd:	159.2	159.5	160.0	171.6	171.5	265.4
	8th Gd:	160.7	161.8	163.1	172.7	174.2	270.7