

***WAKE COUNTY PUBLIC SCHOOL SYSTEM
BID ADDENDUM***

THIS BID ADDENDUM DOES NOT HAVE TO BE RETURNED

Bid Number: 251-26-065

Description: Cleaning Services - Warehouse

Opening Date/Time: October 24, 2025 @ 1:00 pm EST

**Addendum Number: 01
Addendum Date: 10/17/2025**

INSTRUCTIONS: The RFP referenced above shall be updated as follows:

ATTACHMENTS:

- 1) Attachment 1: WCPSS Response to Vendor Questions
- 2) Attachment 2: Replace the Cost/Price Proposal Section
- 3) Attachment 3: Warehouse Floor Plan

Questions for RFP #251-26-065 – Cleaning Services - Warehouse

#	Reference	Vendor Question	Answers
1	Page 6, Cost/Price Proposal	Is it possible to change the pricing ask, to one price for the initial deep clean and then a monthly or quarterly price going forward?	See attached Cost/Price Proposal
2	Page 4, Cleaning Frequency	Is there a time frame that each cleaning needs to be completed within?	Within the months of January, April, July, October
3	Page 4, Background and Project Objectives	Could WCPSS please provide the historical annual budget or spending amount allocated for these warehouse cleaning services? This information is crucial for preparing a competitive and realistic proposal.	No spending or budget allocation information available
4	General	Are you open to sharing the warehouse floor plan to aid work planning? It will be useful in producing good quality proposals.	See attached

WITH THE POSTING OF THIS ADDENDUM, THIS RFP WILL BEGIN A “QUIET PERIOD UNTIL IT IS OPENED”

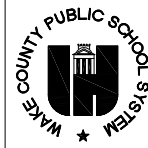
NO NEW QUESTIONS CAN BE ANSWERED

Cost/Price Proposal

Item #	Description	Cost/Price
1	Initial Deep Cleaning, as specified in the scope of work above (November or December 2025)	\$_____/Each (one-time)
2	Quarterly Cleanings, as specified in the scope of work above (Beginning January 2026)	\$_____/Cost Per Quarterly Cleaning (Recurring)
	TOTAL COST: Include the initial and (2) quarterly cleanings for 2026 January & April only	\$_____/Annual

NC ELECTRONIC VENDOR PORTAL

The North Carolina electronic Vendor Portal (eVP) is the State of North Carolina's system to connect vendors with state government organizations that purchase goods and services. eVP provides a self-service portal where vendors can register and participate in electronic procurement activities. Please register here: <https://evp.nc.gov/> to receive bid notification and electronic procurement opportunities from Wake County Public Schools.



FACILITY PLANNING
1551 Rock Quarry Road
Raleigh, North Carolina
27610

Date Drawn: MAY, 2005

Drawn by: CADD GRAPHICS

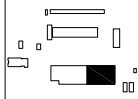
Checked by:

Approved by:

8	1/19	CADD	FACILITY NAME CHANGE
7	12/17	CADD	ROOM RENOVATIONS
6	1/08	CADD	ROOM NO. UPDATES
5	9/07	CADD	BLDG. # REMOVED
4	11/06	CADD	ADDED CONST. HISTORY
3	10/06	CADD	REVISED KEY PLAN
2	1/06	CADD	BUILDING 'U' UPDATED
1	5/05	CADD	ADDED TO CAP
0	1989	NEW	

Rev Date By Revision

Key Plan:



School Name and Address:

WAKE COUNTY PUBLIC SCHOOL SYSTEM
ROCK QUARRY ROAD COMPLEX

1551 Rock Quarry Road
Raleigh, North Carolina
27610

Unit Number:

920-980

Scale:

1/16" = 1'-0"

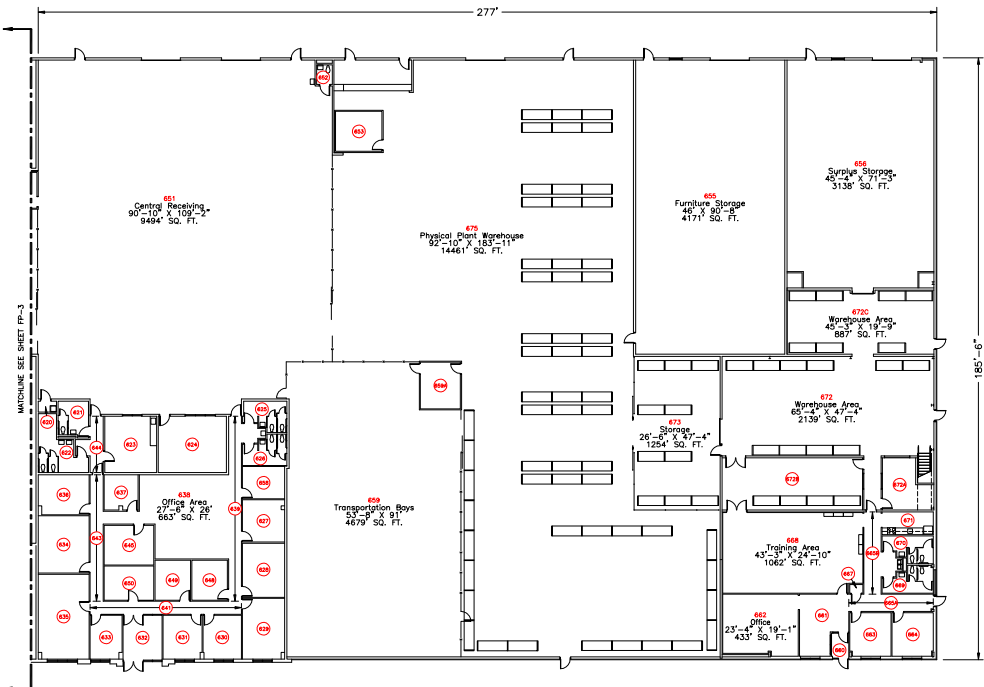


Sheet:

FLOOR PLAN

FP4

Sheet: 5 of 7 Revision: 8

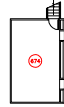


BUILDING F (1ST FLOOR)

Room dimensions are maximum lengths. These dimensions may not equal total net square footage.

YEAR	DESCRIPTION	NET	GROSS	CONSTRUCTION
2017	WAREHOUSE	49833 SQ. FT.	51863 SQ. FT.	NEW
2017	WAREHOUSE	49833 SQ. FT.	51863 SQ. FT.	REN

TO RM 672



BUILDING F (1ST FLOOR MEZZANINE)

Room dimensions are maximum lengths. These dimensions may not equal total net square footage.

ROOM #	ROOM NAME	ROOM DIMENSION	SQUARE FEET
674	Mechanical	14'-10" X 25'-4"	376

YEAR	DESCRIPTION	NET	GROSS	CONSTRUCTION
1988	WAREHOUSE	0 SQ. FT.	0 SQ. FT.	NEW

ROOM #	ROOM NAME	ROOM DIMENSION	SQUARE FEET
620	Custodial Closet	5'-8" X 3'-4"	19
621	Women	9'-4" X 11'-4"	100
622	Men	15'-6" X 18'-2"	178
623	Break Room	16' X 17'-4"	277
624	Central Receiving	21' X 17'-4"	364
625	Men	13'-4" X 9'-8"	110
626	Women	13'-8" X 6'-7"	112
627	Asst. Warehouse Manager Office	13' X 13'	168
628	Warehouse Manager Office	13' X 16'-8"	217
629	Purcose Officer	13' X 18'-9"	242
630	Office	11'-10" X 13'-6"	159
631	Office	12' X 13'-6"	161
632	Vestibule	12' X 13'-9"	165
633	Reception	9'-10" X 13'-6"	131
634	Office	15'-8" X 17'-8"	277
635	Conference Room	15'-8" X 26'-2"	408
636	Work Room	15'-8" X 12'-4"	190
637	Storage	10'-6" X 10'-11"	113
638	Office Area	27'-6" X 26'	663
639	Corridor	11'-6" X 57'	265
641	Corridor	46'-8" X 4'	187
643	Corridor	15'-2" X 39'	201
644	Corridor	8'-6" X 17'-4"	92
645	Storage	15'-4" X 12'-3"	188
648	Office	11' X 12'-4"	136
649	Office	11' X 12'-4"	136
650	Records Room	15'-4" X 10'-6"	161
651	Central Receiving	90'-10" X 109'-2"	9494
652	Toilet	4'-10" X 6'	29
653	Office	14'-4" X 12'-4"	177
655	Furniture Storage	46' X 90'-8"	4171
656	Surplus Storage	45'-4" X 71'-3"	3138
658	Storage	13' X 9'-11"	129
659	Transportation Bays	53'-8" X 91'	4679
659A	Office	12'-4" X 14'-4"	177
660	Vestibule	5'-4" X 7'-8"	41
661	Reception	15'-2" X 19'-1"	247
662	Office	23'-4" X 19'-1"	433
663	Office	12'-8" X 13'-5"	169
664	Office	12'-8" X 13'-5"	170
665A	Corridor	28'-1" X 5'-4"	139
665B	Corridor	11'-10" X 25'-4"	178
667	Storage	4' X 2'-8"	11
668	Training Area	43'-3" X 24'-10"	1062
669	Women	15'-9" X 8'-7"	109
670	Men	15'-9" X 8'-7"	110
671	Break Room	15'-9" X 7'	110
672	Warehouse Area	65'-4" X 47'-4"	2139
672A	Office	15'-10" X 16'	207
672B	Scanning Area	43'-3" X 16'	692
672C	Warehouse Area	45'-3" X 19'-9"	887
673	Storage	26'-6" X 47'-4"	1254
675	Physical Plant Warehouse	92'-10" X 183'-11"	14461

BUILDING H (DEMOLISHED)

YEAR	DESCRIPTION	NET	GROSS	CONSTRUCTION
1988	GREENHOUSE	1096 SQ. FT.	1096 SQ. FT.	NEW
2006	GREENHOUSE	1096 SQ. FT.	1096 SQ. FT.	DEM



FACILITY PLANNING
1551 Rock Quarry Road
Raleigh, North Carolina
27610

Date Drawn: MAY, 2005

Drawn by: CADD GRAPHICS

Checked by:

Approved by:

Rev	Date	By	Revision
8	5/22	CADD	REVISED ROOM NUMBERS
7	1/19	CADD	FACILITY NAME CHANGE
6	6/14	CADD	PROGRAM SPACE CHANGES
5	11/12	CADD	ADDITION TO BLDG. F
4	11/06	CADD	ADDED CONST. HISTORY
3	10/06	CADD	REVISED KEY PLAN
2	1/06	CADD	BUILDING 'D' UPDATED
1	5/05	CADD	ADDED TO CADD
0	1989		NEW

Key Plan:

School Name and Address:
**WAKE COUNTY
PUBLIC SCHOOLS
SYSTEM
ROCK QUARRY
ROAD
COMPLEX**

1551 Rock Quarry Road
Raleigh, North Carolina
27610

Unit Number:
920-980

Scale:
1/16" = 1'-0"
0 16 32

Sheet:
FLOOR PLAN

FP3

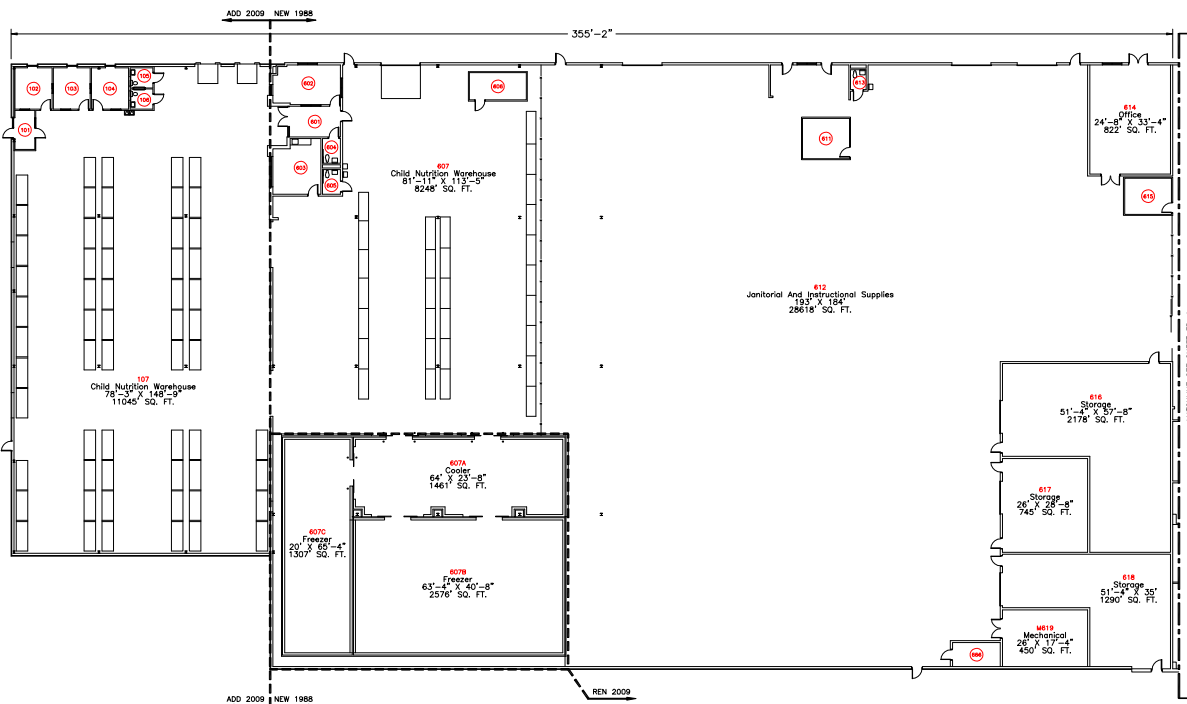
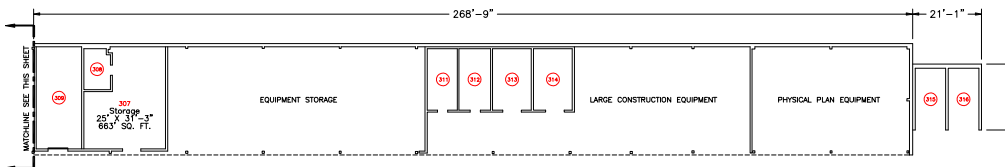
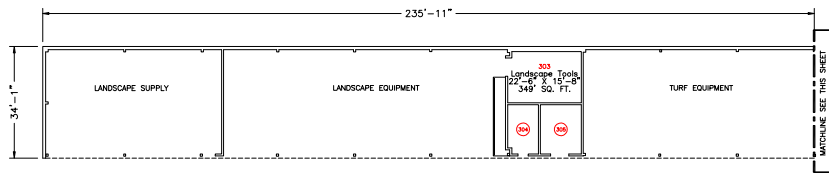
Sheet: 4 of 7
Revision: 8

BUILDING C (1ST FLOOR)

Room dimensions are maximum lengths.
These dimensions may not equal total
net square footage.

ROOM #	ROOM NAME	ROOM DIMENSION	SQUARE FEET
303	Landscape Tools	22'-6" X 15'-6"	349
304	Chemical Storage	9'-5" X 15'	138
305	Chemical Storage	12'-6" X 15'	186
307	Storage	25' X 31'-3"	663
308	Storage	8'-2" X 12'-6"	99
309	Storage	13'-11" X 31'-3"	434
311	Storage	9'-3" X 18'-9"	173
312	Storage	9'-8" X 18'-9"	181
313	Storage	11'-11" X 18'-9"	223
314	Storage	11'-11" X 18'-9"	223
315	Storage	9'-8" X 18'-11"	177
316	Storage	9'-4" X 18'-11"	177

YEAR	DESCRIPTION	NET	GROSS	CONSTRUCTION
1988	STORAGE	3025 SQ. FT.	3486 SQ. FT.	NEW



BUILDING F (1ST FLOOR)

Room dimensions are maximum lengths.
These dimensions may not equal total
net square footage.

YEAR	DESCRIPTION	NET	GROSS	CONSTRUCTION
1988	WAREHOUSE	49012 SQ. FT.	51155 SQ. FT.	NEW
2009	WAREHOUSE	5344 SQ. FT.	6394 SQ. FT.	REN
2009	WAREHOUSE	11635 SQ. FT.	11967 SQ. FT.	ADD
	TOTALS	60647 SQ. FT.	63121 SQ. FT.	

ROOM #	ROOM NAME	ROOM DIMENSION	SQUARE FEET
101	Entry	6' X 12'	72
102	Office	11'-4" X 12'-8"	144
103	Office	11'-4" X 12'-8"	144
104	Office	11'-4" X 12'-8"	144
105	Toilet	7' X 6'-2"	43
106	Toilet	7' X 6'-2"	43
107	Child Nutrition Warehouse	78'-3" X 148'-9"	11045
601	Lobby	15'-7" X 9'-4"	145
602	Office	20'-8" X 12'-2"	243
603	Break Room	14'-8" X 17'	232
604	Toilet	5'-6" X 7'-6"	41
605	Toilet	5'-6" X 7'-6"	41
606	Storage	17'-4" X 8'-4"	144
607	Child Nutrition Warehouse	81'-11" X 113'-5"	8248
607A	Cooler	64' X 23'-8"	1461
607B	Freezer	63'-4" X 40'-8"	2576
607C	Freezer	20' X 65'-4"	1307
611	Office	14'-4" X 12'-4"	177
612	Janitorial And Instructional Supplies	193' X 184'	28618
613	Toilet	4'-10" X 6'	29
614	Office	24'-8" X 33'-4"	822
615	Office	14'-4" X 11'	158
616	Storage	51'-4" X 57'-8"	2178
617	Storage	26' X 28'-8"	745
618	Storage	51'-4" X 35'	1280
666	Electrical	14'-8" X 7'-4"	107
M619	Mechanical	26' X 17'-4"	450