

SOUND WALL YET TO BE DETERMINED. ASSIGNED LENGTH 600' ASSIGNED HEIGHT 10'

SITE PLAN

SCOTT'S RIDGE ELEMENTARY SCHOOL (E32)
 WAKE COUNTY PUBLIC SCHOOL SYSTEM
 APEX, NC



Small Kane Webster Conley Architects, PA
 1000 North Pointe Blvd, Suite 100
 Raleigh, NC 27601
 T: 919.833.9999 F: 919.833.2985
 www.skwc.com

1 AUGUST 2013



CONCEPT PERSPECTIVE VIEW

SCOTTS RIDGE ELEMENTARY SCHOOL (E32)

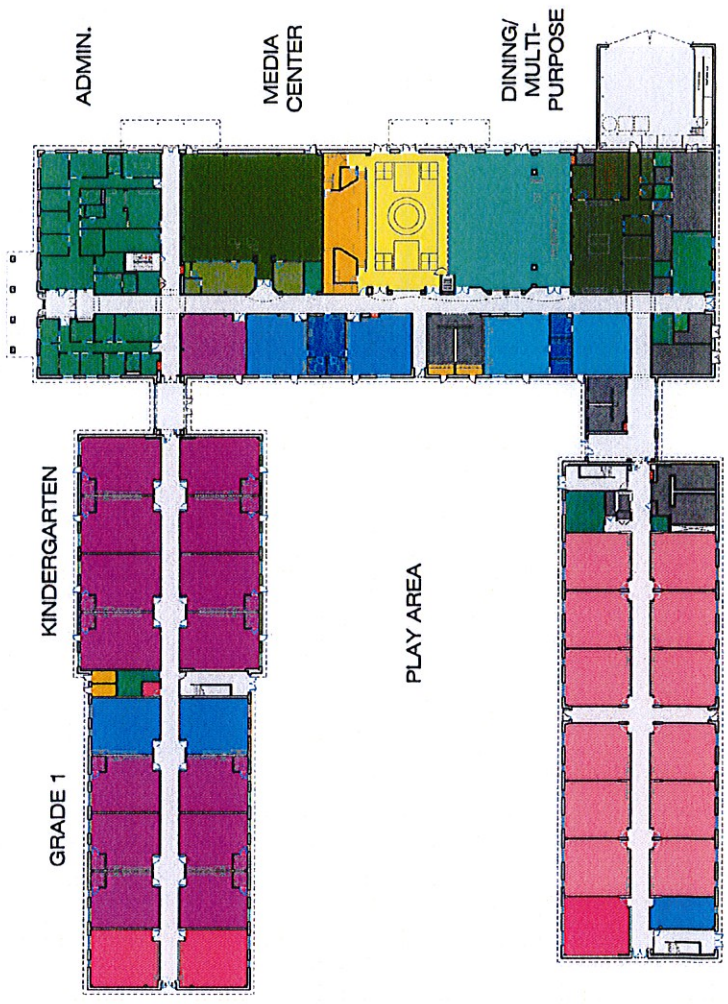
WAKE COUNTY PUBLIC SCHOOL SYSTEM
APEX, NC



Small Kane Webster Conley Architects, PA
10000 Parkside Lane, Suite 100
Raleigh, NC 27617
Tel: 919.853.1994 Fax: 919.852.2900
ARCHITECTURE PLANNING INTERIOR DESIGN

1 AUGUST 2013

- GRADES 2-5
- GRADES K-1
- GENERAL EDUCATION
- ADMINISTRATION
- COMPUTER
- INSTRUCTIONAL
- SELF-CONTAINED
- STAFF TOILET
- STAGE/STORAGE
- MULTI-PURPOSE
- DINING
- KITCHEN
- MEDIA CENTER
- MEDIA OFFICE
- ART/MUSIC
- ART/MUSIC STORAGE
- CIRCULATION
- CORE



FIRST FLOOR PLAN

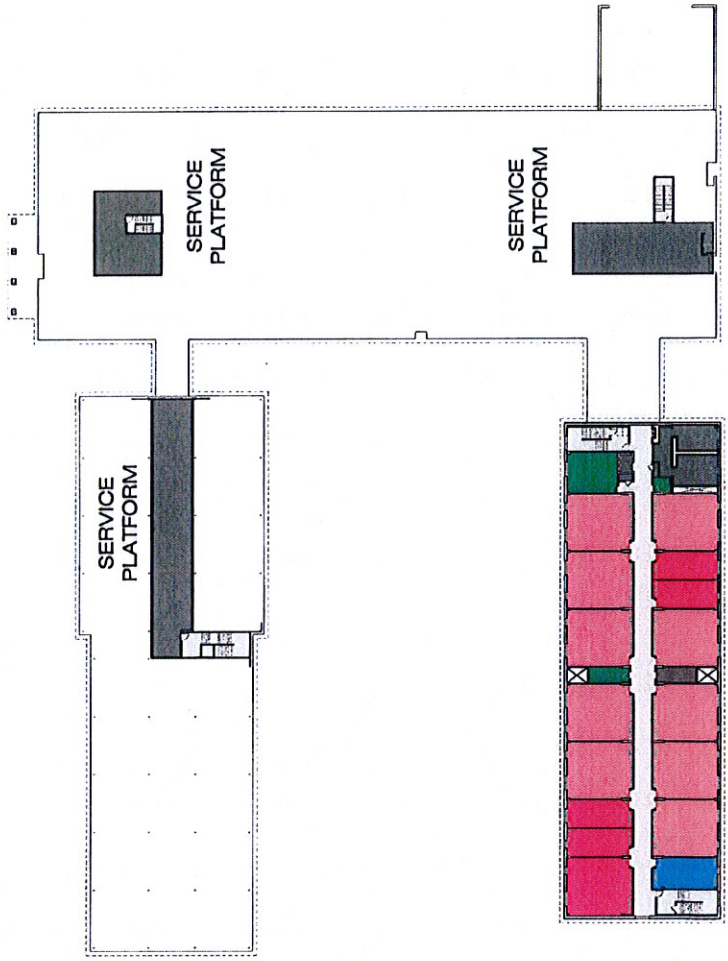
SCOTTS RIDGE ELEMENTARY SCHOOL (E32)
 WAKE COUNTY PUBLIC SCHOOL SYSTEM
 APEX, NC



Small Kane Webster Conley Architects, PA
 2400 Westwood Drive, Suite 100
 Raleigh, NC 27604
 T: 919.833.1996 F: 919.833.2950
 ARCHITECTURE PLANNING INTERIOR DESIGN

1 AUGUST 2013

- GRADES 2-5
- GRADES K-1
- GENERAL EDUCATION
- ADMINISTRATION
- COMPUTER
- INSTRUCTIONAL
- SELF-CONTAINED
- STAFF TOILET
- STAGE STORAGE
- MULTI-PURPOSE
- DRINKS
- KITCHEN
- MEDIA CENTER
- MEDIA OFFICE
- ART/MUSIC
- ART/MUSIC STORAGE
- CIRCULATION
- CORE



GRADE 4 & 5

SECOND FLOOR PLAN

SCOTTS RIDGE ELEMENTARY SCHOOL (E32)
 WAKE COUNTY PUBLIC SCHOOL SYSTEM
 APEX, NC



Small Kane Webster Conley Architects, PA
 3140 Old Wake Forest Road, Suite 100
 Raleigh, NC 27607
 Tel: 919.833.7094 Fax: 919.833.2003
 ARCHITECTURE PLANNING INTERIOR DESIGN

1 AUGUST 2013