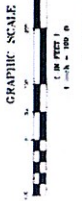


EXISTING  
NORTH WAKE  
LANDFILL



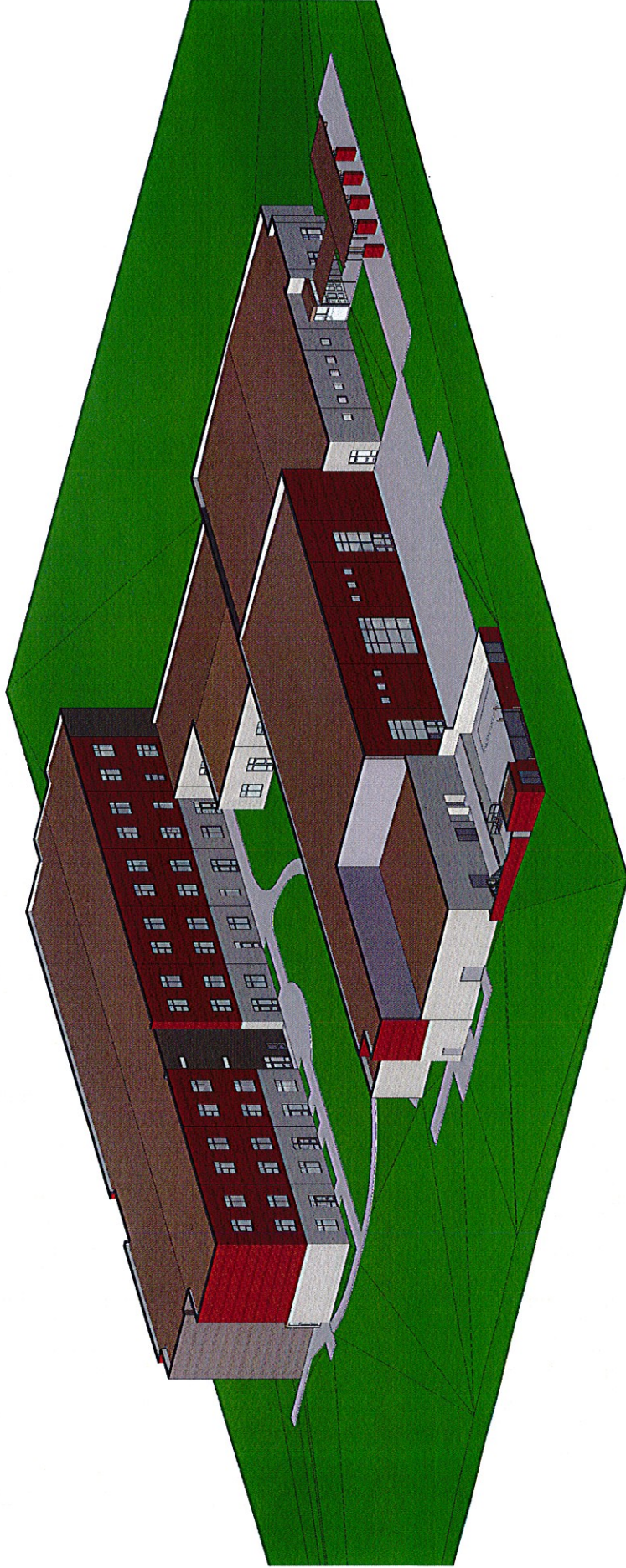
OVERALL SITE PLAN

Wake County Public School System  
E-20 Abbotts Creek Elementary School

INTERSECTION OF DURANT ROAD & FUTURE DUNN ROAD  
RALEIGH, NC 27614



**CLARK NEXSEN**  
Architecture & Engineering  
333 FAYETTEVILLE STREET  
RALEIGH, NC 27601  
919.336.8191 FAX 919.336.1794



Wake County Public School System  
E-20 Abbotts Creek Elementary School  
INTERSECTION OF FURBANT ROAD & FUTURE DUNN ROAD  
RALEIGH, NC 27614

Prospective View - 24x36

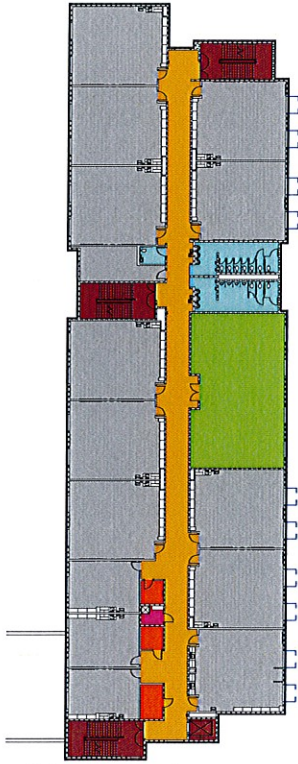
**CLARK • NEXSEN**  
*Architecture & Engineering*  
333 PARNETTVILLE STREET  
RALEIGH, NC 27601  
919.886.9251 FAX 919.886.1751



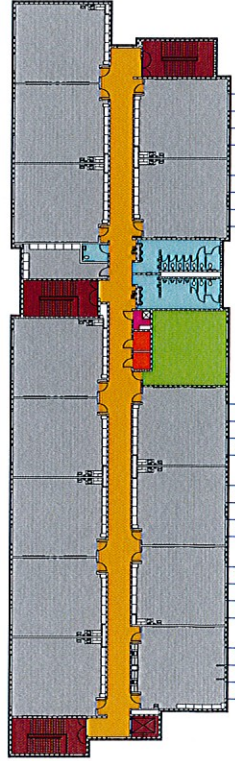
Ground Floor Plan - 24x36

Wake County Public School System  
 E-20 Abbotts Creek Elementary School  
 INTERSECTION OF DURANT ROAD & FUTURE DUNKIN ROAD  
 RALEIGH, NC 27614

**CLARK • NEXSEN**  
 Architecture & Engineering  
 333 FAYETTEVILLE STREET  
 RALEIGH, NC 27601  
 919.883.8751 FAX 919.836.1751



SECOND FLOOR PLAN - SECOND & THIRD GRADES

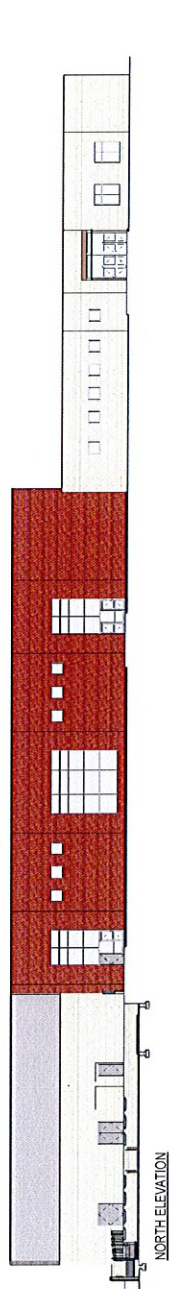


THIRD FLOOR PLAN - FOURTH & FIFTH GRADES

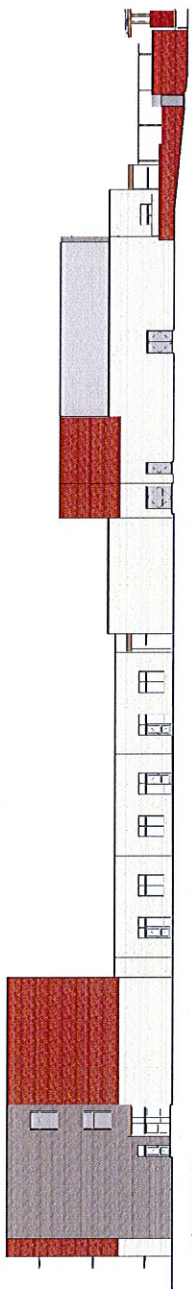
Wake County Public School System  
 E-20 Abbotts Creek Elementary School  
 INTERSECTION OF DURANT ROAD & FUTURE DUNN ROAD  
 RALEIGH, NC 27614

2nd 3rd Floor Plans - 24x36

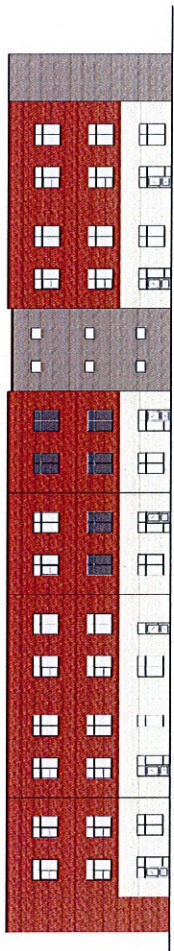
**CLARK • NEXSEN**  
 Architecture & Engineering  
 330 FAYETTEVILLE STREET  
 RALEIGH, NC 27601  
 919.996.9700 FAX 919.996.1751



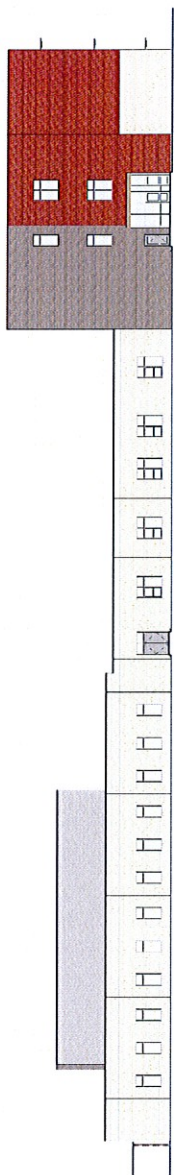
NORTH ELEVATION



EAST ELEVATION



SOUTH ELEVATION



WEST ELEVATION

Wake County Public School System  
 E-20 Abbotts Creek Elementary School

INTERSECTION OF DURANT ROAD & FUTURE DUNN ROAD  
 RALEIGH, NC 27614