

PROPOSED 2013-14 STUDENT ASSIGNMENT PLAN

Integrating the best practices and strategies of the former base assignment plan and the current choice assignment plan.

September 29, 2012



WAKE COUNTY
PUBLIC SCHOOL SYSTEM

Building a Base Assignment Plan

Considerations from the Board Directive:

- School building capacity
 - Stayed within the target seat capacity established on the choice plan
 - Created capacity for traditional calendar choice where it was lacking in some areas
 - Overfilled year-round schools in expectation of traditional choice
 - Assigned from west to east to fill available capacity in some areas
- Subdivision, neighborhood, and ITRE planning regions
 - Used major roads to create polygons
- Anticipated growth
 - OREd ITRE projections
 - Historical student enrollment data

Building a Base Assignment Plan

Considerations from the Board Directive:

- Proximity
 - Began with elementary assignments to their closest school and worked from there to meet the school building capacities
- Student achievement
 - Highest concentration of lower performing students – see county-map
 - Area of the county where we did not have the capacity to seat all students in their most proximate schools
 - Focused on the Group 1 magnet crescent ITB and NE corner outside ITB
- Stability
 - Proposed that everyone can grandfather with their current level of district transportation
 - Proposed that all promised feeder patterns under the choice assignment plan will be honored; no district transportation promised
 - Incorporated most of the feeder assignments from the choice plan as the base middle or high school
 - Tied students current assignments to the proposed assignments to the extent possible

Percent of Students By Node of Residence: 2009-10 School Year

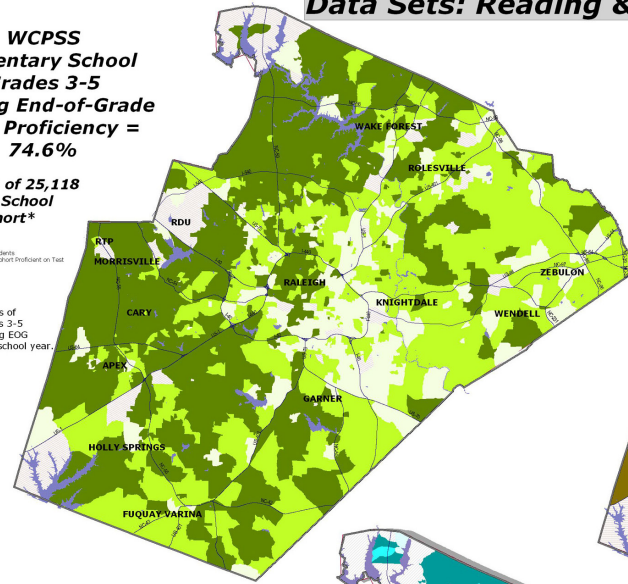
Data Sets: Reading & English I Proficiency, and On-Time Graduation Rates

**WCPSS
Elementary School
Grades 3-5
Reading End-of-Grade
(EOG) Proficiency =
74.6%**

**Distribution of 25,118
Elementary School
Student Cohort***

Legend
Nodes Without Cohort Students
Percent of Elementary School Cohort Proficient on Test
Less than 50%
Between 50% and 60%
Greater than 60%

*Each cohort consists of all students in grades 3-5 who took the Reading EOG during the 2009-10 school year.

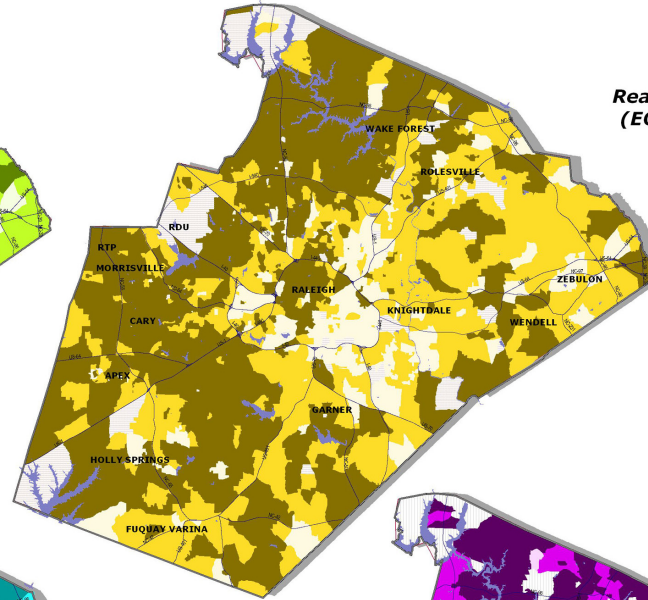


**WCPSS
Middle School
Grades 6-8
Reading End-of-Grade
(EOG) Proficiency =
75.6%**

**Distribution of 23,715
Middle School
Student Cohort***

Legend
Middle School Cohort Proficient on Test
Less than 50%
50-60%
More than 60%

*Each cohort consists of all students in Grades 6-8 who took the Reading EOG during the 2009-10 school year.

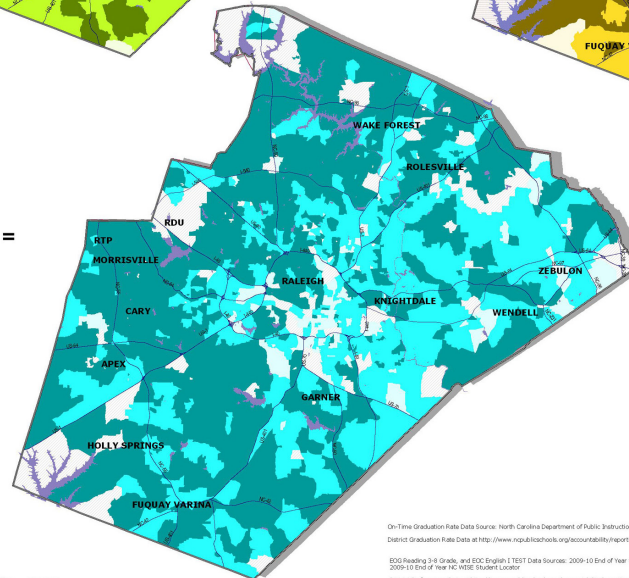


**WCPSS
High School
9th Grade
English I
End-of-Course
(EOC) Proficiency =
85.2%**

**Distribution of 9,175
Ninth Grade
Student Cohort***

Legend
Nodes Without Cohort Students
Percent of 9th Grade Student Cohort Proficient on Test
Less than 50%
Between 50% and 60%
Greater than 60%

*The cohort consists of all students in Grade 9 who took the English I EOC during the 2009-10 school year.

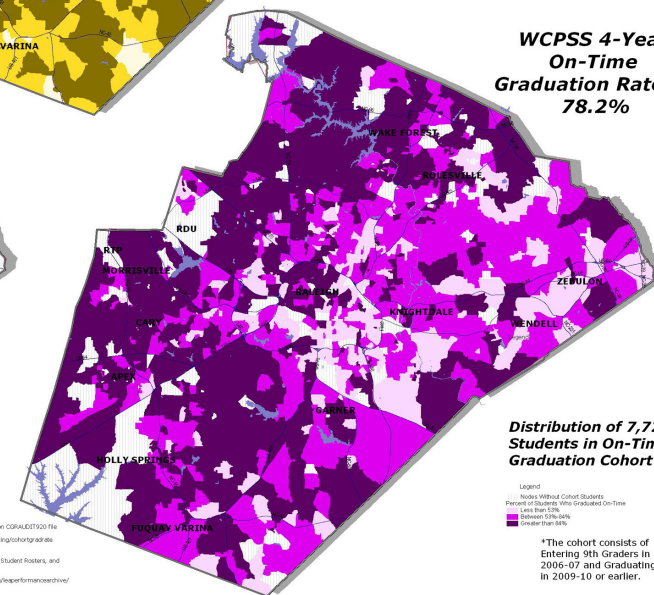


**WCPSS 4-Year
On-Time
Graduation Rate =
78.2%**

**Distribution of 7,720
Students in On-Time
Graduation Cohort***

Legend
Nodes Without Cohort Students
Percent of Students Who Graduated On-Time
Less than 50%
Between 50% and 60%
Greater than 60%

*The cohort consists of Entering 9th Graders in 2006-07 and Graduating in 2009-10 or earlier.



On-Time Graduation Rate Data Source: North Carolina Department of Public Instruction (DPI) AEDT100 File
District Graduation Rate Data at <http://www.ncpublicschools.org/accountability/reporting/graduationrate>
EOG Reading 3-5 Grade, and EOC English I 9th Data Sources: 2009-10 End of Year Student Rosters, and 2009-10 End of Year WCPSS Student Location
District Performance Data at <http://www.ncpublicschools.org/accountability/reporting/districtperformance/>



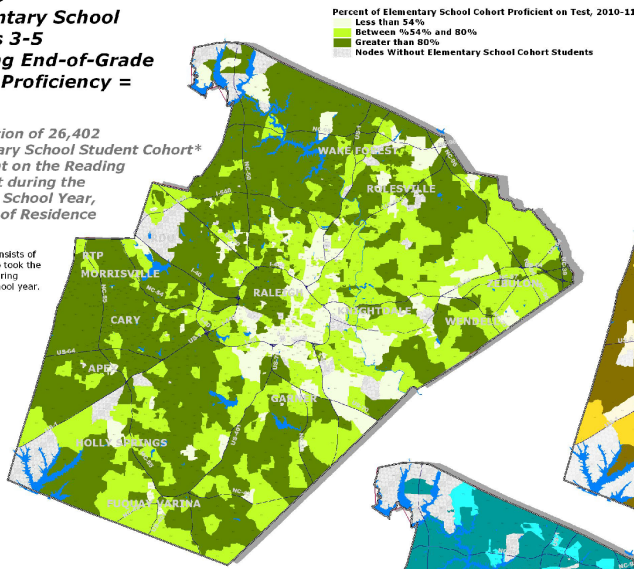
Percent of Students By Node of Residence: 2010-11 School Year

Data Sets: Reading and English I Proficiency, and On-Time Graduation Rates

WCPSS Elementary School Grades 3-5 Reading End-of-Grade (EOG) Proficiency = 76.3%

Distribution of 26,402
Elementary School Student Cohort*
Proficient on the Reading
EOG Test during the
2010-11 School Year,
by Node of Residence

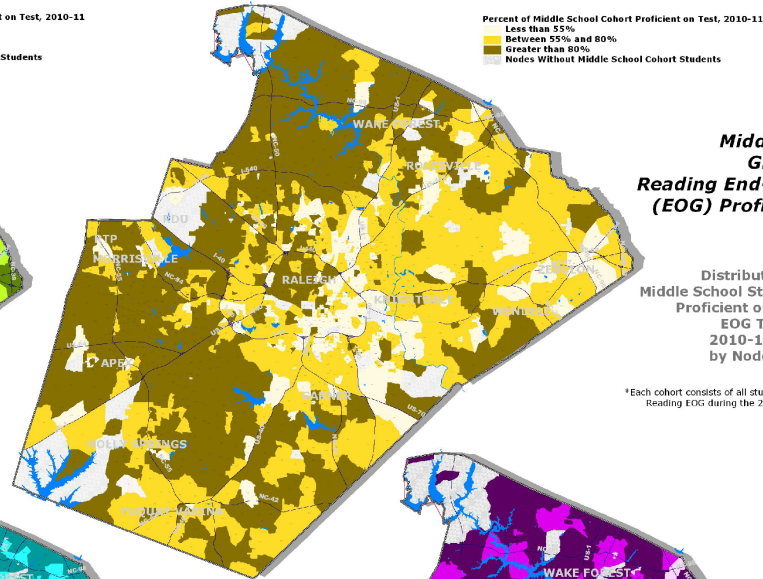
*Each cohort consists of
all students who took the
Reading EOG during
the 2010-11 school year.



WCPSS Middle School Grades 6-8 Reading End-of-Grade (EOG) Proficiency = 76.1%

Distribution of 24,760
Middle School Student Cohort*
Proficient on the Reading
EOG Test during the
2010-11 School Year,
by Node of Residence

*Each cohort consists of all students who took the
Reading EOG during the 2010-11 school year.



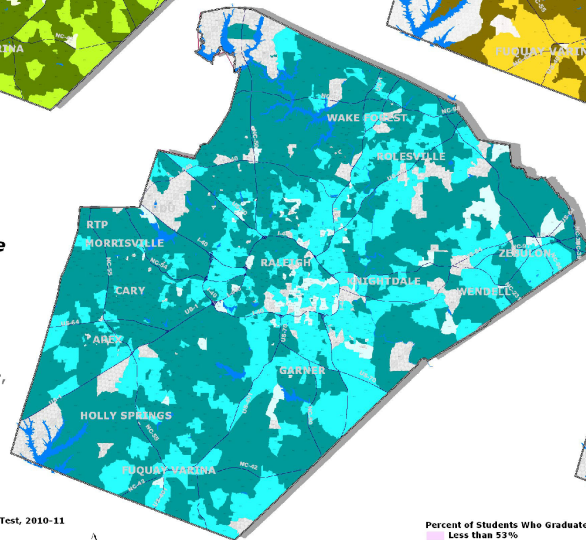
WCPSS High School 9th Grade English I End-of-Course (EOC) Proficiency = 85.6%

Distribution of 9,466
Ninth Grade Student Cohort*
Proficient on the English I EOC
During the 2010-11 School Year,
by Node of Residence

*The cohort consists of all students who took the
English I EOC during the 2010-11 school year.

Percent of 9th Grade Student Cohort Proficient on Test, 2010-11

- Less than 53%
- Between 53% - 86%
- Greater than 86%
- Nodes Without High School 9th Grade Cohort Students



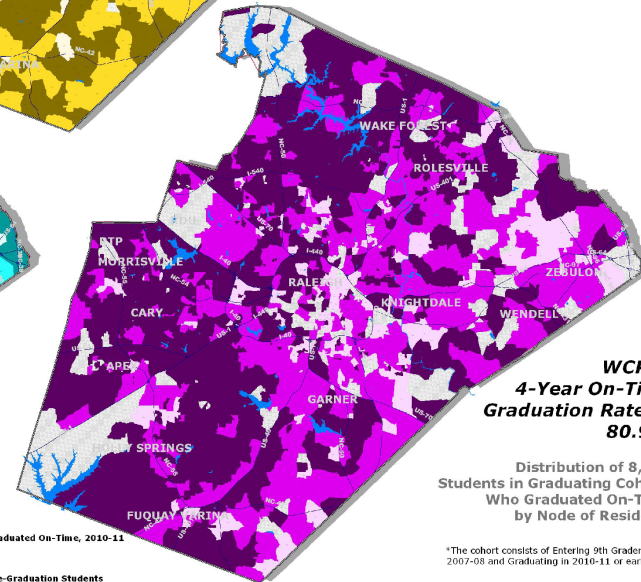
WCPSS 4-Year On-Time Graduation Rate = 80.9%

Distribution of 8,439
Students in Graduating Cohort*
Who Graduated On-Time,
by Node of Residence

*The cohort consists of Entering 9th Graders in
2007-08 and Graduating in 2010-11 or earlier.

Percent of Students Who Graduated On-Time, 2010-11

- Less than 53%
- Between 53%-84%
- Greater than 84%
- Nodes Without On-Time-Graduation Students



WAKE COUNTY PUBLIC SCHOOL SYSTEM



**WAKE COUNTY
PUBLIC SCHOOL SYSTEM**

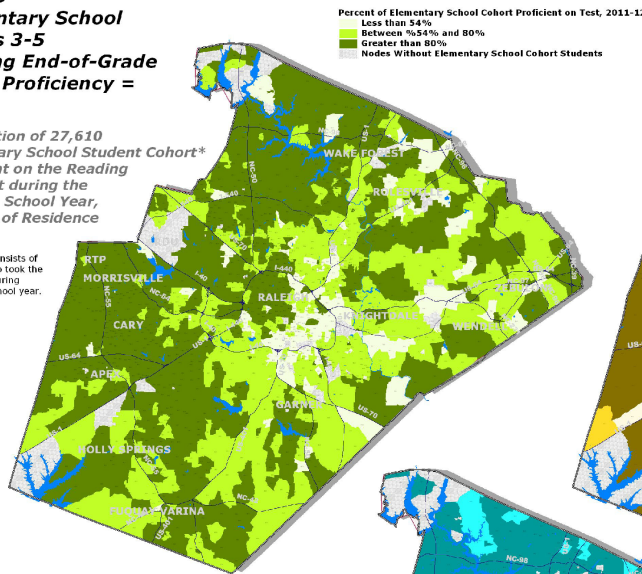
Percent of Students By Node of Residence: 2011-12 School Year

Data Sets: Reading and English I Proficiency, and On-Time Graduation Rates

WCPSS Elementary School Grades 3-5 Reading End-of-Grade (EOG) Proficiency = 77.9%

Distribution of 27,610
Elementary School Student Cohort*
Proficient on the Reading
EOG Test during the
2011-12 School Year,
by Node of Residence

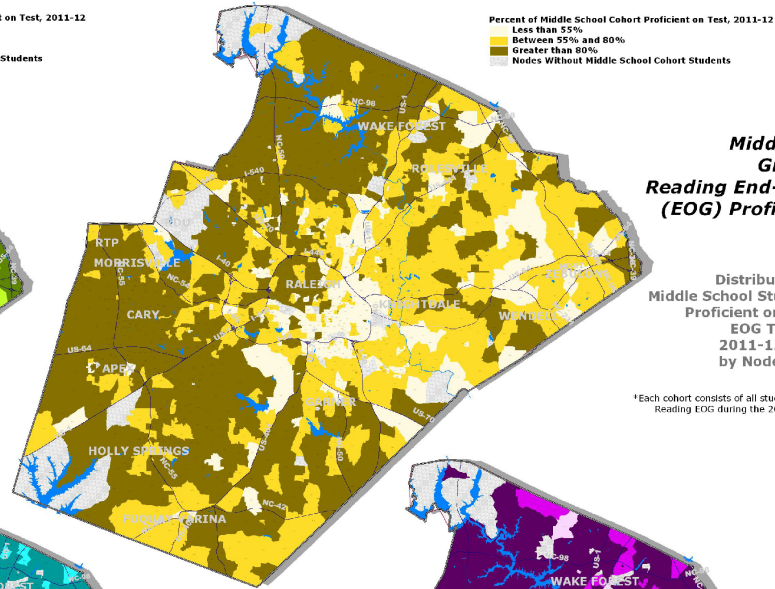
*Each cohort consists of
all students who took the
Reading EOG during the
2011-12 school year.



WCPSS Middle School Grades 6-8 Reading End-of-Grade (EOG) Proficiency = 76.7%

Distribution of 25,828
Middle School Student Cohort*
Proficient on the Reading
EOG Test during the
2011-12 School Year,
by Node of Residence

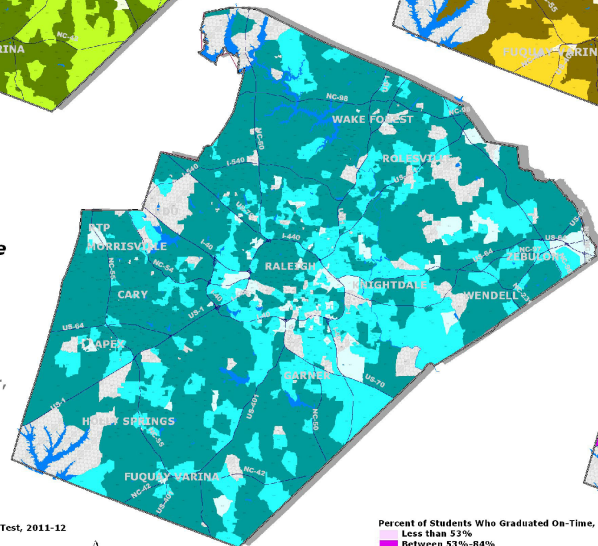
*Each cohort consists of all students who took the
Reading EOG during the 2011-12 school year.



WCPSS High School 9th Grade English I End-of-Course (EOC) Proficiency = 87.7%

Distribution of 9,786
Ninth Grade Student Cohort*
Proficient on the English I EOC
During the 2010-11 School Year,
by Node of Residence

*The cohort consists of all students who took the
English I EOC during the 2011-12 school year.



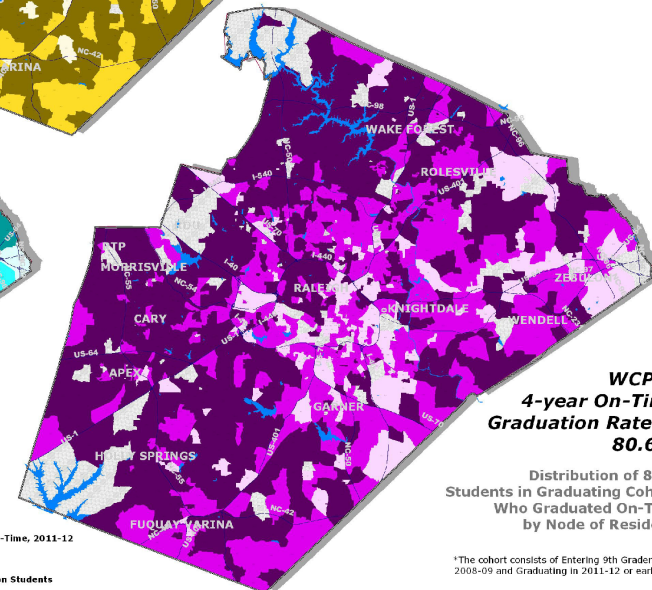
WCPSS 4-year On-Time Graduation Rate = 80.6%

Distribution of 8,748
Students in Graduating Cohort*
Who Graduated On-Time,
by Node of Residence

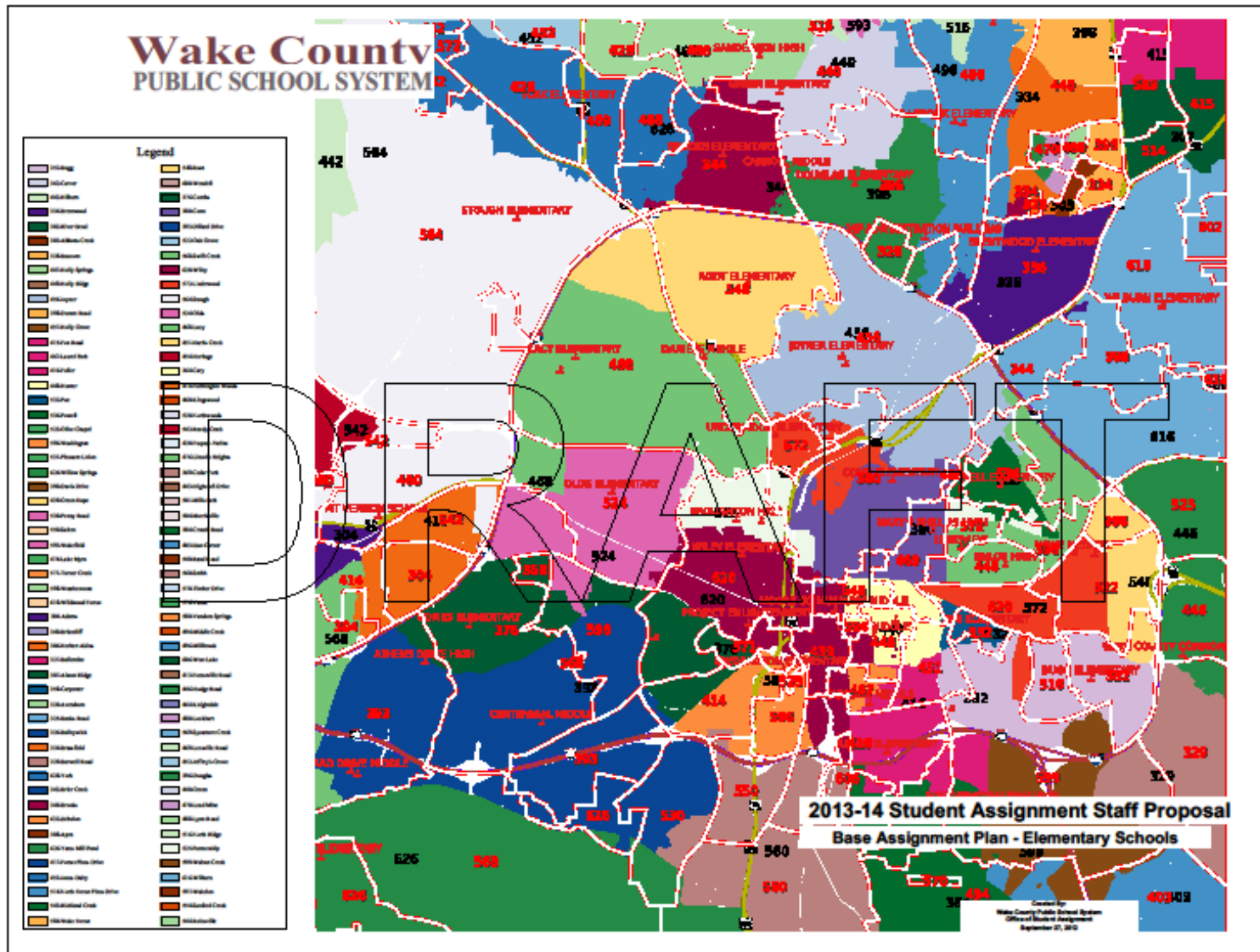
*The cohort consists of Entering 9th Graders in
2008-09 and Graduating in 2011-12 or earlier.

Percent of Students Who Graduated On-Time, 2011-12

- Less than 53%
- Between 53%-84%
- Greater than 84%
- Nodes Without On-Time-Graduation Students

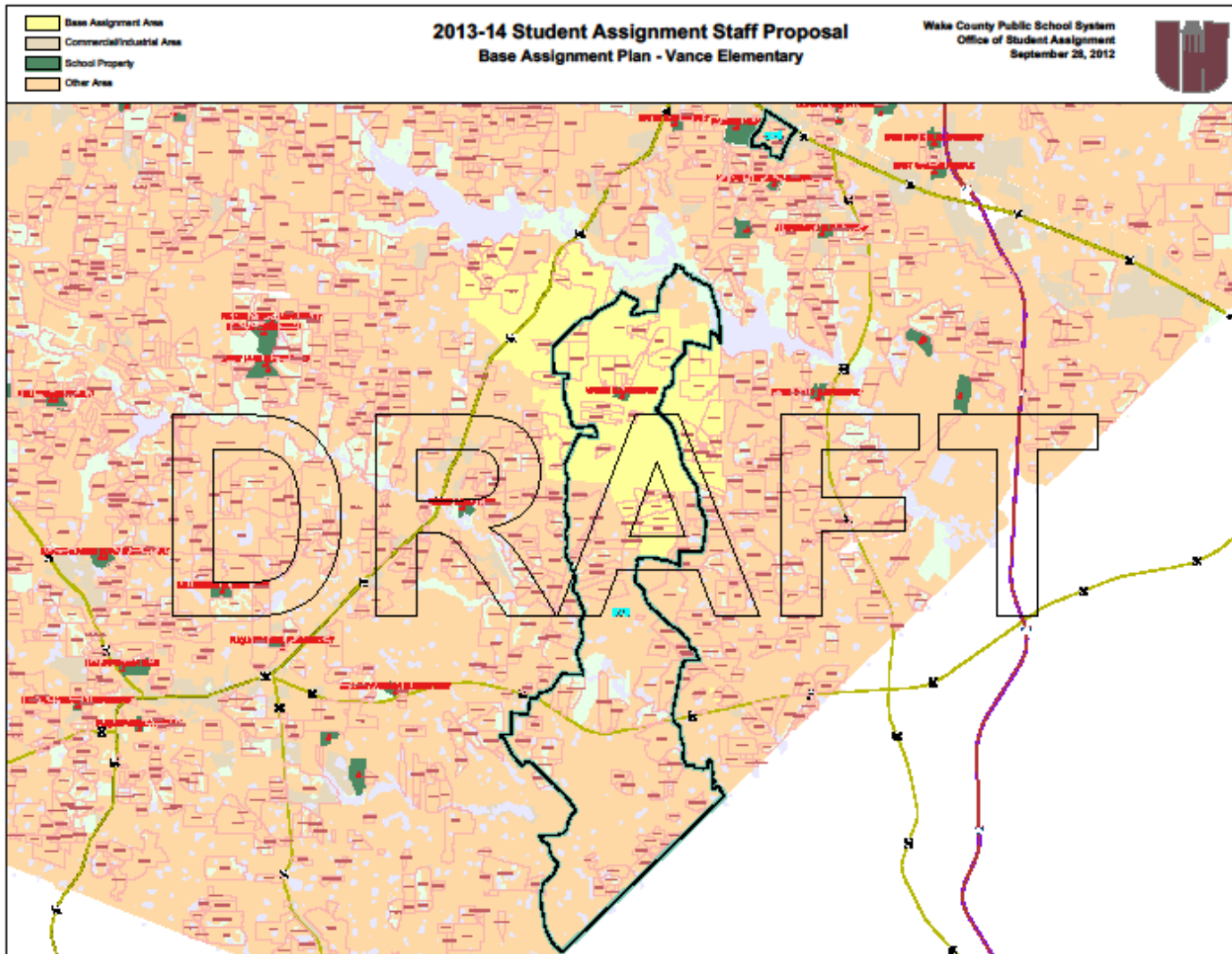


**WAKE COUNTY
PUBLIC SCHOOL SYSTEM**



PDF created with pdfFactory trial version www.pdffactory.com

Review Mechanics of the assignment proposal



PDF created with pdfFactory trial version www.pdffactory.com