



CONCEPT AERIAL VIEW

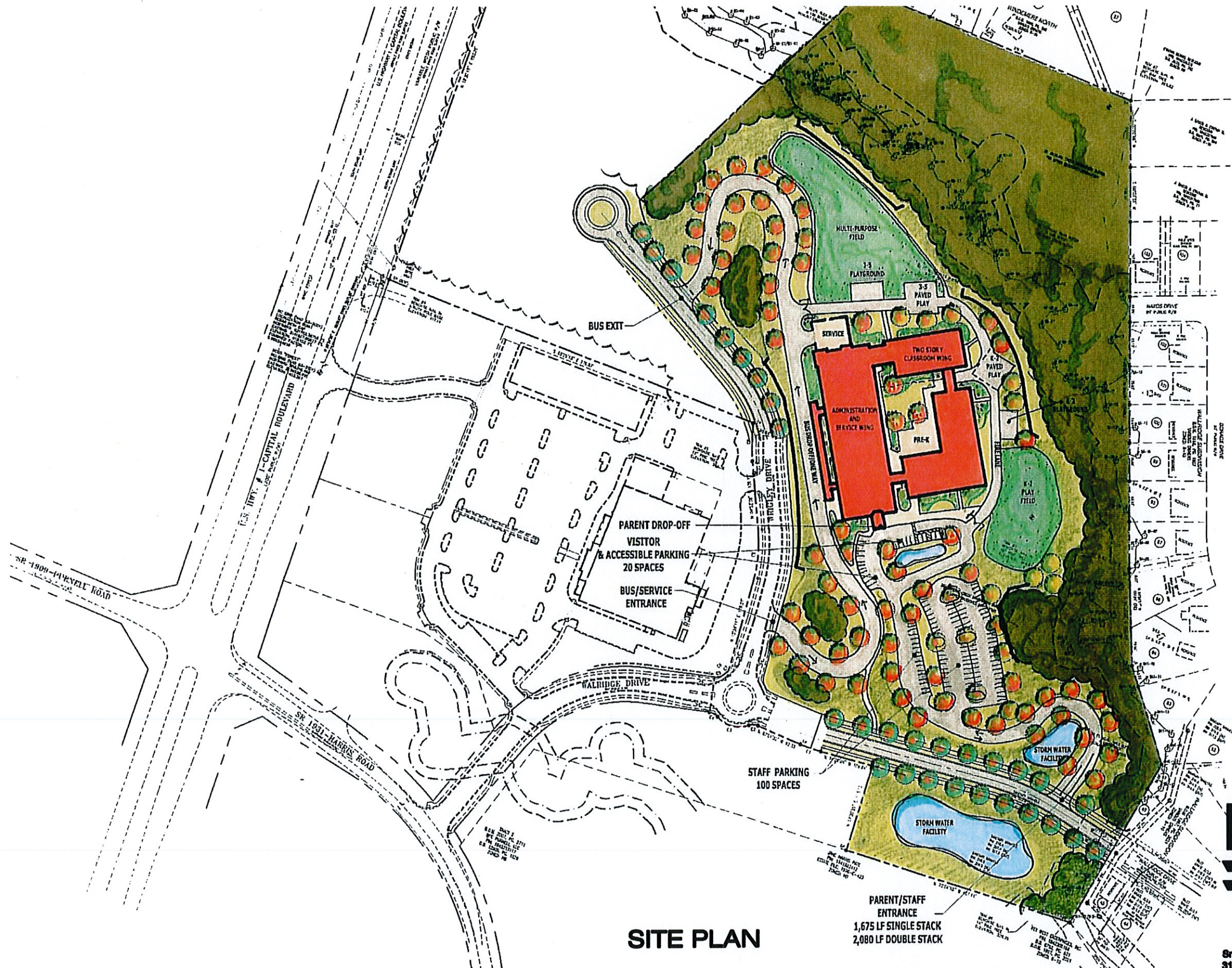


RICHLAND CREEK ELEMENTARY SCHOOL (E25)
WAKE COUNTY PUBLIC SCHOOL SYSTEM
WAKE FOREST, NC

Small Kane Webster Conley Architects, PA
3105 Glenwood Ave, Suite 100
Raleigh, NC 27612
T: 919.633.1994 F: 919.632.2993

ARCHITECTURE PLANNING INTERIOR DESIGN

28 JUNE 2012



SITE PLAN

RICHLAND CREEK ELEMENTARY SCHOOL (E25)

WAKE COUNTY PUBLIC SCHOOL SYSTEM
WAKE FOREST, NC

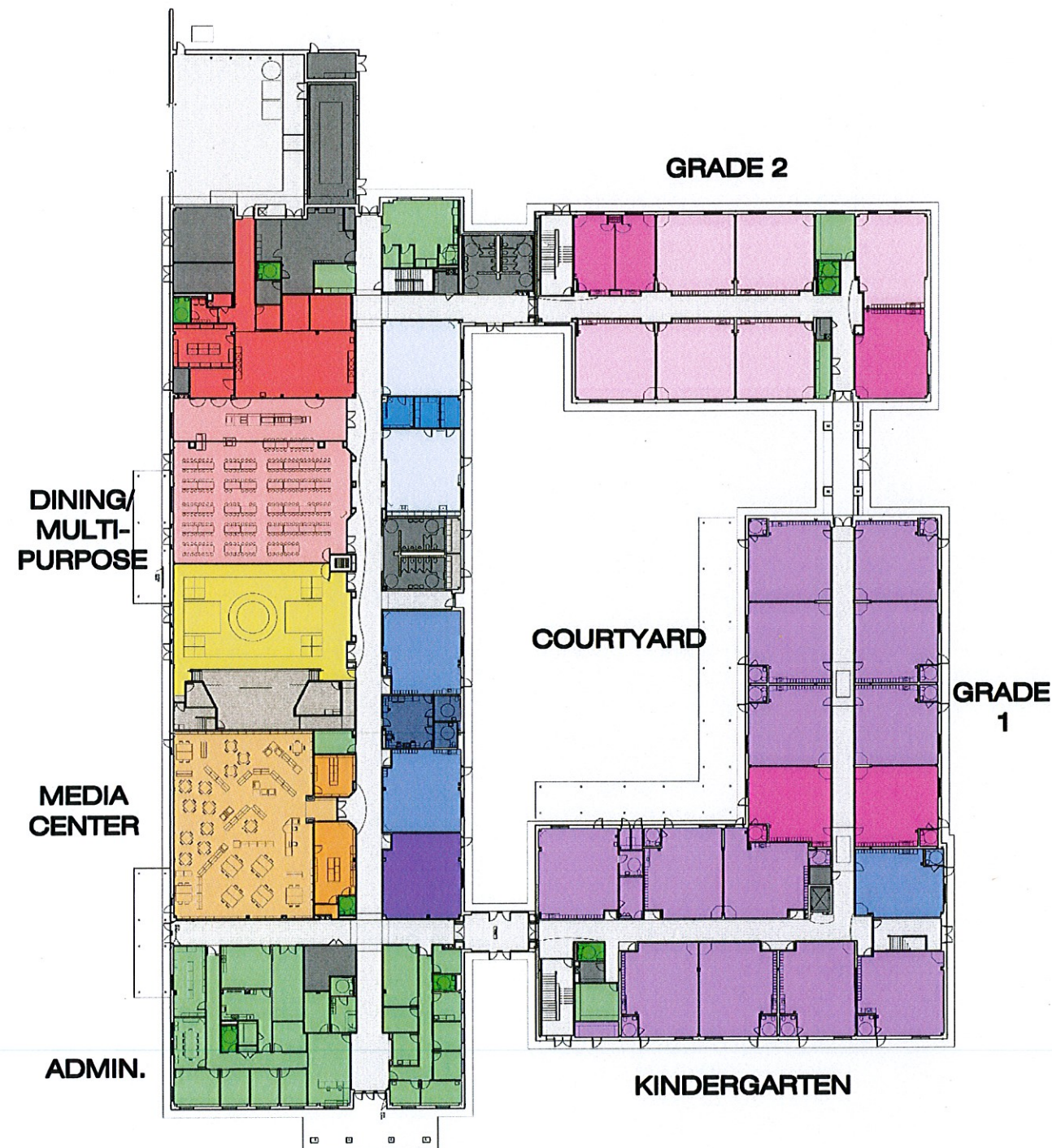
PARENT/STAFF
ENTRANCE
1,675 LF SINGLE STACK
2,080 LF DOUBLE STACK



Small Kane Webster Conley Architects, PA
3105 Glenwood Ave, Suite 100
Raleigh, NC 27612
T: 919.833.1994 F: 919.832.2993

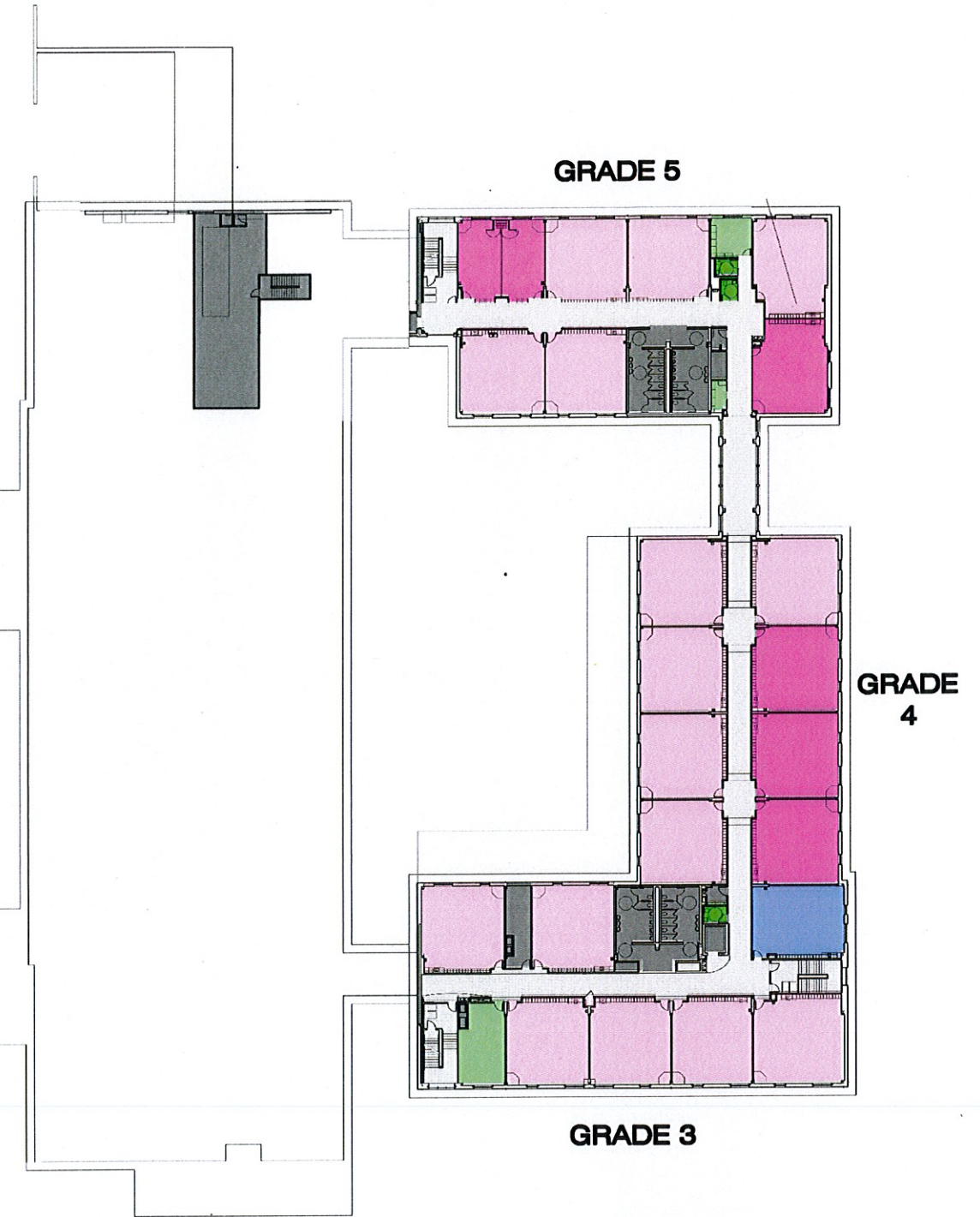
ARCHITECTURE PLANNING INTERIOR DESIGN

28 JUNE 2012



FIRST FLOOR PLAN

- GRADES 2-5
- GRADES K-1
- GENERAL EDUCATION
- ADMINISTRATION
- COMPUTER
- INSTRUCTIONAL
- SELF-CONTAINED
- STAFF TOILET
- STAGE/STORAGE
- MULTI-PURPOSE
- DINING
- KITCHEN
- MEDIA CENTER
- MEDIA OFFICE
- ART/MUSIC
- ART/MUSIC STORAGE
- CIRCULATION
- CORE



SECOND FLOOR PLAN

RICHLAND CREEK ELEMENTARY SCHOOL (E25)
 WAKE COUNTY PUBLIC SCHOOL SYSTEM
 WAKE FOREST, NC



Small Kane Webster Conley Architects, PA
 3105 Glenwood Ave, Suite 100
 Raleigh, NC 27612
 T: 919.833.1994 F: 919.832.2993
 ARCHITECTURE PLANNING INTERIOR DESIGN

28 JUNE 2012