

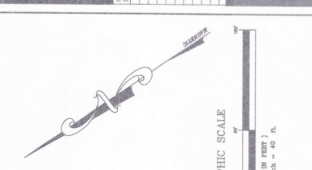
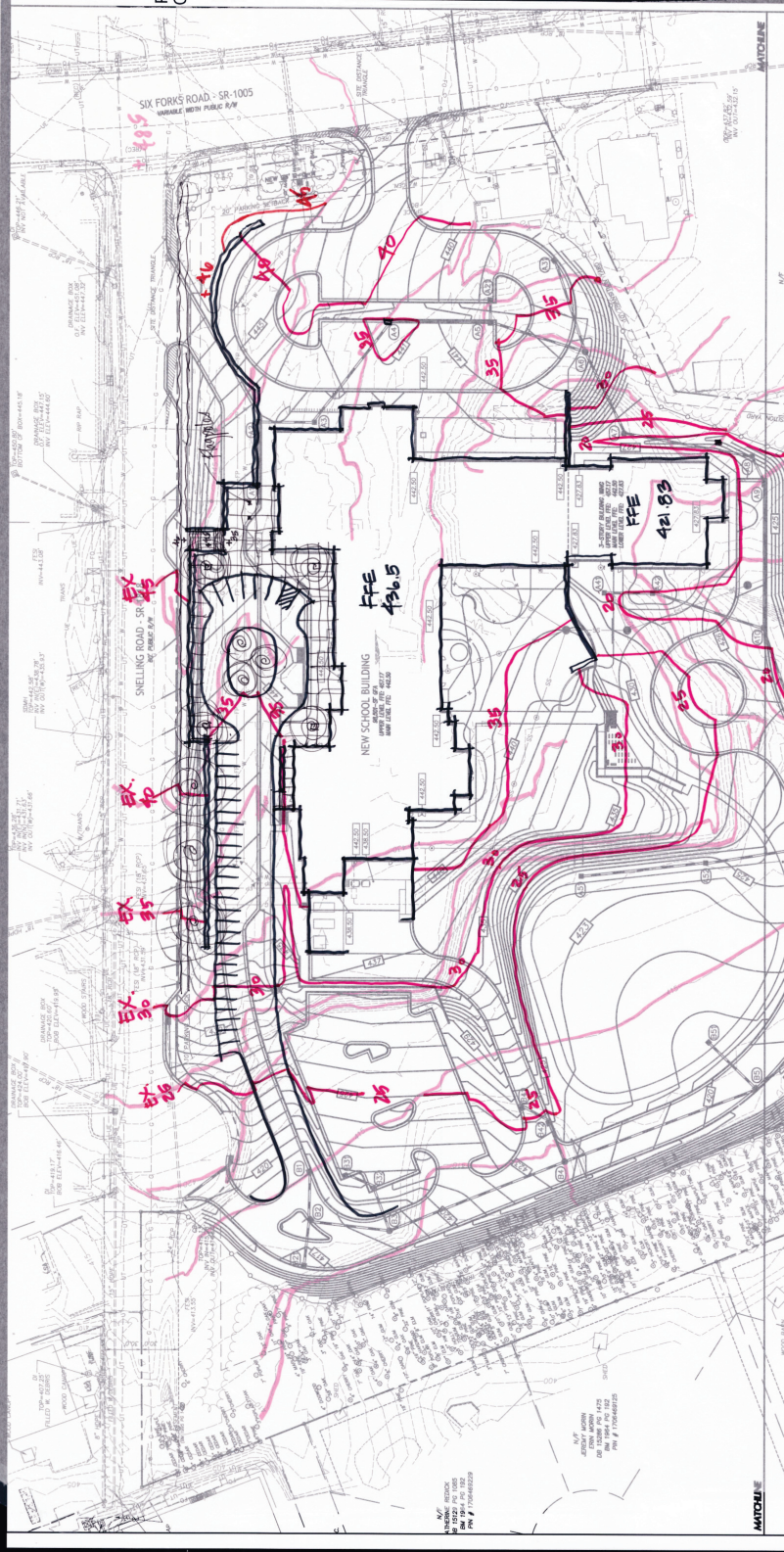


GREEN ELEMENTARY SCHOOL
 Wake County Public School System
 5307 Six Forks Road

NO.	DATE	REVISION

Site Grading
 Plan Area A

C 3.0



- GRADING LEGEND**
- EXISTING ELEVATIONS
 - FINAL CONTOURS
 - PROPOSED TOP OF CURB FOR ELEVATION
 - PROPOSED FINISH GRADE ELEVATION
 - PROPOSED GRADE
 - PROPOSED STORM DRAIN PIPE
 - PROPOSED STORM DRAIN MANHOLE
 - PROPOSED STORM DRAIN
 - PROPOSED ROAD PAVEMENT
 - PROPOSED SIDEWALK
 - PROPOSED DRIVEWAY
 - PROPOSED DRIVEWAY CURB
 - PROPOSED DRIVEWAY PAVEMENT
 - PROPOSED DRIVEWAY CURB
 - PROPOSED DRIVEWAY PAVEMENT

- GENERAL NOTES**
1. ALL CONSTRUCTION SHALL BE IN ACCORDANCE WITH ALL CITY OF RALEIGH AND NORTHERN TRIANGLE AND SPECIFICATIONS AND APPROVED BY THE CITY ENGINEER.
 2. ALL UTILITIES SHALL BE DEPTH TO TOP OF CURB, UNLESS OTHERWISE SHOWN.
 3. ALL UTILITIES SHALL BE DEPTH TO TOP OF CURB, UNLESS OTHERWISE SHOWN.
 4. CONSTRUCTION SHALL BE IN ACCORDANCE WITH ALL CITY OF RALEIGH AND NORTHERN TRIANGLE AND SPECIFICATIONS AND APPROVED BY THE CITY ENGINEER.
 5. ALL MATERIALS, METHODS, AND SPECIFICATIONS SHALL BE APPROVED BY THE CITY ENGINEER.
 6. PROTECTION AGAINST INTERFERENCE OF ADJACENT UTILITIES SHALL BE PROVIDED.
 7. EXISTING UTILITIES SHALL BE MAINTAINED UNLESS OTHERWISE NOTED.
 8. ALL UTILITIES SHALL BE DEPTH TO TOP OF CURB, UNLESS OTHERWISE SHOWN.
 9. ALL UTILITIES SHALL BE DEPTH TO TOP OF CURB, UNLESS OTHERWISE SHOWN.
 10. ALL UTILITIES SHALL BE DEPTH TO TOP OF CURB, UNLESS OTHERWISE SHOWN.
 11. ALL UTILITIES SHALL BE DEPTH TO TOP OF CURB, UNLESS OTHERWISE SHOWN.
 12. ALL UTILITIES SHALL BE DEPTH TO TOP OF CURB, UNLESS OTHERWISE SHOWN.
 13. ALL UTILITIES SHALL BE DEPTH TO TOP OF CURB, UNLESS OTHERWISE SHOWN.
 14. ALL UTILITIES SHALL BE DEPTH TO TOP OF CURB, UNLESS OTHERWISE SHOWN.
 15. ALL UTILITIES SHALL BE DEPTH TO TOP OF CURB, UNLESS OTHERWISE SHOWN.
 16. ALL UTILITIES SHALL BE DEPTH TO TOP OF CURB, UNLESS OTHERWISE SHOWN.
 17. ALL UTILITIES SHALL BE DEPTH TO TOP OF CURB, UNLESS OTHERWISE SHOWN.
 18. ALL UTILITIES SHALL BE DEPTH TO TOP OF CURB, UNLESS OTHERWISE SHOWN.
 19. ALL UTILITIES SHALL BE DEPTH TO TOP OF CURB, UNLESS OTHERWISE SHOWN.
 20. ALL UTILITIES SHALL BE DEPTH TO TOP OF CURB, UNLESS OTHERWISE SHOWN.

STORM DRAINAGE CALCULATIONS

AREA	AREA (AC)	PERCENTAGE IMPERVIOUS (%)	PERCENTAGE PERMEABLE (%)	PERCENTAGE PAVED (%)	PERCENTAGE GRAVEL (%)	PERCENTAGE ASPHALT (%)	PERCENTAGE CONCRETE (%)	PERCENTAGE OTHER (%)	PERCENTAGE TOTAL (%)
TOTAL IMPERVIOUS AREA	14.43	100	0	0	0	0	0	0	100
PERCENTAGE IMPERVIOUS	14.43	100	0	0	0	0	0	0	100
PERCENTAGE PERMEABLE	0.00	0	100	0	0	0	0	0	0
PERCENTAGE PAVED	0.00	0	0	100	0	0	0	0	0
PERCENTAGE GRAVEL	0.00	0	0	0	100	0	0	0	0
PERCENTAGE ASPHALT	0.00	0	0	0	0	100	0	0	0
PERCENTAGE CONCRETE	0.00	0	0	0	0	0	100	0	0
PERCENTAGE OTHER	0.00	0	0	0	0	0	0	100	0
TOTAL	14.43	100	0	0	0	0	0	0	100