


WCPSS Enrollment Projection Update



Wake County Board of Education
and Wake County Board of Commissioners
Joint Meeting
January 17, 2013

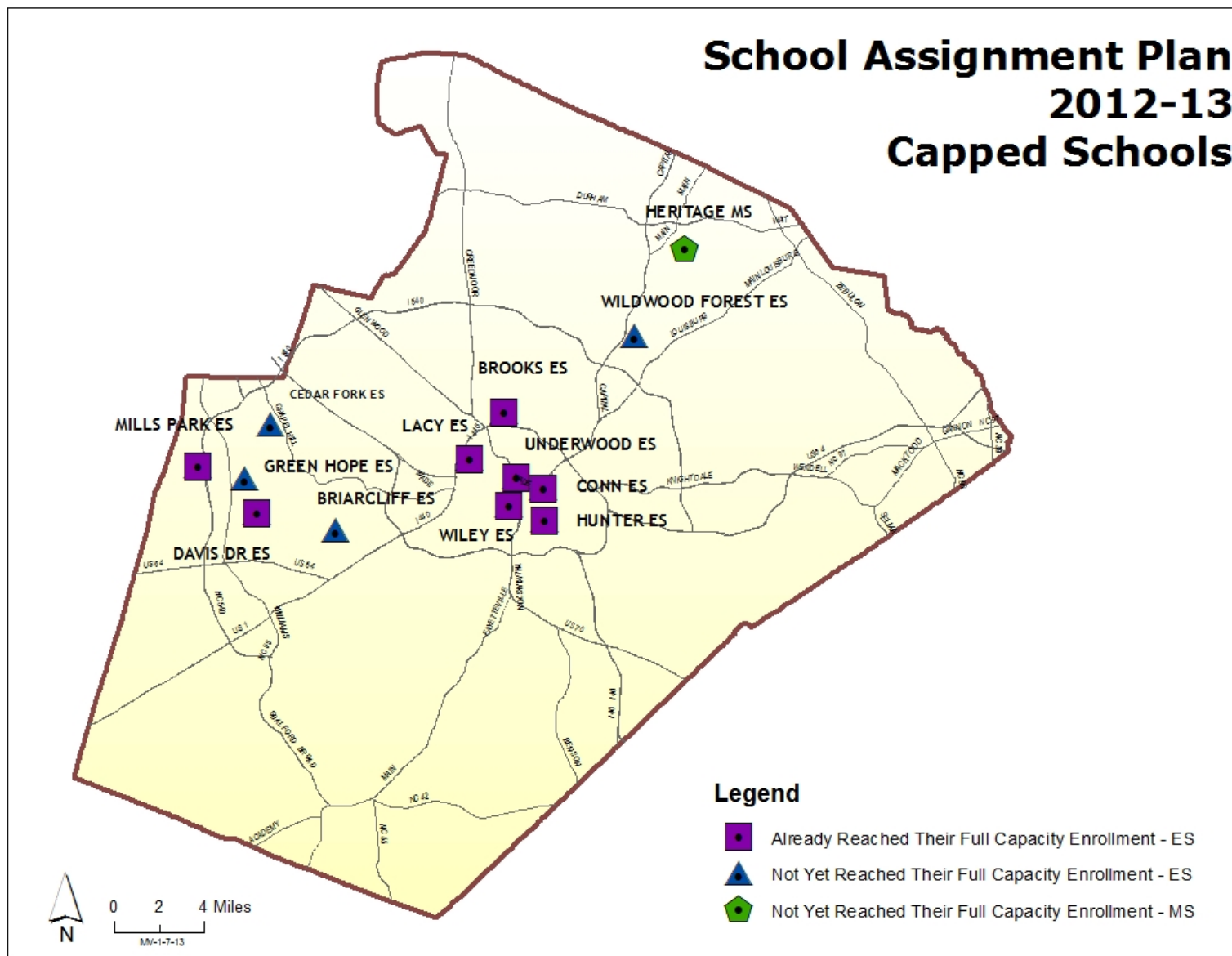


Laura Evans, Senior Director for WCPSS Student Assignment
Nicole Kreiser, Wake County Debt and Capital Director

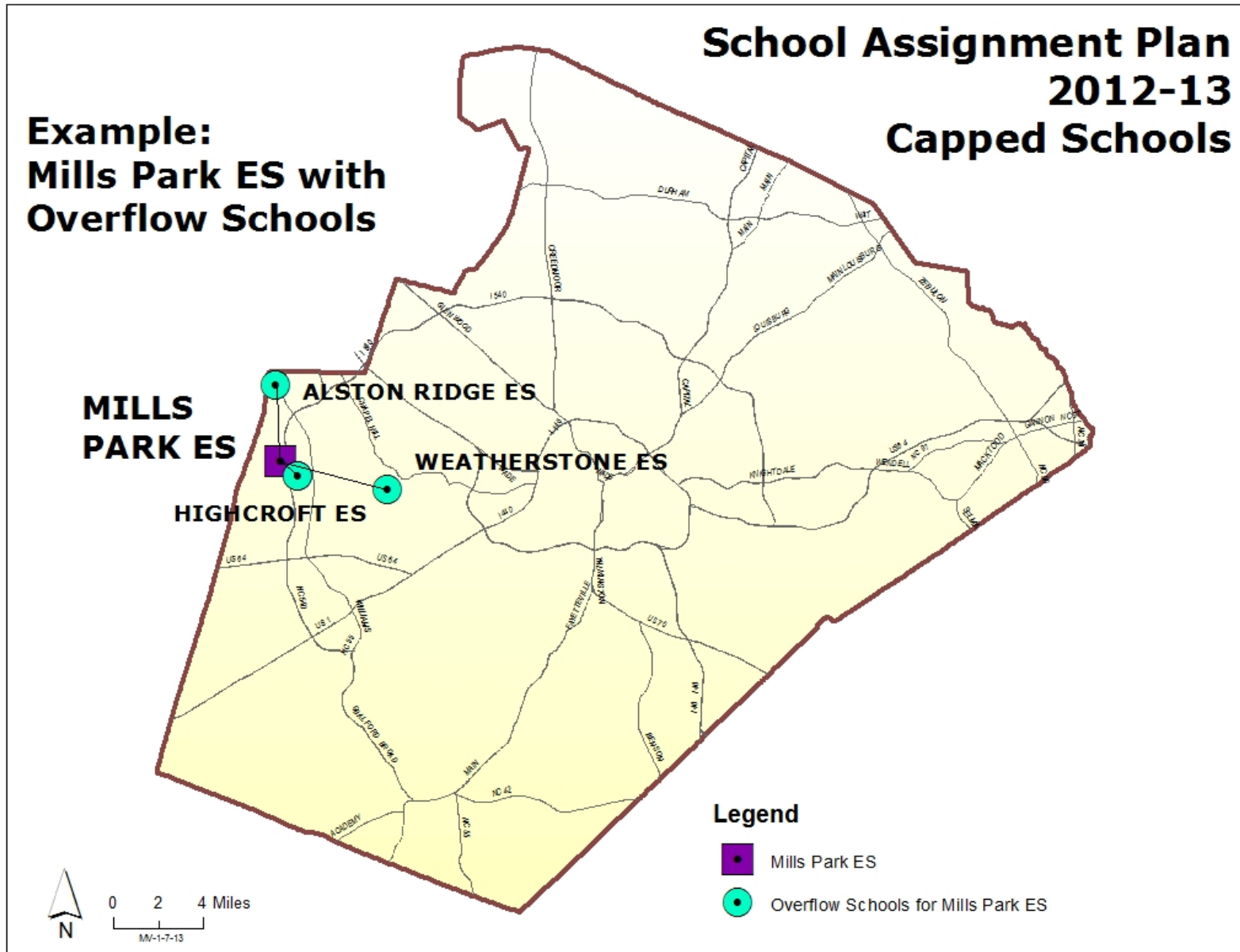
Presentation Overview

- ▶ School Enrollment Capping
- ▶ Presentation of Joint Staff Enrollment Projections

Schools Identified for Capping



Example of a Capped School



Capped Schools for 2012-2013

Already reached their enrollment cap:

- ▶ Brooks Elementary
- ▶ Conn Elementary
- ▶ Davis Drive Elementary
- ▶ Hunter Elementary
- ▶ Lacy Elementary
- ▶ Mills Park Elementary
- ▶ Underwood Elementary
- ▶ Wiley Elementary

Not yet reached their enrollment cap:

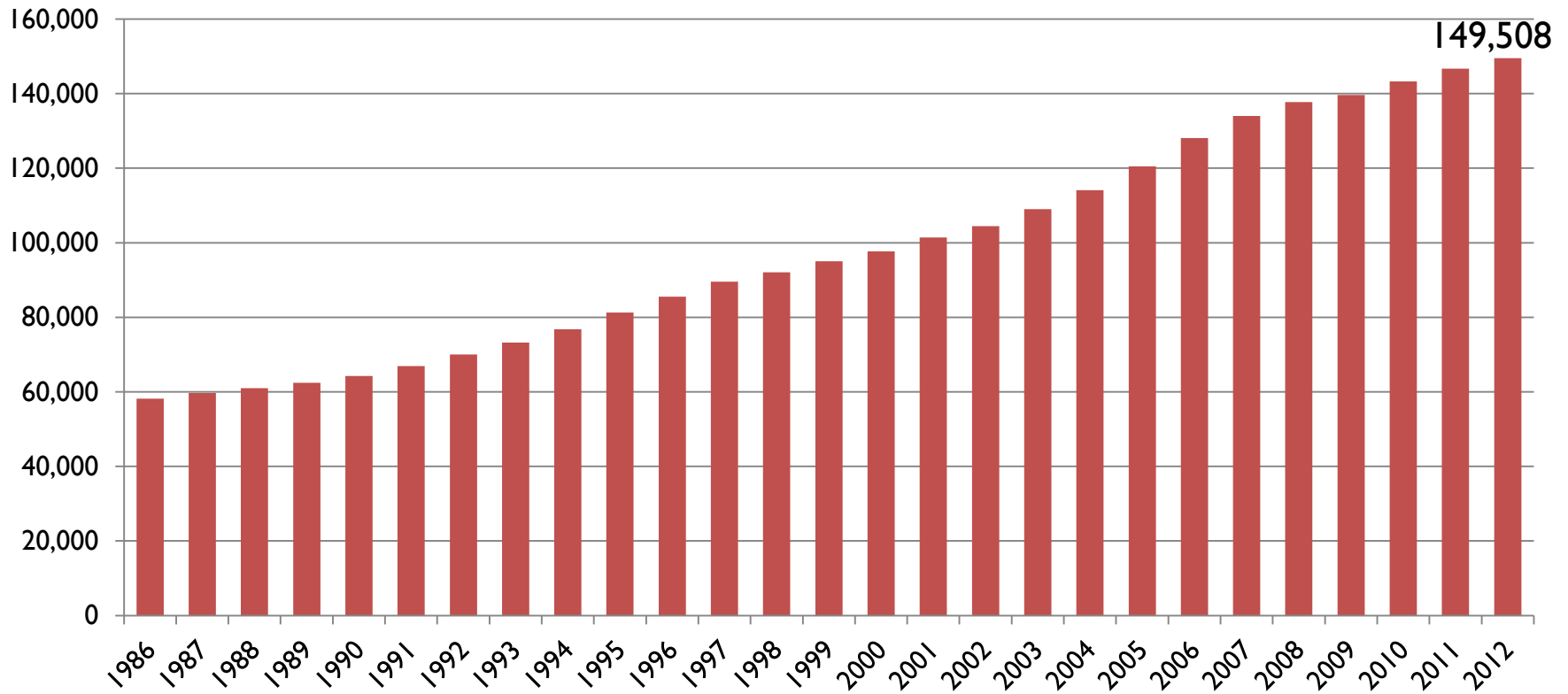
- ▶ Briarcliff Elementary
- ▶ Cedar Fork Elementary
- ▶ Green Hope Elementary
- ▶ Heritage Middle

Capped Schools for 2013-2014

- ▶ No schools are currently capped for the 2013-2014 school year.
- ▶ Staff will monitor enrollment through the spring months to determine if there is a need to request enrollment caps for the new school year.

Historical WCPSS Enrollment

▶ WCPSS 20th Day Enrollment



2012 20th Day

► Enrollment Projection & Actual 20th Day

	2012-2013 Joint Projection	2012-2013 20th Day Enrollment	Variance (Projection less Actual)
Elementary	72,165	71,190	(975)
Middle	34,844	34,631	(213)
High	43,409	43,687	278
Total	150,418	149,508	(910)

► Change from 2011 20th Day:

- 2,821 more WCPSS students (1.9%)

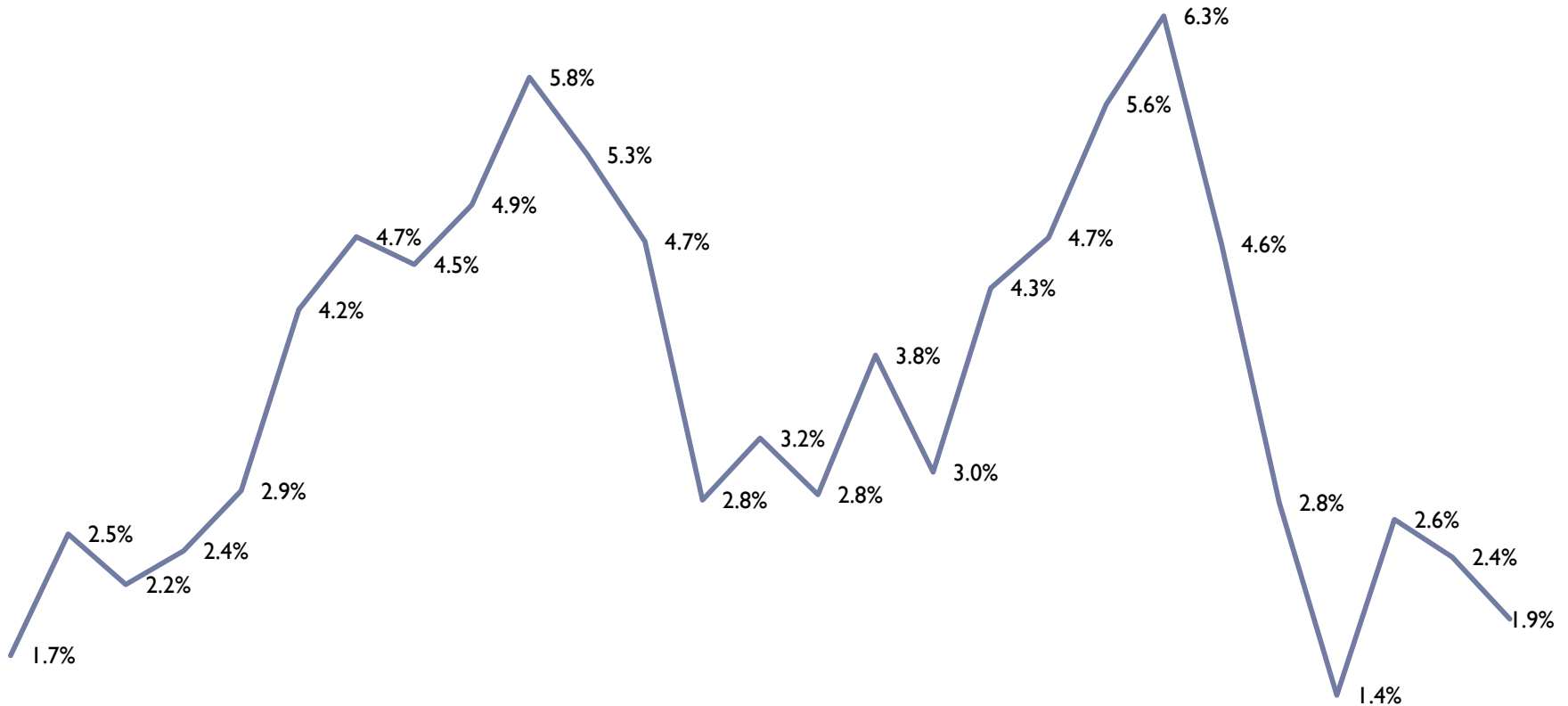
► 2012 20th Day Charter School Enrollment: 6,229

- 431 more charter school students (7.4%)
 - New schools: Research Triangle High School, Triangle Math & Science
 - Increases at PreEminent Charter and Southern Wake Academy

Note:

----- Charter school enrollment from September charter school billings to WCPSS -----

Historical WCPSS Enrollment Percentage Growth



Historical Enrollment by Grade

	<u>2001</u>	<u>2002</u>	<u>2003</u>	<u>2004</u>	<u>2005</u>	<u>2006</u>	<u>2007</u>	<u>2008</u>	<u>2009</u>	<u>2010</u>	<u>2011</u>	<u>2012</u>
K	8,386	8,708	9,142	9,581	10,438	11,098	11,289	11,629	10,647	11,555	12,002	12,018
1	8,413	8,588	9,071	9,554	10,109	11,073	11,724	11,712	11,880	10,996	11,907	12,245
2	8,223	8,307	8,503	9,221	9,819	10,410	11,128	11,611	11,618	11,942	11,185	11,946
3	8,300	8,388	8,488	8,763	9,585	10,218	10,662	11,123	11,625	11,647	11,982	11,259
4	8,122	8,271	8,512	8,724	9,108	10,011	10,511	10,800	11,094	11,674	11,655	12,018
5	8,191	8,193	8,524	8,913	9,190	9,585	10,366	10,633	10,926	11,326	11,833	11,704
6	8,454	8,504	8,540	8,845	9,223	9,627	9,956	10,512	10,715	11,040	11,382	11,819
7	8,215	8,572	8,772	8,872	9,354	9,685	10,041	10,209	10,621	10,943	11,204	11,532
8	7,818	8,223	8,707	8,995	9,182	9,719	9,978	10,200	10,248	10,759	11,164	11,280
9	8,419	8,873	9,484	10,146	10,672	11,231	12,080	12,287	12,255	12,356	12,658	12,898
10	6,992	7,317	7,935	8,302	8,917	9,418	9,458	9,957	10,287	10,381	10,663	11,202
11	6,298	6,546	6,971	7,309	7,833	8,359	8,766	8,638	9,237	9,609	9,760	10,066
12	5,601	5,971	6,320	6,843	7,074	7,638	8,043	8,395	8,446	9,061	9,292	9,521
Total	101,432	104,461	108,969	114,068	120,504	128,072	134,002	137,706	139,599	143,289	146,687	149,508
# Growth	3,741	3,029	4,508	5,099	6,436	7,568	5,930	3,704	1,893	3,690	3,398	2,821
% Growth	3.8%	3.0%	4.3%	4.7%	5.6%	6.3%	4.6%	2.8%	1.4%	2.6%	2.4%	1.9%

- ▶ Smallest number increase in Kindergarten students (excluding 2009 change to enrollment age) – 16 student increase from prior year
- ▶ This decrease, as with the decreasing live births, will result in lower enrollments from year to year without in-migration

Market Share

FY	Academic Year	Private Schools	Home Schools	Charter Schools	WCPSS 20th Day	K-12 Totals	Private Schools	Home Schools	Charter Schools	WCPSS 20th Day	Total
2001	2000-2001	12,006	3,131	2,334	97,691	115,162	10.4%	2.7%	2.0%	84.8%	100%
2002	2001-2002	12,615	4,490	2,964	101,432	121,501	10.4%	3.7%	2.4%	83.5%	100%
2003	2002-2003	13,267	5,042	3,471	104,461	126,241	10.5%	4.0%	2.7%	82.7%	100%
2004	2003-2004	12,951	5,374	3,962	108,969	131,256	9.9%	4.1%	3.0%	83.0%	100%
2005	2004-2005	13,375	5,801	4,531	114,068	137,775	9.7%	4.2%	3.3%	82.8%	100%
2006	2005-2006	13,525	6,361	4,997	120,504	145,387	9.3%	4.4%	3.4%	82.9%	100%
2007	2006-2007	14,021	6,516	4,985	128,072	153,594	9.1%	4.2%	3.2%	83.4%	100%
2008	2007-2008	14,696	7,059	5,319	134,002	161,076	9.1%	4.4%	3.3%	83.2%	100%
2009	2008-2009	15,123	7,571	4,990	137,706	165,390	9.1%	4.6%	3.0%	83.3%	100%
2010	2009-2010	15,689	7,890	5,299	139,599	168,477	9.3%	4.7%	3.1%	82.9%	100%
2011	2010-2011	16,084	8,033	5,398	143,289	172,804	9.3%	4.6%	3.1%	82.9%	100%
2012	2011-2012	16,135	7,600	5,798	146,687	176,220	9.2%	4.3%	3.3%	83.2%	100%
2013	2012-2013	To be Released	To be Released	6,229	149,508						

NC Department of Public Instruction 1st month membership last day reports for Wake County Public School System: 20th day.

Private and Home schools data compiled from the North Carolina Division of Non-Public Education website. Data released Spring of current school year.

Home and Private Schools data collection may not reflect 20th day enrollment. Charter schools data from WCPSS Fall billing of charter school students.

2013 Enrollment Projection Update

▶ Methodology

- ▶ Review enrollment growth in prior years
- ▶ Review other indicators
 - ▶ Progression of age cohorts
 - ▶ In-migration
 - ▶ Home school/private/charter (market share)

▶ Review demographic information

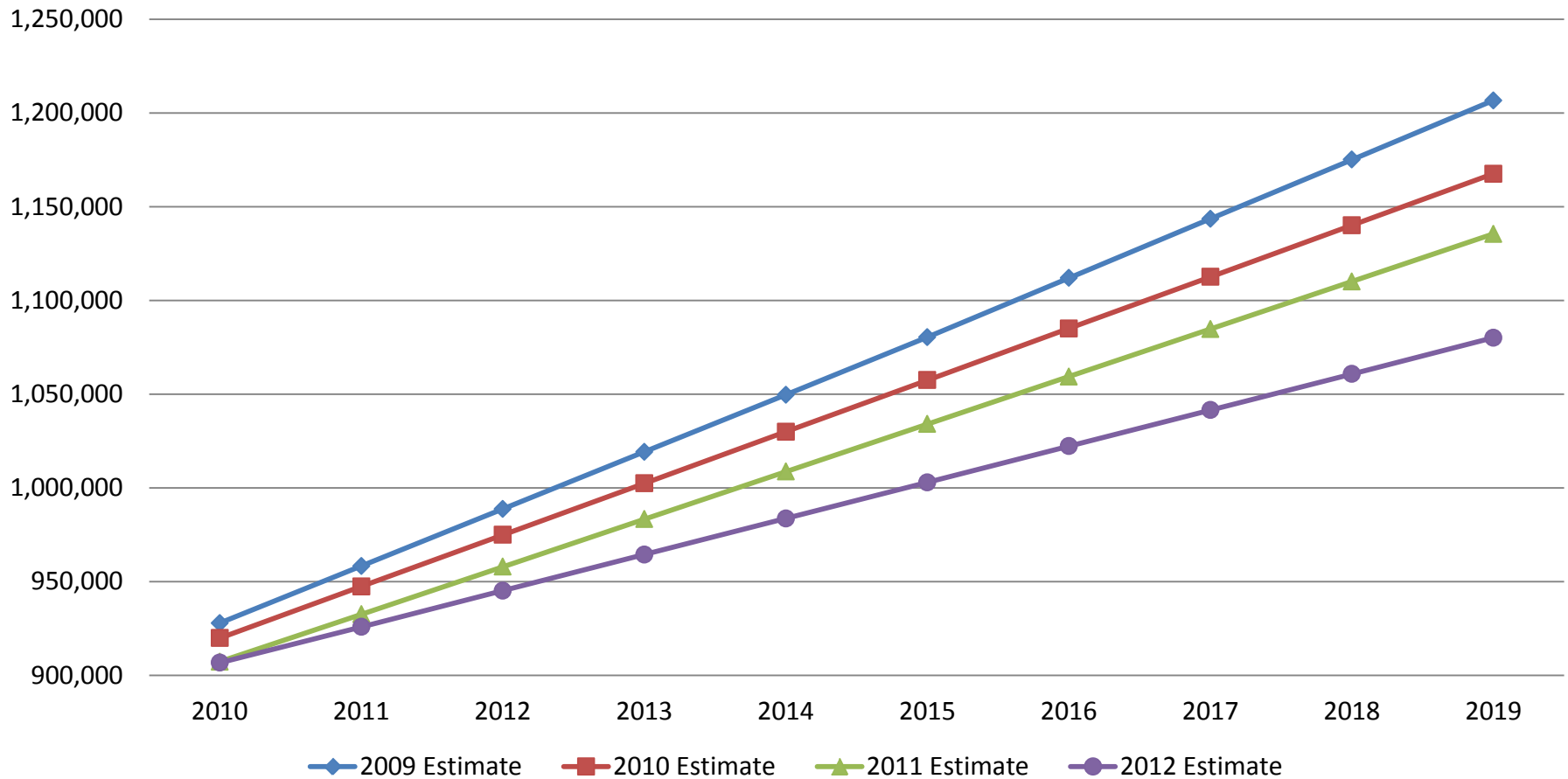
- ▶ State Demographer Population Projections
- ▶ Live Births
- ▶ Understand difference between residential live births and kindergarten enrollment

▶ Review economic information

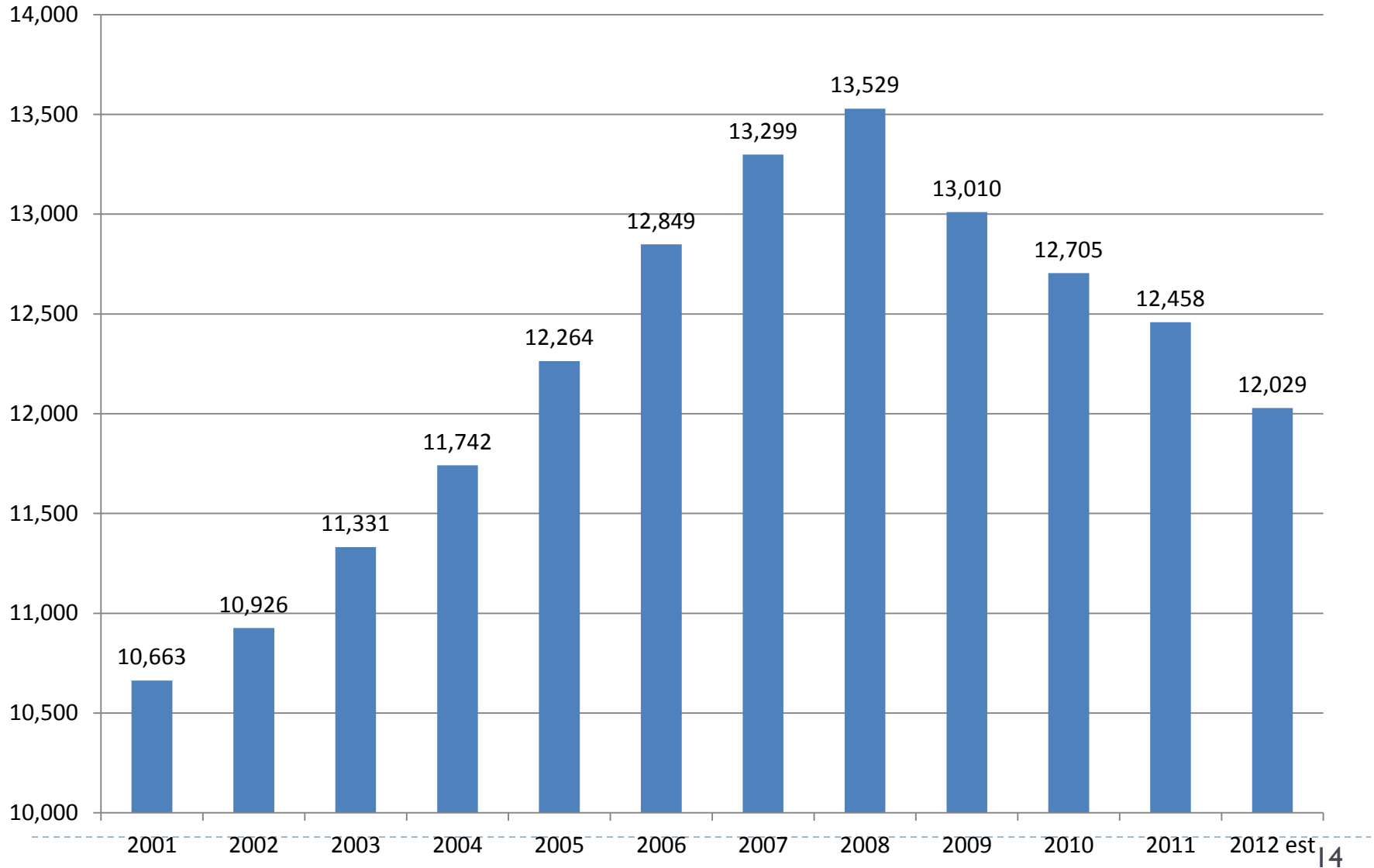
- ▶ Building Permits
- ▶ Sales Tax
- ▶ Unemployment

Revised County Population Growth Projections

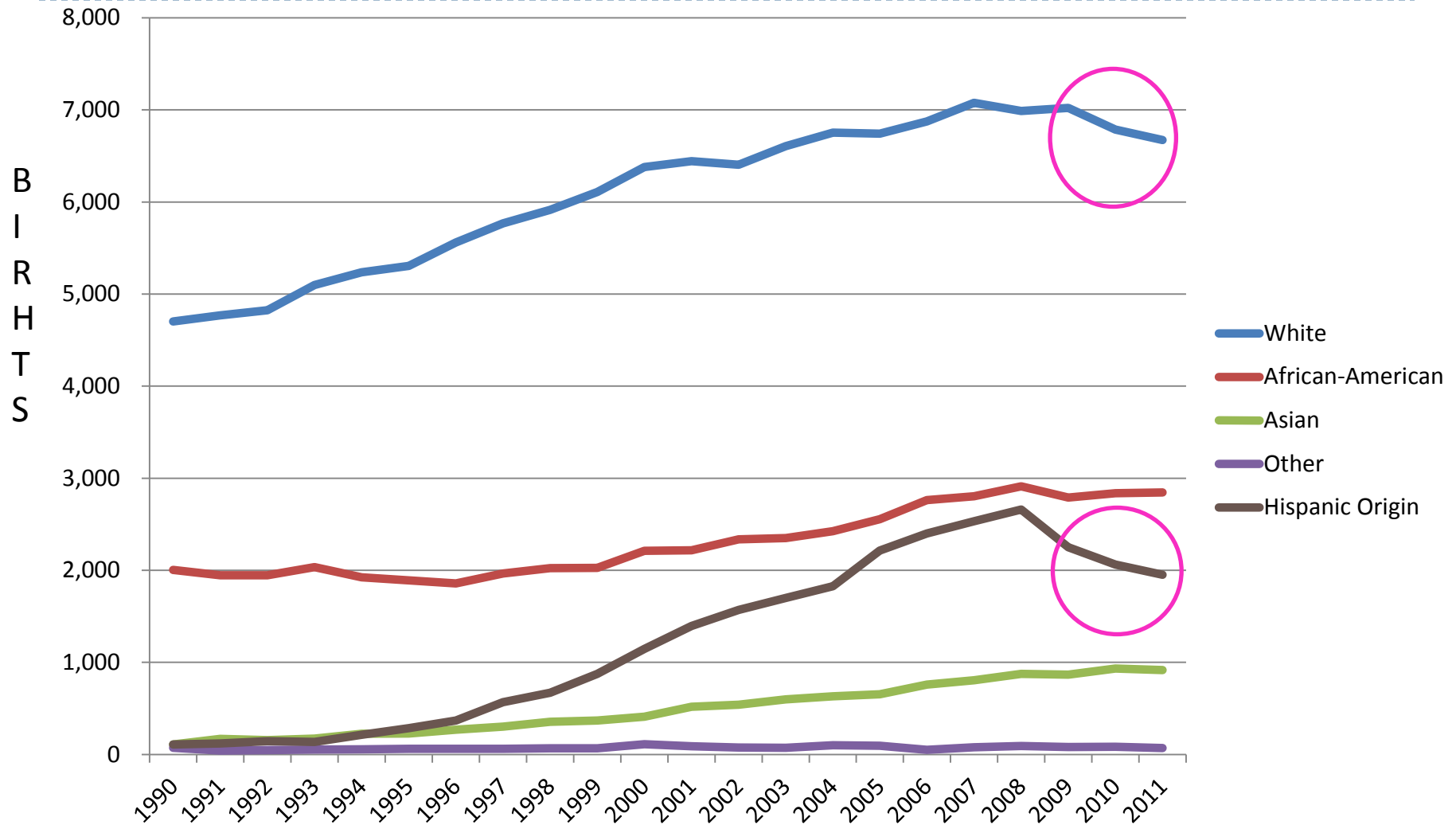
County Population Estimates (State Demographer)



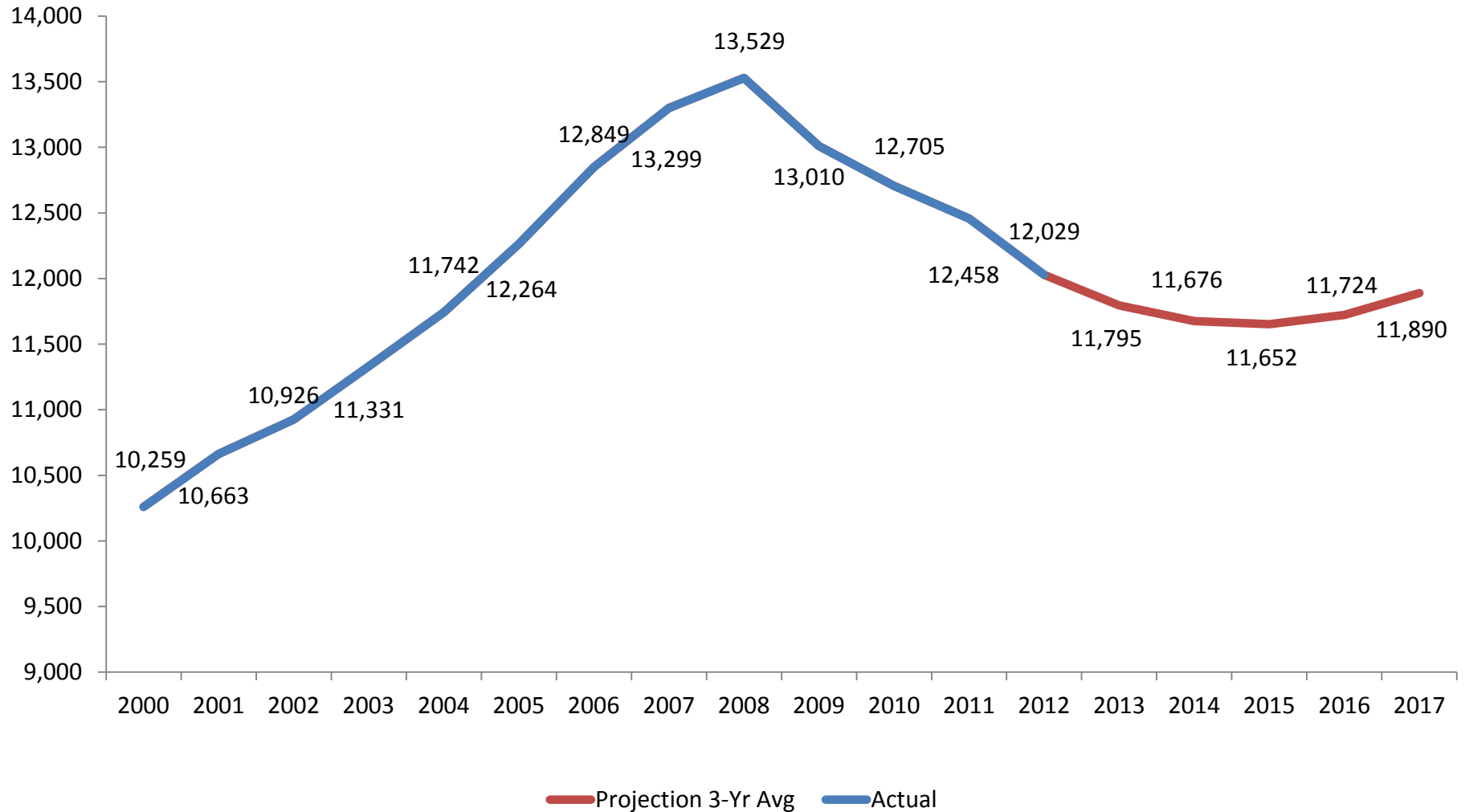
Fewer Live Births



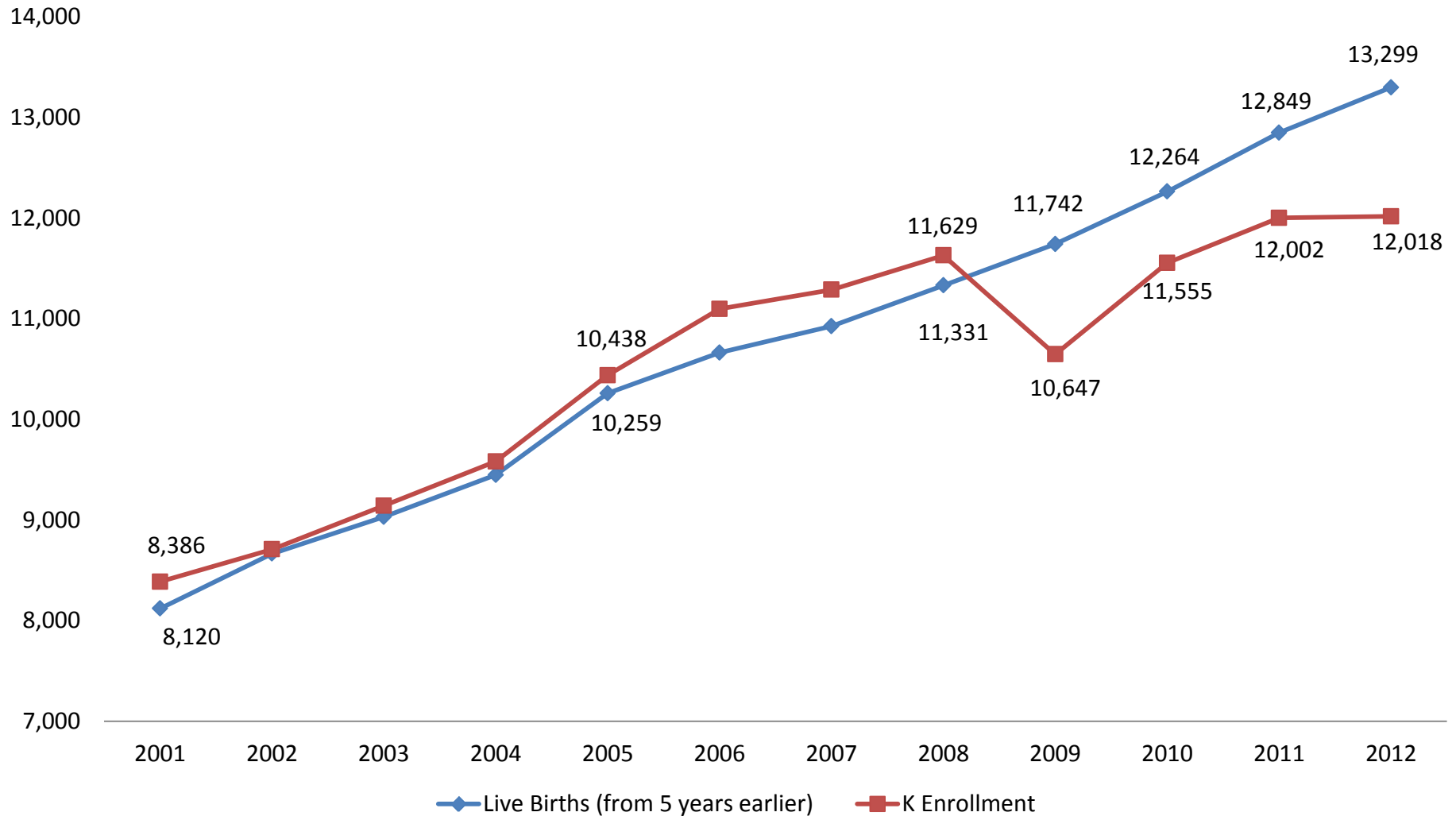
Live Births by Race



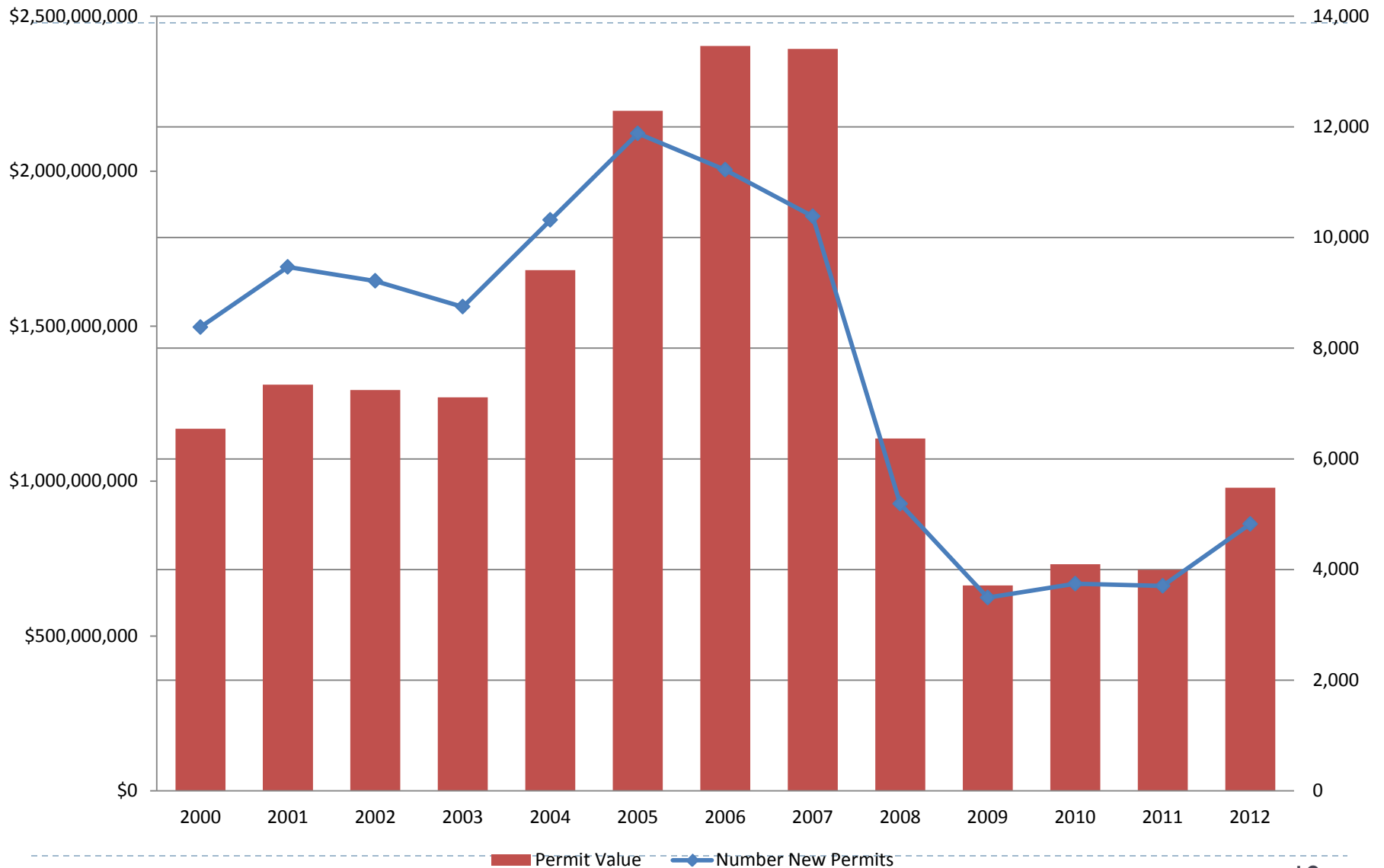
Live Birth Current Projection



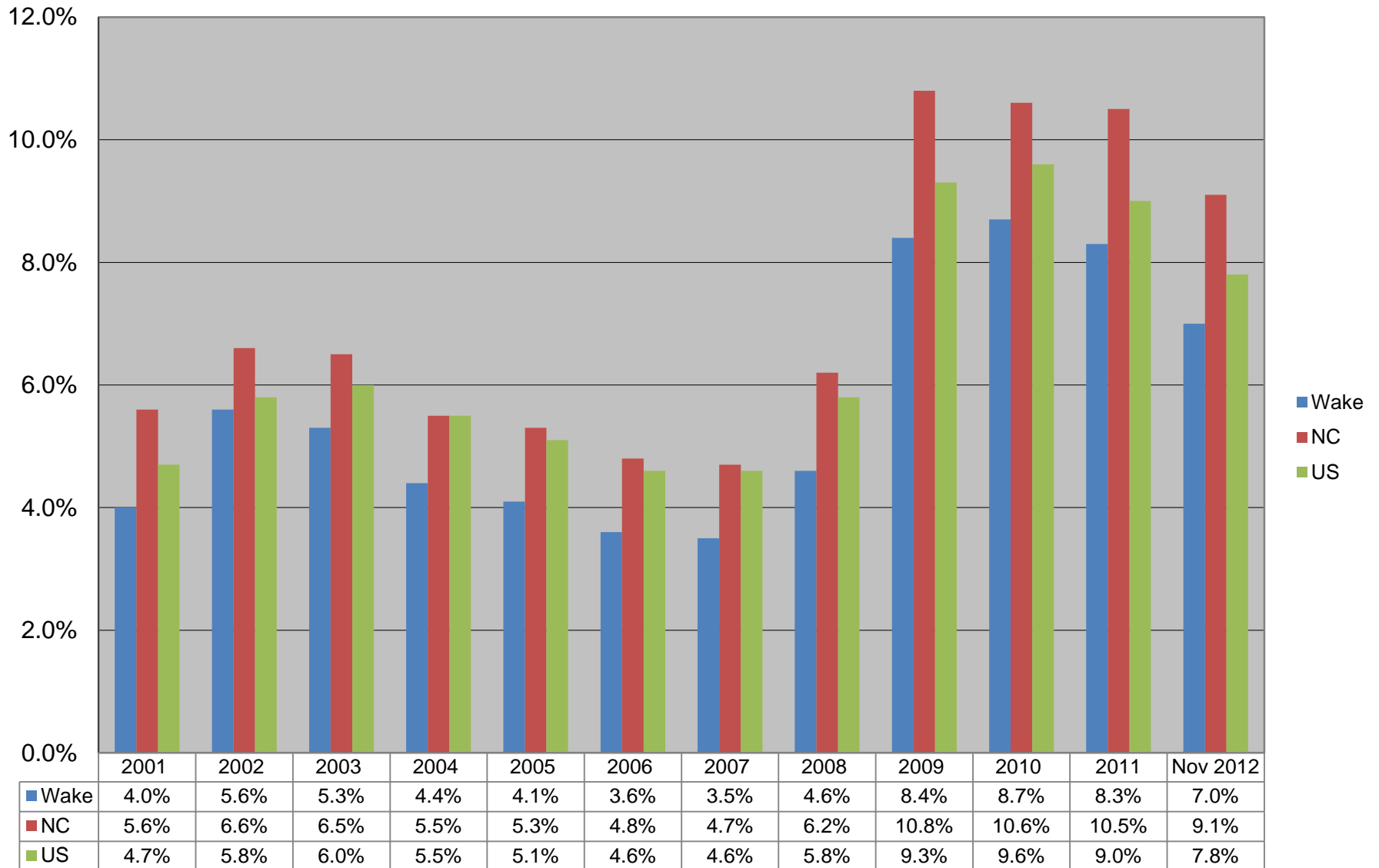
Live Births and Kindergarten Enrollments



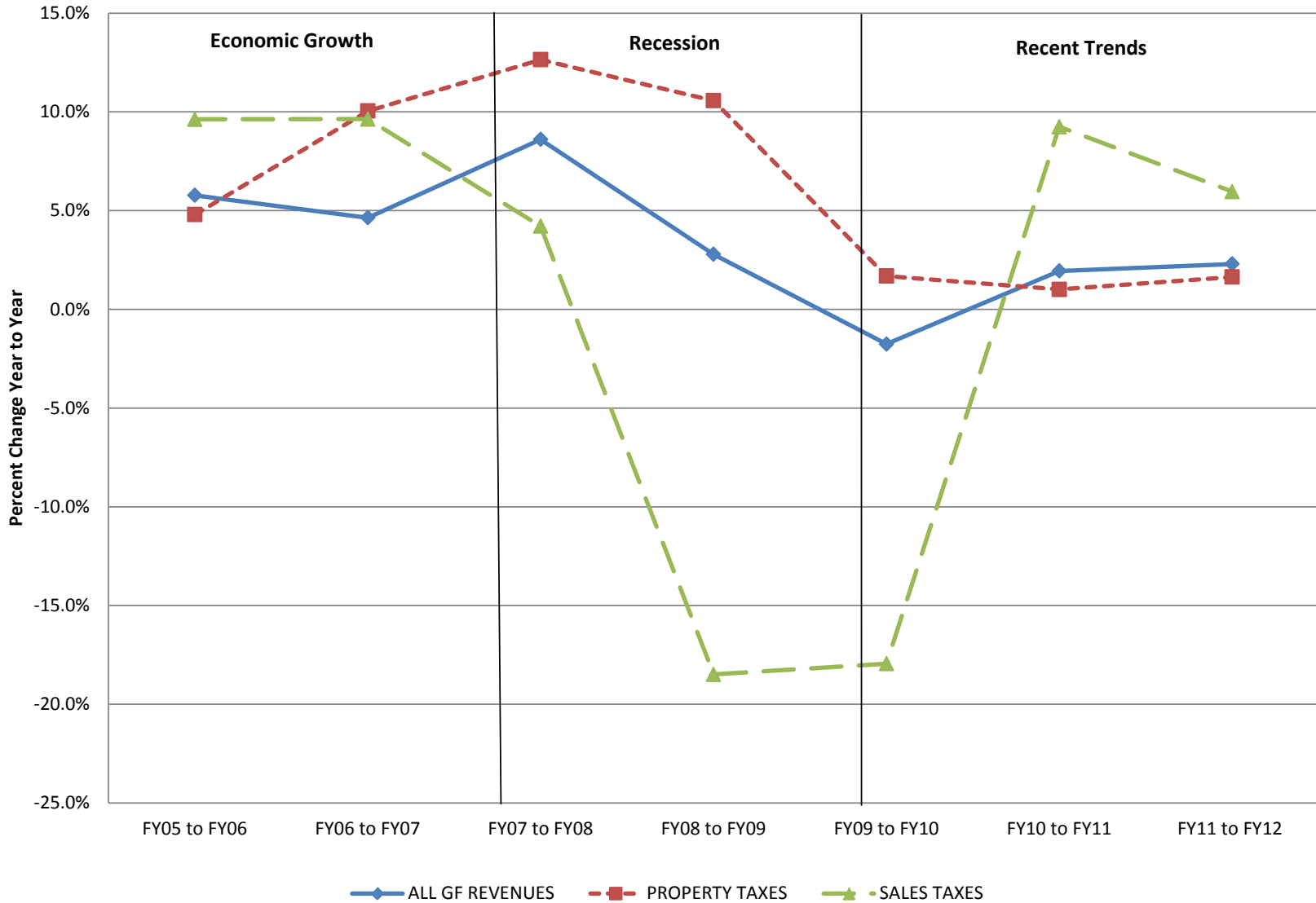
New Residential Building Permits in Wake County: January - December



Unemployment Rate



Wake County General Fund Revenue



2013-2014 Enrollment Projection

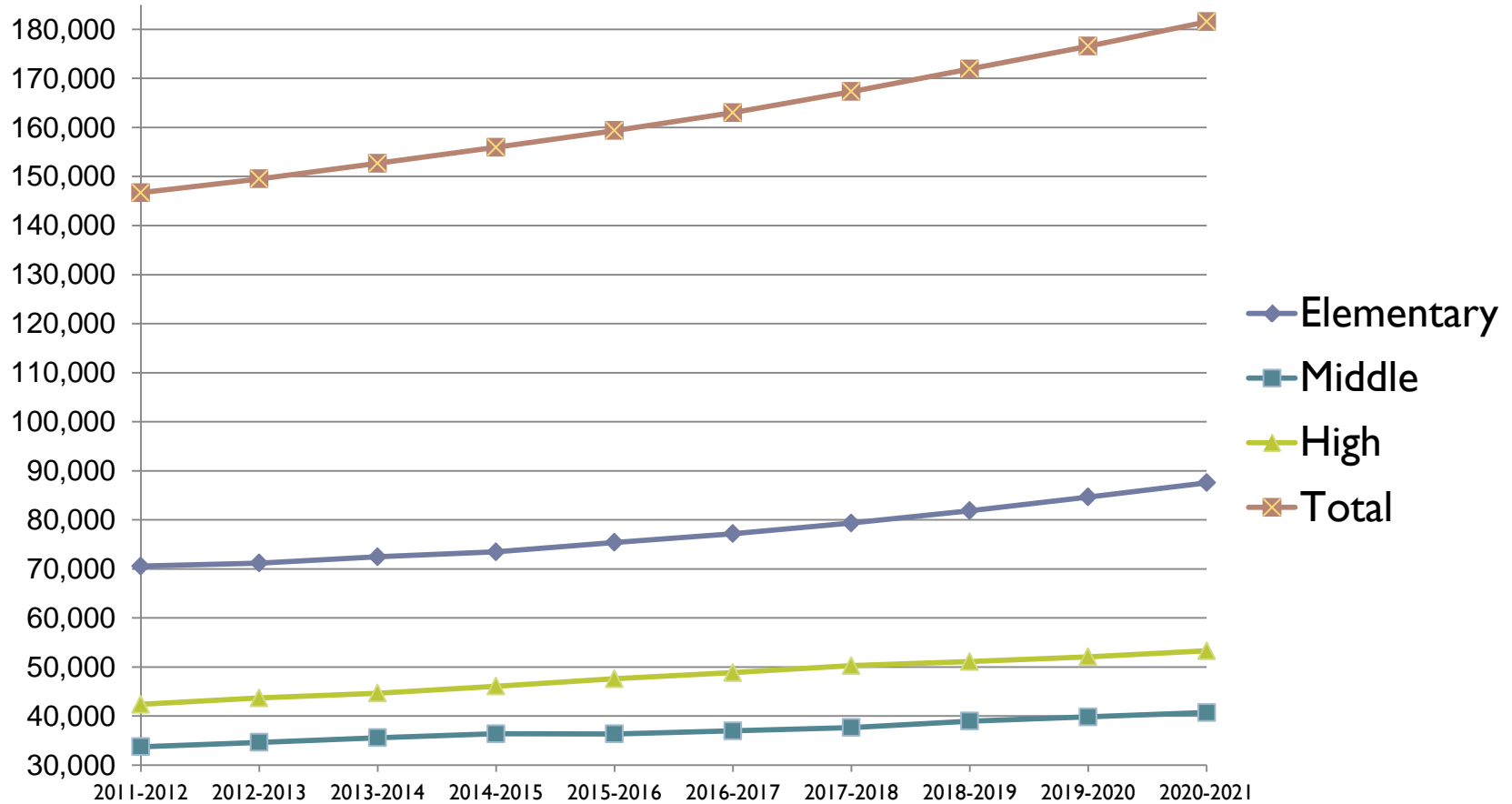
► 2013-14 Enrollment Projection

	2012-13	2013-14	Difference
Elementary	71,190	72,458	1,268
Middle	34,631	35,572	941
High	43,687	44,654	967
Total	149,508	152,684	3,176

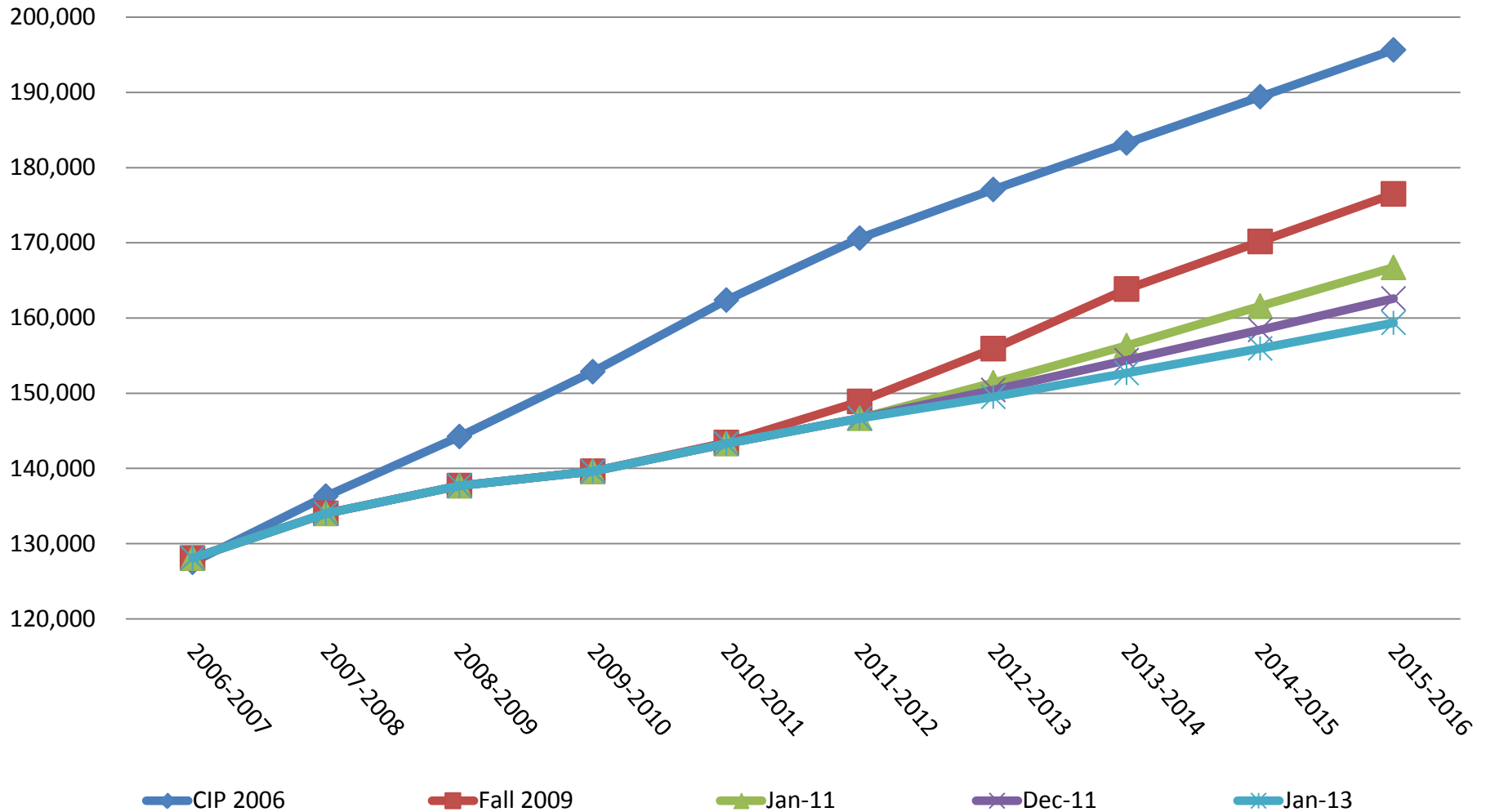
Capital (Long Term) Projection

2013-2014 WCPSS Enrollment Projections					
<u>School Year Starting</u>	<u>-1%</u>	<u>Mid-Point</u>	<u>1%</u>	<u>Number of Additional Students</u>	<u>% Growth</u>
2012 Actual		149,508		2,851	1.9%
2013	151,157	152,684	154,211	3,176 ¹	2.1%
2014	154,374	155,933	157,492	3,249	2.1%
2015	157,752	159,345	160,938	3,412	2.2%
2016	161,380	163,010	164,640	3,665	2.3%
2017	165,624	167,297	168,970	4,287	2.6%
2018	170,196	171,915	173,634	4,618	2.8%
2019	174,807	176,573	178,339	4,658	2.7%
2020	179,707	181,522	183,337	4,949	2.8%
2021	185,225	187,096	188,967	5,574	3.1%
2022	190,621	192,546	194,471	5,450	2.9%

Membership Projection By Grade Level



Historical Enrollment Projections



Summary

- ▶ Student enrollment projections for the 2013-2014 school year reflect the slow growth experienced in the past year.
- ▶ The building program projections continue to reflect the impact of a slowly recovering economy and lower birth rates.
- ▶ Projections do reflect increased growth within the next 10 years but the growth is moderate.

Next Steps

- ▶ OREd will produce regional projections and update “Circles”
- ▶ Staff will review student enrollment based on 20th day enrollment numbers for the 2013-2014 school year.
- ▶ Continue to assess OREd geo-coded data and functionality of enrollment projection model.
- ▶ Data will be used in developing building program scenarios for next building program.
- ▶ Review projected capacity through 2020

Questions?